

W. FARR LEASE 45.8 ACRES ± WELL NO. 1

LONG. 80°46'02.9" LATITUDE 39°20'00"

LONGITUDE 80°45'00" LAT. 39°18'43.9"

BETTY B. GASKINS
116.54 ACRES ±
(SURFACE)

J. FRALEY
41 ACRES ±
(SURFACE)

J. FRALEY
2.6 ACRES ±
(SURFACE)

FENCE POST
(FOUND)

JACKSON H. & BETTY LOU
CALHOUN
95.67 ACRES ±
(SURFACE)

WILLIAM A. FARR
45.8 ACRES ±
(SURFACE)

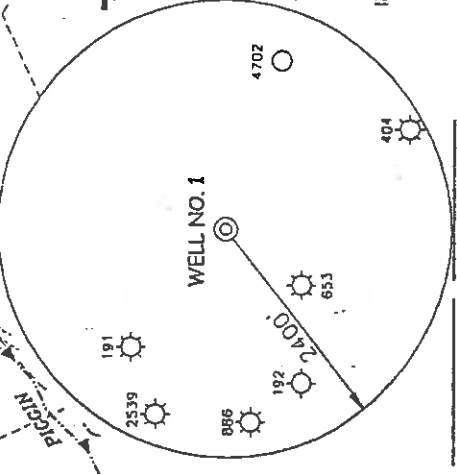
STEVE T. & SHARONA
GASPAR
182.67 ACRES ±
(SURFACE)

JENNIFER MAE
SPONAUGLER
50 ACRES ±
(SURFACE)

BRYAN ASH
14.49 ACRES ±
(SURFACE)

GREG KELLEY
1.34 ACRES ±
(SURFACE)

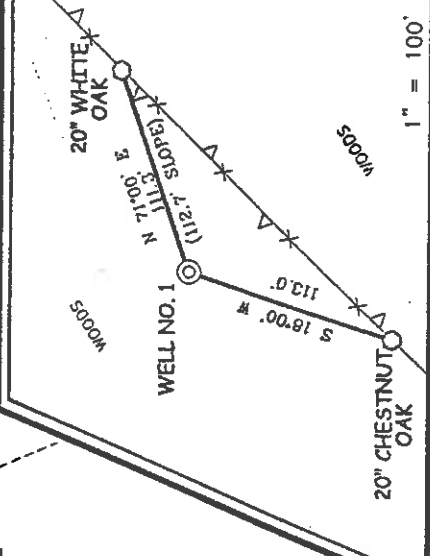
NORTH



NOTES ON SURVEY

1. TIES TO WELLS AND CORNERS ARE BASED ON STATE PLANE GRID NORTH WV NORTH ZONE NAD '27.
2. TIES TO REFERENCES ARE BASED ON MAGNETIC NORTH 10/09/02.
3. LEASE BOUNDARY SHOWN HEREON TAKEN FROM A DEED AS RECORDED IN THE COUNTY CLERK'S OFFICE OF DODDRIDGE COUNTY IN DEED BOOK 220 ON PAGE 5.
4. SURFACE OWNER AND ADJOINER INFORMATION TAKEN FROM THE ASSESSOR AND COUNTY CLERK RECORDS OF DODDRIDGE COUNTY IN AUGUST, 2002.
5. WELL LAT./LONG. ESTABLISHED BY DGPS (SUBMETER MAPPING GRADE).

REFERENCES



I THE UNDERSIGNED, HEREBY CERTIFY THAT THIS PLAN IS CORRECT TO THE BEST OF MY KNOWLEDGE AND BELIEF AND SHOWS ALL THE INFORMATION REQUIRED BY LAW AND THE REGULATIONS ISSUED AND PRESCRIBED BY THE DIVISION OF ENVIRONMENTAL PROTECTION.

P.S.
677 *Gregory A. Smith*

(+) DENOTES LOCATION OF WELL ON UNITED STATES TOPOGRAPHIC MAPS.
DATE OCTOBER 10, 20 02
OPERATORS WELL NO. FARR NO. 1
API WELL NO. 47-17-04714
STATE WV COUNTY DODDRIDGE PERMIT 04714

MINIMUM DEGREE OF ACCURACY 1 / 200 FILE NO. 5118P2 (135-2)
PROVEN SOURCE SCALE 1" = 800'
OF ELEVATION TOP OF KNOB ELEVATION = 1,284'

STATE OF WEST VIRGINIA
DIVISION OF ENVIRONMENTAL PROTECTION
OFFICE OF OIL AND GAS

WELL TYPE : OIL GAS INJECTION WASTE LIQUID IF DISPOSAL "GAS" PRODUCTION STORAGE DEEP SHALLOW

LOCATION : ELEVATION 1,115' WATERSHED PIGGIN RUN
DISTRICT WEST UNION COUNTY DODDRIDGE

SURFACE OWNER WILLIAM A. FARR QUADRANGLE WEST UNION 7.5'
ROYALTY OWNER WILLIAM A. FARR ET AL ACREAGE 45.8 ±
PROPOSED WORK : LEASE NO. 45.8 ±
DRILL CONVERT DRILL DEEPER REDRILL FRACTURE OR STIMULATE PLUG OFF OLD FORMATION PERFORATE NEW FORMATION PLUG AND ABANDON CLEAN OUT AND REPLUG OTHER
PHYSICAL CHANGE IN WELL (SPECIFY) ALEXANDER TARGET FORMATION ALEXANDER
5,600' ESTIMATED DEPTH 5,600'

WELL OPERATOR KEY OIL COMPANY DESIGNATED AGENT JAN CHAPMAN
ADDRESS 22 CARTON PLAZA WESTON, WV 26452 ADDRESS 22 CARTON PLAZA WESTON, WV 26452

County Name Dodd Permit 4714

(Smithson Flint Secalia Field) NOV 15 2002

State of West Virginia
Division of Environmental Protection
Section of Oil and Gas

WV

Well Operator's Report of Well Work

Farm Name: WILLIAM A. FARR

Operator Well No. : W. FARR #1

LOCATION: Elevation: 1115.00

Quadrangle: WEST UNION

District: WEST UNION

County: DODDRIDGE

Latitude: 7,660 Feet South of 39 Deg. 20 Min. 00 Sec.

Longitude: 4,980 Feet West of 80 Deg. 45 Min. 00 Sec.

Company: KEY OIL COMPANY
22 GARTON PLAZA
WESTON, WV 26452-0000

Agent: JAN E. CHAPMAN

Inspector: MIKE UNDERWOOD
Permit Issued: 11/13/02
Well Work Commenced: 12/13/02
Well Work Completed: 12/16/02

Verbal Plugging
Permission granted on: _____ Rig
Rotary X Cable _____
Total Depth (feet) 5497'
Fresh water depths (ft) 130'
Salt water depths (ft) NONE

Is coal being mined in area (Y / N)? N
Coal Depths (ft): NONE

OPEN FLOW DATA

Warren
Speechley
Rileys
Benson

Producing formation Alexander
Gas: Initial open flow 106 MCF / d Pay zone depth (ft)
Final open flow 1,492 MCF / d Oil: Initial open flow 0 Bbl / d
Time of open flow between initial and final tests _____ show _____ Bbl / d
Static rock pressure 1800 psig (surface pressure) after 96 Hours

Second producing formation Commingled
Gas: Initial open flow _____ MCF / d Pay zone depth (ft)
Final open flow _____ MCF / d Oil: Initial open flow _____ Bbl / d
Time of open flow between initial and final tests _____ show _____ Bbl / d
Static rock pressure _____ psig (surface pressure) after _____ Hours

NOTE: ON BACK OF THIS FORM PUT THE FOLLOWING: 1). DETAILS OF PERFORMED INTERVALS, FRACTURING OR STIMULATING, PHYSICAL CHANGE, ETC. 2). THE WELL LOG WHICH IS A SYSTEMATIC DETAILED GEOLOGICAL RECORD OF ALL FORMATIONS, INCLUDING COAL ENCOUNTERED BY THE WELLBORE.

For: KEY OIL COMPANY

By: [Signature]
Date: February 8, 2003

PRESIDENT

RECEIVED
Office of Oil & Gas
Permitting
FEB 27 2003
WV Department of
Environmental Protection

3408' - 3463'
3476' - 3570'
4584' - 5038'
5058' - 5064'
5307' - 5398'

Dodd 4714

