

RYMER LEASE 34.78 ACRES ± WELL NO. 1

IKE MORRIS
P/O 6603.75 AC±
(SURFACE)

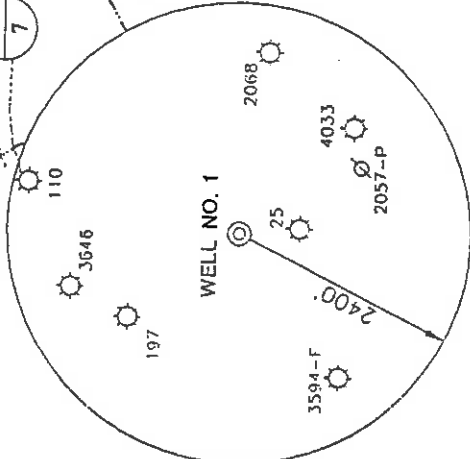
MICHAEL ZORN ET UX
47 AC±
(SURFACE)

HARRY ZORN ET UX
34.78 AC±
(SURFACE)

BARRY MATHENY
16.8 AC±
(SURFACE)

LAMB NUTTER
41 AC±
(SURFACE)

BARRY MATHENY
P/O 76 AC±
(SURFACE)

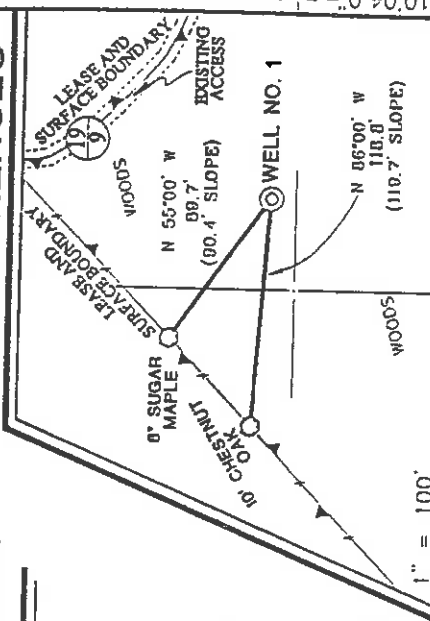


WELL NO. 1
STATE PLANE
COORDINATES
(N) 246,888
(E) 1,630,937

NOTES ON SURVEY

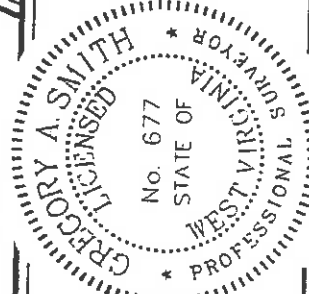
1. TIES TO WELLS AND CORNERS ARE BASED ON STATE PLANE GRID NORTH WV NORTH ZONE MAD 27.
2. TIES TO REFERENCES ARE BASED ON MAGNETIC NORTH 10-29-01.
3. LEASE BOUNDARY SHOWN HEREON TAKEN FROM A TITLE OPINION PREPARED BY GARY MORRIS, LAWYER.
4. SURFACE OWNER AND ADJOINER INFORMATION TAKEN FROM THE ASSESSOR AND COUNTY CLERK RECORDS OF DODDRIDGE COUNTY IN OCTOBER, 2001.
5. WELL LAT./LONG. ESTABLISHED BY DGS (SUBMETER MAPPING GRADE).
6. CO. RT. 19/9 DOES NOT APPEAR ON CURRENT ROAD MAPS, HOWEVER 1937 ROAD MAPS SHOW SAID ROAD AS RUNNING 1.7 MILES EXTENDING FROM CO. RT. 19/7 TO 23/3.

REFERENCES



I, THE UNDERSIGNED, HEREBY CERTIFY THAT THIS PLAT IS CORRECT TO THE BEST OF MY KNOWLEDGE AND BELIEF AND SHOWS ALL THE INFORMATION REQUIRED BY LAW AND THE REGULATIONS ISSUED AND PRESCRIBED BY THE DIVISION OF ENVIRONMENTAL PROTECTION.

P.S. *Gregory A. Smith*
677



MINIMUM DEGREE OF ACCURACY 1 / 200 FILE NO. 4901P(114-22)
PROVEN SOURCE OF ELEVATION JUNCTION OF ROADS ELEVATION 8-10' SCALE 1" = 400'

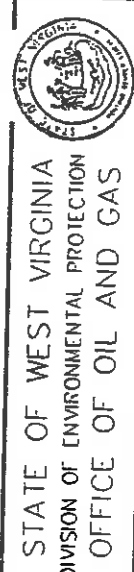
WELL TYPE : OIL GAS INJECTION WASTE DISPOSAL "GAS" PRODUCTION STORAGE DEEP SHALLOW
ELEVATION 1215' WATERSHED CAMP RUN OF MIDDLE FORK

DISTRICT SOUTHWEST COUNTY DODDRIDGE QUADRANGLE OXFORD 7.5'
SURFACE OWNER HARRY L. ZORN, ET UX ACREAGE 34.78±
ROYALTY OWNER HARRY L. ZORN, ET UX LEASE ACREAGE 34.78±
PROPOSED WORK : LEASE NO.

DRILL CONVERT DRILL DEEPER FRACTURE OR STIMULATE PLUG OFF OLD FORMATION
PERFORATE NEW FORMATION PLUG AND ABANDON CLEAN OUT AND REPLUG OTHER
PHYSICAL CHANGE IN WELL (SPECIFY) TARGET FORMATION ALEXANDER ESTIMATED DEPTH 5600'

WELL OPERATOR KEY OIL COMPANY DESIGNATED AGENT JAN CHAPMAN PERMIT 4711
ADDRESS 22 GARTON PLAZA WESTON, WV 26452 ADDRESS 22 GARTON PLAZA WESTON, WV 26452

6-6 Straight Fork - B Weststone Creek (133)



(+) DENOTES LOCATION OF WELL ON UNITED STATES TOPOGRAPHIC MAPS.
DATE NOVEMBER 12, 2001
OPERATOR'S WELL NO. 1
API WELL NO. 47-17 COUNTY PERMIT 04711

0000 4711

State of West Virginia
Division of Environmental Protection
Section of Oil and Gas

APB

Well Operator's Report of Well Work

Farm Name: HARRY L. ZORN, ET. AL.

Operator Well No. : RYMER #1

LOCATION: Elevation: 1215.00

Quadrangle: OXFORD

District: SOUTHWEST
Latitude: 14,780 Feet South of 39 Deg. 12 Min. 30 Sec.
Longitude: 2,890 Feet West of 80 Deg. 47 Min. 30 Sec.

County: DODDRIDGE

Company: KEY OIL COMPANY
22 GARTON PLAZA
WESTON, WV 26452-0000

Agent: JAN E. CHAPMAN

Inspector: MIKE UNDERWOOD
Permit Issued: 12/16/02
Well Work Commenced: 01/08/03
Well Work Completed: 01/20/03

Verbal Plugging
Permission granted on: _____
Rotary X Cable _____ Rig
Total Depth (feet) 5341'
Fresh water depths (ft) 260'
Salt water depths (ft) NONE

Is coal being mined in area (Y / N) ? N
Coal Depths (ft) : NONE

OPEN FLOW DATA

- Warren
- Speechley
- Balltown
- Rileys
- Benson
- Elk

Producing formation Alexander
Gas: Initial open flow 103 MCF / d Pay zone depth (ft)
Final open flow 1,434 MCF / d Oil: Initial open flow 0 Bbl / d
Time of open flow between initial and final tests N/A Oil: Final open flow show Bbl / d
Static rock pressure 1650 psig (surface pressure) after 96 Hours

Second producing formation Commingle
Gas: Initial open flow MCF / d Pay zone depth (ft)
Final open flow MCF / d Oil: Initial open flow Bbl / d
Time of open flow between initial and final tests Oil: Final open flow Bbl / d
Static rock pressure psig (surface pressure) after Hours

NOTE: ON BACK OF THIS FORM PUT THE FOLLOWING: 1). DETAILS OF PERFORATED INTERVALS, FRACTURING OR STIMULATING, PHYSICAL CHANGE, ETC. 2). THE WELL LOG WHICH IS A SYSTEMATIC DETAILED GEOLOGICAL RECORD OF ALL FORMATIONS, INCLUDING COAL ENCOUNTERED BY THE WELLBORE.

For: KEY OIL COMPANY

By: *Jan E. Chapman*
Date: February 5, 2003

PRESIDENT

MAR 28 2003

Dodd 4711

Casing & Tubing Size	Used in Drilling	Left In Well	Cement Fill Up Cu. Ft.
8 5/8"	1338'	1338'	275 sks To Surface
4 1/2"	5301'	5301'	450 sks

Rymer #1 (47-017 - 4711)
Four Stage Foam Frac - BJ Services

1 st Stage:	Alexander (11 holes) (5051' to 5187.50') Elk (4 holes) (4976' to 5051.25')	60 Quality Foam. 500 gal. 15% HCL. 60,000# 20/40 sand, 550,000 SCF N2, 814 bbls foam.
2 nd Stage:	Benson (8 holes) (4851.25' to 4853') Third Riley (7 holes) (4723.50' to 4775')	60 Quality Foam. 750 gal 15% HCL. 30,000# 20/40 sand, 370,000 SCF N2, 524 bbls foam.
3 rd Stage:	Riley (11 holes) (4438' to 4453') Balltown (3 holes) (4013' to 4013.50')	60 Quality Foam 1,000 gal 15% HCL. 5,000# 80/100 sand, 30,000# 20/40 sand, 426,000 SCF N2, 603 bbls foam.
4 th Stage:	Speechley (9 holes) (3309.50' to 3384') Warren (6 holes) (3265.75' to 3276.75')	60 Quality Foam. 750 gal 15% HCL. 5,000# 80/100 sand, 35,000# 20/40 sand, 464,000 SCF N2, 593 bbls foam.

WELL LOG

KB-GI	0	10	
Clay	10	12	
Sand & Shale	12	120	
Red Rock & Shale	120	139	
Sand & Shale	139	314	½" water @ 260'
Red Rock	314	325	
Sand & Shale	325	750	
Red Rock	750	800	
Sand & Shale	800	1064	
Sand	1064	1169	
Sand & Shale	1169	1796	
Shale	1796	1834	
Little Lime	1834	1880	
Big Lime	1880	1950	
Big Injun	1950	2034	
Sand & Shale	2034	2180	
Weir	2180	2301	
Shale	2301	2380	
Berea	2380	2384	
Shale	2384	2600	
Gordon	2600	2616	
Shale	2616	3254	
Warren	3254	3294	
Shale	3294	3304	
Speechley	3304	3390	
Siltstone & Shale	3390	3588	
Balltown	3588	4334	
Shale	4334	4403	
Riley	4403	4468	
Shale	4468	4702	
Third Riley	4702	4792	
Shale	4792	4844	
Benson	4844	4856	
Shale	4856	4978	
Elk	4978	5058	
Shale	5058	5087	
Alexander	5087	5193	
Sand & Shale	5193	5341	
T.D.	5341		

Gas Checks

- 1790' - No Show
- 2108' - Oil Odor
- 2577' - Odor
- 3208' - Odor
- 3969' - 6/10^{ths} - 2" w/water
- 4404' - 6/10^{ths} - 2" w/water
- 4801' - Odor
- 5093' - Odor
- 5341' - Odor