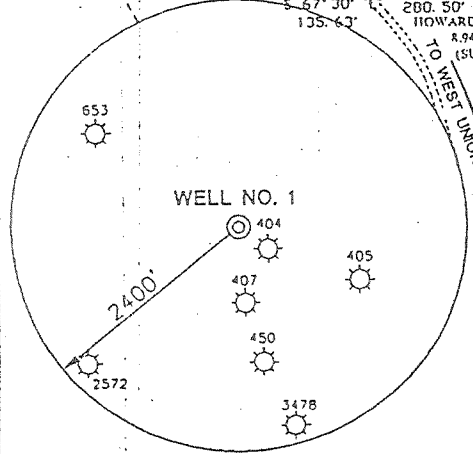
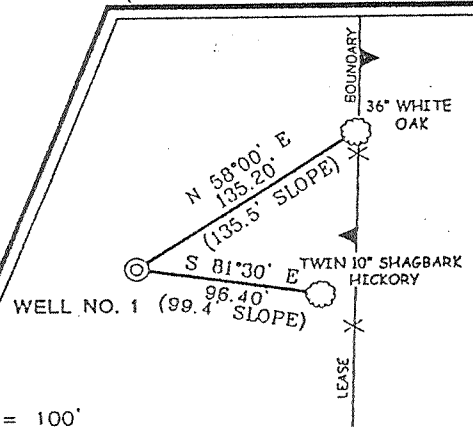


NOTES ON SURVEY

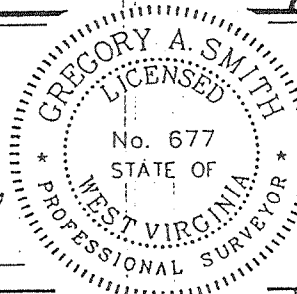
1. TIES TO WELLS AND CORNERS ARE BASED ON STATE PLANE GRID NORTH WV NORTH ZONE NAD '27.
2. TIES TO REFERENCES ARE BASED ON MAGNETIC NORTH 8/9/02.
3. LEASE BOUNDARY SHOWN HEREON TAKEN FROM A DEED AS RECORDED IN THE COUNTY CLERKS OFFICE OF DODDRIDGE COUNTY IN DEED BOOK 220 ON PAGE 5.
4. SURFACE OWNER AND ADJOINER INFORMATION TAKEN FROM THE ASSESSOR AND COUNTY CLERK RECORDS OF DODDRIDGE COUNTY IN AUGUST, 2002.
5. WELL LAT./LONG. ESTABLISHED BY DGPS(SUBMETER MAPPING GRADE).

REFERENCES



I THE UNDERSIGNED, HEREBY CERTIFY THAT THIS PLAT IS CORRECT TO THE BEST OF MY KNOWLEDGE AND BELIEF AND SHOWS ALL THE INFORMATION REQUIRED BY LAW AND THE REGULATIONS ISSUED AND PRESCRIBED BY THE DIVISION OF ENVIRONMENTAL PROTECTION.

P.S. 677 *Gregory A. Smith*



(+) DENOTES LOCATION OF WELL ON UNITED STATES TOPOGRAPHIC MAPS.
 DATE AUGUST 15, 20 02
 OPERATORS WELL NO. SMITH-SUMMERS NO.1
 API WELL NO. 47-017-04703
 STATE COUNTY PERMIT

MINIMUM DEGREE OF ACCURACY 1 / 200 FILE NO. 5098P1(126-23)
 PROVEN SOURCE OF ELEVATION BENCH MARK ELEV. 833' SCALE 1" = 800'

STATE OF WEST VIRGINIA
 DIVISION OF ENVIRONMENTAL PROTECTION
 OFFICE OF OIL AND GAS

WELL TYPE : OIL GAS LIQUID INJECTION WASTE DISPOSAL "GAS" PRODUCTION STORAGE DEEP SHALLOW

LOCATION : ELEVATION 1217' WATERSHED TRIBUTARY OF MIDDLE ISLAND CREEK
 DISTRICT WEST UNION COUNTY DODDRIDGE QUADRANGLE WEST UNION 7.5'

SURFACE OWNER STEVE AND SHARON GASPAR ACREAGE 182.67±
 ROYALTY OWNER STEVE AND SHARON GASPAR ET AL LEASE ACREAGE 182.67±

PROPOSED WORK : LEASE NO. _____
 DRILL CONVERT DRILL DEEPER REDRILL FRACTURE OR STIMULATE PLUG OFF OLD FORMATION PERFORATE NEW FORMATION PLUG AND ABANDON CLEAN OUT AND REPLUG OTHER _____
 PHYSICAL CHANGE IN WELL (SPECIFY) _____ TARGET FORMATION ALEXANDER
 ESTIMATED DEPTH 5600'

WELL OPERATOR KEY OIL COMPANY DESIGNATED AGENT JAN CHAPMAN
 ADDRESS 22 GARTON PLAZA WESTON, WV 26452 ADDRESS 22 GARTON PLAZA WESTON, WV 26452

COUNTY NAME DODDRIDGE
 PERMIT 4703

State of West Virginia
Division of Environmental Protection
Section of Oil and Gas

Well Operator's Report of Well Work

Farm Name: STEVE & SHARON GASPAR.

Operator Well No. : SMITH / SUMMERS #1

LOCATION: Elevation: 1217.00

Quadrangle: WEST UNION

District: WEST UNION

County: DODDRIDGE

Latitude: 9,450 Feet South of 39 Deg. 20 Min. 00 Sec.

Longitude: 4,030 Feet West of 80 Deg. 45 Min. 00 Sec.

Company: KEY OIL COMPANY
22 GARTON PLAZA
WESTON, WV 26452-0000

Agent: JAN E. CHAPMAN

Inspector: MIKE UNDERWOOD
Permit Issued: 10/07/02
Well Work Commenced: 10/08/02
Well Work Completed: 10/14/02

Verbal Plugging
Permission granted on: _____
Rotary X Cable _____ Rig
Total Depth (feet) 5651'
Fresh water depths (ft) 259'
Salt water depths (ft) NONE

Is coal being mined in area (Y / N)? N
Coal Depths (ft): NONE

Casing & Tubing Size	Used in Drilling	Left In Well	Cement Fill Up Cu. Ft.
8 5/8"	1230'	1230'	275 sks To Surface
4 1/2"	5554'	5554'	460 sks

Office of Oil & Gas Permitting
DEC 04 2002
WV Department of Environmental Protection

OPEN FLOW DATA

Warren 3478' - 3538'
 Speechley 3550' - 3636'
 Rileys 4650' - 5088'
 Benson 5126' - 5136'
 Producing formation Alexander Pay zone depth (ft) 5368' - 5466'
 Gas: Initial open flow Odor MCF / d Oil: Initial open flow 0 Bbl / d
 Final open flow 1,517 MCF / d Oil: Final open flow show Bbl / d
 Time of open flow between initial and final tests N/A Hours
 Static rock pressure 1800 psig (surface pressure) after 96 Hours

Second producing formation Commingled Pay zone depth (ft) _____
 Gas: Initial open flow _____ MCF / d Oil: Initial open flow _____ Bbl / d
 Final open flow _____ MCF / d Oil: Final open flow _____ Bbl / d
 Time of open flow between initial and final tests _____ Hours
 Static rock pressure _____ psig (surface pressure) after _____ Hours

NOTE: ON BACK OF THIS FORM PUT THE FOLLOWING: 1). DETAILS OF PERFORATED INTERVALS, FRACTURING OR STIMULATING, PHYSICAL CHANGE, ETC. 2). THE WELL LOG WHICH IS A SYSTEMATIC DETAILED GEOLOGICAL RECORD OF ALL FORMATIONS, INCLUDING COAL ENCOUNTERED BY THE WELLBORE.

For: KEY OIL COMPANY

By: Jan Chapman
Date: November 25, 2002

JAN 17 2003
PRESIDENT

Dodd 4703

Smith / Summers #1 (47-017 - 4703)

Four Stage Foam Frac – BJ Services

1 st Stage:	Alexander (15 holes) (5391.50' to 5457.75')	60 Quality Foam. 500 gal. 15% HCL. 60,000# 20/40 sand, 550,000 SCF N2, 819 bbls foam.
2 nd Stage:	Benson (8 holes) (5130' to 5131.75') Third Riley (5 holes) (5047.75' to 5048.75')	60 Quality Foam. 750 gal 15% HCL. 30,000# 20/40 sand, 370,000 SCF N2, 529 bbls foam.
3 rd Stage:	Riley (13 holes) (4675.75' to 4708.25')	60 Quality Foam 750 gal 15% HCL. 5,000# 80/100 sand, 30,000# 20/40 sand, 426,000 SCF N2, 607 bbls foam.
4 th Stage:	Speechley (6 holes) (3587' to 3631.75') Warren (8 holes) (3487' to 3526.25')	60 Quality Foam. 750 gal 15% HCL. 5,000# 80/100 sand, 35,000# 20/40 sand, 464,000 SCF N2, 638 bbls foam.

WELL LOG

KB-GL	0	10	
Fill	10	12	
Shale & Red Rock	12	51	
Sand & Shale	51	70	
Shale & Red Rock	70	78	
Sand & Shale	78	200	
Red Rock	200	239	
Sand & Shale	239	251	
Sand	251	280	
Sand & Shale	280	401	½" water @ 259'
Red Rock	401	410	
Sand & Shale	410	451	
Red Rock	451	463	
Sand & Shale	463	527	
Red Rock	527	546	
Sand & Shale	546	1820	
Sand	1820	1889	
Sand & Shale	1889	2055	
Little Lime	2055	2065	
Big Lime	2065	2140	
Keener	2140	2159	
Shale	2159	2190	
Big Injun	2190	2233	
Sand & Shale	2233	2408	
Weir	2408	2502	
Shale	2502	2611	
Berea	2611	2626	
Shale	2626	2814	
Gordon	2814	2864	
Shale	2864	3478	
Warren	3478	3538	Gas Checks
Shale	3538	3550	2007' - No Show
Speechley	3550	3636	2291 - Odor
Siltstone & Shale	3636	4650	2828' - Odor
Riley	4650	4730	3456' - Odor
Shale	4730	4950	4210' - Odor
Third Riley	4950	5088	4649' - Odor
Shale	5088	5126	5117' - Odor
Benson	5126	5136	5370' - Odor
Shale	5136	5368	TD - Odor
Alexander	5368	5466	
Sand & Shale	5466	5651	
T.D.	5651		