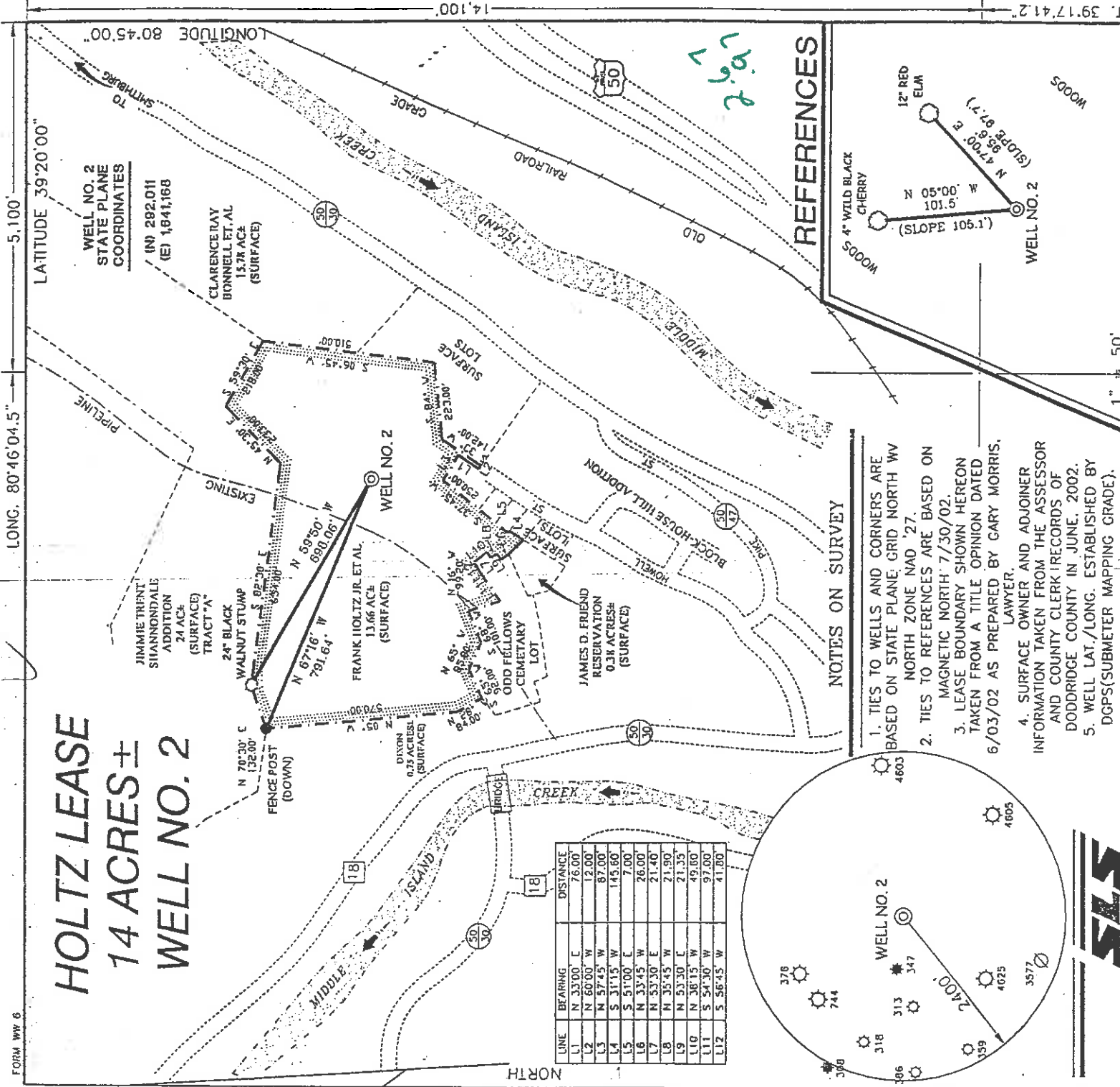


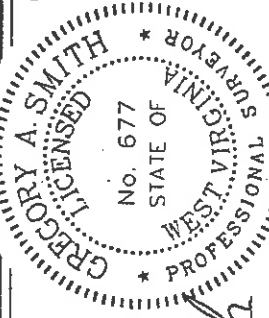
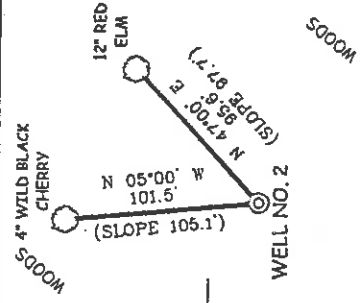
HOLTZ LEASE 14 ACRES ± WELL NO. 2



NOTES ON SURVEY

- TIES TO WELLS AND CORNERS ARE BASED ON STATE PLANE; GRID NORTH 'W' NORTH ZONE NAD '27. MAGNETIC NORTH' 7/30/02.
- TIES TO REFERENCES ARE BASED ON TAKE FROM A TITLE OPINION DATED 6/03/02 AS PREPARED BY GARY MORRIS, LAWYER.
- SURFACE OWNER AND ADJOINER INFORMATION TAKEN FROM THE ASSESSOR AND COUNTY CLERK RECORDS OF DODDRIDGE COUNTY IN JUNE, 2002.
- WELL LAT./LONG. ESTABLISHED BY DGPS(SUBMETER MAPPING GRADE).

REFERENCES



I THE UNDERSIGNED, HEREBY CERTIFY THAT THIS PLAT IS CORRECT TO THE BEST OF MY KNOWLEDGE AND BELIEF AND SHOWS ALL THE INFORMATION REQUIRED BY LAW AND THE REGULATIONS ISSUED AND PRESCRIBED BY THE DEPARTMENT OF ENVIRONMENTAL PROTECTION.

P.S. *Gregory A. Smith*
677

(+) DENOTES LOCATION OF WELL ON UNITED STATES TOPOGRAPHIC MAPS.

DATE JULY 31 OPERATORS WELL NO. HOLTZ NO. 2
API WELL NO. 47-17 STATE 47 COUNTY 17 PERMIT 044698

MINIMUM DEGREE OF ACCURACY 1 / 200 FILE NO. 5032P2 (126-20)
PROVEN SOURCE OF ELEVATION TOP OF KNOB ELEVATION 1,235' SCALE 1" = 400'

STATE OF WEST VIRGINIA
DIVISION OF ENVIRONMENTAL PROTECTION
OFFICE OF OIL AND GAS

WELL TYPE : OIL GAS INJECTION WASTE DISPOSAL "GAS" PRODUCTION STORAGE DEEP SHALLOW

LOCATION : ELEVATION 1,040' WATERSHED MIDDLE ISLAND CREEK IF LIQUID WASTE

DISTRICT WEST UNION COUNTY DODDRIDGE QUADRANGLE WEST UNION 7.5
SURFACE OWNER FRANK HOLTZ, JR. ET AL ACREAGE .13.66±
ROYALTY OWNER FRANK HOLTZ, JR. ET AL LEASE ACREAGE 14.0± LEASE NO. _____

PROPOSED WORK :
DRILL CONVERT DRILL DEEPER REDRILL FRACTURE OR STIMULATE PLUG OFF OLD FORMATION PERFORATE NEW FORMATION PLUG AND ABANDON CLEAN OUT AND REPLUG OTHER _____
PHYSICAL CHANGE IN WELL (SPECIFY) _____ TARGET FORMATION GORDON ESTIMATED DEPTH 2,900'

WELL OPERATOR KEY OIL COMPANY DESIGNATED AGENT JAN CHAPMAN
ADDRESS 22 GARTON PLAZA WESTON, WV 26452 ADDRESS 22 GARTON PLAZA WESTON, WV 26452

6-6 (099)

0000 4698

LONG. 80°46'04.5" LATITUDE 39°20'00"

LONGITUDE 80°45'00"

WELL NO. 2
STATE PLANE
COORDINATES
(N) 292,011
(E) 1941,168

CLARENCE RAY
BONNELL ET AL
15.78 ACRE
(SURFACE)

JIMMIE TRINT
SHANNONDALE
ADDITION
24 AC±
TRACT 'A'
(SURFACE)

FRANK HOLTZ JR. ET AL.
13.66 AC±
(SURFACE)

DIXON
0.35 ACRES±
(SURFACE)

JAMES D. FRIEND
RESERVATION
0.38 ACRES±
(SURFACE)

SURFACE
LOTS

HOVELL
BLOCK-HOUSE HILL ADDITION

ODD FELLOWS
CEMETARY
LOT

SURFACE
LOTS

HOVELL
BLOCK-HOUSE HILL ADDITION

ODD FELLOWS
CEMETARY
LOT

SURFACE
LOTS

HOVELL
BLOCK-HOUSE HILL ADDITION

ODD FELLOWS
CEMETARY
LOT

SURFACE
LOTS

HOVELL
BLOCK-HOUSE HILL ADDITION

ODD FELLOWS
CEMETARY
LOT

SURFACE
LOTS

HOVELL
BLOCK-HOUSE HILL ADDITION

ODD FELLOWS
CEMETARY
LOT

SURFACE
LOTS

HOVELL
BLOCK-HOUSE HILL ADDITION

ODD FELLOWS
CEMETARY
LOT

SURFACE
LOTS

HOVELL
BLOCK-HOUSE HILL ADDITION

ODD FELLOWS
CEMETARY
LOT

SURFACE
LOTS

HOVELL
BLOCK-HOUSE HILL ADDITION

ODD FELLOWS
CEMETARY
LOT

SURFACE
LOTS

HOVELL
BLOCK-HOUSE HILL ADDITION

ODD FELLOWS
CEMETARY
LOT

SURFACE
LOTS

HOVELL
BLOCK-HOUSE HILL ADDITION

ODD FELLOWS
CEMETARY
LOT

SURFACE
LOTS

HOVELL
BLOCK-HOUSE HILL ADDITION

ODD FELLOWS
CEMETARY
LOT

SURFACE
LOTS

HOVELL
BLOCK-HOUSE HILL ADDITION

ODD FELLOWS
CEMETARY
LOT

SURFACE
LOTS

HOVELL
BLOCK-HOUSE HILL ADDITION

ODD FELLOWS
CEMETARY
LOT

SURFACE
LOTS

HOVELL
BLOCK-HOUSE HILL ADDITION

ODD FELLOWS
CEMETARY
LOT

SURFACE
LOTS

HOVELL
BLOCK-HOUSE HILL ADDITION

ODD FELLOWS
CEMETARY
LOT

SURFACE
LOTS

HOVELL
BLOCK-HOUSE HILL ADDITION

ODD FELLOWS
CEMETARY
LOT

SURFACE
LOTS

HOVELL
BLOCK-HOUSE HILL ADDITION

ODD FELLOWS
CEMETARY
LOT

SURFACE
LOTS

HOVELL
BLOCK-HOUSE HILL ADDITION

ODD FELLOWS
CEMETARY
LOT

SURFACE
LOTS

HOVELL
BLOCK-HOUSE HILL ADDITION

ODD FELLOWS
CEMETARY
LOT

SURFACE
LOTS

HOVELL
BLOCK-HOUSE HILL ADDITION

ODD FELLOWS
CEMETARY
LOT

SURFACE
LOTS

HOVELL
BLOCK-HOUSE HILL ADDITION

ODD FELLOWS
CEMETARY
LOT

SURFACE
LOTS

HOVELL
BLOCK-HOUSE HILL ADDITION

ODD FELLOWS
CEMETARY
LOT

SURFACE
LOTS

HOVELL
BLOCK-HOUSE HILL ADDITION

ODD FELLOWS
CEMETARY
LOT

SURFACE
LOTS

HOVELL
BLOCK-HOUSE HILL ADDITION

ODD FELLOWS
CEMETARY
LOT

SURFACE
LOTS

HOVELL
BLOCK-HOUSE HILL ADDITION

ODD FELLOWS
CEMETARY
LOT

SURFACE
LOTS

HOVELL
BLOCK-HOUSE HILL ADDITION

ODD FELLOWS
CEMETARY
LOT

SURFACE
LOTS

HOVELL
BLOCK-HOUSE HILL ADDITION

ODD FELLOWS
CEMETARY
LOT

SURFACE
LOTS

HOVELL
BLOCK-HOUSE HILL ADDITION

ODD FELLOWS
CEMETARY
LOT

SURFACE
LOTS

HOVELL
BLOCK-HOUSE HILL ADDITION

ODD FELLOWS
CEMETARY
LOT

SURFACE
LOTS

HOVELL
BLOCK-HOUSE HILL ADDITION

ODD FELLOWS
CEMETARY
LOT

SURFACE
LOTS

HOVELL
BLOCK-HOUSE HILL ADDITION

ODD FELLOWS
CEMETARY
LOT

SURFACE
LOTS

HOVELL
BLOCK-HOUSE HILL ADDITION

ODD FELLOWS
CEMETARY
LOT

SURFACE
LOTS

HOVELL
BLOCK-HOUSE HILL ADDITION

ODD FELLOWS
CEMETARY
LOT

SURFACE
LOTS

HOVELL
BLOCK-HOUSE HILL ADDITION

ODD FELLOWS
CEMETARY
LOT

SURFACE
LOTS

HOVELL
BLOCK-HOUSE HILL ADDITION

ODD FELLOWS
CEMETARY
LOT

SURFACE
LOTS

HOVELL
BLOCK-HOUSE HILL ADDITION

ODD FELLOWS
CEMETARY
LOT

SURFACE
LOTS

HOVELL
BLOCK-HOUSE HILL ADDITION

ODD FELLOWS
CEMETARY
LOT

SURFACE
LOTS

HOVELL
BLOCK-HOUSE HILL ADDITION

ODD FELLOWS
CEMETARY
LOT

SURFACE
LOTS

HOVELL
BLOCK-HOUSE HILL ADDITION

ODD FELLOWS
CEMETARY
LOT

SURFACE
LOTS

HOVELL
BLOCK-HOUSE HILL ADDITION

ODD FELLOWS
CEMETARY
LOT

SURFACE
LOTS

HOVELL
BLOCK-HOUSE HILL ADDITION

ODD FELLOWS
CEMETARY
LOT

SURFACE
LOTS

HOVELL
BLOCK-HOUSE HILL ADDITION

ODD FELLOWS
CEMETARY
LOT

SURFACE
LOTS

HOVELL
BLOCK-HOUSE HILL ADDITION

ODD FELLOWS
CEMETARY
LOT

SURFACE
LOTS

HOVELL
BLOCK-HOUSE HILL ADDITION

ODD FELLOWS
CEMETARY
LOT

SURFACE
LOTS

HOVELL
BLOCK-HOUSE HILL ADDITION

ODD FELLOWS
CEMETARY
LOT

SURFACE
LOTS

HOVELL
BLOCK-HOUSE HILL ADDITION

ODD FELLOWS
CEMETARY
LOT

SURFACE
LOTS

HOVELL
BLOCK-HOUSE HILL ADDITION

ODD FELLOWS
CEMETARY
LOT

SURFACE
LOTS

HOVELL
BLOCK-HOUSE HILL ADDITION

ODD FELLOWS
CEMETARY
LOT

SURFACE
LOTS

HOVELL
BLOCK-HOUSE HILL ADDITION

ODD FELLOWS
CEMETARY
LOT

SURFACE
LOTS

HOVELL
BLOCK-HOUSE HILL ADDITION

ODD FELLOWS
CEMETARY
LOT

SURFACE
LOTS

HOVELL
BLOCK-HOUSE HILL ADDITION

ODD FELLOWS
CEMETARY
LOT

SURFACE
LOTS

HOVELL
BLOCK-HOUSE HILL ADDITION

ODD FELLOWS
CEMETARY
LOT

SURFACE
LOTS

HOVELL
BLOCK-HOUSE HILL ADDITION

ODD FELLOWS
CEMETARY
LOT

SURFACE
LOTS

HOVELL
BLOCK-HOUSE HILL ADDITION

ODD FELLOWS
CEMETARY
LOT

SURFACE
LOTS

HOVELL
BLOCK-HOUSE HILL ADDITION

ODD FELLOWS
CEMETARY
LOT

SURFACE
LOTS

HOVELL
BLOCK-HOUSE HILL ADDITION

ODD FELLOWS
CEMETARY
LOT

SURFACE
LOTS

HOVELL
BLOCK-HOUSE HILL ADDITION

ODD FELLOWS
CEMETARY
LOT

SURFACE
LOTS

HOVELL
BLOCK-HOUSE HILL ADDITION

ODD FELLOWS
CEMETARY
LOT

SURFACE
LOTS

HOVELL
BLOCK-HOUSE HILL ADDITION

ODD FELLOWS
CEMETARY
LOT

SURFACE
LOTS

HOVELL
BLOCK-HOUSE HILL ADDITION

ODD FELLOWS
CEMETARY
LOT

SURFACE
LOTS

HOVELL
BLOCK-HOUSE HILL ADDITION

ODD FELLOWS
CEMETARY
LOT

SURFACE
LOTS

HOVELL
BLOCK-HOUSE HILL ADDITION

ODD FELLOWS
CEMETARY
LOT

SURFACE
LOTS

HOVELL
BLOCK-HOUSE HILL ADDITION

ODD FELLOWS
CEMETARY
LOT

SURFACE
LOTS

HOVELL
BLOCK-HOUSE HILL ADDITION

ODD FELLOWS
CEMETARY
LOT

SURFACE
LOTS

HOVELL
BLOCK-HOUSE HILL ADDITION

ODD FELLOWS
CEMETARY
LOT

SURFACE
LOTS

HOVELL
BLOCK-HOUSE HILL ADDITION

ODD FELLOWS
CEMETARY
LOT

SURFACE
LOTS

HOVELL
BLOCK-HOUSE HILL ADDITION

ODD FELLOWS
CEMETARY
LOT

SURFACE
LOTS

HOVELL

Aut

State of West Virginia
Division of Environmental Protection
Section of Oil and Gas

Well Operator's Report of Well Work

Farm Name: FRANK HOLTZ, JR. ET. AL.

Operator Well No. : HOLTZ #2

LOCATION: Elevation: 1040.00

Quadrangle: WEST UNION

District: WEST UNION

County: DODDRIDGE

Latitude: 14,100 Feet South of 39 Deg. 20 Min. 00 Sec.

Longitude: 5,100 Feet West of 80 Deg. 45 Min. 00 Sec.

Company: KEY OIL COMPANY
22 GARTON PLAZA
WESTON, WV 26452-0000

Agent: JAN E. CHAPMAN

Inspector: MIKE UNDERWOOD
Permit Issued: 08/08/02
Well Work Commenced: 08/25/02
Well Work Completed: 08/28/02

Verbal Plugging
Permission granted on: _____ Rig
Rotary X Cable _____
Total Depth (feet) 2762'
Fresh water depths (ft) 288'
Salt water depths (ft) NONE

Is coal being mined in area (Y / N)? N
Coal Depths (ft): 25' to 28' (3')

Casing & Tubing Size	Used in Drilling	Left in Well	Cement Fill Up Cu. Ft.
8 5/8"	1061'	1061'	240 sks To Surface
4 1/2"	2692'	2692'	250 sks

Chlorine Gas Permitting
DEC 04 2002
WV Department of Environmental Protection

OPEN FLOW DATA

Keener
Big Injun
Squaw
Gordon

Producing formation _____
Gas: Initial open flow 84 MCF / d
Final open flow 1,639 MCF / d
Time of open flow between initial and final tests N/A
Static rock pressure 310 psig (surface pressure) after 96 Hours

1904' - 1923'
1924' - 1994'
1997' - 2030'
2575' - 2632'

Second producing formation Commingled
Gas: Initial open flow _____ MCF / d
Final open flow _____ MCF / d
Time of open flow between initial and final tests _____
Static rock pressure _____ psig (surface pressure) after _____ Hours

Pay zone depth (ft)
Oil: Initial open flow _____ Bbl / d
Oil: Final open flow _____ Bbl / d
Hours _____
Hours _____

NOTE: ON BACK OF THIS FORM PUT THE FOLLOWING: 1). DETAILS OF PERFORMED INTERVALS, FRACTURING OR STIMULATING, PHYSICAL CHANGE, ETC. 2). THE WELL LOG WHICH IS A SYSTEMATIC DETAILED GEOLOGICAL RECORD OF ALL FORMATIONS, INCLUDING COAL ENCOUNTERED BY THE WELLBORE.

For: KEY OIL COMPANY

By: 
Date: October 1, 2002

PRESIDENT

0000 4698

Holtz #2 (47-017 - 4698)
Two Stage Foam Frac - B.J. Services

1st Stage: Gordon (8 holes) (2597' to 2602') 60 Quality Foam. 500 gal. 15% HCL.
35,000# 20/40 sand, 425,000 SCF N2,
535 bbls foam.

2nd Stage: Squaw (6 holes) (2000' 2008') 60 Quality Foam. 1,000 gal 15% HCL.
Big Injun (18 holes) (1940' to 1980') 45,000# 20/40 sand, 585,000 SCF N2,
Keener (10 holes) (1910' to 1920') 615 bbls foam.

WELL LOG

KB-GL	0	10	
Fill	10	14	
Sand	14	20	
Sand & Shale	20	25	
Coal	25	28	
Sand & Shale	28	112	
Red Rock	112	130	
Shale & Sand	130	200	
Red Rock	200	218	
Sand & Shale	218	370	
Red Rock	370	405	
Sand & Shale	405	538	
Sand	538	570	
Sand & Shale	570	781	
Sand	781	785	
Sand & Shale & Red Rock	785	868	
Sand & Shale	868	1818	
Little Lime	1818	1850	
Big Lime	1850	1904	
Keener	1904	1923	
Shale	1923	1924	
Big Injun	1924	1994	
Shale	1994	1997	
Squaw	1997	2030	
Sand & Shale	2030	2172	
Weir	2172	2266	
Sand & Shale	2266	2381	
Berea	2381	2390	
Sand & Shale	2390	2575	
Gordon	2575	2632	
Shale	2632	2762	
TD	2762		

1/2" water @ 288'

Gas Checks

1786' - Odor
2072' - 4/10^{ths} -2" w/H₂O
2354' - 4/10^{ths} -2" w/H₂O
2543' - 4/10^{ths} -2" w/H₂O