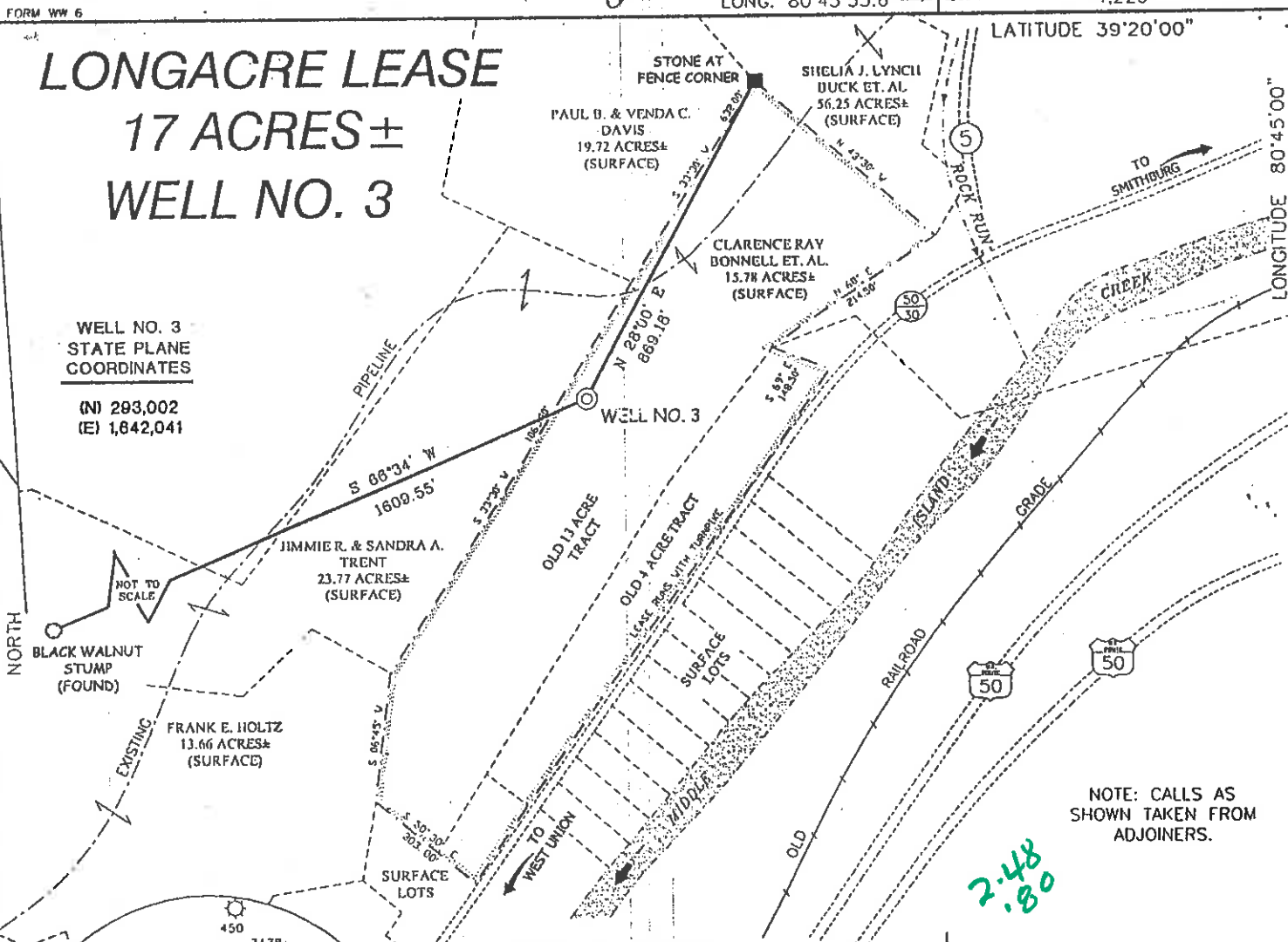


LONGACRE LEASE

17 ACRES ±

WELL NO. 3

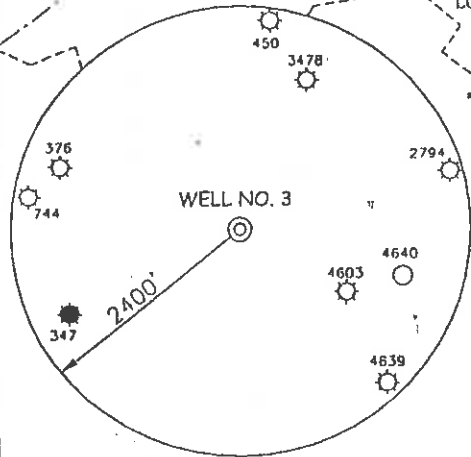
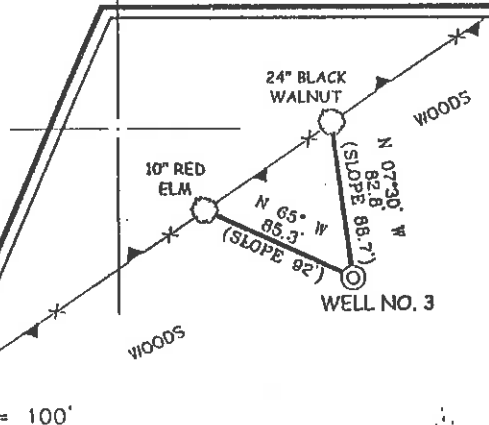
WELL NO. 3
STATE PLANE
COORDINATES
(N) 293,002
(E) 1,642,041



NOTES ON SURVEY

1. TIES TO WELLS AND CORNERS ARE BASED ON STATE PLANE GRID NORTH WV NORTH ZONE NAD '27.
2. TIES TO REFERENCES ARE BASED ON MAGNETIC NORTH 6/10/02.
3. LEASE BOUNDARY SHOWN HEREON TAKEN FROM A TITLE OPINION DATED 4/19/02 AS PREPARED BY GARY MORRIS, LAWYER.
4. SURFACE OWNER AND ADJOINER INFORMATION TAKEN FROM THE ASSESSOR AND COUNTY CLERK RECORDS OF DODDRIDGE COUNTY IN JUNE, 2002.
5. WELL LAT./LONG. ESTABLISHED BY DGPS(SUBMETER MAPPING GRADE).

REFERENCES

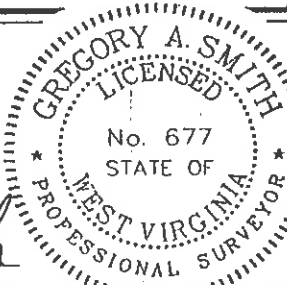


2.48
1.80



I THE UNDERSIGNED, HEREBY CERTIFY THAT THIS PLAT IS CORRECT TO THE BEST OF MY KNOWLEDGE AND BELIEF AND SHOWS ALL THE INFORMATION REQUIRED BY LAW AND THE REGULATIONS ISSUED AND PRESCRIBED BY THE DEPARTMENT OF ENVIRONMENTAL PROTECTION.

P.S. 677 *Gregory A. Smith*



(+) DENOTES LOCATION OF WELL ON UNITED STATES TOPOGRAPHIC MAPS.

DATE AUGUST 1, 2002
OPERATORS WELL NO. LONGACRE NO. 3
API WELL NO. 47-17-04697
STATE COUNTY PERMIT

MINIMUM DEGREE OF ACCURACY 1 / 200 FILE NO. 5033P3 (126-29)
PROVEN SOURCE OF ELEVATION TOP OF KNOB ELEVATION 1,235' SCALE 1" = 400'

STATE OF WEST VIRGINIA
DIVISION OF ENVIRONMENTAL PROTECTION
OFFICE OF OIL AND GAS



WELL TYPE: OIL GAS LIQUID INJECTION WASTE DISPOSAL IF "GAS" PRODUCTION STORAGE DEEP SHALLOW

LOCATION: ELEVATION 1,022' WATERSHED MIDDLE ISLAND CREEK
DISTRICT WEST UNION COUNTY DODDRIDGE QUADRANGLE WEST UNION 7.5'

SURFACE OWNER DONALD MICHAELS ACREAGE 17±
ROYALTY OWNER FRANKLIN L. BUTLER AND KEY OIL CO. LEASE ACREAGE 17±
PROPOSED WORK: LEASE NO. _____

DRILL CONVERT DRILL DEEPER REDRILL FRACTURE OR STIMULATE PLUG OFF OLD FORMATION PERFORATE NEW FORMATION PLUG AND ABANDON CLEAN OUT AND REPLUG OTHER _____

PHYSICAL CHANGE IN WELL (SPECIFY) _____ TARGET FORMATION GORDON
ESTIMATED DEPTH 2,900'

WELL OPERATOR KEY OIL COMPANY DESIGNATED AGENT JAN CHAPMAN
ADDRESS 22 GARTON PLAZA WESTON, WV 26452 ADDRESS 22 GARTON PLAZA WESTON, WV 26452

6-6 99

COUNTY NAME DODD
PERMIT 4697

State of West Virginia
Division of Environmental Protection
Section of Oil and Gas

Well Operator's Report of Well Work

Farm Name: DONALD MICHAELS

Operator Well No. : LONGACRE #3

LOCATION: Elevation: 1022'

Quadrangle: WEST UNION

District: WEST UNION

County: DODDRIDGE

Latitude: 13100 Feet South of 39 Deg. 20 Min. 00 Sec.

Longitude: 4220 Feet West of 80 Deg. 45 Min. 00 Sec.

Company: KEY OIL COMPANY
22 GARTON PLAZA
WESTON, WV 26452-0000

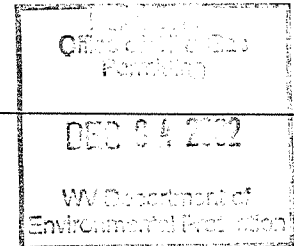
Agent: JAN E. CHAPMAN

Inspector: MIKE UNDERWOOD
Permit Issued: 08/13/02
Well Work Commenced: 08/22/02
Well Work Completed: 08/25/02

Verbal Plugging
Permission granted on: _____
Rotary X Cable _____ Rig
Total Depth (feet) 2745'
Fresh water depths (ft) 165'
Salt water depths (ft) None

Casing & Tubing Size	Used in Drilling	Left in Well	Cement Fill Up Cu. Ft.
8 5/8"	1016'	1016'	235 sks To Surface
4 1/2"	2690'	2690'	250 sks

Is coal being mined in area (Y / N)? N
Coal Depths (ft): 15'- 18' (3')



OPEN FLOW DATA

Keener 1890' - 1909'
 Injun 1926' - 1964'
 Squaw 1965' - 2002'
 Producing formation Gordon Pay zone depth (ft) 2568' - 2622'
 Gas: Initial open flow odor MCF / d Oil: Initial open flow 0 Bbl / d
 Final open flow 1,958 MCF / d Oil: Final open flow show Bbl / d
 Time of open flow between initial and final tests N/A Hours
 Static rock pressure 400 psig (surface pressure) after 96 Hours

Second producing formation Commingled Pay zone depth (ft) _____
 Gas: Initial open flow _____ MCF / d Oil: Initial open flow _____ Bbl / d
 Final open flow _____ MCF / d Oil: Final open flow _____ Bbl / d
 Time of open flow between initial and final tests _____ Hours
 Static rock pressure _____ psig (surface pressure) after _____ Hours

NOTE: ON BACK OF THIS FORM PUT THE FOLLOWING: 1). DETAILS OF PERFORATED INTERVALS, FRACTURING OR STIMULATING, PHYSICAL CHANGE, ETC. 2). THE WELL LOG WHICH IS A SYSTEMATIC DETAILED GEOLOGICAL RECORD OF ALL FORMATIONS, INCLUDING COAL ENCOUNTERED BY THE WELLBORE.

For: KEY OIL COMPANY
By: [Signature]
Date: October 1, 2002

JAN 17 2003

PRESIDENT

4
0000
4697

Longacre #3 (47-017 -4697)
Two Stage Foam Frac – B.J. Services

1 st Stage:	Gordon (12 holes) (2583' to 2616')	60 Quality Foam. 500 gal. 15% HCL. 35,000# 20/40 sand, 425,000 SCF N2, 535 bbls foam.
2 nd Stage:	Squaw (7 holes) (1920' to 2000') Big Injun (18 holes) (1931' to 1962') Keener (6 holes) (1893' to 1900')	60 Quality Foam. 1,000 gal 15% HCL. 40,000# 20/40 sand, 545,000 SCF N2, 585 bbls foam.

WELL LOG

KB-GL	0	10	
Clay	10	12	
Sand	12	15	
Coal	15	18	
Sand & Shale	18	44	
Red Rock	44	50	
Shale & Sand & Red Rock	50	169	
Sand	169	210	Damp @ 170'
Red Rock	210	240	
Sand & Shale	240	290	
Sand	290	340	
Sand & Shale & Red Rock	340	986	
Sand & Shale	986	1096	
Sand	1096	1215	
Sand & Shale	1215	1605	
Sand	1605	1796	
Sand & Shale	1796	1846	
Big Lime	1846	1890	Gas Checks
Keener	1890	1909	1756' – Oil Odor
Shale & Lime	1909	1826	2071' - Odor
Big Injun	1826	1964	2352' - Odor
Shale	1964	1965	2573' – Odor
Squaw	1965	2002	TD - Odor
Sand & Shale	2002	2161	
Weir	2161	2255	
Sand & Shale	2255	2372	
Berea	2372	2380	
Sand & Shale	2380	2568	
Gordon	2568	2622	
Shale	2622	2745	
TD	2745		