

LONGACRE LEASE

17 ACRES±

WELL NO. 2

WELL NO. 1
STATE PLANE
COORDINATES

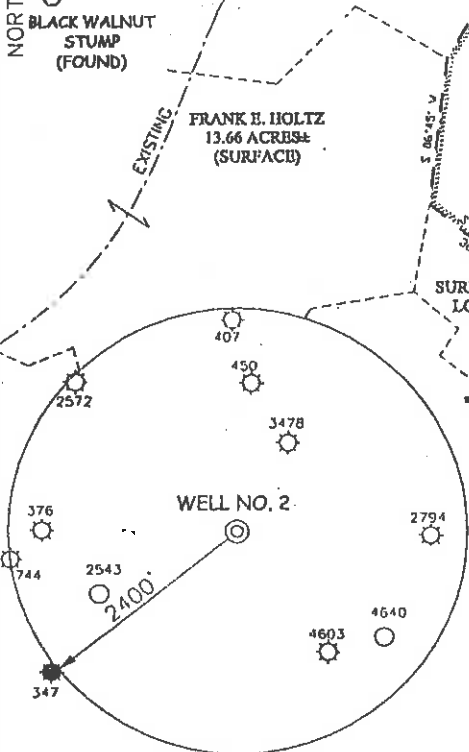
(N) 283,470'
(E) 1,842,414'

NORTH

LONGITUDE 80°45'00"

12.520'

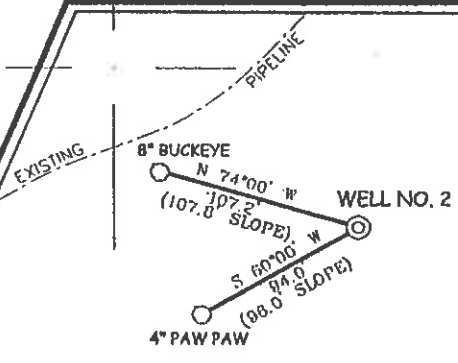
LAT. 39°17'55.8"



NOTES ON SURVEY

1. TIES TO WELLS AND CORNERS ARE BASED ON STATE PLANE GRID NORTH WV NORTH ZONE NAD '27.
2. TIES TO REFERENCES ARE BASED ON MAGNETIC NORTH 6/10/02.
3. LEASE BOUNDARY SHOWN HEREON TAKEN FROM A TITLE OPINION DATED 4/19/02 AS PREPARED BY GARY MORRIS, LAWYER.
4. SURFACE OWNER AND ADJOINER INFORMATION TAKEN FROM THE ASSESSOR AND COUNTY CLERK RECORDS OF DODDRIDGE COUNTY IN JUNE, 2002.
5. WELL LAT./LONG. ESTABLISHED BY DGPS(SUBMETER MAPPING GRADE).

REFERENCES



1" = 50'

I THE UNDERSIGNED, HEREBY CERTIFY THAT THIS PLAT IS CORRECT TO THE BEST OF MY KNOWLEDGE AND BELIEF AND SHOWS ALL THE INFORMATION REQUIRED BY LAW AND THE REGULATIONS ISSUED AND PRESCRIBED BY THE DIVISION OF ENVIRONMENTAL PROTECTION.

P.S. 677 *Gregory A. Smith*



(+) DENOTES LOCATION OF WELL ON UNITED STATES TOPOGRAPHIC MAPS.
 DATE JUNE 28, 20 02
 OPERATORS WELL NO. LONGACRE NO. 2
 API WELL NO. 47-17-04694
 STATE COUNTY PERMIT

MINIMUM DEGREE OF ACCURACY 1 / 200 FILE NO. 5033P2(126-02)
 PROVEN SOURCE OF ELEVATION TOP OF KNOB ELEVATION 1,235' SCALE 1" = 400'

STATE OF WEST VIRGINIA
 DIVISION OF ENVIRONMENTAL PROTECTION
 OFFICE OF OIL AND GAS

WELL TYPE : OIL GAS LIQUID INJECTION WASTE DISPOSAL IF "GAS" PRODUCTION STORAGE DEEP SHALLOW

LOCATION :
 ELEVATION 972' WATERSHED MIDDLE ISLAND CREEK
 DISTRICT WEST UNION COUNTY DODDRIDGE QUADRANGLE WEST UNION 7.5'

SURFACE OWNER DONALD MICHAELS ACREAGE 17±
 ROYALTY OWNER FRANKLIN L. BUTLER AND KEY OIL CO. LEASE ACREAGE 17±

PROPOSED WORK :
 DRILL CONVERT DRILL DEEPER REDRILL FRACTURE OR STIMULATE PLUG OFF OLD FORMATION PERFORATE NEW FORMATION PLUG AND ABANDON CLEAN OUT AND REPLUG OTHER

PHYSICAL CHANGE IN WELL (SPECIFY) _____ TARGET FORMATION ALEXANDER
 ESTIMATED DEPTH 5,600'

WELL OPERATOR KEY OIL COMPANY DESIGNATED AGENT JAN CHAPMAN
 ADDRESS 22 GARTON PLAZA WESTON, WV 26452 ADDRESS 22 GARTON PLAZA WESTON, WV 26452

2.37
74

6-6 99

COUNTY NAME PERMIT 4694

State of West Virginia
Division of Environmental Protection
Section of Oil and Gas

Handwritten initials

Well Operator's Report of Well Work

Farm Name: DONALD MICHAELS

Operator Well No. : LONGACRE #2

LOCATION: Elevation: 972.00

Quadrangle: WEST UNION

District: WEST UNION

County: DODDRIDGE

Latitude: 12,520 Feet South of 39 Deg. 20 Min. 00 Sec.

Longitude: 3,900 Feet West of 80 Deg. 45 Min. 00 Sec.

Company: KEY OIL COMPANY
22 GARTON PLAZA
WESTON, WV 26452-0000

Agent: JAN E. CHAPMAN

Inspector: MIKE UNDERWOOD

Permit Issued: 07/22/02

Well Work Commenced: 08/12/02

Well Work Completed: 08/16/02

Verbal Plugging

Permission granted on: _____

Rotary X Cable _____ Rig

Total Depth (feet) 5336'

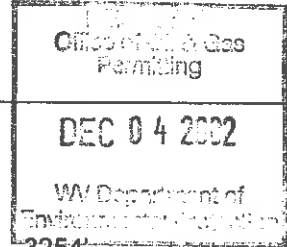
Fresh water depths (ft) 200'

Salt water depths (ft) NONE

Is coal being mined in area (Y / N)? N

Coal Depths (ft): NONE

Casing & Tubing Size	Used in Drilling	Left In Well	Cement Fill Up Cu. Ft.
8 5/8"	974'	974'	220 sks To Surface
4 1/2"	5291'	5291'	480 sks



OPEN FLOW DATA

Warren 3195' - 3254'
 Speechley 3274' - 3364'
 Riley 4376' - 4463'
 Benson 4850' - 4862'
 Producing formation Alexander Pay zone depth (ft) 5103' - 5204'
 Gas: Initial open flow Odor MCF / d Oil: Initial open flow 0 Bbl / d
 Final open flow 1,905 MCF / d Oil: Final open flow show Bbl / d
 Time of open flow between initial and final tests N/A Hours
 Static rock pressure 1820 psig (surface pressure) after 96 Hours

Second producing formation Commingled Pay zone depth (ft) _____
 Gas: Initial open flow _____ MCF / d Oil: Initial open flow _____ Bbl / d
 Final open flow _____ MCF / d Oil: Final open flow _____ Bbl / d
 Time of open flow between initial and final tests _____ Hours
 Static rock pressure _____ psig (surface pressure) after _____ Hours

NOTE: ON BACK OF THIS FORM PUT THE FOLLOWING: 1). DETAILS OF PERFORATED INTERVALS, FRACTURING OR STIMULATING, PHYSICAL CHANGE, ETC. 2). THE WELL LOG WHICH IS A SYSTEMATIC DETAILED GEOLOGICAL RECORD OF ALL FORMATIONS, INCLUDING COAL ENCOUNTERED BY THE WELLBORE.

For: KEY OIL COMPANY

By: *[Signature]*

Date: September 3, 2002

PRESIDENT

D000 4694

Longacre #2 (47-017 - 4694)
Four Stage Foam Frac – BJ Services

1 st Stage:	Alexander (13 holes) (5134.50' to 5199')	60 Quality Foam. 500 gal. 15% HCL. 60,000# 20/40 sand, 550,000 SCF N2, 815 bbls foam.
2 nd Stage:	Benson (13 holes) (4865.50' to 4868.25')	60 Quality Foam. 750 gal 15% HCL. 35,000# 20/40 sand, 390,000 SCF N2, 572 bbls foam.
3 rd Stage:	Riley (13 holes) (4424.50' to 4436')	60 Quality Foam 750 gal 15% HCL. 5,000# 80/100 sand, 35,000# 20/40 sand, 440,000 SCF N2, 650 bbls foam.
4 th Stage:	Speechley (7 holes) (3313.50' to 3356.25') Warren (6 holes) (3237.50' to 3247.75')	60 Quality Foam. 750 gal 15% HCL. 5,000# 80/100 sand, 35,000# 20/40 sand, 464,000 SCF N2, 593 bbls foam.

WELL LOG

KB-GL	0	10	
Fill	10	14	
Sand & Shale & Red Rock	14	53	
Sand & Shale	53	496	
Sand	496	519	½" water @ 200'
Sand & Shale	519	810	
Red Rock	810	882	
Sand & Shale	882	1684	
Sand	1684	1738	
Sand & Shale & Lime	1738	1800	
Big Lime	1800	1853	
Keener	1853	1877	
Big Injun	1877	1931	
Squaw	1931	1970	
Sand & Shale	1970	2130	
Weir	2130	2224	
Shale	2224	2327	
Berea	2327	2363	
Shale	2363	2622	
Gordon	2622	2660	
Shale	2660	3195	
Warren	3195	3254	Gas Checks
Shale	3254	3274	1693' – No Show
Speechley	3274	3364	1820' – Oil Odor
Siltstone & Shale	3364	4376	2007' - Odor
Riley	4376	4463	2702' - Odor
Shale	4463	4740	3202' - Odor
Third Riley	4740	4884	3704' - Odor
Shale	4884	4850	4360' - Odor
Benson	4850	4862	4892' - Odor
Shale	4862	5103	5050' - Odor
Alexander	5103	5204	
Sand & Shale	5204	5336	
T.D.	5336		