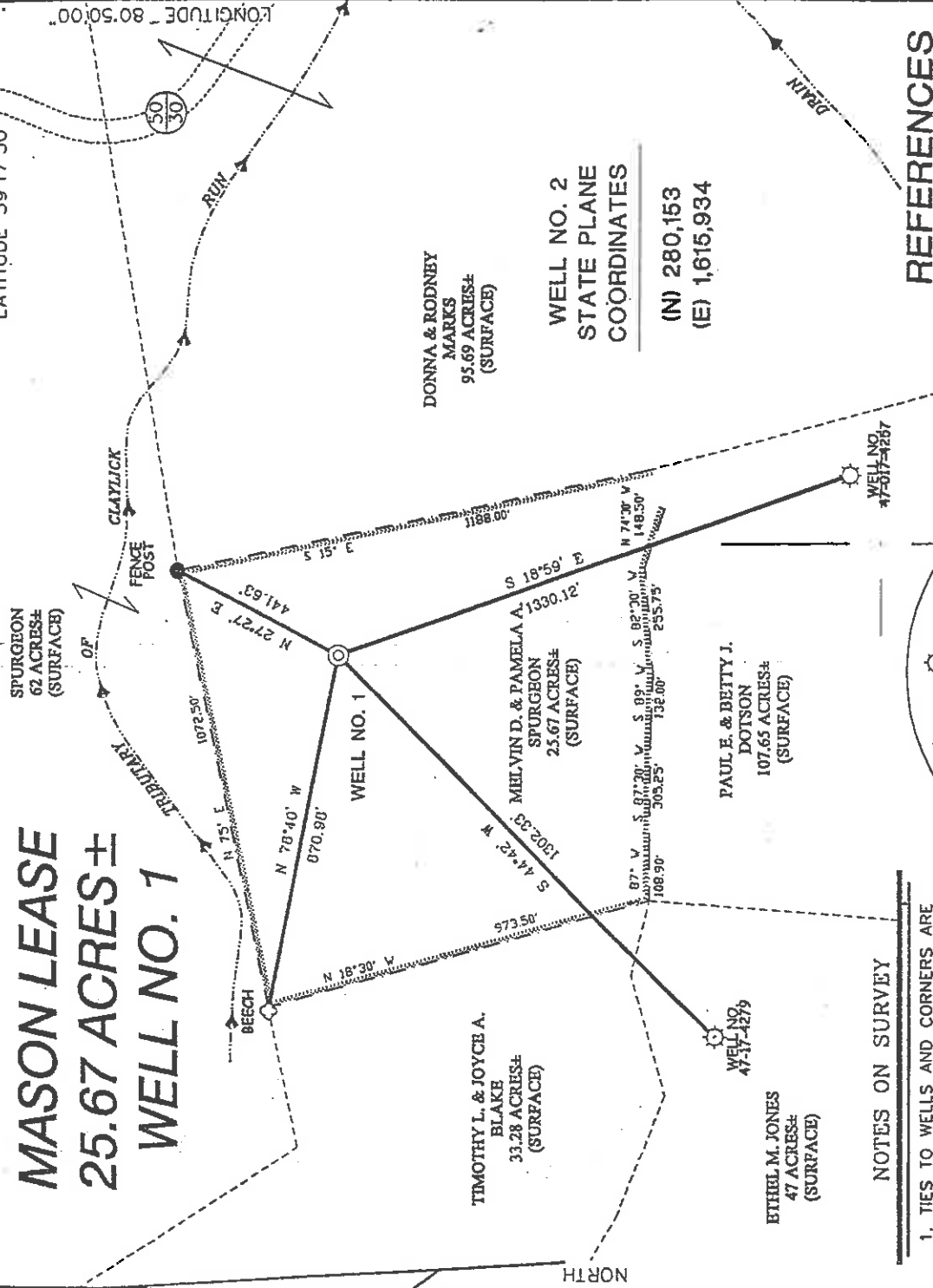


LONG. 80°51'23.2" LATITUDE 39°17'30" LONGITUDE 80°50'00" LAT. 39°15'40.4"

MASON LEASE 25.67 ACRES± WELL NO. 1

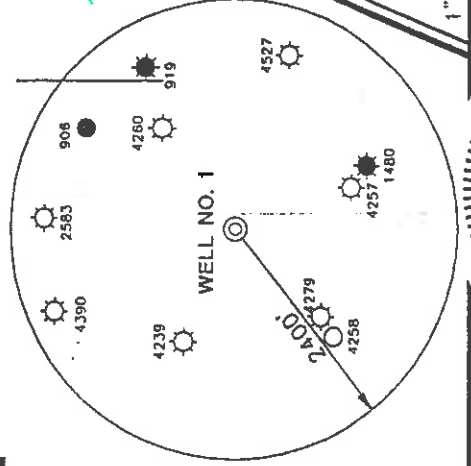


DONNA & RODNEY MARKS
95.69 ACRES±
(SURFACE)

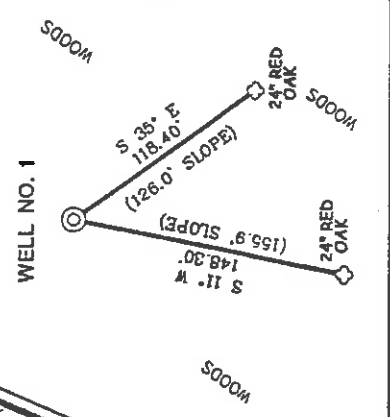
WELL NO. 2
STATE PLANE
COORDINATES
(N) 280,153
(E) 1,615,934

NOTES ON SURVEY

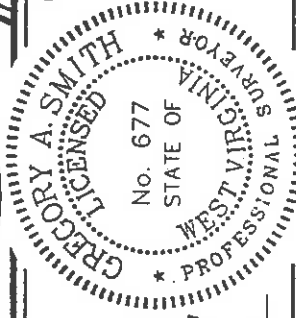
1. TIES TO WELLS AND CORNERS ARE BASED ON STATE PLANE GRID NORTH WV NORTH ZONE NAD '27.
2. TIES TO REFERENCES ARE BASED ON MAGNETIC NORTH 5/9/2002.
3. LEASE BOUNDARY SHOWN HEREON TAKEN FROM A TITLE OPINION DATED APRIL 29, 2002 AS PREPARED BY GARY MORRIS (LAWYER)
4. SURFACE OWNER AND ADJOINER INFORMATION TAKEN FROM THE ASSESSOR AND COUNTY CLERK RECORDS OF DODDRIDGE COUNTY IN MAY, 2001.
5. WELL LAT./LONG. ESTABLISHED BY DGPS(SUBMETER MAPPING GRADE).



REFERENCES



I THE UNDERSIGNED, HEREBY CERTIFY THAT THIS PLAT IS CORRECT TO THE BEST OF MY KNOWLEDGE AND BELIEF AND SHOWS ALL THE INFORMATION REQUIRED BY LAW AND THE REGULATIONS ISSUED AND PRESCRIBED BY THE DEPARTMENT OF ENVIRONMENTAL PROTECTION.



P.S. *Gregory A. Smith*
677

(+) DENOTES LOCATION OF WELL ON UNITED STATES TOPOGRAPHIC MAPS.

DATE MAY 10 20 02
OPERATORS WELL NO. WAYNE MASON NO.1
API WELL NO. 47-17-04689
STATE WV COUNTY PERMIT

MINIMUM DEGREE OF ACCURACY 1 / 200 FILE NO. 501P1(123-27)
PROVEN SOURCE OF ELEVATION TOP OF KNOB 1332' SCALE 1" = 400'

STATE OF WEST VIRGINIA
DIVISION OF ENVIRONMENTAL PROTECTION
OFFICE OF OIL AND GAS



WELL TYPE : OIL GAS INJECTION WASTE DISPOSAL IF "GAS" PRODUCTION STORAGE DEEP SHALLOW

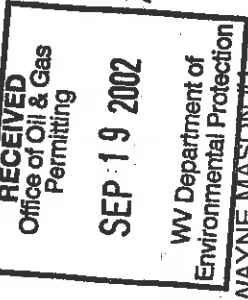
LOCATION : ELEVATION 1118' WATERSHED TRIBUTARY OF CLAYLICK RUN
DISTRICT CENTRAL COUNTY DODDRIDGE QUADRANGLE WEST UNION 7.5'
SURFACE OWNER MELVIN D. SPURGEON & PAMELA ANN SPURGEON ACREAGE 25.67±
ROYALTY OWNER H. WAYNE MASON ET. AL LEASE ACREAGE 25.67± LEASE NO. _____
PROPOSED WORK :
DRILL X CONVERT DRILL DEEPER REDRILL FRACTURE OR STIMULATE X PLUG OFF OLD FORMATION PERFORATE NEW FORMATION PLUG AND ABANDON CLEAN OUT AND REPLUG OTHER _____
PHYSICAL CHANGE IN WELL (SPECIFY) ALEXANDER TARGET FORMATION _____ ESTIMATED DEPTH 5,600'

WELL OPERATOR KEY OIL COMPANY DESIGNATED AGENT JAN CHAPMAN
ADDRESS 22 GARTON PLAZA WESTON, WV 26452

County Name Dodd Permit 4689

6-6 89

State of West Virginia
Division of Environmental Protection
Section of Oil and Gas



Well Operator's Report of Well Work

Farm Name: MELVIN D. SPURGEON & PAMELA ANN APURGEON Operator Well No.: WAYNE MASON #1

LOCATION: Elevation: 1118.00 Quadrangle: WEST UNION

District: CENTRAL County: DODDRIDGE

Latitude: 11,060 Feet South of 39 Deg. 17 Min. 30 Sec.

Longitude: 6,520 Feet West of 80 Deg. 50 Min. 00 Sec.

Company: KEY OIL COMPANY
22 GARTON PLAZA
WESTON, WV 26452-0000

Agent: JAN E. CHAPMAN

Inspector: MIKE UNDERWOOD
Permit Issued: 07/09/02
Well Work Commenced: 07/25/02
Well Work Completed: 07/29/02

Verbal Plugging
Permission granted on:
Rotary X Cable Rig

Total Depth (feet) 5551'

Fresh water depths (ft) NONE

Salt water depths (ft) 746, 773'

Is coal being mined in area (Y / N)? N

Coal Depths (ft): NONE

OPEN FLOW DATA

Producing formation Alexander
Balltown
Rileys
Benson
Gas: Initial open flow 1,586 MCF / d
Final open flow 1,586 MCF / d
Time of open flow between initial and final tests N/A
Pay zone depth (ft) 3866' - 4468'
Oil: Initial open flow 0 Bbl / d
Oil: Final open flow show Bbl / d
Hours
Static rock pressure 1740 psig (surface pressure) after 96 Hours

Second producing formation Commingle
Gas: Initial open flow MCF / d
Final open flow MCF / d
Time of open flow between initial and final tests
Pay zone depth (ft)
Oil: Initial open flow Bbl / d
Oil: Final open flow Bbl / d
Hours
Static rock pressure psig (surface pressure) after Hours

NOTE: ON BACK OF THIS FORM PUT THE FOLLOWING: 1). DETAILS OF PERFORATED INTERVALS, FRACTURING OR STIMULATING, PHYSICAL CHANGE, ETC. 2). THE WELL LOG WHICH IS A SYSTEMATIC DETAILED GEOLOGICAL RECORD OF ALL FORMATIONS, INCLUDING COAL ENCOUNTERED BY THE WELLBORE.

For: KEY OIL COMPANY

By: 

Date: September 3, 2002

PRESIDENT

OCT 18 2002

0000 4689

Casing & Tubing Size	Used in Drilling	Left In Well	Cement Fill Up Cu. Ft.
11 3/4"	130'	130'	65 sks To Surface
8 5/8"	1854'	1854'	370 sks To Surface
4 1/2"	5487'	5487'	370 sks To Surface

Wayne Mason #1 (47-017 - 4689)
 Four Stage Foam Frac - BJ Services

1 st Stage:	Alexander (14 holes) (5347.50' to 5376')	60 Quality Foam. 500 gal. 15% HCL. 60,000# 20/40 sand, 550,000 SCF N2, 818 bbis foam.
2 nd Stage:	Benson (9 holes) (5057' to 5059') Second Riley (3 holes) (4867.75' to 4868.25')	60 Quality Foam. 750 gal 15% HCL. 35,000# 20/40 sand, 390,000 SCF N2, 575 bbis foam.
3 rd Stage:	Riley (9 holes) (4656' to 4678.25') Balltown (4 holes) (4449.50' to 4465.25')	60 Quality Foam. 1,000 gal 15% HCL. 5,000# 80/100 sand, 25,000# 20/40 sand, 380,000 SCF N2, 559 bbis foam.
4 th Stage:	Balltown (14 holes) (3916.25' to 4288.25')	60 Quality Foam. 1,000 gal 15% HCL. 5,000# 80/100 sand, 45,000# 20/40 sand, 502,000 SCF N2, 689 bbis foam.

WELL LOG

KB-GL	0	10	
Fill	10	12	
Shale & Red Rock	12	73	
Sand & Shale	73	114	
Shale & Red Rock	114	243	
Sand & Shale	243	550	
Shale & Red Rock	550	715	
Sand	715	790	Damp @ 746'
Sand & Shale	790	984	Damp @ 773'
Shale & Red Rock	984	1060	
Sand & Shale	1060	1215	
Red Rock	1215	1240	
Sand & Shale	1240	1397	
Sand	1397	1410	
Sand & Shale	1410	1499	
Sand	1499	1895	
Sand & Shale	1895	2090	
Little Lime	2090	2140	
Big Lime	2140	2176	
Big Injun	2176	2246	
Sand & Shale	2246	2410	
Weir	2410	2536	
Shale & Silstone	2536	3466	
Warren	3466	3536	
Shale	3536	3549	
Spechley	3549	3675	
Shale	3675	3866	
Balltown	3866	4468	
Shale	4468	4620	
Riley	4620	4680	
Shale	4680	4855	
Second Riley	4855	4914	
Shale	4914	4952	
Third Riley	4952	5010	
Shale	5010	5050	
Benson	5050	5064	
Shale	5064	5301	
Alexander	5301	5389	
Sand & Shale	5389	5551	
T.D.	5551		

Gas Checks

- 2093' - No show
- 2251' - No Show
- 3509' - No Show
- 3920' - No Show
- 4674' - No show
- 5053' - Odor
- 5366' - Odor