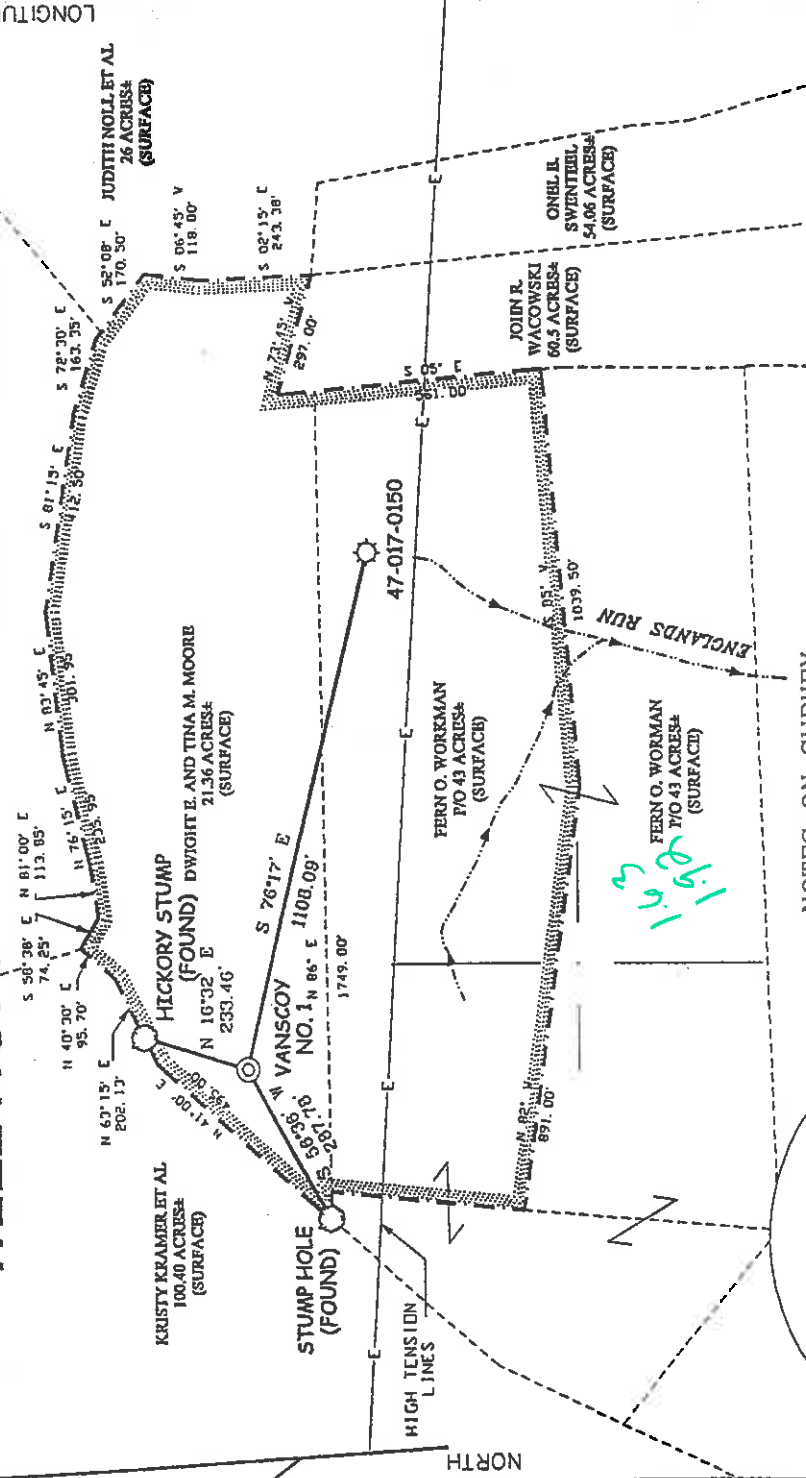


VANSCOY HEIRS LEASE 43.36 ACRES ± WELL NO. 1

WELL NO. 1
STATE PLANE
COORDINATES
(N) 297,206
(E) 1,659,737

LONGITUDE 80°40'00"

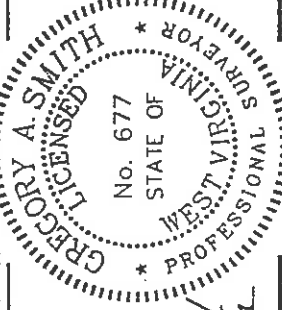
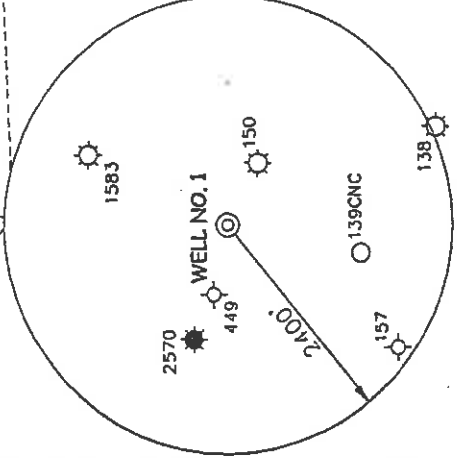
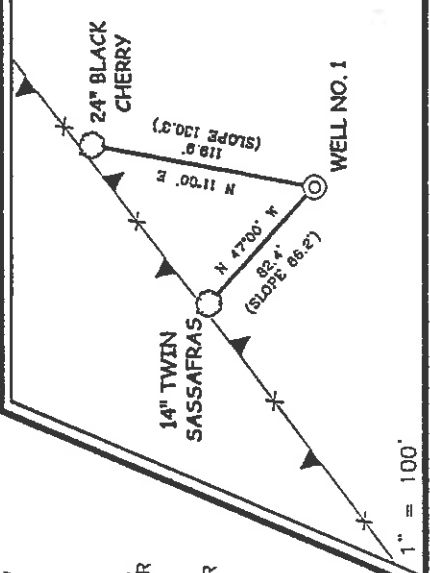
8.600'



NOTES ON SURVEY

1. TIES TO WELLS AND CORNERS ARE BASED ON STATE PLANE GRID NORTH W/ NORTH ZONE NAD '27.
2. TIES TO REFERENCES ARE BASED ON MAGNETIC NORTH 2-19-02.
3. LEASE BOUNDARY SHOWN HEREON TAKEN FROM A PLAT DATED AUGUST 23, 1944 AS PREPARED BY J. M. MARTIN FOR A.P.I. NO. 47-017-0150.
4. SURFACE OWNER AND ADJOINER INFORMATION TAKEN FROM THE ASSESSOR AND COUNTY CLERK RECORDS OF DODDRIDGE COUNTY IN JANUARY 2002.
5. WELL LAT./LONG. ESTABLISHED BY DGPS (SUBMETER MAPPING GRADE).

REFERENCES



I THE UNDERSIGNED, HEREBY CERTIFY THAT THIS PLAT IS CORRECT TO THE BEST OF MY KNOWLEDGE AND BELIEF AND SHOWS ALL THE INFORMATION REQUIRED BY LAW AND THE REGULATIONS ISSUED AND PRESCRIBED BY THE DEPARTMENT OF ENVIRONMENTAL PROTECTION.

P.S. 677 *Gregory A. Smith*

(+) DENOTES LOCATION OF WELL ON UNITED STATES TOPOGRAPHIC MAPS.
DATE FEBRUARY 27, 20 02
OPERATORS WELL NO. VANSCOY WELL NO. 1
API WELL NO. 47-017-04687
STATE COUNTY PERMIT

MINIMUM DEGREE OF ACCURACY 1 / 200 FILE NO. 4961P1 (114-69)
PROVEN SOURCE SCALE 1" = 400'
TOP OF KNOB ELEVATION 1,420'

STATE OF WEST VIRGINIA
DIVISION OF ENVIRONMENTAL PROTECTION
OFFICE OF OIL AND GAS



WELL TYPE : OIL GAS INJECTION WASTE DISPOSAL "GAS" PRODUCTION STORAGE DEEP SHALLOW

LOCATION : ELEVATION 1,329' WATERSHED ENGLANDS RUN
DISTRICT WEST UNION COUNTY DODDRIDGE
SURFACE OWNER DWIGHT E. AND TINA M. MOORE QUADRANGLE SMITHBURG 7.5
ROYALTY OWNER C. M. VANSCOY HEIRS ET AL. ACREAGE 21.36
LEASE ACRES 43.36
PROPOSED WORK : LEASE NO. _____
DRILL CONVERT DRILL DEEPER REDRILL FRACTURE OR STIMULATE PLUG OFF OLD
FORMATION PERFORATE NEW FORMATION PLUG AND ABANDON CLEAN OUT AND REPLUG OTHER
PHYSICAL CHANGE IN WELL (SPECIFY) _____ TARGET FORMATION GORDON
ESTIMATED DEPTH 2,900'

WELL OPERATOR KEY OIL COMPANY DESIGNATED AGENT JAN CHAPMAN
ADDRESS 22 GARTON PLAZA WESTON, WV 26452 ADDRESS 22 GARTON PLAZA WESTON, WV 26452

(Smithton-Field, Sealed 99)

MAY 8 - 2002

4687

PERMIT

State of West Virginia
Division of Environmental Protection
Section of Oil and Gas

MP

Well Operator's Report of Well Work

Farm Name: DWIGHT T. & TINA M. MOORE

Operator Well No.: VANSKOY #1

LOCATION: Elevation: 1329.00

Quadrangle: SMITHBURG

District: WEST UNION

County: DODDRIDGE

Latitude: 8600 Feet South of 39 Deg. 20 Min. 00 Sec.

Longitude: 10120 Feet West of 80 Deg. 40 Min. 00 Sec.

Company: KEY OIL COMPANY
22 GARTON PLAZA
WESTON, WV 26452-0000

Agent: JAN E. CHAPMAN

Inspector: MIKE UNDERWOOD
Permit Issued: 05/03/03
Well Work Commenced: 09/02/03
Well Work Completed: 09/10/03

Verbal Plugging
Permission granted on: _____ Rig
Rotary X Cable _____

Total Depth (feet) 3049'

Fresh water depths (ft) NONE

Salt water depths (ft) 1190'

Is coal being mined in area (Y / N)? N

Coal Depths (ft): NONE

OPEN FLOW DATA

Blue Monday
Keener
Big Injun
Gordon

Producing formation _____ MCF / d
Gas: Initial open flow _____ MCF / d
Final open flow 2,698 MCF / d
Time of open flow between initial and final tests _____ N/A _____ Hours
Static rock pressure 340 psig (surface pressure) after 96 _____ Hours

Second producing formation Commingle
Gas: Initial open flow _____ MCF / d
Final open flow _____ MCF / d
Time of open flow between initial and final tests _____ _____ Hours
Static rock pressure _____ psig (surface pressure) after _____ Hours

Pay zone depth (ft) _____
Oil: Initial open flow _____ Bbl / d
Oil: Final open flow _____ show _____ Bbl / d
Oil: Final open flow _____ N/A _____ Hours
Pay zone depth (ft) _____
Oil: Initial open flow _____ Bbl / d
Oil: Final open flow _____ Bbl / d
Time of open flow between initial and final tests _____ _____ Hours
Static rock pressure _____ psig (surface pressure) after _____ Hours

2057' - 2108'
2171' - 2198'
2205' - 2258'
2808' - 2862'

RECEIVED
Office of Oil & Gas
Office of Chief
JAN 23 2004
Environmental Protection

DODD 4687

NOTE: ON BACK OF THIS FORM PUT THE FOLLOWING: 1). DETAILS OF PERFORATED INTERVALS, FRACTURING OR STIMULATING, PHYSICAL CHANGE, ETC. 2). THE WELL LOG WHICH IS A SYSTEMATIC DETAILED GEOLOGICAL RECORD OF ALL FORMATIONS, INCLUDING COAL ENCOUNTERED BY THE WELLBORE.

For: KEY OIL COMPANY

By: *Jan Chapman*
Date: January 11, 2004

PRESIDENT

FEB 19 2004

Vanscoy #1 (47-017-4687)
 Three Stage Foam Frac - BJ Services

1 st Stage:	Gordon (15 holes) (2836' to 2854')	60 Quality Foam. 500 gal. 15% HCL. 40,000# 20/40 sand, 420,000 SCF N2, 615 bbis foam.
2 nd Stage:	Big Injun (3 holes) (2243' to 2246') Keener (12 holes) (2178' - 2188')	60 Quality Foam. 750 gal 15% HCL. 40,000# 20/40 sand, 420,000 SCF N2, 600 bbis foam.
3 rd Stage:	Blue Monday (15 holes) (2069' to 2093')	60 Quality Foam. 750 gal 15% HCL. 35,000# 20/40 sand, 380,000 SCF N2, 515 bbis foam.

WELL LOG

KB-GL	0	10	
Fill	10	12	
Sand	12	77	
Red Rock	77	81	
Sand & Shale	81	116	
Sand	116	150	
Red Rock	150	171	
Sand	171	235	
Sand & Shale	235	270	
Sand	270	300	
Red Rock	300	312	
Sand & Shale	312	360	
Red Rock	360	377	
Sand & Shale	377	730	
Sand	730	750	
Red Rock	750	790	
Sand & Shale	790	1300	
Sand	1300	1370	
Sand & Shale	1370	2057	
Blue Monday	2057	2108	
Big Lime	2108	2171	
Keener	2171	2198	
Shale	2198	2205	
Big Injun	2205	2258	
Shale	2258	2415	
Weir	2415	2490	
Shale	2490	2611	
Berea	2611	2640	
Sand & Shale	2640	2808	
Gordon	2808	2862	
Shale	2862	2862	
TD	3049		

Damp @ 1190'

Gas Checks
 2065' - Oil Odor