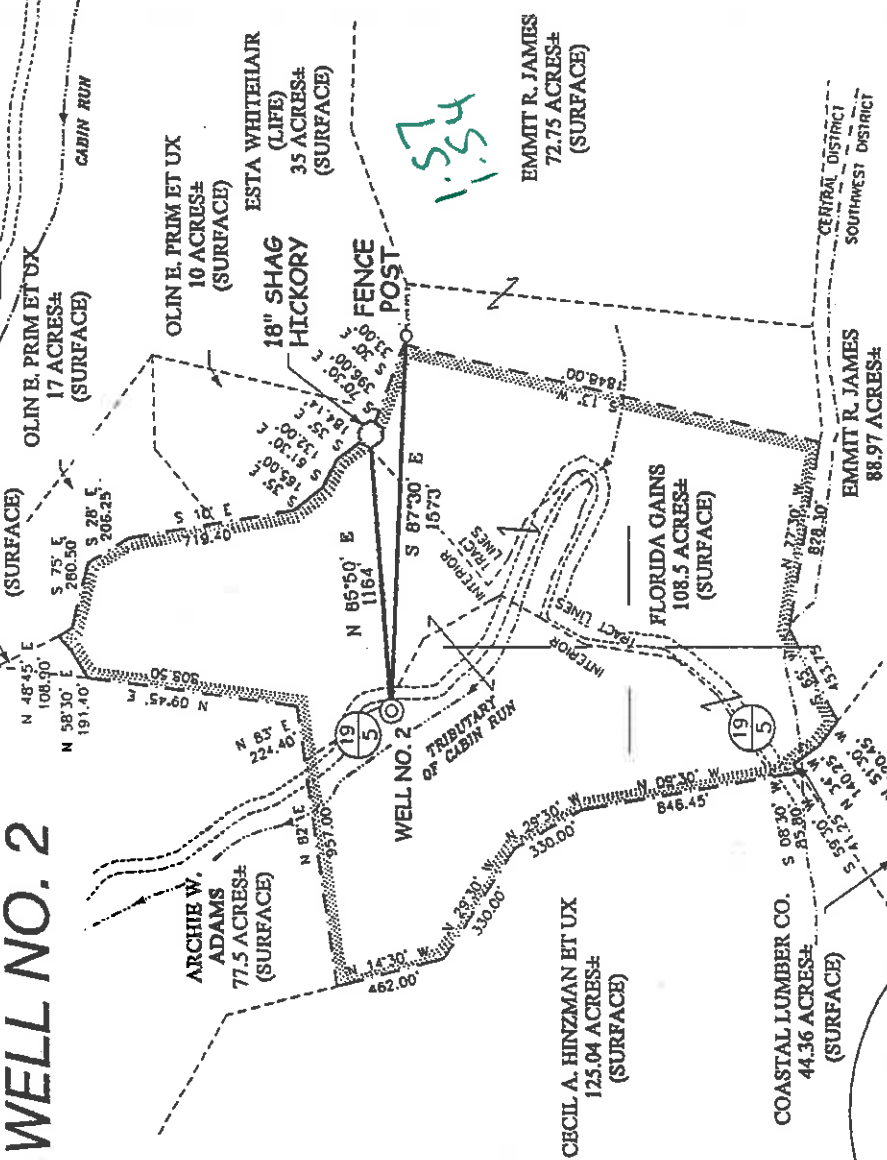


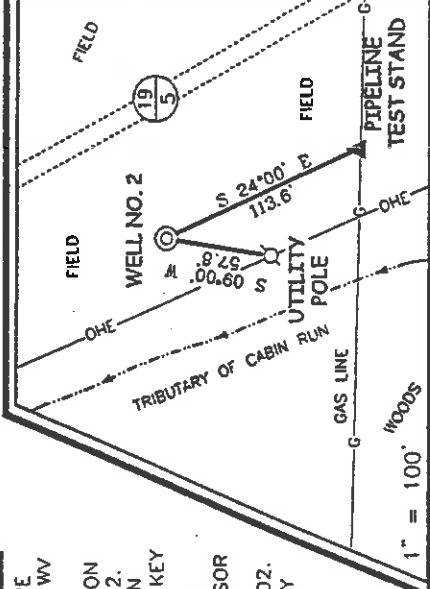
JACKSON LEASE 108.5 OF 123.86 ACRES ± WELL NO. 2



NOTES ON SURVEY

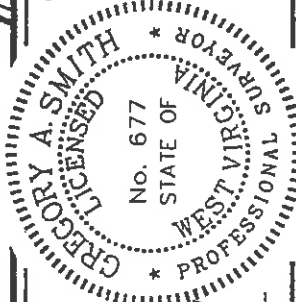
1. TIES TO WELLS AND CORNERS ARE BASED ON STATE PLANE GRID NORTH WV NORTH ZONE NAD '27
2. TIES TO REFERENCES ARE BASED ON MAGNETIC NORTH FEBRUARY 27, 2002.
3. LEASE BOUNDARY SHOWN HEREON TAKEN FROM A DEED OBTAINED FROM KEY OIL COMPANY.
4. SURFACE OWNER AND ADJOINER INFORMATION TAKEN FROM THE ASSESSOR AND COUNTY CLERK RECORDS OF DODDRIDGE COUNTY IN FEBRUARY 2002.
5. WELL LAT./LONG. ESTABLISHED BY DGPS(SUBMETER MAPPING GRADE).

REFERENCES



I THE UNDERSIGNED, HEREBY CERTIFY THAT THIS PLAT IS CORRECT TO THE BEST OF MY KNOWLEDGE AND BELIEF AND SHOWS ALL THE INFORMATION REQUIRED BY LAW AND THE REGULATIONS ISSUED AND PRESCRIBED BY THE DEPARTMENT OF ENVIRONMENTAL PROTECTION.

P.S. *Gregory A. Smith*
677



(+) DENOTES LOCATION OF WELL ON UNITED STATES TOPOGRAPHIC MAPS.
DATE MARCH 3 20 02
OPERATORS WELL NO. 2
API WELL NO. 47-17-04680
STATE COUNTY PERMIT

MINIMUM DEGREE OF ACCURACY 1 / 200 FILE NO. 4972P2 (114-72)
PROVEN SOURCE OF ELEVATION JUNCTION OF ROADS ELEVATION 865'
SCALE 1" = 800'

STATE OF WEST VIRGINIA
DIVISION OF ENVIRONMENTAL PROTECTION
OFFICE OF OIL AND GAS



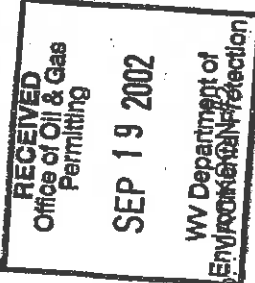
WELL TYPE : OIL GAS LIQUID WASTE DISPOSAL INJECTION "GAS" PRODUCTION STORAGE DEEP SHALLOW

LOCATION : ELEVATION 899' WATERSHED TRIBUTARY OF CABIN RUN
DISTRICT CENTRAL COUNTY DODDRIDGE QUADRANGLE OXFORD 7.5'
SURFACE OWNER FLORIDA GAINS ACREAGE 108.5
ROYALTY OWNER ROBERT JACKSON ET AL LEASE ACREAGE 123.86± LEASE NO. _____

PROPOSED WORK :
DRILL CONVERT DRILL DEEPER REDRILL FRACTURE OR STIMULATE PLUG OFF OLD FORMATION PERFORATE NEW FORMATION PLUG AND ABANDON CLEAN OUT AND REPLUG OTHER _____
PHYSICAL CHANGE IN WELL (SPECIFY) _____ TARGET FORMATION ALEXANDER ESTIMATED DEPTH 5,600'

WELL OPERATOR KEY OIL COMPANY DESIGNATED AGENT JAN CHAPMAN
ADDRESS 22 GARTON PLAZA WESTON, WV 26452 ADDRESS 22 GARTON PLAZA WESTON, WV 26452

State of West Virginia
Division of Environmental Protection
Section of Oil and Gas



Well Operator's Report of Well Work

Farm Name: FLORIDA GAINS

Operator Well No.
Quadrangle: OXFORD

LOCATION: Elevation: 899.00

District: CENTRAL
Latitude: 8,300 Feet South of 39 Deg. 15 Min. 00 Sec.
Longitude: 8,150 Feet West of 80 Deg. 50 Min. 00 Sec.

County: DODDRIDGE

Company: KEY OIL COMPANY
22 GARTON PLAZA
WESTON, WV 26452-0000

Agent: JAN E. CHAPMAN

Inspector: MIKE UNDERWOOD
Permit Issued: 04/15/02
Well Work Commenced: 07/19/02
Well Work Completed: 07/23/02

Verbal Plugging
Permission granted on: Rig
Rotary X Cable 5340'

Total Depth (feet) 5340'
Fresh water depths (ft) 108'
Salt water depths (ft) 1498'

Is coal being mined in area (Y / N)? N
Coal Depths (ft): NONE

OPEN FLOW DATA

Warren
Speechley
Balltown
Rileys
Benson

Producing formation Alexander
Gas: Initial open flow No Show MCF / d Oil: Initial open flow 0 Bbl / d
Final open flow 1,586 MCF / d Oil: Final open flow show Bbl / d
Time of open flow between initial and final tests N/A Hours
Static rock pressure 1750 psig (surface pressure) after 96 Hours

Second producing formation Commingled
Gas: Initial open flow MCF / d Oil: Initial open flow Bbl / d
Final open flow MCF / d Oil: Final open flow Bbl / d
Time of open flow between initial and final tests Hours
Static rock pressure psig (surface pressure) after Hours

NOTE: ON BACK OF THIS FORM PUT THE FOLLOWING: 1). DETAILS OF PERFORATED INTERVALS, FRACTURING OR STIMULATING, PHYSICAL CHANGE, ETC. 2). THE WELL LOG WHICH IS A SYSTEMATIC DETAILED GEOLOGICAL RECORD OF ALL FORMATIONS, INCLUDING COAL ENCOUNTERED BY THE WELLBORE.

For: KEY OIL COMPANY

By: [Signature]
Date: September 3, 2002

PRESIDENT

0000 4680

Casing & Tubing Size	Used in Drilling	Left in Well	Cement Fill Up Cu. Ft.
8 5/8"	929'	929'	180 sks To Surface
4 1/2"	5165'	5165'	460 sks

Jackson #2 (47-017 - 4680)
Four Stage Foam Frac -- BJ Services

1 st Stage:	Alexander (13 holes) (5078' to 5123.25')	60 Quality Foam. 500 gal. 15% HCL. 60,000# 20/40 sand, 550,000 SCF N2, 813 bbis foam.
2 nd Stage:	Benson (7 holes) (4807.25' to 4808.75') Third Riley (6 holes) (4657' to 4743.50')	60 Quality Foam. 750 gal 15% HCL. 35,000# 20/40 sand, 390,000 SCF N2, 571 bbis foam.
3 rd Stage:	Riley (8 holes) (4396.50' to 4415.25') Balltown (5 holes) (4204.50' to 4322.25')	60 Quality Foam. 1,000 gal 15% HCL. 5,000# 80/100 sand, 25,000# 20/40 sand, 380,000 SCF N2, 555 bbis foam.
4 th Stage:	Balltown (5 holes) (3728' to 3770') Speechley (2 holes) (3416.50' & 3416.76') Warren (9 holes) (3227' to 3292.25')	60 Quality Foam. 1,000 gal 15% HCL. 5,000# 80/100 sand, 45,000# 20/40 sand, 502,000 SCF N2, 689 bbis foam.

WELL LOG

KB-GL	0	10	
Fill	10	14	
Sand & Gravel	14	33	
Sand & Shale	33	126	
Red Rock	126	158	1" water @ 108"
Sand & Shale	158	180	
Red Rock	180	209	
Sand & Shale	209	289	
Sand	289	319	
Sand & Shale	319	776	
Shale & Red Rock	776	836	
Sand & Shale	836	987	
Sand	987	999	
Sand & Shale	999	1405	
Sand & Shale & Lime	1405	1854	
Little Lime	1854	1886	
Big Lime	1886	1943	
Big Injun	1943	2003	
Sand & Shale	2003	2172	
Weir	2172	2301	
Shale	2301	2361	
Berea	2361	2373	
Sand & Shale	2373	3224	
Warren	3224	3294	
Shale	3294	3307	
Speechley	3307	3430	
Shale	3430	3641	
Balltown	3641	4281	
Shale	4281	4368	
Riley	4368	4439	
Shale	4439	4647	
Third Riley	4647	4762	
Shale	4762	4804	
Benson	4804	4815	
Shale	4815	5049	
Alexander	5049	5143	
Sand & Shale	5143	5340	
T.D.	5340		

Gas Checks
SOAPED HOLE
NO GAS CHECKS