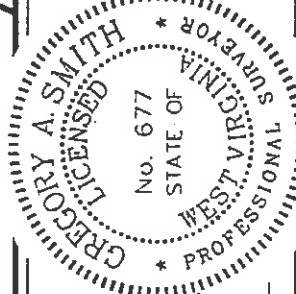
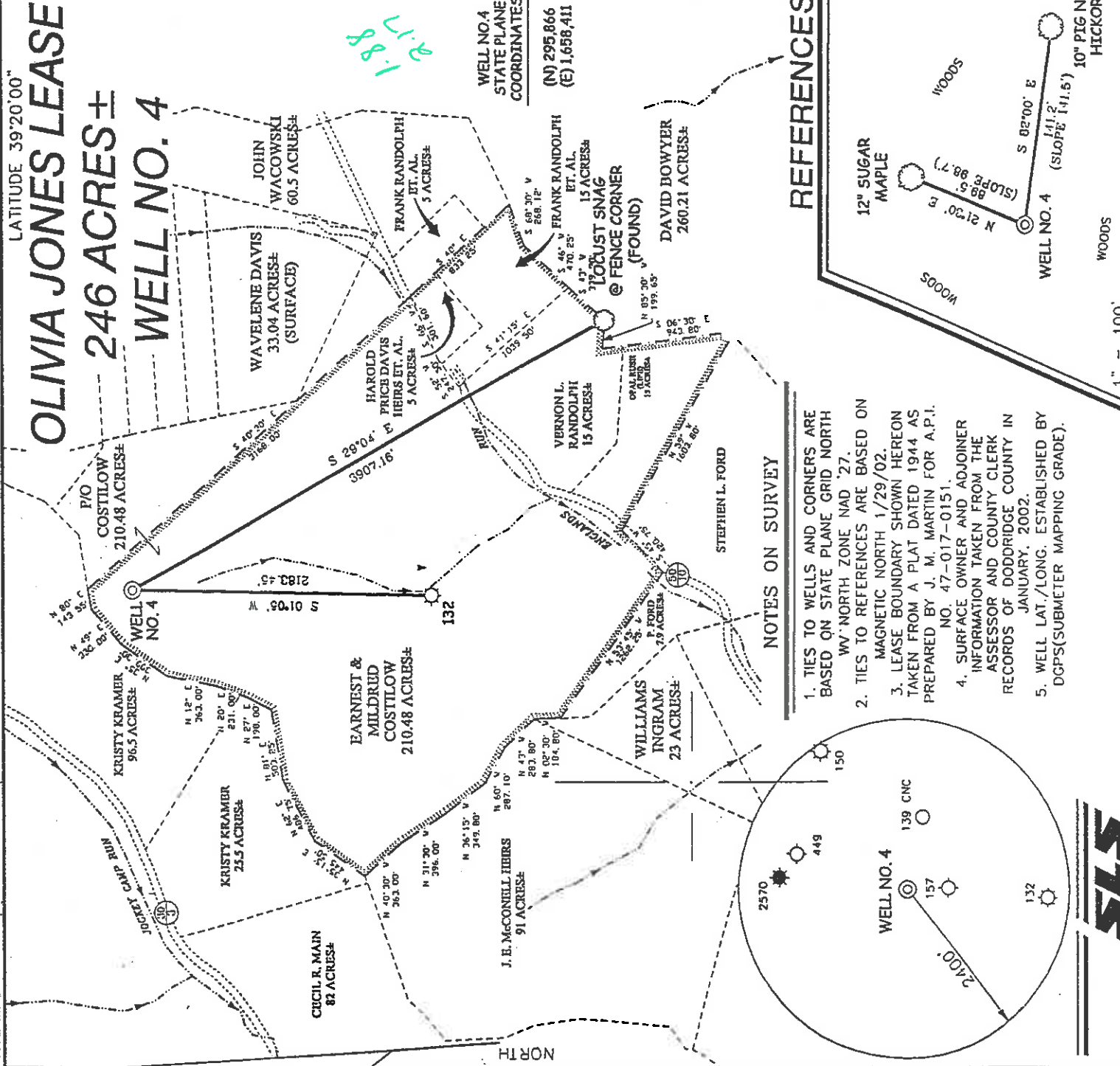


OLIVIA JONES LEASE 246 ACRES ± WELL NO. 4



I THE UNDERSIGNED, HEREBY CERTIFY THAT THIS PLAT IS CORRECT TO THE BEST OF MY KNOWLEDGE AND BELIEF AND SHOWS ALL THE INFORMATION REQUIRED BY LAW AND THE REGULATIONS ISSUED AND PRESCRIBED BY THE DEPARTMENT OF ENVIRONMENTAL PROTECTION.

P.S. 677 *Gregory A. Smith*

MINIMUM DEGREE OF ACCURACY 1 / 200 FILE NO. 4964P4 (114-66)
 PROVEN SOURCE SCALE 1" = 1000'
 TOP OF KNOB ELEVATION 1,410'

WELL TYPE: OIL GAS LIQUID WASTE INJECTION DISPOSAL "GAS" PRODUCTION STORAGE DEEP SHALLOW

LOCATION: ELEVATION 1,244' WATERSHED TRIBUTARY OF ENGLANDS RUN

DISTRICT WEST UNION COUNTY DODDRIDGE QUADRANGLE SMITHBURG 7.5'
 SURFACE OWNER EARNEST COSTILOW ET UX ACREAGE 210.48
 ROYALTY OWNER PENSION PLANS, INC. LEASE ACREAGE 246
 PROPOSED WORK: LEASE NO.

DRILL CONVERT DRILL DEEPER REDRILL FRACTURE OR STIMULATE PLUG OFF OLD
 FORMATION PERFORATE NEW FORMATION PLUG AND ABANDON CLEAN OUT AND REFLUG OTHER
 PHYSICAL CHANGE IN WELL (SPECIFY) GORDON TARGET FORMATION
 ESTIMATED DEPTH 2900'

WELL OPERATOR KEY OIL COMPANY DESIGNATED AGENT JAN CHAPMAN
 ADDRESS 22 CARTON PLAZA WESTON, WV 26452 ADDRESS 22 CARTON PLAZA WESTON, WV 26452

STATE OF WEST VIRGINIA
 DIVISION OF ENVIRONMENTAL PROTECTION
 OFFICE OF OIL AND GAS

(+) DENOTES LOCATION OF WELL ON UNITED STATES TOPOGRAPHIC MAPS.
 DATE FEBRUARY 8, 2002
 OPERATORS WELL NO. OLIVIA JONES NO. 4
 API WELL NO. 47-17-04674
 COUNTY PERMIT

(Smickton-Flint-Jededia 99)

MAY 3 - 2002

State of West Virginia
Division of Environmental Protection
Section of Oil and Gas

MP

Well Operator's Report of Well Work

Farm Name: EARNEST COSTILOW, ET UX

Operator Well No. : OLIVIA JONES #4

LOCATION: Elevation: 1244.00

Quadrangle: SMITHBURG

District: WEST UNION
Latitude: 9950 Feet South of 39 Deg. 20 Min. 00 Sec.
Longitude: 11470 Feet West of 80 Deg. 40 Min. 00 Sec.

County: DODDRIDGE

Company: KEY OIL COMPANY
22 GARTON PLAZA
WESTON, WV 26452-0000

Agent: JAN E. CHAPMAN

Inspector: MIKE UNDERWOOD
Permit Issued: 04/29/02
Well Work Commenced: 08/23/03
Well Work Completed: 09/03/03

Verbal Plugging
Permission granted on: _____ Rig
Rotary X Cable _____
Total Depth (feet) 3020'
Fresh water depths (ft) NONE
Salt water depths (ft) 1636'

Is coal being mined in area (Y / N) ? N
Coal Depths (ft) : NONE

Casing & Tubing Size	Used in Drilling	Left In Well	Cement Fill Up Cu. Ft.
8 5/8"	1239'	1239'	285 sks To Surface
4 1/2"	2857'	2857'	250 sks

OPEN FLOW DATA

Keener
Big Injun
Gordon

Producing formation _____ MCF / d
Gas: Initial open flow _____ MCF / d
Final open flow 603 MCF / d
Time of open flow between initial and final tests N/A
Static rock pressure 200 psig (surface pressure) after 96 Hours

2036' - 2127'
2131' - 2189'
2716' - 2775'

Pay zone depth (ft)
Oil: Initial open flow 0 Bbl / d
Oil: Final open flow show Bbl / d
Hours

Second producing formation Commingled
Gas: Initial open flow _____ MCF / d
Final open flow _____ MCF / d
Time of open flow between initial and final tests _____ Hours
Static rock pressure _____ psig (surface pressure) after _____ Hours

Pay zone depth (ft)
Oil: Initial open flow _____ Bbl / d
Oil: Final open flow _____ Bbl / d
Hours

RECEIVED
Office of Oil & Gas
Office of Chief
JAN 23 2004
WV Department of Protection
Environmental

NOTE: ON BACK OF THIS FORM PUT THE FOLLOWING: 1). DETAILS OF PERFORATED INTERVALS, FRACTURING OR STIMULATING, PHYSICAL CHANGE, ETC. 2). THE WELL LOG WHICH IS A SYSTEMATIC DETAILED GEOLOGICAL RECORD OF ALL FORMATIONS, INCLUDING COAL ENCOUNTERED BY THE WELLBORE.

For: KEY OIL COMPANY

By: *[Signature]*

Date: January 10, 2004

PRESIDENT

FEB 13 2004

DODD. 4674

Olivia Jones #4 (47-017-4674)
Two Stage Foam Frac - Universal Well Services

1st Stage: Gordon (16 holes) (2754' to 2773') 60 Quality Foam. 500 gal. 15% HCL.
40,000# 20/40 sand, 420,000 SCF N2,
615 bbls foam.

2nd Stage: Big Injun (20 holes) (2140' to 2177') 60 Quality Foam. 750 gal. 15% HCL.
Keener (10 holes) (2100' to 2112') 40,000# 20/40 sand, 420,000 SCF N2,
600 bbls foam.

WELL LOG

KB-GL	0	10
Fill	10	16
Shale & Red Rock	16	31
Sand & Shale	31	50
Sand	50	100
Sand & Shale & Red Rock	100	220
Sand & Shale	220	296
Sand	296	330
Red Rock	330	347
Sand & Shale	347	540
Red Rock	540	560
Sand & Shale	560	720
Red Rock	720	750
Sand & Shale	750	940
Red Rock	940	1009
Sand & Shale	1009	1290
Sand	1290	1293
Sand & Shale	1293	1850
Sand	1850	1908
Sand & Shale	1908	1952
Little Lime	1952	1980
Shale	1980	1997
Big Lime	1997	2036
Keener	2036	2127
Shale	2127	2131
Big Injun	2131	2189
Shale	2189	2325
Weir	2325	2406
Shale	2406	2528
Berea	2528	2550
Sand & Shale	2550	2716
Gordon	2716	2775
Shale	2775	3020
TD	3020	

Damp @ 1636'

Gas Checks

2000' - Odor
2050' - Odor
2170' -- show oil