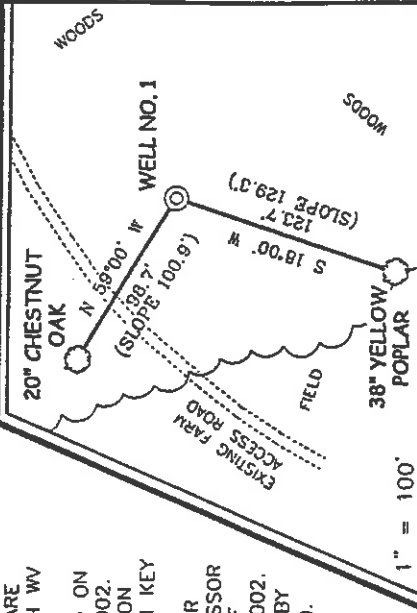


NOTES ON SURVEY

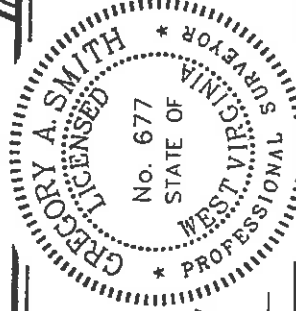
1. TIES TO WELLS AND CORNERS ARE BASED ON STATE PLANE GRID NORTH WV NORTH ZONE NAD '27.
2. TIES TO REFERENCES ARE BASED ON MAGNETIC NORTH FEBRUARY 27, 2002.
3. LEASE BOUNDARY SHOWN HEREON TAKEN FROM A DEED OBTAINED FROM KEY OIL COMPANY.
4. SURFACE OWNER AND ADJOINER INFORMATION TAKEN FROM THE ASSESSOR AND COUNTY CLERK RECORDS OF DODDRIDGE COUNTY IN FEBRUARY 2002.
5. WELL LAT./LONG. ESTABLISHED BY DGPS (SUBMETER MAPPING GRADE).

REFERENCES



I THE UNDERSIGNED, HEREBY CERTIFY THAT THIS PLAT IS CORRECT TO THE BEST OF MY KNOWLEDGE AND BELIEF AND SHOWS ALL THE INFORMATION REQUIRED BY LAW AND THE REGULATIONS ISSUED AND PRESCRIBED BY THE DEPARTMENT OF ENVIRONMENTAL PROTECTION.

P.S. 677 *Gregory A. Smith*



(+) DENOTES LOCATION OF WELL ON UNITED STATES TOPOGRAPHIC MAPS.  
DATE MARCH 3, 20 02

OPERATORS WELL NO. 1  
API WELL NO. 47-17  
STATE COUNTY PERMIT NO. 04669

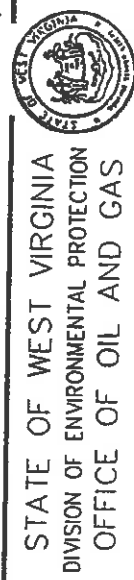
MINIMUM DEGREE OF ACCURACY 1 / 200 FILE NO. 4972P1 (114-73)  
PROVEN SOURCE OF ELEVATION JUNCTION OF ROADS ELEVATION 865'  
SCALE 1" = 800'

WELL TYPE : OIL  GAS  LIQUID WASTE DISPOSAL  "GAS" PRODUCTION  STORAGE  DEEP  SHALLOW   
LOCATION : ELEVATION 1,093' WATERSHED TRIBUTARY OF CABIN RUN

DISTRICT CENTRAL COUNTY DODDRIDGE QUADRANGLE OXFORD 7.5'  
SURFACE OWNER FLORIDA GAINS ACREAGE 108.5  
ROYALTY OWNER ROBERT JACKSON ET AL LEASE ACREAGE 123.86± LEASE NO. \_\_\_\_\_

PROPOSED WORK :  
DRILL  CONVERT  DRILL DEEPER  FRACTURE OR STIMULATE  PLUG OFF OLD FORMATION  PERFORATE NEW FORMATION  PLUG AND ABANDON  CLEAN OUT AND REPLUG  OTHER \_\_\_\_\_  
PHYSICAL CHANGE IN WELL (SPECIFY) \_\_\_\_\_ TARGET FORMATION ALEXANDER ESTIMATED DEPTH 5,600'

WELL OPERATOR KEY OIL COMPANY DESIGNATED AGENT JAN CHAPMAN  
ADDRESS 22 GARTON PLAZA WESTON, WV 26452 ADDRESS 22 GARTON PLAZA WESTON, WV 26452



STATE OF WEST VIRGINIA  
DIVISION OF ENVIRONMENTAL PROTECTION  
OFFICE OF OIL AND GAS

COUNTY NAME DODD PERMIT 4669

6-6 133

State of West Virginia  
Division of Environmental Protection  
Section of Oil and Gas

Revised AP

Well Operator's Report of Well Work

Farm name: FLORIDA GAINS

Operator Well No. : JACKSON #1

LOCATION: Elevation: 1093.00

Quadrangle: OXFORD

District: CENTRAL  
Latitude: 9,480 Feet South of 39 Deg. 15 Min. 30 Sec.  
Longitude: 7,560 Feet West of 80 Deg. 50 Min. 00 Sec.

County: DODDRIDGE

Company: KEY-OIL COMPANY  
22 GARTON PLAZA  
WESTON, WV 26452-0000

Agent: JAN E. CHAPMAN

Inspector: MIKE UNDERWOOD  
Permit Issued: 04/15/02  
Well Work Commenced: 06/16/02  
Well Work Completed: 06/26/02

Verbal Plugging  
Permission granted on: \_\_\_\_\_ Rig  
Rotary X Cable \_\_\_\_\_  
Total Depth ( feet ) 5481'  
Fresh water depths ( ft ) 43'  
Salt water depths ( ft ) NONE

Is coal being mined in area ( Y / N ) ? N  
Coal Depths ( ft ) : NONE

OPEN FLOW DATA

Warren  
Speechley  
Balltown  
Rileys  
Benson

3387' - 3462'  
3471' - 3594'  
3802' - 4498'  
4551' - 4607'  
4977' - 4988'

Producing formation Alexander  
Gas: Initial open flow show MCF / d    Pay zone depth ( ft )  
Final open flow 1,532 MCF / d    Oil: Initial open flow 0 Bbl / d  
Time of open flow between initial and final tests N/A    Oil: Final open flow show Bbl / d  
Static rock pressure 1660 psig ( surface pressure ) after 96 Hours

Second producing formation Commingle  
Gas: Initial open flow \_\_\_\_\_ MCF / d    Pay zone depth ( ft )  
Final open flow \_\_\_\_\_ MCF / d    Oil: Initial open flow \_\_\_\_\_ Bbl / d  
Time of open flow between initial and final tests \_\_\_\_\_    Oil: Final open flow \_\_\_\_\_ Bbl / d  
Static rock pressure \_\_\_\_\_ psig ( surface pressure ) after \_\_\_\_\_ Hours

NOTE: ON BACK OF THIS FORM PUT THE FOLLOWING: 1). DETAILS OF PERFORATED INTERVALS, FRACTURING OR STIMULATING, PHYSICAL CHANGE, ETC. 2). THE WELL LOG WHICH IS A SYSTEMATIC DETAILED GEOLOGICAL RECORD OF ALL FORMATIONS, INCLUDING COAL ENCOUNTERED BY THE WELLBORE.

For: KEY OIL COMPANY

By: [Signature]  
Date: July 2, 2002

OCT 18 2002

PRESIDENT

0000 4669

Casing & Tubing Size	Used in Drilling	Left in Well	Cement Fill Up Cu. Ft.
8 5/8"	1105.25'	1105.25'	220 sks To Surface
4 1/2"	5371'	5371'	460 sks

RECEIVED  
Office of Oil & Gas  
Permitting  
SEP 23 2002  
WV Department of  
Environmental Protection

Jackson #1 (47-017 - 4669)  
Four Stage Foam Frac - BJ Services

1<sup>st</sup> Stage: Alexander ( 13 holes ) ( 5253.50' to 5297.75' ) 60 Quality Foam. 500 gal. 15% HCL.  
60,000# 20/40 sand, 550,000 SCF N2,  
816 bbls foam.

2<sup>nd</sup> Stage: Benson ( 7 holes ) ( 4982' to 4983.50' ) 60 Quality Foam. 750 gal 15% HCL.  
Third Riley ( 4 holes ) ( 4882' to 4918' ) 35,000# 20/40 sand, 390,000 SCF N2,  
Second Riley ( 2 holes ) ( 4832.25' & 4832.50' ) 574 bbls foam.

3<sup>rd</sup> Stage: Riley ( 9 holes ) ( 4571.25' to 4600.50' ) 60 Quality Foam. 1,000 gal 15% HCL.  
Balltown ( 6 holes ) ( 4170' to 4330' ) 5,000# 80/100 sand, 25,000# 20/40 sand,  
380,000 SCF N2, 558 bbls foam.

4<sup>th</sup> Stage: Balltown ( 6 holes ) ( 3846' to 3897' ) 60 Quality Foam. 1,000 gal 15% HCL.  
Speechley ( 3 holes ) ( 3579.25' to 3579.75' ) 5,000# 80/100 sand, 45,000# 20/40 sand,  
Warren ( 4 holes ) ( 3438.50' to 3454.75' ) 502,000 SCF N2, 689 bbls foam.

WELL LOG

KB-GL	0	10	
Clay	10	14	
Red Rock	14	25	
Shale & Red Rock	25	44	Damp @ 43'
Red Rock	44	104	
Sand	104	130	
Shale & Red Rock	130	193	
Sand	193	215	
Shale & Red Rock	215	360	
Sand & Shale	360	660	
Sand & Shale	660	2025	
Little Lime	2025	2035	
Big Lime	2035	2103	
Big Injun	2103	2164	
Sand & Shale	2164	2323	
Weir	2323	2464	
Shale	2464	2730	
Gordon	2730	2760	
Shale	2760	3387	
Warren	3387	3462	<u>Gas Checks</u>
Shale	3462	3471	2030' - Odor
Speechley	3471	3594	2251' - Odor
Shale	3594	3802	3419' - Odor
Balltown	3802	4498	3795' - Odor
Shale	4498	4551	4578' - Odor
Riley	4551	4607	5017' - Odor
Shale	4607	4820	5270' - Odor
Second Riley	4820	4835	
Shale	4835	4900	
Third Riley	4900	4940	
Shale	4940	4977	
Benson	4977	4988	
Shale	4988	5221	
Alexander	5221	5310	
Sand & Shale	5310	5481	
T.D.	5481		