

J.E. McCONNELL HEIRS LEASE

114 ACRES ±

WELL NO. 1

WELL NO. 1
STATE PLANE
COORDINATES

(N) 291,873
(E) 1,655,265

CECIL MAIN
82 ACRES ±
(SURFACE)

PHYLLIS SMITH
79.83 ACRES ±
(SURFACE)

FRED W.
ZINN ET AL
40.29 ACRES ±
(SURFACE)

J. E. McCONNELL HEIRS
91 ACRES ±
(SURFACE)

WILLIAM H.
INGRAM, SR ET AL
23 ACRES ±
(SURFACE)

FRED W. ZINN ET AL
48 ACRES ±
(SURFACE)

CHARLES
McCONNELL
3.77 ACRES ±
(SURFACE)

DAVID McCONNELL
0.23 ACRES ±
(SURFACE)

PATTY FORD
48.43 ACRES ±
(SURFACE)

PATTY FORD
7.96 ACRES ±
(SURFACE)

EARNEST COSTILOW
210.48 ACRES ±
(SURFACE)

KRISTY KRAMIR
25.17 ACRES ±
(SURFACE)

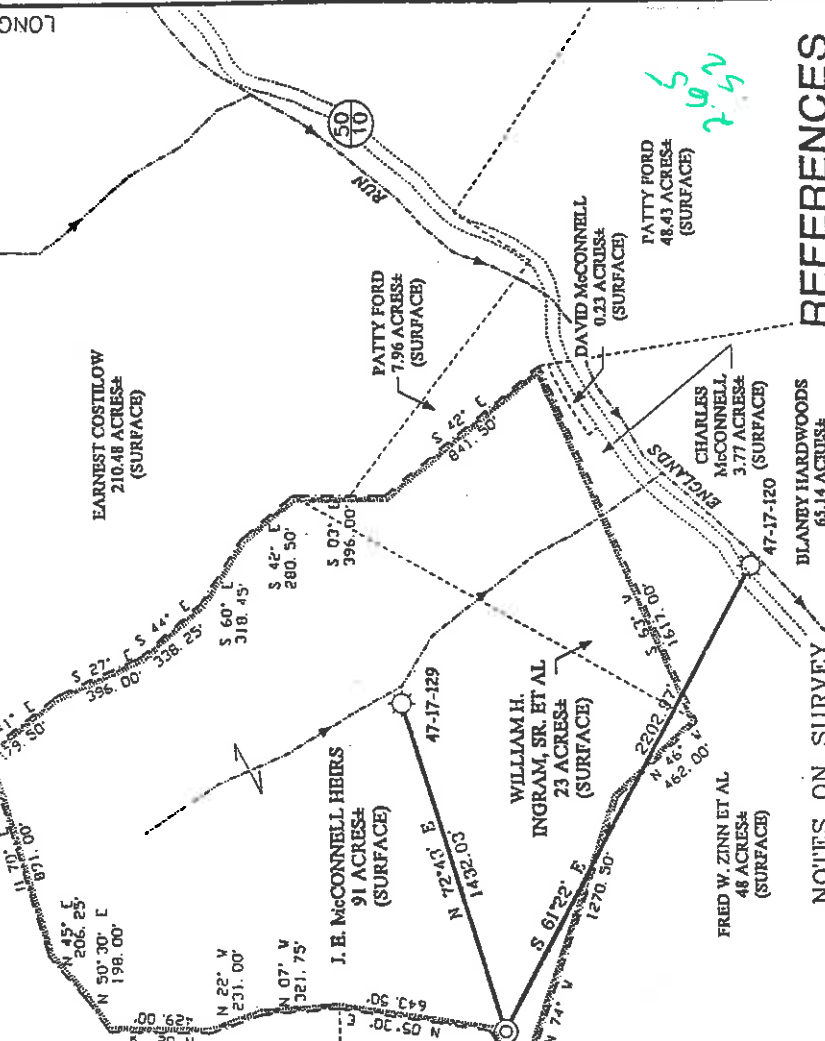
LONG. 80°43'05.2"

LATITUDE 39°20'00"

LONGITUDE 80°42'30"

2.750

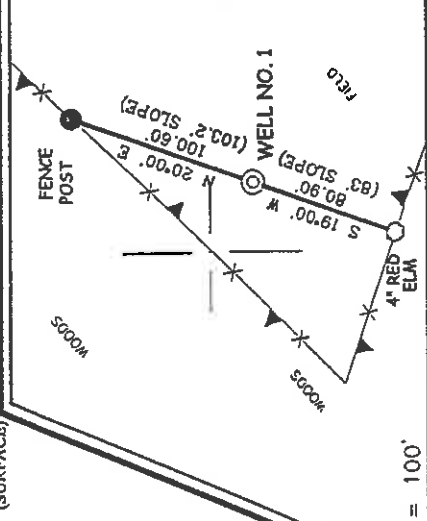
13.980



NOTES ON SURVEY

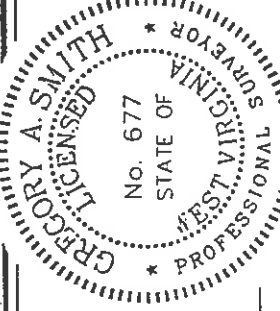
1. TIES TO WELLS AND CORNERS ARE BASED ON STATE PLANE GRID NORTH WV NORTH ZONE NAD '27.
2. TIES TO REFERENCES ARE BASED ON MAGNETIC NORTH 1/31/2002.
3. LEASE BOUNDARY SHOWN; HEREON TAKEN FROM A PLAT DATED MAY 22, 1942 AS PREPARED BY J.M. MARTIN FOR A.P.I. NO. 47-017-0129.
4. SURFACE OWNER AND ADJOINER INFORMATION TAKEN FROM THE ASSESSOR AND COUNTY CLERK RECORDS OF DODDRIDGE COUNTY IN JANUARY, 2002.
5. WELL LAT./LONG. ESTABLISHED BY DGP (SURVEYOR'S MAPPING GRADE).

REFERENCES



I THE UNDERSIGNED, HEREBY CERTIFY THAT THIS PLAT IS CORRECT TO THE BEST OF MY KNOWLEDGE AND BELIEF AND SHOWS ALL THE INFORMATION REQUIRED BY LAW AND THE REGULATIONS ISSUED AND PRESCRIBED BY THE DEPARTMENT OF ENVIRONMENTAL PROTECTION.

P.S. 677 *Gregory A. Smith*



(+) DENOTES LOCATION OF WELL ON UNITED STATES TOPOGRAPHIC MAPS.

DATE FEBRUARY 9, 20 02
OPERATORS WELL NO. J. E. McCONNELL HEIRS NO. 1
API WELL NO. 47-017-04667
STATE COUNTY PERMIT

MINIMUM DEGREE OF ACCURACY 1 / 200 FILE NO. 4962P1(114-54)
PROVEN SOURCE OF ELEVATION TOP OF KNOB 1322' SCALE 1" = 800'



WELL TYPE : OIL GAS INJECTION WASTE LIQUID DISPOSAL "GAS" PRODUCTION STORAGE DEEP SHALLOW

LOCATION : ELEVATION 1244' WATERSHED ENGLANDS RUN
DISTRICT WEST UNION COUNTY DODDRIDGE QUADRANGLE SMITHBURG 7.5'
SURFACE OWNER J. E. McCONNELL HEIRS ACREAGE 91
ROYALTY OWNER J. E. McCONNELL HEIRS LEASE ACREAGE 114
PROPOSED WORK : LEASE NO.
DRILL CONVERT DRILL DEEPER REDRILL FRACTURE OR STIMULATE PLUG OFF OLD
FORMATION PERFORATE NEW FORMATION PLUG AND ABANDON CLEAN OUT AND REPLUG OTHER
PHYSICAL CHANGE IN WELL (SPECIFY) TARGET FORMATION GORDON SAND
ESTIMATED DEPTH 2,900'

WELL OPERATOR KEY OIL COMPANY DESIGNATED AGENT JAN CHAPMAN
ADDRESS 22 GARTON PLAZA WESTON, WV 26452

MAY 3 - 2002

0000 4667