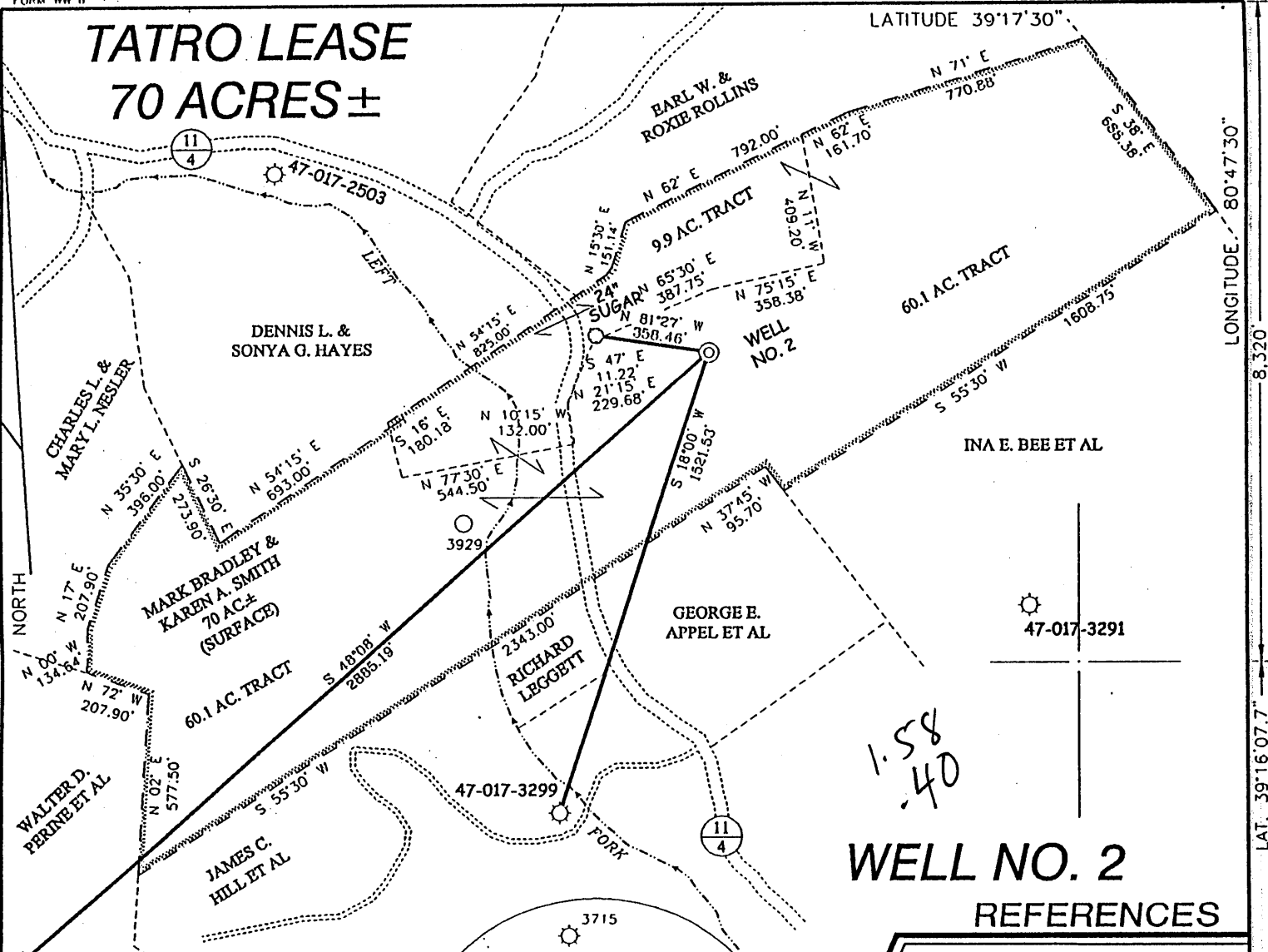
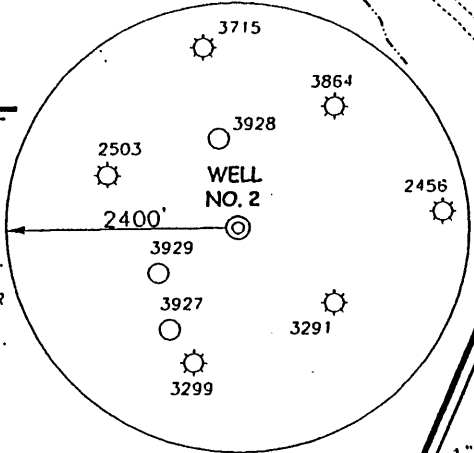
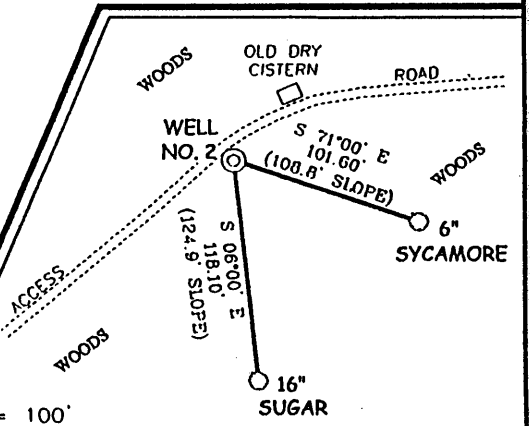


# TATRO LEASE 70 ACRES ±



## WELL NO. 2 REFERENCES



### NOTES ON SURVEY

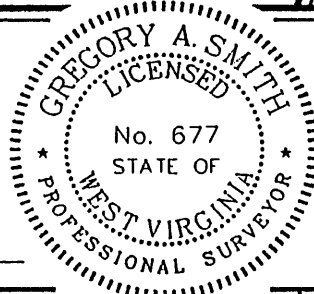
1. TIES TO WELLS AND CORNERS ARE BASED ON STATE PLANE GRID NORTH WV NORTH ZONE NAD '27.
2. TIES TO REFERENCES ARE BASED ON MAGNETIC NORTH 09/20/01.
3. LEASE BOUNDARY SHOWN HEREON TAKEN FROM DEED BOOK 237 PAGE 653.
4. SURFACE OWNER AND ADJOINER INFORMATION TAKEN FROM THE ASSESSOR AND COUNTY CLERK RECORDS OF DODDRIDGE COUNTY IN SEPTEMBER, 2001.
5. WELL LAT./LONG. ESTABLISHED BY DGPS(SUBMETER MAPPING GRADE).



I THE UNDERSIGNED, HEREBY CERTIFY THAT THIS PLAT IS CORRECT TO THE BEST OF MY KNOWLEDGE AND BELIEF AND SHOWS ALL THE INFORMATION REQUIRED BY LAW AND THE REGULATIONS ISSUED AND PRESCRIBED BY THE DIVISION OF ENVIRONMENTAL PROTECTION.

P.S. 677

*Gregory A. Smith*



(+) DENOTES LOCATION OF WELL ON UNITED STATES TOPOGRAPHIC MAPS.

DATE OCTOBER 1, 2001  
 OPERATORS WELL NO. TATRO NO. 2  
 API WELL NO. 47-17-04656  
 STATE COUNTY PERMIT

MINIMUM DEGREE OF ACCURACY 1 / 200 FILE NO. 4879P2 (114-6)  
 PROVEN SOURCE OF ELEVATION JUNCTION OF ROADS ELEVATION 816' SCALE 1" = 500'

STATE OF WEST VIRGINIA  
 DIVISION OF ENVIRONMENTAL PROTECTION  
 OFFICE OF OIL AND GAS



WELL TYPE : OIL  GAS  LIQUID INJECTION  WASTE DISPOSAL  IF "GAS" PRODUCTION  STORAGE  DEEP  SHALLOW   
 LOCATION : ELEVATION 970' WATERSHED LEFT FORK OF ARNOLDS CREEK  
 DISTRICT WEST UNION COUNTY DODDRIDGE QUADRANGLE WEST UNION 7.5'  
 SURFACE OWNER MARK BRADLEY SMITH AND KAREN A. SMITH ACREAGE 60.1 OF 70  
 ROYALTY OWNER W. TATRO HEIRS LEASE ACREAGE 70  
 PROPOSED WORK : LEASE NO. \_\_\_\_\_  
 DRILL  CONVERT  DRILL DEEPER  REDRILL  FRACTURE OR STIMULATE  PLUG OFF OLD FORMATION  PERFORATE NEW FORMATION  PLUG AND ABANDON  CLEAN OUT AND REPLUG  OTHER \_\_\_\_\_  
 PHYSICAL CHANGE IN WELL (SPECIFY) \_\_\_\_\_ TARGET FORMATION ALEXANDER  
 ESTIMATED DEPTH 5600'

WELL OPERATOR KEY OIL COMPANY DESIGNATED AGENT JAN CHAPMAN  
 ADDRESS 22 GARTON PLAZA WESTON, WV 26452 ADDRESS 22 GARTON PLAZA WESTON, WV 26452

MAR 2 2 2002

6-6 133

COUNTY NAME PERMIT 4656

State of West Virginia  
Division of Environmental Protection  
Section of Oil and Gas

Reviewed Aut

Well Operator's Report of Well Work

Farm name: MARK BRADLEY SMITH

Operator Well No. : TATRO #2

LOCATION: Elevation: 970.00

Quadrangle: WEST UNION

District: WEST UNION

County: DODDRIDGE

Latitude: 8,320 Feet South of 39 Deg. 17 Min. 30 Sec.

Longitude: 2,100 Feet West of 80 Deg. 47 Min. 30 Sec.

Company: KEY OIL COMPANY  
22 GARTON PLAZA  
WESTON, WV 26452-0000

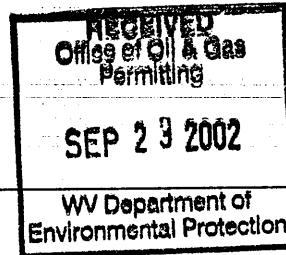
Agent: JAN E. CHAPMAN

Inspector: MIKE UNDERWOOD  
Permit Issued: 03/21/02  
Well Work Commenced: 06/21/02  
Well Work Completed: 07/03/02

Verbal Plugging  
Permission granted on: \_\_\_\_\_  
Rotary X Cable \_\_\_\_\_ Rig  
Total Depth ( feet ) 5268'  
Fresh water depths ( ft ) 225'  
Salt water depths ( ft ) NONE

Is coal being mined in area ( Y / N )? N  
Coal Depths ( ft ): NONE

Casing & Tubing Size	Used in Drilling	Left In Well	Cement Fill Up Cu. Ft.
8 5/8"	973'	973'	210 sks To Surface
4 1/2"	5208'	5208'	475 sks



OPEN FLOW DATA

Warren 3140' - 3214'  
 Speechley 3224' - 3327'  
 Balltown 3528' - 4266'  
 Rileys 4329' - 4745'  
 Benson 4796' - 4805'

Producing formation Alexander Pay zone depth ( ft ) 5036' - 5126'  
 Gas: Initial open flow 146 MCF / d Oil: Initial open flow 0 Bbl / d  
 Final open flow 1,563 MCF / d Oil: Final open flow \_\_\_\_\_ Bbl / d  
 Time of open flow between initial and final tests N/A Hours  
 Static rock pressure 1800 psig ( surface pressure ) after 96 Hours

Second producing formation Commingled Pay zone depth ( ft ) \_\_\_\_\_  
 Gas: Initial open flow \_\_\_\_\_ MCF / d Oil: Initial open flow \_\_\_\_\_ Bbl / d  
 Final open flow \_\_\_\_\_ MCF / d Oil: Final open flow \_\_\_\_\_ Bbl / d  
 Time of open flow between initial and final \_\_\_\_\_ Hours  
 Static rock pressure \_\_\_\_\_ psig ( surface pressure ) after \_\_\_\_\_ Hours

NOTE: ON BACK OF THIS FORM PUT THE FOLLOWING: 1). DETAILS OF PERFORATED INTERVALS, FRACTURING OR STIMULATING, PHYSICAL CHANGE, ETC. 2). THE WELL LOG WHICH IS A SYSTEMATIC DETAILED GEOLOGICAL RECORD OF ALL FORMATIONS, INCLUDING COAL ENCOUNTERED BY THE WELLBORE.

For: KEY OIL COMPANY  
By: [Signature]  
Date: July 8, 2002

007 18 2002  
PRESIDENT

0000 4656

Tatro #2 (47-017 - 4656)  
Four Stage Foam Frac – BJ Services

1 <sup>st</sup> Stage:	Alexander ( 14 holes ) ( 5052.75' to 5117.75' )	60 Quality Foam. 500 gal. 15% HCL. 60,000# 20/40 sand, 550,000 SCF N2, 813 bbls foam.
2 <sup>nd</sup> Stage:	Benson ( 7 holes ) ( 4799.25' to 4800.75' ) Third Riley ( 6 holes ) ( 4734.50' to 4735.75' )	60 Quality Foam. 750 gal 15% HCL. 35,000# 20/40 sand, 390,000 SCF N2, 571 bbls foam.
3 <sup>rd</sup> Stage:	Riley ( 10 holes ) ( 4368' to 4386.25' ) Balltown ( 3 holes ) ( 3971' to 3971.50' )	60 Quality Foam. 1,000 gal 15% HCL. 5,000# 80/100 sand, 25,000# 20/40 sand, 380,000 SCF N2, 555 bbls foam.
4 <sup>th</sup> Stage:	Balltown ( 3 holes ) ( 3677.25' to 3677.75' ) Speechley ( 5 holes ) ( 3234' to 3315.25' ) Warren ( 7 holes ) ( 3187.25' to 3187.50' )	60 Quality Foam. 1,000 gal 15% HCL. 5,000# 80/100 sand, 45,000# 20/40 sand, 502,000 SCF N2, 690 bbls foam.

WELL LOG

KB-GL	0	10	
Clay	10	15	
Sand	15	22	
Sand & Shale & Red Rock	22	68	
Shale & Sand	68	226	
Red Rock & Shale & Sand	226	467	Damp @ 225'
Sand	467	490	
Sand & Shale	490	624	
Sand & Shale & Red Rock	624	889	
Sand & Shale	889	1720	Oil odor @ 1371'
Little Lime	1720	1782	
Big Lime	1782	1847	
Big Injun	1847	1933	
Sand & Shale	1933	2085	
Weir	2085	2197	
Shale	2197	2481	
Gordon	2481	2548	
Shale	2548	3140	
Warren	3140	3214	<u>Gas Checks</u>
Shale	3214	3224	1871' - Odor
Speechley	3224	3327	2121' - Odor
Shale	3227	3528	2493' - 32/10 <sup>ths</sup> - 7" w/ Hg
Balltown	3528	4266	2595' - 72/10 <sup>ths</sup> - 2" w/ H <sup>2</sup> O
Shale	4266	4329	2817' - 48/10 <sup>ths</sup> - 2" w/ H <sup>2</sup> O
Riley	4329	4390	3132' - 20/10 <sup>ths</sup> - 2" w/ H <sup>2</sup> O
Shale	4390	4705	3248' - 16/10 <sup>ths</sup> - 2" w/ H <sup>2</sup> O
Third Riley	4705	4745	3666' - 16/10 <sup>ths</sup> - 2" w/ H <sup>2</sup> O
Shale	4745	4796	4453' - 12/10 <sup>ths</sup> - 2" w/ H <sup>2</sup> O
Benson	4796	4805	4953' - 12/10 <sup>ths</sup> - 2" w/ H <sup>2</sup> O
Shale	4805	5036	5111' - 12/10 <sup>ths</sup> - 2" w/ H <sup>2</sup> O
Alexander	5036	5126	
Sand & Shale	5126	5268	
T.D.	5268		