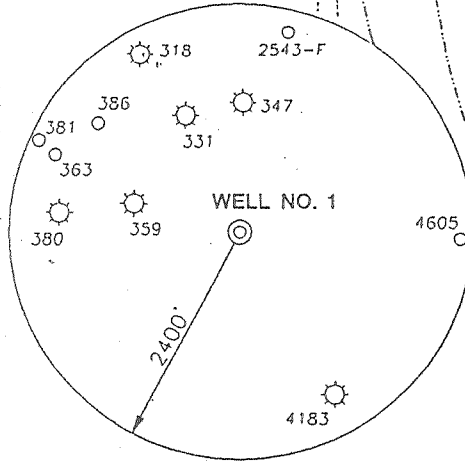
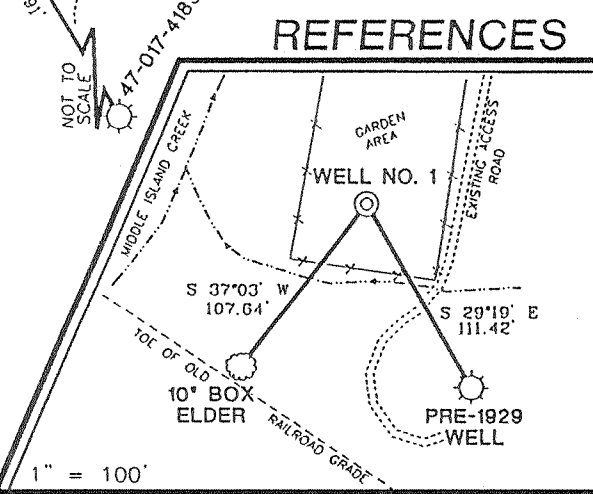


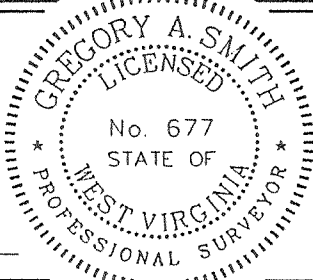
**NOTES ON SURVEY**

1. TIES TO WELLS ARE BASED ON STATE PLANE GRID NORTH WV. NORTH ZONE NAD '27.
2. TIES TO REFERENCES ARE BASED ON MAGNETIC NORTH 07/13/01.
3. LEASE BOUNDARY SHOWN HEREON IS APPROXIMATE AND WAS OBTAINED FROM RAILROAD RIGHT-OF-WAY PLANS DATED 03/30/83 AND FROM RIGHT-OF-WAY PLANS FOR THE NORTHWESTERN TURNPIKE WV PROJECT NO. 2110. LEASE DESCRIPTION IS GENERAL WITH NO METES AND BOUNDS. DUE TO THE VAGUE DESCRIPTION OF THE LEASE TRACT AND THE ADJOINING TRACTS AN AFFIDAVIT OF OWNERSHIP IS RECOMMENDED.
4. SURFACE OWNER AND ADJOINER INFORMATION TAKEN FROM THE ASSESSOR AND COUNTY CLERK RECORDS OF DODDRIDGE COUNTY IN JULY, 2001.
5. WELL LAT./LONG. ESTABLISHED BY DGPS(SUBMETER MAPPING GRADE).



I THE UNDERSIGNED, HEREBY CERTIFY THAT THIS PLAT IS CORRECT TO THE BEST OF MY KNOWLEDGE AND BELIEF AND SHOWS ALL THE INFORMATION REQUIRED BY LAW AND THE REGULATIONS ISSUED AND PRESCRIBED BY THE DEPARTMENT OF ENVIRONMENTAL PROTECTION.

P.S. 677 *Gregory A. Smith*



(+) DENOTES LOCATION OF WELL ON UNITED STATES TOPOGRAPHIC MAPS.

DATE JULY 16, 2001

OPERATORS WELL NO. 1

API WELL NO. 47-17-04625

STATE 47 COUNTY 17 PERMIT 04625

MINIMUM DEGREE OF ACCURACY 1 / 200 FILE NO. 4784P1 (108-25.26)

PROVEN SOURCE OF ELEVATION BENCH MARK ELEVATION 805' SCALE 1" = 200'

STATE OF WEST VIRGINIA  
 DIVISION OF ENVIRONMENTAL PROTECTION  
 OFFICE OF OIL AND GAS

WELL TYPE : OIL  GAS  LIQUID INJECTION  WASTE DISPOSAL  IF "GAS" PRODUCTION  STORAGE  DEEP  SHALLOW

LOCATION : ELEVATION 782' WATERSHED MIDDLE ISLAND CREEK

DISTRICT WEST UNION COUNTY DODDRIDGE QUADRANGLE WEST UNION 7.5'

SURFACE OWNER FRANK HOLTZ ACREAGE 2

ROYALTY OWNER FRANK HOLTZ ET AL LEASE ACREAGE 2

PROPOSED WORK : LEASE NO. \_\_\_\_\_

DRILL  CONVERT  DRILL DEEPER  REDRILL  FRACTURE OR STIMULATE  PLUG OFF OLD FORMATION  PERFORATE NEW FORMATION  PLUG AND ABANDON  CLEAN OUT AND REPLUG  OTHER

PHYSICAL CHANGE IN WELL (SPECIFY) \_\_\_\_\_ TARGET FORMATION ALEXANDER

ESTIMATED DEPTH 5600'

WELL OPERATOR KEY OIL COMPANY DESIGNATED AGENT JAN CHAPMAN

ADDRESS 22 GARTON PLAZA WESTON, WV 26452 ADDRESS 22 GARTON PLAZA WESTON, WV 26452

COUNTY NAME DODD PERMIT 4625

State of West Virginia  
Division of Environmental Protection  
Section of Oil and Gas

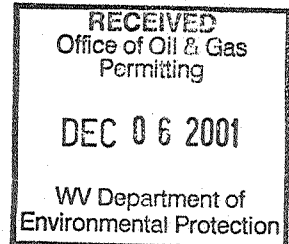
Reviewed \_\_\_\_\_

Well Operators Report of Well Work

Farm name: Holtz Operator Well #: Melissa Bee #1  
Location: Elevation: 782' Quadrangle: West Union 7.5'  
District: West Union County Doddridge  
Latitude 100 feet south of 39 Deg. 17 Min. 30 Sec.  
Longitude 5,950 feet west of 80 Deg. 45 Min. 00 Sec.

Company: Key Oil Company  
22 Garton Plaza  
Weston, WV 26452

Agent: Jan Chapman Casing Used in Left in Cement  
Drilling Well Fill up  
Inspector: Mike Underwood  
Permit Issued: 08-14-01 11 3/4 150 132 60 sks  
Well Work Commenced: 09-29-01  
Well Work Completed: 10-04-01 8 5/8 896 792 160 sks  
Verbal Plugging  
Permission granted on: 4 1/2 5117 5057 600 sks  
Rotary \_\_\_\_\_ Cable \_\_\_\_\_ Rig  
Total Depth (ft) 5117'  
Fresh water depth (ft) 740'  
Salt water depth (ft) N/A  
Is coal being mined in are (Y/N) N  
Coal depths (ft) N/A



OPEN FLOW DATA

Producing formation Alexander Pay zone depths (ft) 4903-4978  
Gas: Initial open flow 60 mcf/d Oil: Initial open flow bbls/day  
Final open flow 1571 mcf/d Final open flow bbls/day  
Time of open flow between initial and final tests 48 Hours  
Static rock pressure 1975# psig (surface pressure) after 48 Hours

Other producing formation Benson/Warren Pay zone depths (ft) 3000-4846  
Gas: Initial open flow \* mcf/day Oil: Initial open flow bbls/day  
Final open flow \* mcf/day Final open flow bbls/day  
Time of open flow between initial and final tests 48 Hours  
Static rock pressure psig (surface pressure) after 48 Hours  
\* = commingled zones

For: Key Oil Company

By: *[Signature]*  
Date: 11-01-01

DEC 07 2001

D000 4625

API # 47-017-04625  
 Melissa Bee #1

Stage #1	perfs	sand	
Alexander	4903-4976	600 sks	60 quality foam
Stage #2			
Benson	4646-4649	350 sks	60 quality foam
Stage #3			
Riley	4197-4226	300 sks	60 quality foam
Stage #4			
Warren/Speechley	3000-3143	500 sks	60 quality foam

Drillers Log

Electric Log Tops

Clay	0	10	
Sd/Sh	10	284	H2O @ 251'
Sand	284	300	
Sd/Sh	300	540	
Sand	540	545	
Shale	545	1560	
L. Lime	1560	1595	
B. Lime	1595	1720	
Injun	1720	1780	
Sd/Sh	1780	2995	gas ck @ 2016 = odor
Warren	2995	3035	
Sd/Sh	3035	3380	gas ck @ 3318 = odor
Balltown	3380	3460	
Sd/Sh	3460	4190	
Riley	4190	4245	
Sd/Sh	4245	4635	gas ck @ 4612 = 60 mcfs
Benson	4635	4645	
Sd/Sh	4645	4920	gas ck @ 4800 = 60 mcfs
Alexander	4280	4950	
Sd/Sh	4950	5112	
TD	5112		