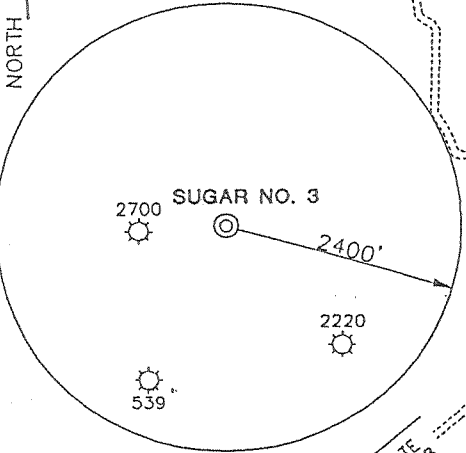
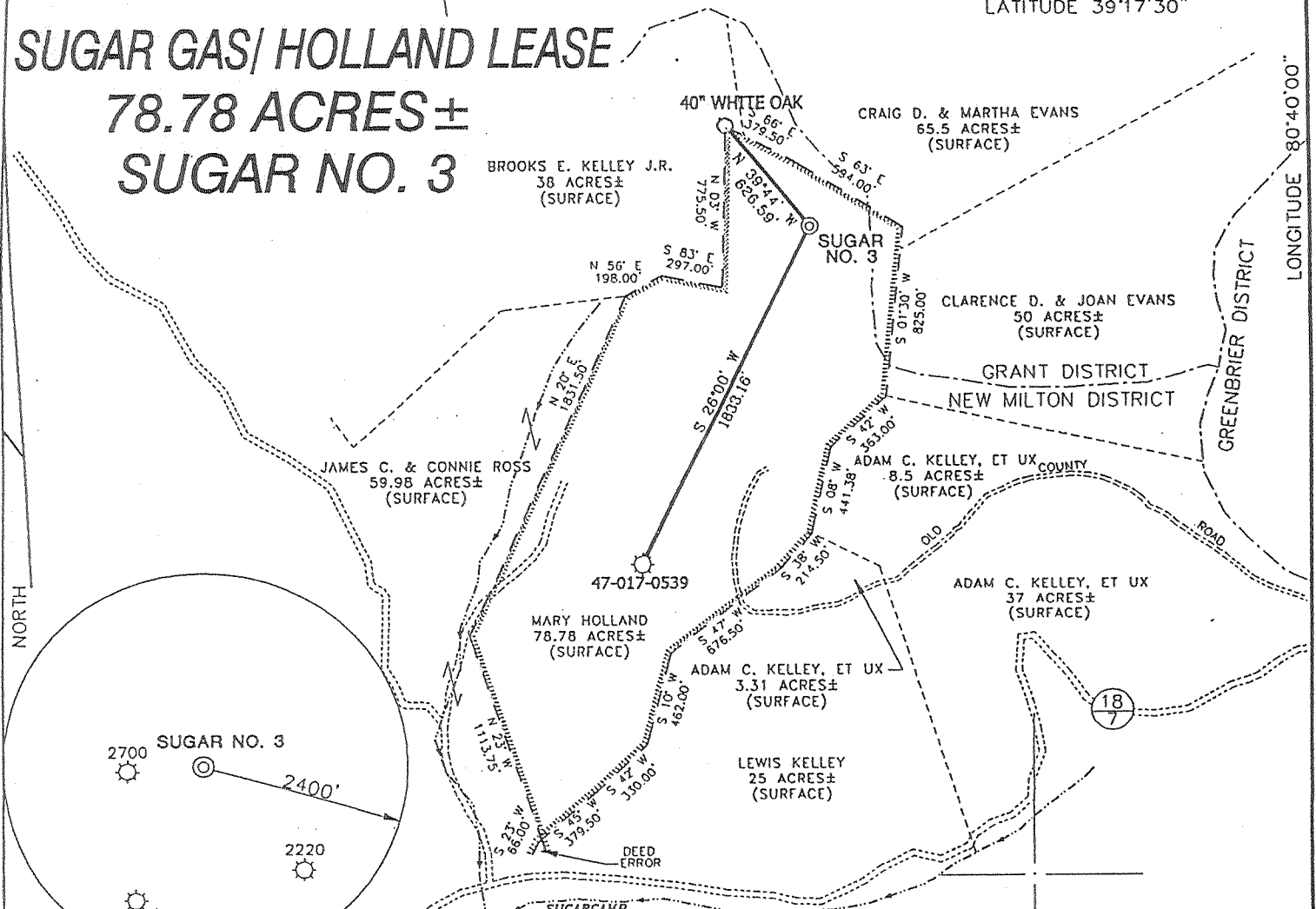


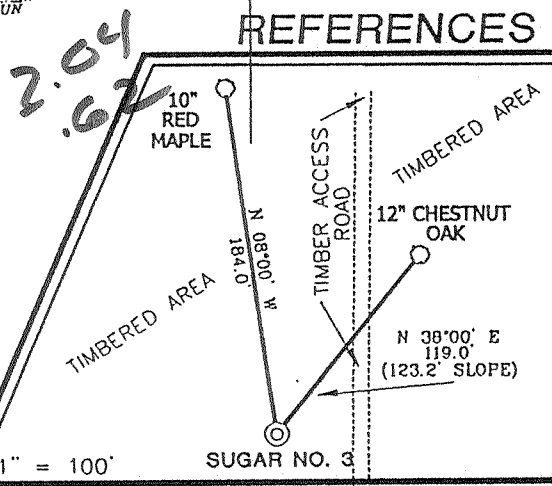
SUGAR GAS/ HOLLAND LEASE

78.78 ACRES± SUGAR NO. 3



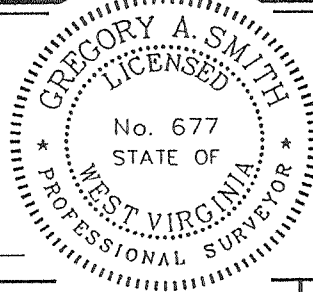
NOTES ON SURVEY

1. TIES TO WELLS AND CORNERS ARE BASED ON STATE PLANE GRID NORTH WV NORTH ZONE NAD '27.
2. TIES TO REFERENCES ARE BASED ON MAGNETIC NORTH 10-23-2000.
3. LEASE BOUNDARY SHOWN HEREON TAKEN FROM DODDRIDGE COUNTY DEED BOOK 90 ON PAGE 201.
4. SURFACE OWNER AND ADJOINER INFORMATION TAKEN FROM THE ASSESSOR AND COUNTY CLERK RECORDS OF DODDRIDGE COUNTY IN OCTOBER, 2000.
5. WELL LAT./LONG. ESTABLISHED BY DGPS (SUBMETER MAPPING GRADE).



I THE UNDERSIGNED, HEREBY CERTIFY THAT THIS PLAT IS CORRECT TO THE BEST OF MY KNOWLEDGE AND BELIEF AND SHOWS ALL THE INFORMATION REQUIRED BY LAW AND THE REGULATIONS ISSUED AND PRESCRIBED BY THE DEPARTMENT OF ENERGY.

P.S. 677 Gregory A. Smith



(+) DENOTES LOCATION OF WELL ON UNITED STATES TOPOGRAPHIC MAPS.
 DATE NOVEMBER 6, 2000
 OPERATORS WELL NO. SUGAR NO. 3
 API WELL NO. 47-17-04624
 STATE COUNTY PERMIT

MINIMUM DEGREE OF ACCURACY 1 / 200 FILE NO. 4502P3 (87-46)
 PROVEN SOURCE OF ELEVATION BENCH MARK ELEVATION 1155' SCALE 1"=800'

STATE OF WEST VIRGINIA
 DIVISION OF ENVIRONMENTAL PROTECTION
 OFFICE OF OIL AND GAS

WELL TYPE : OIL GAS LIQUID INJECTION WASTE DISPOSAL IF "GAS" PRODUCTION STORAGE DEEP SHALLOW

LOCATION :
 ELEVATION 1274' WATERSHED TRIBUTARY OF SUGARCAMP RUN OF MEATHOUSE FORK
 DISTRICT NEW MILTON COUNTY DODDRIDGE QUADRANGLE SMITHBURG 7.5'

SURFACE OWNER MARY HOLLAND ACREAGE 78.78±
 ROYALTY OWNER MARY HOLLAND 1/2 INT. & BASSELL L. & CHARLES L. MAXWELL LEASE ACREAGE 78.78±
 PROPOSED WORK : LEASE NO. _____
 DRILL CONVERT DRILL DEEPER REDRILL FRACTURE OR STIMULATE PLUG OFF OLD FORMATION PERFORATE NEW FORMATION PLUG AND ABANDON CLEAN OUT AND REPLUG OTHER _____
 PHYSICAL CHANGE IN WELL (SPECIFY) _____ TARGET FORMATION ALEXANDER
 ESTIMATED DEPTH 5600'

WELL OPERATOR ANJA d.b.a./ FAITH OIL AND GAS DESIGNATED AGENT JOHN REMINGER
 ADDRESS RT. 3 BOX 238C PHILLIPPI, WV 26416 ADDRESS P.O. BOX 20 SALEM, WV 26426

COUNTY NAME DODD
 PERMIT 4604

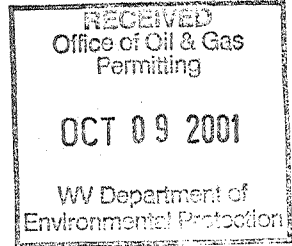
66 99

State of West Virginia
Division of Environmental Protection
Section of Oil and Gas

Reviewed AED

Well Operators Report of Well Work

Farm name: Holland Operator Well #: Sugar #3
Location: Elevation: 1,274 Quadrangle: Smithburg 7.5'
District: New Milton County Doddridge
Latitude 10,790 feet south of 39 Deg. 17 Min. 30 Sec.
Longitude 3,290 feet west of 80 Deg. 40 Min. 00 Sec.



Company: ANJA d.b.a. Faith Oil And Gas
Rt.3 Box 238c
Philippi, WV 26416

Agent: John Reminger Casing Used in Drilling Left in Well Cement Fill up

Inspector: Mike Underwood
Permit Issued: 08-02-01
Well Work Commenced: 08-27-01
Well Work Completed: 09-01-01 6 5/8 1325 1279 160 sks
Verbal Plugging
Permission granted on: 4 1/2 3376 3308 250 sks
Rotary ___ Cable ___ Rig
Total Depth (ft) 3376'
Fresh water depth (ft) N/A
Salt water depth (ft) 1501
Is coal being mined in are (Y/N) N
Coal depths (ft) N/A

OPEN FLOW DATA

Producing formation Warren Pay zone depths (ft) 3128-3177
Gas: Initial open flow show mcf/d Oil: Initial open flow bbls/day
Final open flow 250 mcf/d Final open flow bbls/day
Time of open flow between initial and final tests 48 Hours
Static rock pressure 450# psig (surface pressure) after 48 Hours

Other producing formation Big Injun Pay zone depths (ft) 2221-2244
Gas: Initial open flow * mcf/day Oil Initial open flow bbls/day
Final open flow * mcf/day Final open flow bblss/day
Time of open flow between initial and final tests 48 Hours
Static rock pressure psig (surface pressure) after 48 Hours
* = commingled zones

For: Anja Resources Inc.

By: J. J. Graham
Date: 10-01-01

OCT 19 2001

0000 4624

Sugar #3

Stage #1	perfs	sand	avg rate	isip
Warren	3128-3175	200 sks	20 bpm	1766#
Weir	2410-2472	200 sks	20 bpm	2000#
Stage #2				
Big Injun	2222-2242	300 sks	20 bpm	1864#

Drillers Log

Sh	0	22
Sd/Sh	22	375
Sd	375	400
Sd/Sh	400	530
RR	530	540
Sd/Sh	540	1900
Slate	1900	2000
Sd/Sh	2000	2130
BL	2130	2230
Sd	2230	2290
Sd/Sh	2290	2410
Sd	2410	2525
Sd/Sh	2525	2657
Sd	2637	2647
Sd/Sh	2647	2940
Sd	2940	3080
Sd/Sh	3080	3376
Td	3376	

Electric Log Tops

Big Lime	2108
Berea	2622
Gordon	2830