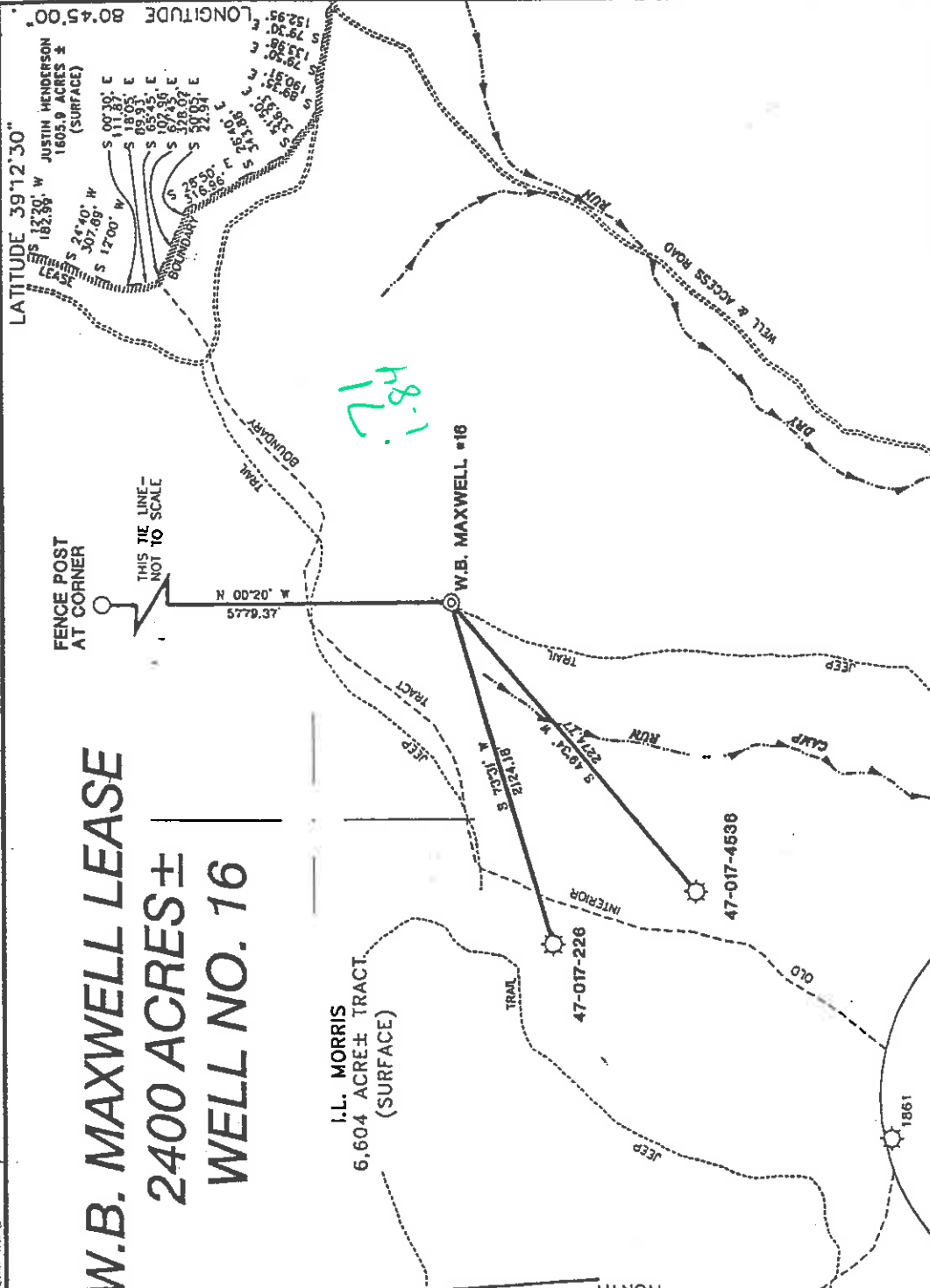


# W.B. MAXWELL LEASE 2400 ACRES ± WELL NO. 16

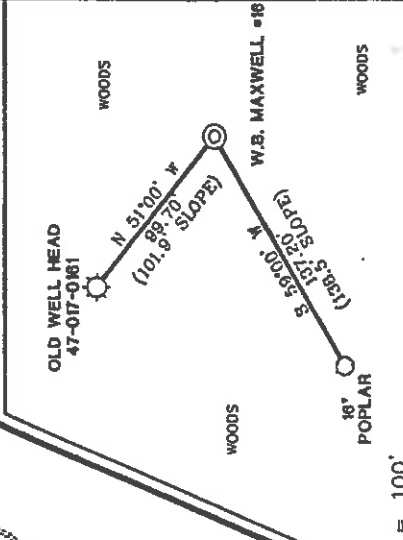
I.L. MORRIS  
6,604 ACRE ± TRACT  
(SURFACE)



### NOTES ON SURVEY

1. TIES TO WELLS AND CORNERS ARE BASED ON STATE PLANE GRID NORTH WV NORTH ZONE NAD '27.
2. TIES TO REFERENCES ARE BASED ON MAGNETIC NORTH 10/23/00.
3. LEASE BOUNDARY SHOWN HEREON TAKEN FROM DODDRIDGE COUNTY DEED BOOK 28 ON PAGE 10.
4. SURFACE OWNER AND ADJOINER INFORMATION TAKEN FROM THE ASSESSOR AND COUNTY CLERK RECORDS OF DODDRIDGE COUNTY IN WHAT JANUARY, 1999.
5. WELL LAT./LONG. ESTABLISHED BY DGPS(SUBMETER MAPPING GRADE).

### REFERENCES



I, THE UNDERSIGNED, HEREBY CERTIFY THAT THIS PLAT IS CORRECT TO THE BEST OF MY KNOWLEDGE AND BELIEF AND SHOWS ALL THE INFORMATION REQUIRED BY LAW AND THE REGULATIONS ISSUED AND PRESCRIBED BY THE DEPARTMENT OF ENERGY.

P.S. *Gregory A. Smith*  
677

MINIMUM DEGREE OF ACCURACY 1 / 200 FILE NO. 4152P16(92-32)  
PROVEN SOURCE OF ELEVATION TOP OF KNOB 1421' SCALE 1" = 1000'

WELL TYPE : OIL  GAS  INJECTION  WASTE DISPOSAL  IF "GAS" PRODUCTION  STORAGE  DEEP  SHALLOW

LOCATION : ELEVATION 1157' WATERSHED CAMP RUN OF SOUTH FORK HUGHES RIVER

DISTRICT SOUTHWEST COUNTY DODDRIDGE QUADRANGLE OXFORD 7.5'

SURFACE OWNER I.L. MORRIS ACREAGE 6,603.75

ROYALTY OWNER W.B. MAXWELL HEIRS ET AL LEASE ACREAGE 2400

PROPOSED WORK :  
 DRILL  CONVERT  DRILL DEEPER  REDRILL  FRACTURE OR STIMULATE  X PLUG OFF OLD FORMATION  PERFORATE NEW FORMATION  PLUG AND ABANDON  CLEAN OUT AND REPLUG  OTHER  PHYSICAL CHANGE IN WELL (SPECIFY) ALEXANDER

DESIGNATED AGENT JAN CHAPMAN ESTIMATED DEPTH 5600'

WELL OPERATOR KEY OIL COMPANY ADDRESS 22 GARTON PLAZA WESTON, WV 26452

PERMIT 4582 COUNTY NAME DODD ADDRESS 22 GARTON PLAZA WESTON, WV 26452

6-6 133

MAY 4 2001

State of West Virginia  
Division of Environmental Protection  
Section of Oil and Gas

12-13

Well Operators Report of Well Work

Farm name: I.L. Morris Operator Well #: W.B. Maxwell #16

Location: Elevation: 1157' Quadrangle: Oxford 7.5'

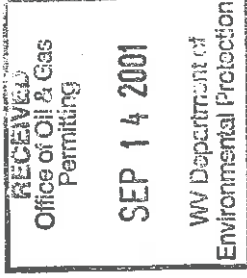
District: Southwest County Doddridge  
Latitude 3760 feet south of 39 Deg. 12 Min. 30 Sec.  
Longitude 9720 feet west of 80 Deg. 45 Min. 00 Sec.

Company: Key Oil Company  
22 Garton Plaza  
Weston, WV 26452

Agent: Jan Chapman Casing Used in Left in Cement  
Drilling Well Fill up

Inspector: Mike Underwood  
Permit Issued: 05-3-01 11 3/4 138 132 65 sks  
Well Work Commenced: 06-23-01 8 5/8 1580 1527 340 sks  
Well Work Completed: 06-27-01 4 1/2 5275 5201 480 sks

Verbal Plugging  
Permission granted on:  
Rotary Cable Rig  
Total Depth (ft) 5275'  
Fresh water depth (ft) N/A  
Salt water depth (ft) N/A  
Is coal being mined in are (Y/N) N  
Coal depths (ft) N/A



OPEN FLOW DATA

Producing formaton Alexander Pay zone depths (ft) 4914-5095  
Gas: Initial open flow show mcf/d Oil: Initial open flow bbls/day  
Final open flow 1540 mcf/d Final open flow bbls/day  
Time of open flow between initial and final tests 48 Hours  
Static rock pressure 1650 psig (surface pressure) after 48 Hours

Other producing formation Benson/Warren Pay zone depths (ft) 4572-4751  
Gas: Initial open flow \* mcf/day Oil Initial open flow bbls/day  
Final open flow \* mcf/day Final open flow bbls/day  
Time of open flow between initial and final tests 48 Hours  
Static rock pressure \* psig (surface pressure) after 48 Hours

\* = Commingled zones

For: Key Oil Company  
By: *[Signature]*

Date: 09-01-01

D000 4582

SEP 21 2001

API # 47-017-04582  
Maxwell #16

Stage #1 Alexander	perts 4914-5095	sand 600 sks	60 quality foam
Stage #2 Benson/Riley	4572-4752	400 sks	60 quality foam
Stage #3 Riley	4326-4338	500 sks	60 quality foam
Stage #4 Speckley/Warren	3143-32560	500 sks	60 quality foam

Drillers Log

Electric Log Tops

Sh	0	3190	gas ck @ 2017 = 2/10 2" - w/w
Warren	3190	3246	
Sd/Sh	3246	3496	
Balltown	3496	3535	gas ck @ 3506 = 2/10 2" -w/w
Sd/Sh	3535	4350	
Riley	4350	4380	
Sd/Sh	4380	4760	
Benson	4760	4767	
Sd/Sh	4767	5050	gas ck @ 5027 = 2/10 2" w/w
Alexander	5050	5700	
Sd/Sh	5700	5275	
TD	5275		