

LONG. 80°46'43.8"

8190'

LATITUDE 39°12'30"

# W.B. MAXWELL LEASE 2400 ACRES ± WELL NO. 15

I.L. MORRIS  
6,604 ACRE ± TRACT  
(SURFACE)

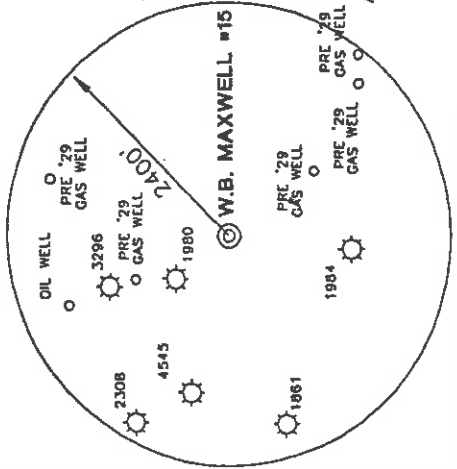
HAESSLY HARDWOOD  
LUMBER COMPANY  
615 ACRES ±  
(SURFACE)

JUSTIN HENDERSON  
1605.9 ACRES ±  
(SURFACE)

W.B. MAXWELL #16

47-017-1861

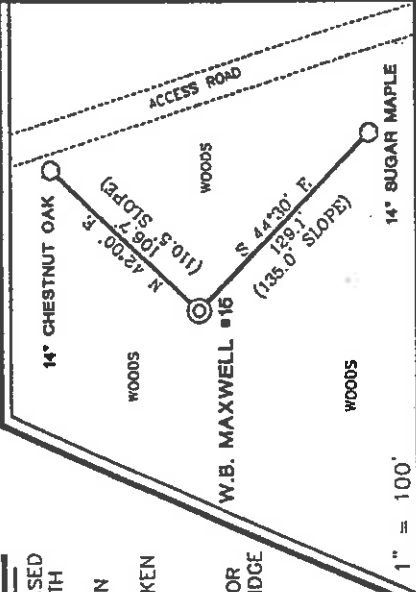
47-017-1868



### NOTES ON SURVEY

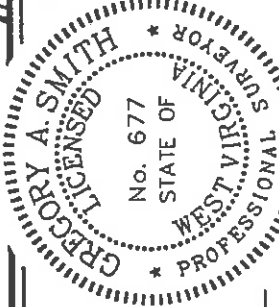
1. TIES TO WELLS AND CORNERS ARE BASED ON STATE PLANE GRID NORTH WV NORTH ZONE NAD '27.
2. TIES TO REFERENCES ARE BASED ON MAGNETIC NORTH 10/23/00.
3. IF ASE BOUNDARY SHOWN HEREON TAKEN FROM DODDRIDGE COUNTY DEED BOOK 28 ON PAGE 10.
4. SURFACE OWNER AND ADJOINER INFORMATION TAKEN FROM THE ASSESSOR AND COUNTY CLERK RECORDS OF DODDRIDGE COUNTY IN WHAT JANUARY, 1999.
5. WELL LAT./LONG. ESTABLISHED BY DGPS(SUBMETER MAPPING GRADE).

### REFERENCES



I THE UNDERSIGNED, HEREBY CERTIFY THAT THIS PLAT IS CORRECT TO THE BEST OF MY KNOWLEDGE AND BELIEF AND SHOWS ALL THE INFORMATION REQUIRED BY LAW AND THE REGULATIONS ISSUED AND PRESCRIBED BY THE DEPARTMENT OF ENERGY.

P.S. 677 *Gregory A. Smith*



(+) DENOTES LOCATION OF WELL ON UNITED STATES TOPOGRAPHIC MAPS.

DATE OCTOBER 26 OPERATORS WELL NO. W.B. MAXWELL #15

API WELL NO. 47-017 COUNTY PERMIT STATE 04581

MINIMUM DEGREE OF ACCURACY 1/200 FILE NO. 4152P15(92-31)

PROVEN SOURCE OF ELEVATION TOP OF KNOB 1421' SCALE 1" = 1000'

WELL TYPE : OIL  GAS  LIQUID WASTE  INJECTION  DISPOSAL  "GAS" PRODUCTION  STORAGE  DEEP  SHALLOW

LOCATION : ELEVATION 1192' WATERSHED BIG RUN OF SOUTH FORK HUGHES RIVER

DISTRICT SOUTHWEST COUNTY DODDRIDGE QUADRANGLE OXFORD 7.5'

SURFACE OWNER I.L. MORRIS ACREAGE 6,603.75

ROYALTY OWNER W.B. MAXWELL HEIRS ET AL LEASE ACREAGE 2400

PROPOSED WORK : LEASE NO. \_\_\_\_\_

DRILL  CONVERT  DRILL DEEPER  REDRILL  FRACTURE OR STIMULATE  PLUG OFF OLD

FORMATION  PERFORATE NEW FORMATION  PLUG AND ABANDON  CLEAN OUT AND REPLUG  OTHER \_\_\_\_\_

PHYSICAL CHANGE IN WELL (SPECIFY) \_\_\_\_\_ TARGET FORMATION ALEXANDER

ESTIMATED DEPTH 5600'

WELL OPERATOR KEY OIL COMPANY

DESIGNATED AGENT JAN CHAPMAN

ADDRESS 22 GARTON PLAZA WESTON, WV 26452

ADDRESS 22 GARTON PLAZA WESTON, WV 26452



STATE OF WEST VIRGINIA  
DIVISION OF ENVIRONMENTAL PROTECTION  
OFFICE OF OIL AND GAS

COUNTY NAME

PERMIT

0000 4581

6-6-133

State of West Virginia  
Division of Environmental Protection  
Section of Oil and Gas

Reviewed *AKB*

Well Operators Report of Well Work

Farm name: I.L. Morris Operator Well #: W.B. Maxwell #15

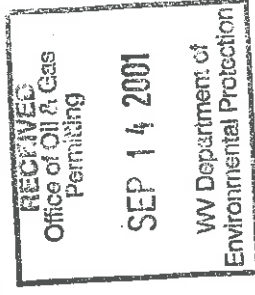
Location: Elevation: 1192' Quadrangle: Oxford 7.5'

District: Southwest County Doddridge  
Latitude 250 feet south of 39 Deg. 12 Min. 30 Sec.  
Longitude 8190 feet west of 80 Deg. 45 Min. 00 Sec.

Company: Key Oil Company  
22 Garton Plaza  
Weston, WV 26452

Agent: Jan Chapman Casing Used in Left in Cement  
Drilling Well Fill up

Inspector: Mike Underwood  
Permit Issued: 05-3-01 11 3/4  
Well Work Commenced: 06-18-01 8 5/8 1266 1203 270 sks  
Well Work Completed: 06-22-01 4 1/2 5249 5203 480 sks  
Verbal Plugging  
Permission granted on:



Rotary Cable \_\_\_\_\_ Rig  
Total Depth (ft) 5280'  
Fresh water depth (ft) 79'  
Salt water depth (ft) 1674'  
Is coal being mined in are (Y/N) N  
Coal depths (ft) N/A

OPEN FLOW DATA

Producing formation	Alexander	Pay zone depths (ft)	5019-5095
Gas: Initial open flow	show mcf/d	Initial open flow	bbls/day
Final open flow	1640 mcf/d	Final open flow	bbls/day
Time of open flow between initial and final tests		Hours	Hours
Static rock pressure	1650 psig (surface pressure)	after	
Other producing formation	Benson/Warren	Pay zone depths (ft)	3133-4751
Gas: Initial open flow	* mcf/day	Initial open flow	bbls/day
Final open flow	* mcf/day	Final open flow	bbls/day
Time of open flow between initial and final tests		Hours	Hours
Static rock pressure	* psig (surface pressure)	after	

\* = Commingled zones

For: Key Oil Company  
By: *[Signature]*

Date: 09-01-01

D000 4581

SEP 21 2001

API # 47-017-04581  
Maxwell #15

Stage #1 Alexander	perts 5019-5094	sand 600 sks	60 quality foam
Stage #2 Benson/Riley	4663-4751	400 sks	60 quality foam
Stage #3 Riley	4084-4321	500 sks	60 quality foam
Stage #4 Speechley/Warren	3133-3245	500 sks	60 quality foam

Drillers Log

Sh	0	10	
Sd	10	14	water @ 79' 1/2"
Sand	14	28	
Sd/Sh	28	497	
Shale	497	546	
Sh	546	604	
Sd/Sh	604	723	
Sand	723	760	
Sd/Sh	760	807	
Shale	807	853	
Sd/Sh	853	1040	
Sand	1040	1095	
Sd/Sh	1095	1233	
Sand	1233	1276	
Sd/Sh	1276	1723	
L. Lime	1723	1761	
B. Lime	1761	1865	
Injun	1865	1913	
Sd/Sh	1913	3181	
Warren	3181	3246	
Sd/Sh	3246	3910	
Baltown	3910	4010	
Sd/Sh	4010	4330	
Riley	4330	4360	
Sd/Sh	4360	4750	
Benson	4750	4764	
Sd/Sh	4764	5037	
Alexander	5037	5130	
Sd/Sh	5130	5280	
TD	5280		

Electric Log Tops