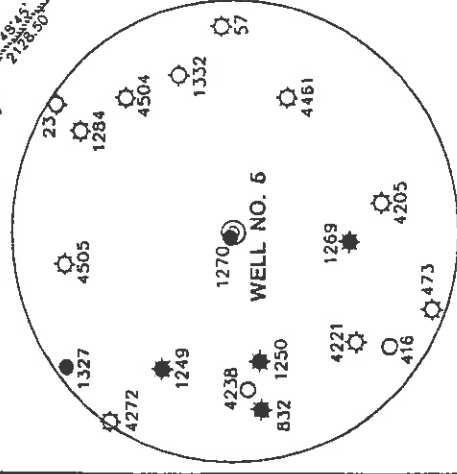
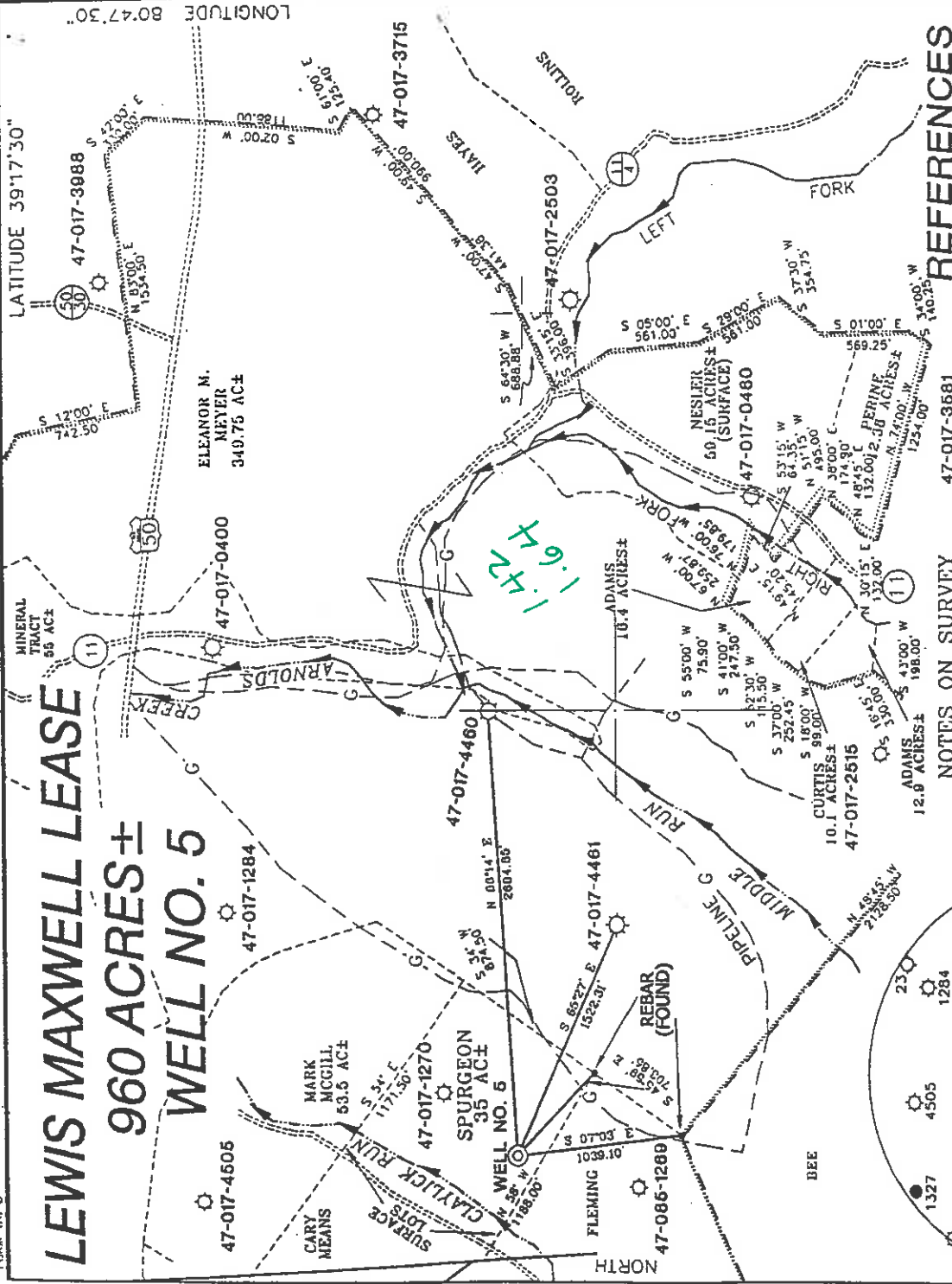


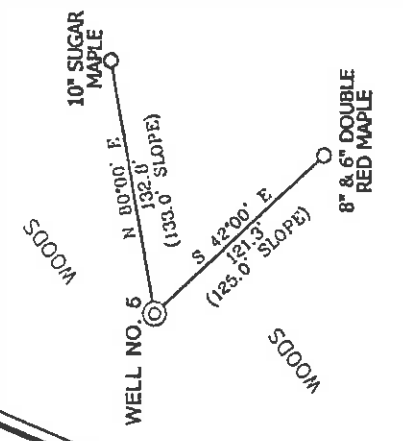
# LEWIS MAXWELL LEASE 960 ACRES ± WELL NO. 5



### NOTES ON SURVEY 47-017-3681

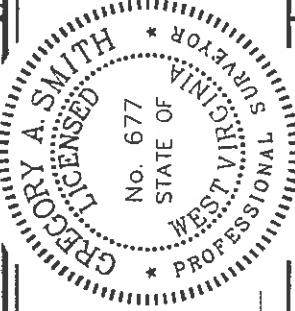
1. TIES TO WELLS AND CORNERS ARE BASED ON STATE PLANE GRID NORTH WV NORTH ZONE NAD '27. MAGNETIC NORTH 10-31-2000.
2. TIES TO REFERENCES ARE BASED ON MAGNETIC NORTH 10-31-2000.
3. LEASE BOUNDARY SHOWN HEREON TAKEN FROM DEED BOOK 112 ON PAGE 91.
4. SURFACE OWNER AND ADJOINER INFORMATION TAKEN FROM THE ASSESSOR AND COUNTY CLERK RECORDS OF DODDRIDGE COUNTY IN OCTOBER, 2000.
5. WELL LAT./LONG. ESTABLISHED BY DGPS (SUBMETER MAPPING GRADE).

### REFERENCES



I THE UNDERSIGNED, HEREBY CERTIFY THAT THIS PLAT IS CORRECT TO THE BEST OF MY KNOWLEDGE AND BELIEF AND SHOWS ALL THE INFORMATION REQUIRED BY LAW AND THE REGULATIONS ISSUED AND PRESCRIBED BY THE DEPARTMENT OF ENERGY.

P.S. *Gregory A. Smith*  
677



(+) DENOTES LOCATION OF WELL ON UNITED STATES TOPOGRAPHIC MAPS.

DATE NOVEMBER 9, 20 00  
OPERATORS WELL NO. LEWIS MAXWELL NO. 5  
API NO. \_\_\_\_\_  
WELL NO. 47-17 STATE 44562 COUNTY PERMIT

MINIMUM DEGREE OF ACCURACY 1 / 200 FILE NO. 4185P5 (92-44)  
PROVEN SOURCE OF ELEVATION JUNCTION OF ROADS ELEVATION 816'  
SCALE 1" = 1000'

STATE OF WEST VIRGINIA  
DIVISION OF ENVIRONMENTAL PROTECTION  
OFFICE OF OIL AND GAS



WELL TYPE : OIL \_\_\_\_\_ GAS  LIQUID WASTE \_\_\_\_\_ INJECTION \_\_\_\_\_ DISPOSAL \_\_\_\_\_ "GAS" PRODUCTION  STORAGE \_\_\_\_\_ DEEP \_\_\_\_\_ SHALLOW \_\_\_\_\_  
LOCATION : ELEVATION 953' WATERSHED CLAYLICK RUN

DISTRICT CENTRAL COUNTY DODDRIDGE QUADRANGLE WEST UNION 7.5'  
SURFACE OWNER CHARLES J. AND EDNA B. SPURGEON ACREAGE 35±  
ROYALTY OWNER LEWIS MAXWELL HEIRS, et al LEASE ACREAGE 960± LEASE NO. \_\_\_\_\_  
PROPOSED WORK :  
DRILL  CONVERT \_\_\_\_\_ DRILL DEEPER \_\_\_\_\_ REDRILL \_\_\_\_\_ FRACTURE OR STIMULATE  PLUG OFF OLD FORMATION \_\_\_\_\_ PERFORATE NEW FORMATION \_\_\_\_\_ PLUG AND ABANDON \_\_\_\_\_ CLEAN OUT AND REPLUG \_\_\_\_\_ OTHER \_\_\_\_\_  
PHYSICAL CHANGE IN WELL (SPECIFY) \_\_\_\_\_ TARGET FORMATION ALEXANDER ESTIMATED DEPTH 5600'

WELL OPERATOR KEY OIL COMPANY \_\_\_\_\_ DESIGNATED AGENT JAN CHAPMAN  
ADDRESS 22 GARTON PLAZA WESTON, WV 26452 ADDRESS 22 GARTON PLAZA WESTON, WV 26452

Dodd 4562

6-6-09 DEC 9 2009

12-1-01  
API# 47-17-04562

*pu B*

State of West Virginia  
Division of Environmental Protection  
Section of Oil and Gas

Well Operators Report of Well Work

Farm name: Charles J. Spurgeon, et ux Operator Well #: Lewis Maxwell #5

Location: Elevation: 953' Quadrangle: West Union 7.5'

District: Central County: Doddridge

Latitude 7470 feet south of 39 Deg. 17 Min. 30 Sec.  
Longitude 8620 feet west of 80 Deg. 47 Min. 30 Sec.

Company: Key Oil Company  
22 Garton Plaza  
Weston, WV 26452

Agent: Jan Chapman

Used in Drilling Left in Well Cement Fill up

Inspector: Mike Underwood	11 3/4	265	219	95 sks
Permit Issued: 11-9-00	8-5/8	1015	5964	215 sks
Well Work Commenced: 6-5-01	4-1/2	5375	5296	470sks

Well Work Completed: 6-10-01

Verbal Plugging  
Permission granted on:  
Rotary Cable Rig

Total Depth (ft) 5375'

Fresh water depth (ft) 87'

Salt water depth (ft) N/A

Is coal being mined in are (Y/N) N

Coal depths (ft) N/A

OPEN FLOW DATA

Producing formation	Alexander/Benson	Pay zone depths (ft)	4807-5212
Gas: Initial open flow	show mcf/d	Initial open flow	bbls/day
Final open flow	1586 mcf/d	Final open flow	bbls/day
Time of open flow between initial and final tests		Hours	Hours
Static rock pressure	1750# psig (surface pressure) after	Hours	Hours

Other producing formation	Riley/Warren	Pay zone depths (ft)	3321-4476
Gas: Initial open flow *	mcf/day	Initial open flow	bbls/day
Final open flow	* mcf/day	Final open flow	bbls/day
Time of open flow between initial and final tests		Hours	Hours
Static rock pressure	psig (surface pressure) after	Hours	Hours

\* = commingled zones

For: Key-Oil Company

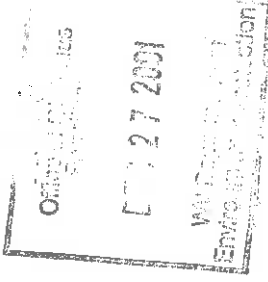
*[Signature]*

Date: 12-1-01

FEB 01 2002

FEB 01 2002

0000 4562



API # 47-017-04562

Stage #1 Alexander	perfs 5154-5212	sand 600 sks	60 quality foam
Stage #2 Benson	4807-4896	400 sks	60 quality foam
Stage #3 Riley/Lower Balltown	4307-4477	500 sks	60 quality foam
Stage #4 Upper Balltown/ Speechly Warren	3321-3870	500 sks	60 quality foam

Drillers Log

Electric Log Tops

KB/GL	0-10		
Fill	10-19		
Shale	19-41		
Sand	41-108	water @ 87	
Shale	108-167		
Sand	167-201		
RR	201-214		
Sd/Sh	214-254		
Sd/Sh	254-261		
RR	261-283		
Sd	283-539	water @ 490	
Sand	539-543		
Sd/Sh	543-647		
Sand	647-657		
Sd/Sh	657-1178		
Sand	1178-1272		
Sd/Sh	1272-1673	oil @ 1606 -- odor	
Sand	1673-1740		
Sd/Sh	1740-1902		
L. Lime	1902-1950	gas check @ 1922 -- now show	
B. Lime	1950-2090		
B. Injun	2090-2136	gas check @ 2115 - odor	
Sd/Sh	2136-3326		
Sd/Sh	3326-3356	gas check @ 3329 -- odor	
Balltown	3750-3900		
Sd/Sh	3900-4505	gas check @ 4501 -- odor	
Riley	4505-4525		
Sd/Sh	4525-4925	gas check @ 4905 -- odor	
Benson	4925-4931		
Sd/Sh	4931-5104		
Alexander	5104-5136	gas check @ 5123 -- odor	
Sd/Sh	5136-5404	gs check @ 5404 -- odor	
TD	5404		