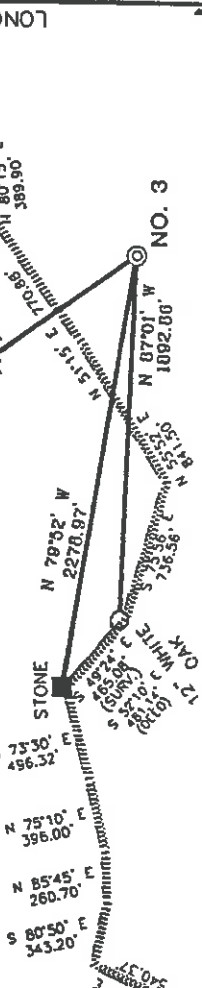


# W.B. MAXWELL LEASE 2,400 ACRES ± WELL NO. 3

HAESLY HARDWOOD LUMBER CO.  
(SURFACE) 615 AC. ±  
SHARP TRAIL



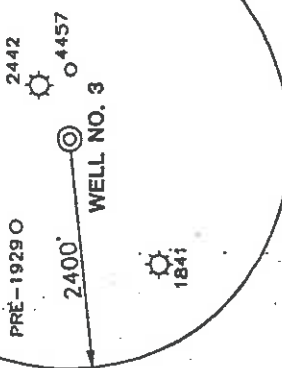
I.L. MORRIS  
6,603.75 AC. ±  
(SURFACE)

### NOTES ON SURVEY

1. TIES TO WELLS AND CORNERS ARE BASED ON STATE PLANE GRID NORTH WY NORTH ZONE NAD '27.
2. TIES TO REFERENCES ARE BASED ON MAGNETIC NORTH 3-1-99.
3. LEASE BOUNDARY SHOWN HEREON TAKEN FROM DODDRIDGE COUNTY DEED BOOK 28 ON PAGE 210.
4. SURFACE OWNER AND ADJOINER INFORMATION TAKEN FROM THE ASSESSOR AND COUNTY CLERK RECORDS OF DODDRIDGE COUNTY IN JANUARY, 1999.
5. WELL LAT./LONG. ESTABLISHED BY DGPS(SUBMETER MAPPING GRADE).

### REFERENCES

- 4" BEECH (120.2' SLOPE) N 09°00' W 112.20'
- 5" SUGAR MAPLE (154' SLOPE) N 37°00' E 153.90'



266  
55

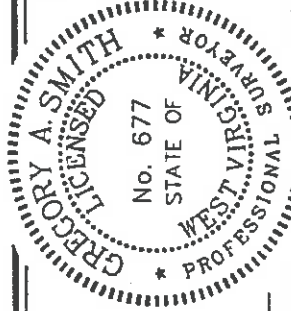
SLS

1" = 100'

I THE UNDERSIGNED, HEREBY CERTIFY THAT THIS PLAT IS CORRECT TO THE BEST OF MY KNOWLEDGE AND BELIEF AND SHOWS ALL THE INFORMATION REQUIRED BY LAW AND THE REGULATIONS ISSUED AND PRESCRIBED BY THE DEPARTMENT OF ENERGY

P.S. 677

*Gregory A. Smith*



(+) DENOTES LOCATION OF WELL ON UNITED STATES TOPOGRAPHIC MAPS.

DATE MARCH 3, 19 99  
OPERATORS WELL NO. W.B. MAXWELL #3

API WELL NO. 47-17-4510  
STATE COUNTY PERMIT

MINIMUM DEGREE OF ACCURACY 1 / 200 FILE NO. 4152P3 (69-72)

PROVEN SOURCE OF ELEVATION JUNCTION OF ROADS ELEVATION 886'

SCALE 1" = 1000'



STATE OF WEST VIRGINIA  
DIVISION OF ENVIRONMENTAL PROTECTION  
OFFICE OF OIL AND GAS

WELL TYPE: OIL  GAS  INJECTION  WASTE DISPOSAL  "GAS" PRODUCTION  STORAGE  DEEP  SHALLOW

LOCATION:

ELEVATION 1096' WATERSHED TRIBUTARY OF BIG RUN OF SOUTH FORK HUGHES RIVER

DISTRICT SOUTHWEST COUNTY DODDRIDGE QUADRANGLE OXFORD 7.5'

SURFACE OWNER I.L. MORRIS ACREAGE 6,603.75

ROYALTY OWNER W.B. MAXWELL HEIRS ET AL LEASE ACREAGE 2,400

PROPOSED WORK: LEASE NO.

DRILL  CONVERT  DRILL DEEPER  FRACTURE OR STIMULATE  PLUG OFF OLD

FORMATION  PERFORATE NEW FORMATION  PLUG AND ABANDON  CLEAN OUT AND REPLUG  OTHER

PHYSICAL CHANGE IN WELL (SPECIFY) TARGET FORMATION ALEXANDER

ESTIMATED DEPTH 5600'

WELL OPERATOR KEY OIL COMPANY

DESIGNATED AGENT JAN CHAPMAN

ADDRESS 22 GARTON PLAZA WESTON, WV 26452

ADDRESS 22 GARTON PLAZA WESTON, WV 26452

COUNTY NAME DODD

PERMIT 4510

MAY 24 1999

6-6-133

WR-35

Office of Oil & Gas  
Permitting

OCT 25 1999

WV Division of

18-May-99  
API # 47 - 017-4510

State of West Virginia  
Division of Environmental Protection  
Section of Oil and Gas

Reviewed \_\_\_\_\_

Well Operator's Report of Well Work \_\_\_\_\_

Farm name: MORRIS, I.L.

Operator Well No.: W.B. MAXWELL 3

LOCATION: Elevation: 1,096.00  
District: SOUTHWEST  
Latitude: 14060 Feet South of 39 Deg. 15 Min. 00 Sec.  
Longitude: 2920 Feet West of 80 Deg. 47 Min. 30 Sec.

Quadrangle: OXFORD  
County: DODDRIDGE

Company: KEY OIL COMPANY  
22 GARTON PLAZA  
WESTON, WV 26452-0000

Agent: JAN E. CHAPMAN

Inspector: MIKE UNDERWOOD  
Permit Issued: 05/21/99  
Well Work Commenced: 09/10/99  
Well Work Completed: 09/14/99

Verbal Plugging  
Permission granted on: \_\_\_\_\_ Rig  
Rotary X Cable \_\_\_\_\_  
Total Depth ( feet ) \_\_\_\_\_ 5295'  
Fresh water depths ( ft ) \_\_\_\_\_ 50'  
Salt water depths ( ft ) \_\_\_\_\_ 200'

Is coal being mined in area ( Y / N )? N  
Coal Depths ( ft ): NONE

OPEN FLOW DATA

Warren  
Speechley  
Balltown  
Rileys  
Benson  
Elk

Producing formation Alexander

Gas: Initial open flow Show MCF / d  
Final open flow 1,563 MCF / d

Time of open flow between initial and final tests N/A Hours  
Static rock pressure 1700 psig ( surface pressure ) after 96 Hours

Second producing formation Commingled

Gas: Initial open flow MCF / d  
Final open flow MCF / d

Time of open flow between initial and final tests \_\_\_\_\_ Hours  
Static rock pressure \_\_\_\_\_ psig ( surface pressure ) after \_\_\_\_\_ Hours

3136' - 3198'  
3207' - 3463'  
3492' - 4256'  
4312' - 4732'  
4777' - 4788'  
4974' - 4995'  
5024' - 5128'

Pay zone depth ( ft )  
Oil: Initial open flow 0 Bbl / d  
Oil: Final open flow show Bbl / d  
Hours  
Hours

Pay zone depth ( ft )  
Oil: Initial open flow \_\_\_\_\_ Bbl / d  
Oil: Final open flow \_\_\_\_\_ Bbl / d  
Hours  
Hours

Casing & Tubing Size	Used in Drilling	Left in Well	Cement Fill Up Cu. Ft.
11 3/4"	128'	128'	70 sks To Surface
8 5/8"	1366.90'	1366.90'	340 sks To Surface
4 1/2"	5231.65'	5231.65'	475 sks
2 3/8"		5031'	

NOTE: ON BACK OF THIS FORM PUT THE FOLLOWING: 1). DETAILS OF PERFORATED INTERVALS, FRACTURING OR STIMULATING, PHYSICAL CHANGE, ETC. 2). THE WELL LOG WHICH IS A SYSTEMATIC DETAILED GEOLOGICAL RECORD OF ALL FORMATIONS, INCLUDING COAL ENCOUNTERED BY THE WELLBORE.

For: KEY OIL COMPANY

By: \_\_\_\_\_  
Date: October 1, 1999

PRESIDENT

NOV 2 1999

0000 4510

W. B. Maxwell #3 (47-017-4510)

Four Stage Foam Frac - Halliburton

1<sup>st</sup> Stage: Alexander ( 16 holes ) ( 5051.75' to 5124.50' ) 60 Quality Foam. 500 gal. 15% HCL.  
 Elk ( 2 holes ) ( 4992' to 4992.25' ) 60,000# 20/40 sand, 550,000 SCF N2,  
 808 bbis foam.

2<sup>nd</sup> Stage: Benson ( 5 holes ) ( 4781.50' to 4782.50' ) 60 Quality Foam. 750 gal 15% HCL.  
 Third Riley ( 5 holes ) 4701.25' to 4710.25' ) 40,000# 20/40 sand, 417,000 SCF N2,  
 Second Riley ( 4 holes ) ( 4586' to 4586.75' ) 614 bbis foam.

3<sup>rd</sup> Stage: Riley ( 8 holes ) ( 4356.75' to 4372.75' ) 60 Quality Foam. 1,000 gal 15% HCL.  
 Balltown ( 6 holes ) ( 4105.50' to 4236' ) 5,000# 80/100 sand, 45,000# 20/40 sand,  
 502,000 SCF N2, 740 bbis foam.

4<sup>th</sup> Stage: Speechley ( 6 holes ) ( 3251.75' to 3294.50' ) 60 Quality Foam. 750 gal 15% HCL.  
 Warren ( 8 hole ) ( 3170.25' to 3189.75' ) 5,000# 80/100 sand, 45,000# 20/40 sand,  
 502,000 SCF N2, 684 bbis foam.

WELL LOG

Red Rock	0	26	
Sand	26	54	1/4" water @ 50'
Shell	54	62	
Sand	62	220	1/2" water @ 200'
Sand & Shale	220	230	
Red Rock	230	246	
Sand & Shale	246	314	
Red Rock	314	325	
Sand & Shale	325	680	
Red Rock & Sand & Shale	680	848	
Sand	848	926	
Sand & Shale & Red Rock	926	1030	
Sand & Shale	1030	1258	
Sand	1258	1300	
Red Rock & Shale	1300	1328	
Maxton	1328	1575	
Sand & Shale	1575	1736	
Little Lime	1736	1762	
Sand & Shale	1762	1781	
Big Lime	1781	1838	
Big Injun	1838	1914	
Shale	1914	2068	
Weir	2068	2186	
Shale	2186	2270	
Berea	2270	2280	
Shale & Sand	2280	3136	
Warren	3136	3198	
Shale	3198	3207	
Speechley	3207	3463	
Shale	3463	3492	
Balltown	3492	4256	
Shale	4256	4312	
Riley	4312	4387	
Shale	4387	4580	
Second Riley	4580	4593	
Shale	4593	4670	
Third Riley	4670	4732	
Shale	4732	4777	
Benson	4777	4788	
Shale	4788	4974	
Upper Elk	4974	4995	
Shale	4995	5024	
Alexander	5024	5128	
Sand & Shale	5128	5295	
T.D.	5295		

Gas Checks

1785' - 2/10<sup>ths</sup> - 1/2" - H<sup>2</sup>O  
 2001' - 2/10<sup>ths</sup> - 1/2" - H<sup>2</sup>O  
 3023' - 2/10<sup>ths</sup> - 1/2" - H<sup>2</sup>O  
 3520' - 2/10<sup>ths</sup> - 1/2" - H<sup>2</sup>O  
 4292' - 2/10<sup>ths</sup> - 1/2" - H<sup>2</sup>O  
 4754' - 2/10<sup>ths</sup> - 1/2" - H<sup>2</sup>O  
 5098' - 10/10<sup>ths</sup> - 1/2" - H<sup>2</sup>O