

MARTIN HEIRS LEASE 21.20 ACRES±

CHARLES NESLER
67 AC.±
(SURFACE)

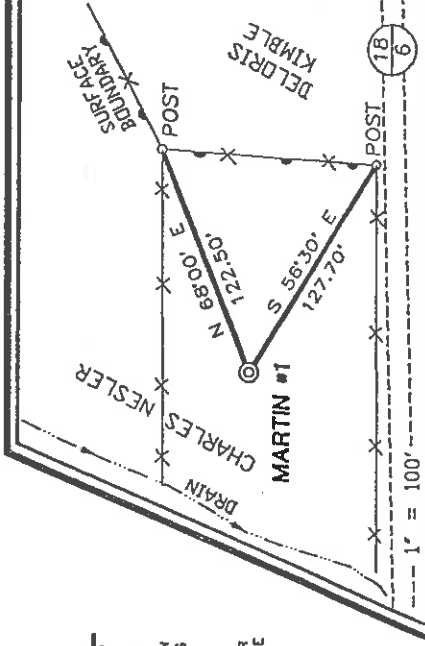
CHARLES NESLER
12.45 AC.±
(SURFACE)

DELORIS KIMBLE
0.99 AC.±
(SURFACE)

APRIL K. WRIGHT
ET AL

WELL NO. 1

REFERENCES



MARTIN #1

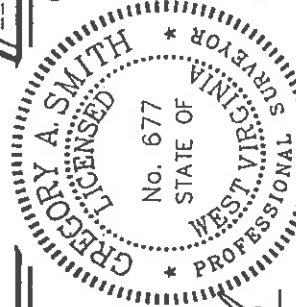
NOTES ON SURVEY

1. TIES TO WELLS AND CORNERS ARE BASED ON STATE PLANE GRID NORTH WV NORTH ZONE 'NAD '27.
2. LEASE BOUNDARY SHOWN HEREON TAKEN FROM A TITLE REPORT DATED 10/27/88 AS PREPARED BY R. BRUCE WHITE FOR RUBIN RESOURCES, INC.
3. SURFACE OWNERS AND ADJONER INFORMATION OBTAINED FROM THE ASSESSOR AND COUNTY CLERK RECORDS OF DODDRIIDGE COUNTY IN OCTOBER 1998.
4. WELL LAT./LONG. ESTABLISHED BY DGPS (SUBMETER MAPPING GRADE).
5. TIES TO REFERENCES ARE BASED ON MAGNETIC NORTH 10/29/98.

1.51.92

I THE UNDERSIGNED, HEREBY CERTIFY THAT THIS PLAT IS CORRECT TO THE BEST OF MY KNOWLEDGE AND BELIEF AND SHOWS ALL THE INFORMATION REQUIRED BY LAW AND THE REGULATIONS ISSUED AND PRESCRIBED BY THE DEPARTMENT OF ENERGY.

P.S. *Gregory A. Smith*
677



(+) DENOTES LOCATION OF WELL ON UNITED STATES TOPOGRAPHIC MAPS.

DATE NOVEMBER 4, 19 98

OPERATORS WELL NO. MARTIN #1

API WELL NO. 47-017-04495

STATE COUNTY PERMIT

MINIMUM DEGREE OF ACCURACY 1 200 FILE NO. 4098P1 (69-52)
PROVEN SOURCE SCALE 1" = 400'
JUNCTION OF ROADS ELEVATION 818'

STATE OF WEST VIRGINIA
DIVISION OF ENVIRONMENTAL PROTECTION
OFFICE OF OIL AND GAS

WELL TYPE : OIL GAS INJECTION WASTE DISPOSAL "GAS" PRODUCTION STORAGE DEEP SHALLOW

LOCATION : ELEVATION 901' WATERSHED EIBSCAMP RUN

DISTRICT NEW MILTON COUNTY DODDRIIDGE QUADRANGLE SMITHBURG 7.5'

SURFACE OWNER CHARLES NESLER ET AL ACREAGE 12.45 OF 21.20

ROYALTY OWNER JOHN KENNETH MARTIN ET AL LEASE ACREAGE 21.20 LEASE NO. _____

PROPOSED WORK : DRILL CONVERT DRILL DEEPER REDRILL FRACTURE OR STIMULATE PLUG OFF OLD FORMATION PERFORATE NEW FORMATION PLUG AND ABANDON CLEAN OUT AND REPLUG OTHER _____

PHYSICAL CHANGE IN WELL (SPECIFY) _____ TARGET FORMATION GORDON ESTIMATED DEPTH 3000'

WELL OPERATOR RUBIN RESOURCES, INC. DESIGNATED AGENT RICK RUBIN

ADDRESS 1007 C. BRIDGE RD., CHARLESTON, WV 25314 ADDRESS 1007 C. BRIDGE RD., CHARLESTON, WV 25314

COUNTY NAME DODD

PERMIT 44195

6-6 99

WR-35

06-NOV-98
API # 47- 17-04495

State of West Virginia
Division of Environmental Protection
Section of Oil and Gas

Reviewed *[Signature]*

Well Operator's Report of Well Work

Farm name: NESLER, CHARLES Operator Well No.: MARTIN #1

LOCATION: Elevation: 901.00 Quadrangle: SMITHBURG

District: NEW MILTON County: DODDRIDGE
Latitude: 10630 Feet South of 39 Deg. 17Min. 30 Sec.
Longitude 8420 Feet West of 80 Deg. 40 Min. 0 Sec.

Company: RUBIN RESOURCES CO.
1007 C BRIDGE RD.
CHARLESTON, WV 25314-0000

Agent: RICK RUBIN

Inspector: MIKE UNDERWOOD
Permit Issued: 11/06/98
Well work Commenced: 11-9-99
Well work Completed: 11-12-99
Verbal Plugging
Permission granted on: n/a
Rotary Cable Rig
Total Depth (feet) 2578
Fresh water depths (ft) 15
Salt water depths (ft) 239

Is coal being mined in area (Y/N)? n
Coal Depths (ft): 15 Show

OPEN FLOW DATA

Producing formation Go-don Pay zone depth (ft) 2350-60
Gas: Initial open flow 65 MCF/d Oil: Initial open flow Show Bbl/d
Final open flow 130 MCF/d Final open flow Show Bbl/d
Time of open flow between initial and final tests 8 Hours
Static rock Pressure 565 psig (surface pressure) after 29 Hours

Second producing formation Is-jon Pay zone depth (ft) 1756-70
Gas: Initial open flow 65 MCF/d Oil: Initial open flow Show Bbl/d
Final open flow 130 MCF/d Final open flow Show Bbl/d
Time of open flow between initial and final tests 8 Hours
Static rock Pressure 565 psig (surface pressure) after 29 Hours
Commented

NOTE: ON BACK OF THIS FORM PUT THE FOLLOWING: 1). DETAILS OF PERFORATED INTERVALS, FRACTURING OR STIMULATING, PHYSICAL CHANGE, ETC. 2). THE WELL LOG WHICH IS A SYSTEMATIC DETAILED GEOLOGICAL RECORD OF ALL FORMATIONS, INCLUDING COAL ENCOUNTERED BY THE WELLBORE.

For: RUBIN RESOURCES CO.
By: Rick Rubin
Date: 3-31-99
Dodd 4495

Casing & Tubing Size	Used in Drilling	Left in Well	Cement Fill Up Cu. Ft.
11 3/4	132	132	To Surface
8 5/8	1106	1106	To Surface
4 1/2	2419	2419	200 SPS

RECEIVED
Office of Oil & Gas
Permitting
MAR 31 1999
WV DIVISION OF
Environmental Protection

APR 2 1999

	<u>Gordon</u>	<u>Injun</u>
Perforation Interval	2353-2360	1760-1769
# of Perforations	10	12
Type of Frac	X Link-H ₂ O	X Link-H ₂ O
SKS. of Sand	250	285

<u>Formation</u>	<u>Top Feet</u>	<u>Bottom Feet</u>
Clay & Fill	0	14
Sand & Gr. Shale	14	103
Red Rock	103	112
White Sand & Shale	112	360
Red Rock	360	387
Sand & Gray Shale	387	480
Red Rock	480	515
Sand & Shale	515	1576
Little Lims	1576	1592
Shale	1592	1604
Big Lims	1604	1735
Injun	1735	1770
Shale	1770	2350
Gordon	2350	2360
Shale	2360	2578 T.D.

RECEIVED
 Office of Oil & Gas
 Permitting
 MAR 31 1999
 WV Division of
 Environmental Protection