

KELLEY LEASE 2.35 ACRES WELL NO. 1

LATITUDE 39°17'30"

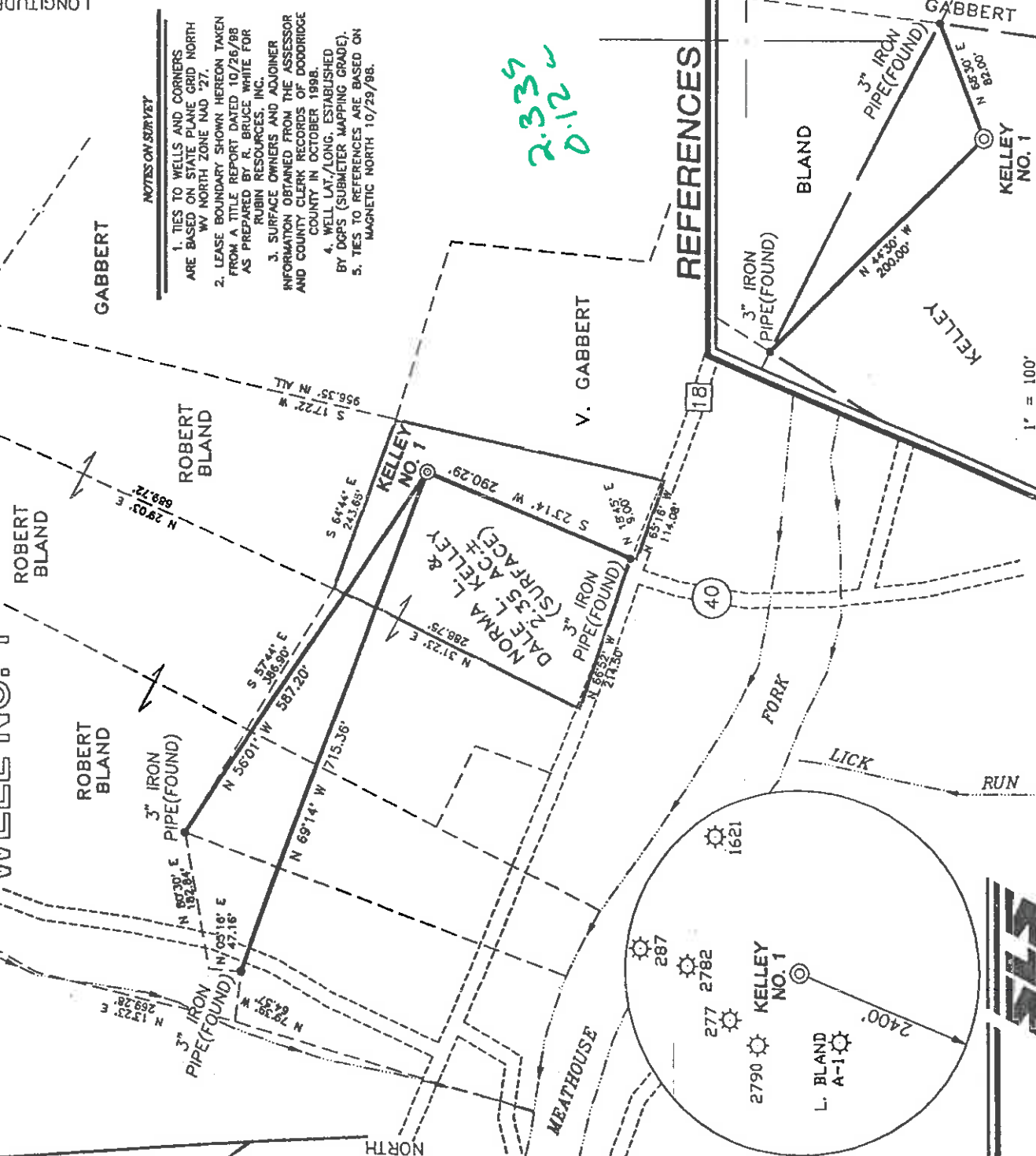
LONGITUDE 80°42'30"

2790

NOTES ON SURVEY

1. TIES TO WELLS AND CORNERS ARE BASED ON STATE PLANE GRID NORTH WV NORTH ZONE NAD '27.
2. LEASE BOUNDARY SHOWN HEREON TAKEN FROM A TITLE REPORT DATED 10/26/88 AS PREPARED BY R. BRUCE WHITE FOR RUBIN RESOURCES, INC.
3. SURFACE OWNERS AND ADJAINER INFORMATION OBTAINED FROM THE ASSESSOR AND COUNTY CLERK RECORDS OF DODDRIDGE COUNTY IN OCTOBER 1998.
4. WELL LAT./LONG. ESTABLISHED BY DGPS (SUBMETER MAPPING GRADE).
5. TIES TO REFERENCES ARE BASED ON MAGNETIC NORTH 10/29/98.

2.35
0.12



I THE UNDERSIGNED, HEREBY CERTIFY THAT THIS PLAT IS CORRECT TO THE BEST OF MY KNOWLEDGE AND BELIEF AND SHOWS ALL THE INFORMATION REQUIRED BY LAW AND THE REGULATIONS ISSUED AND PRESCRIBED BY THE DEPARTMENT OF ENERGY.

P.S. *Gregory A. Smith*
677

MINIMUM DEGREE OF ACCURACY 1 / 200 FILE NO. 4097P1 (69-52)
PROVEN SOURCE OF ELEVATION JUNCTION OF ROADS ELEVATION 818'
SCALE 1" = 200'

WELL TYPE : OIL GAS INJECTION WASTE LIQUID DISPOSAL "GAS" PRODUCTION STORAGE DEEP SHALLOW

LOCATION : ELEVATION 877' WATERSHED MEATHOUSE FORK

DISTRICT NEW MILTON COUNTY DODDRIDGE QUADRANGLE SMITHBURG 7.5'

SURFACE OWNER NORMA LEE KELLEY AND DALE L. KELLEY ACREAGE 2.35

ROYALTY OWNER NORMA LEE KELLEY AND DALE L. KELLEY LEASE ACREAGE 2.35

PROPOSED WORK : LEASE NO. _____

DRILL CONVERT DRILL DEEPER REDRILL FRACTURE OR STIMULATE X PLUG OFF OLD FORMATION PERFORATE NEW FORMATION PLUG AND ABANDON CLEAN OUT AND REPLUG OTHER _____

PHYSICAL CHANGE IN WELL (SPECIFY) _____ TARGET FORMATION GORDON ESTIMATED DEPTH 3000'

WELL OPERATOR RUBIN RESOURCES, INC. DESIGNATED AGENT RICK RUBIN

ADDRESS 1007 C BRIDGE RD., CHARLESTON, WV 25314

(+) DENOTES LOCATION OF WELL ON UNITED STATES TOPOGRAPHIC MAPS.

DATE NOVEMBER 4, 19 98

OPERATORS WELL NO. KELLEY #1

API WELL NO. 47-017 PERMIT

STATE COUNTY PERMIT



COUNTY NAME DODD PERMIT 47494

6-6 99

WR-35

06-NOV-98
API # 47- 17-04494

RECEIVED
Office of Oil & Gas
Permitting

State of West Virginia
Division of Environmental Protection
Section of Oil and Gas

Reviewed BS

MAR 31 1999

Well Operator's Report of Well Work

Faxed to: Environmental Protection

KELLEY, DALE & NORMA LEE Operator Well No.: KELLEY #1

LOCATION: Elevation: 877.00 Quadrangle: SMITHBURG

District: NEW MILTON County: DODDRIDGE
Latitude: 12320 Feet South of 39 Deg. 17Min. 30 Sec.
Longitude 630 Feet West of 80 Deg. 42 Min. 30 Sec.

Company: RUBIN RESOURCES CO.
1007 C BRIDGE RD.
CHARLESTON, WV 25314-0000

Agent: RICK RUBIN

Inspector: MIKE UNDERWOOD
Permit Issued: 11/06/98
Well work Commenced: 11-14-98
Well work Completed: 11-17-98
Verbal Plugging
Permission granted on: N/A
Rotary Cable Rig
Total Depth (feet) 2450'
Fresh water depths (ft) 18'

Salt water depths (ft) 776'

Is coal being mined in area (Y/N)? N
Coal Depths (ft): No Show

Casing & Tubing Size	Used in Drilling	Left in Well	Cement Fill Up Cu. Ft.
11 3/4	132	100	to surface
8 1/4	1050	1050	to surface
4 1/2	2393	2393	242 sbs.

OPEN FLOW DATA

Producing formation Garden Pay zone depth (ft) 2290-2310
Gas: Initial open flow 40 MCF/d Oil: Initial open flow Show Bbl/d
Final open flow 70 MCF/d Final open flow Show Bbl/d
Time of open flow between initial and final tests 8 Hours
Static rock Pressure 55 psig (surface pressure) after 24 Hours

Second producing formation Trigon Pay zone depth (ft) 1690-1700
Gas: Initial open flow 40 MCF/d Oil: Initial open flow Show Bbl/d
Final open flow 70 MCF/d Final open flow Show Bbl/d
Time of open flow between initial and final tests 8 Hours
Static rock Pressure 55 psig (surface pressure) after 24 Hours

Commented

NOTE: ON BACK OF THIS FORM PUT THE FOLLOWING: 1). DETAILS OF PERFORATED INTERVALS, FRACTURING OR STIMULATING, PHYSICAL CHANGE, ETC. 2). THE WELL LOG WHICH IS A SYSTEMATIC DETAILED GEOLOGICAL RECORD OF ALL FORMATIONS, INCLUDING COAL ENCOUNTERED BY THE WELLBORE.

For: RUBIN RESOURCES CO.

By: Rick Rubin

Date: 3-31-99

DODD 4494

APR 12 1999

Portation Interval	<u>Gordon</u>	<u>Injun</u>
	2296-2311	1652-1700
# of Portations	12	12
Type of Frac	XLINK-H ₂ O	XLINK-H ₂ O
SKs of Sand	320	341

<u>Formation</u>	<u>Top Test</u>	<u>Bottom Foot</u>
Brown Sand & Clay	0	28
Gray Shale	29	200
White Sand	200	211
Gray Sand & Shale	211	330
Red Rock	330	395
White Sand & Gray Shale	395	425
Red Rock	425	455
White Sand & Gray Shale	455	520
White Sand & Gray Shale	520	540
Shale	540	545
Big Line	545	680
Injun	680	716
Sand & Shale	716	2290
Gordon	2290	2311
Shale	2311	2450 T.O.

RECEIVED
 Office of Oil & Gas
 Permitting
 MAR 31 1999
 WV Division of
 Environmental Protection