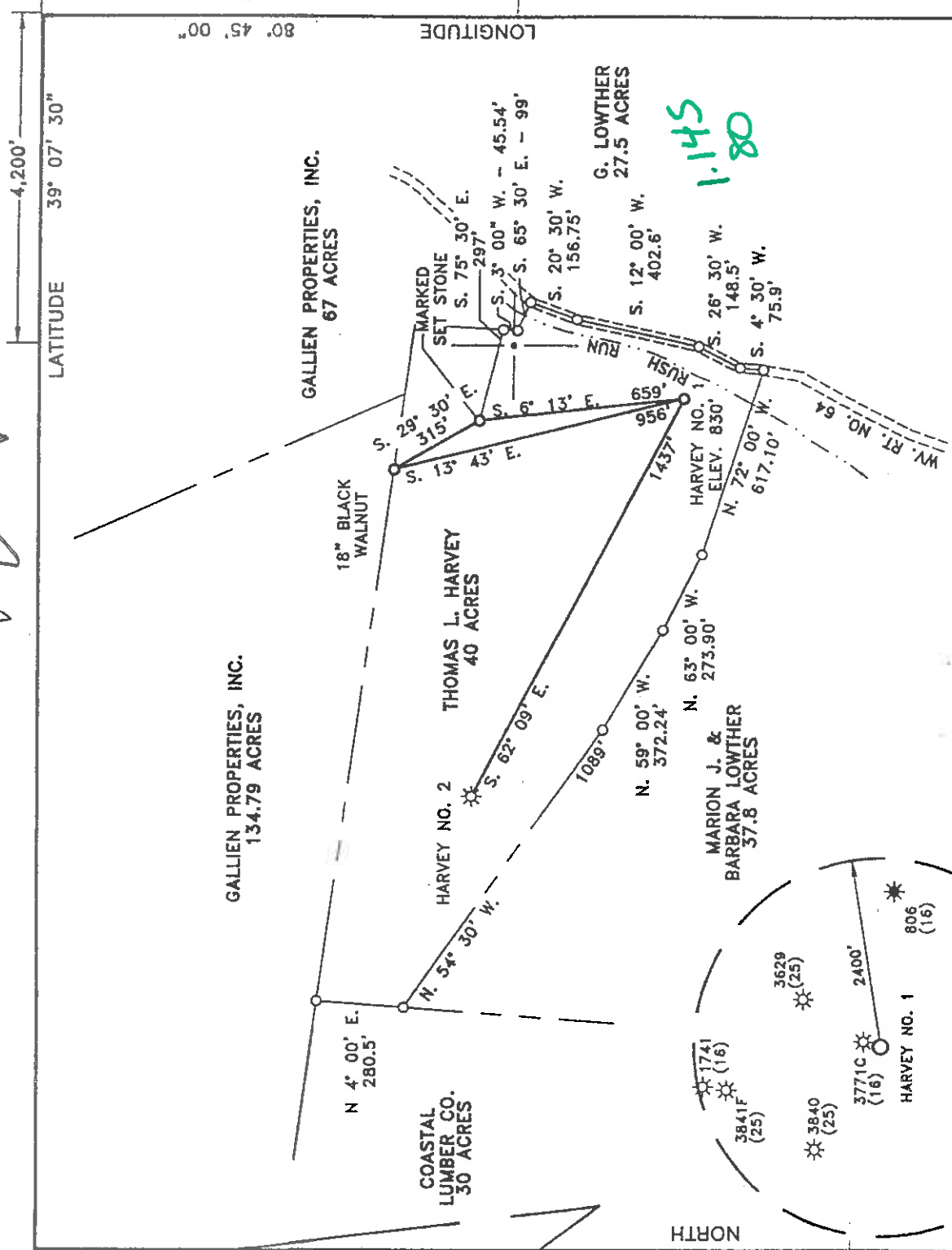


V ✓



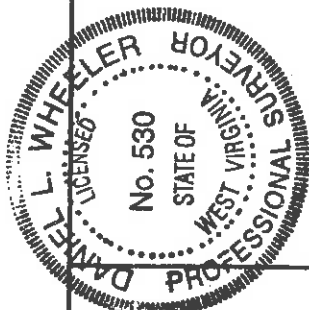
WELL REFERENCES
 LOC. TO PIPELINE RISER TEE - S. 6° 25' E. 174'
 LOC. TO 8" LOCUST - N. 66° 15' W. 125'

D. L. WHEELER & ASSOCIATES, INC.
 401 N. OHIO AVENUE
 CLARKSBURG, WEST VIRGINIA 26301
 Tele. Ph.: 304-623-5851
 Fax. No.: 304-623-6131

(+) DENOTES LOCATION OF WELL ON UNITED STATES TOPOGRAPHIC MAPS

FILE NO. _____
 DRAWING NO. _____
 SCALE 1" = 500'
 MINIMUM DEGREE OF ACCURACY 1 IN 200
 PROVEN SOURCE OF ELEVATION GALLIEN NO. 1
 ELEV. = 842'

I THE UNDERSIGNED, HEREBY CERTIFY THAT THIS PLAT IS CORRECT TO THE BEST OF MY KNOWLEDGE AND BELIEF AND SHOWS ALL THE INFORMATION REQUIRED BY LAW AND THE REGULATIONS ISSUED AND PRESCRIBED BY THE DEPARTMENT OF MINES.
 (SIGNED) *Daniel L. Wheeler*
 R.P.E. L.L.S. DANIEL L. WHEELER 530



PLACE SEAL HERE

STATE OF WEST VIRGINIA
 DEPARTMENT OF MINES
 OIL AND GAS DIVISION



DATE JULY 10, 19 98
 OPERATOR'S WELL NO. HARVEY NO. 1
 API WELL NO. 47-017-04489

WELL TYPE: OIL GAS LIQUID INJECTION WASTE DISPOSAL
 (IF "GAS,") PRODUCTION STORAGE DEEP SHALLOW
 LOCATION: ELEVATION 830' WATERSHED RUSH RUN
 DISTRICT COVE COUNTY DODDRIDGE

QUADRANGLE AUBURN 7.5'
 SURFACE OWNER THOMAS L. HARVEY
 OIL & GAS ROYALTY OWNER THOMAS L. HARVEY ET. AL. LEASE ACREAGE 40 ACRES

PROPOSED WORK: DRILL CONVERT DRILL DEEPER REDRILL FRACTURE OR STIMULATE PLUG OFF OLD FORMATION PERFORATE NEW FORMATION OTHER PHYSICAL CHANGE IN WELL (SPECIFY) _____

PLUG AND ABANDON CLEAN OUT AND REPLUG
 TARGET FORMATION FIFTH SAND ESTIMATED DEPTH 3,000'
 WELL OPERATOR INTERSTATE DRILLING INC. DESIGNATED AGENT KENNETH L. POTE
 ADDRESS RT. 3, BOX 89V WESTON, WV. 26452

0000 COUNTY NAME

4489 PERMIT

WR-35

08-Oct-98
API # 47- 17-04489

State of West Virginia
Division of Environmental Protection
Section of Oil and Gas
Well Operator's Report of Well Work

Farm Name: HARVEY, THOMAS L Operator Well No.: HARVEY #1
LOCATION: Elevation: 830.00' Quadrangle: AUBURN

District: COVE County: DODDRIDGE
Latitude: 6100 Feet South of 39 Deg. 7 Min. 30 Sec.
Longitude: 4200 Feet West of 80 Deg. 45 Min. 0 Sec

Company: INTERSTATE ENERGY, INC.
RT 3 BOX 89-V
WESTON, WV 26452-9620
Agent: KENNETH L. POTE

Inspector: MIKE UNDERWOOD
Permit Issued: 10/08/98
Well Work Commenced: 12/03/98
Well Work Completed: 12/07/98
Verbal Plugging
Permission granted on: _____

Rotary X Cable _____ Rig _____
Total Depth (Feet) _____ 2985 Feet
Fresh water depths (ft.) 5'; 25'

Salt water depths (ft.) _____ N/A

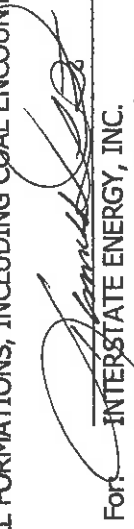
Is coal being mined in area (Y/N)? N
Coal Depths (ft.): _____ N/A

OPEN FLOW DATA

Producing formation: Fifth Sand Pay zone depth (ft.) 2664'-2807'
Gas: Initial open flow: MCF/d Oil: Initial open flow: Bbl/d
Final open flow: 531 MCF/d Final open flow: N/A Bbl/d
Time of open flow between initial and final tests: _____ Hours
Static Rock Pressure: 865 psig (surface pressure) after 72 Hours
Second producing formation: Berea and Gordon Pay zone depth (ft.) 2269'-2488'
Gas: Initial open flow: MCF/d Oil: Initial open flow: Bbl/d
Final open flow: * MCF/d Final open flow: Bbl/d
Time of open flow between initial and final tests: _____ Hours
Static Rock Pressure: _____ psig (surface pressure) after _____ Hours

*Co-mingled w/First Stage.

NOTE: ON BACK OF THIS FORM PUT THE FOLLOWING: 1). DETAILS OF PERFORATED INTERVALS, FRACTURING OR STIMULATING, PHYSICAL CHANGE, ETC. 2). THE WELL LOG WHICH IS A SYSTEMATIC DETAILED GEOLOGICAL RECORD OF ALL FORMATIONS, INCLUDING COAL ENCOUNTERED BY THE WELLBORE.

For: 
INTERSTATE ENERGY, INC.

By: Kenneth L. Pote, President
Date: January 29, 1999

FEB 08 1999

Dodo 4489

Casing & Tubing Size	Used in Drilling	Left in Well	Cement Fill Up Cu. Ft.
16"	13'	0'	
11-3/4"	44.00'	44.00'	
8-5/8"	839.00'	839.00'	225 Sks.
4-1/2"		2916.45'	230 Sks.

RECEIVED
Office of Oil & Gas
Permitting
FEB 01 1999
WV Division of
Environmental Protection

Interstate Energy, Inc.
 Harvey #1
 47-017-04489

Details of Perforated Intervals, Fracturing or Stimulating, Physical Change
 Fifth Sand 2664'-2807'; 10 Holes; 5,000# 80/100; 16,200# 20/40; 242 Bbls. S/L Fluid
 Berea and 2269'-2488'; 14 Holes; 5,000# 80/100; 20,200# 20/40; 300 Bbls. S/L Fluid
 Gordon 2080'-2102'; 12 Holes; 5,000# 80/100; 17,900# 20/40; 269 Bbls. S/L Fluid
 Weir

Well Log

Record of Regular Formations

Formation	Color	Hard or Soft	Top	Bottom	Remarks
KB-Gl			0'	10'	1/2" Stream H2O @ 5'
Brown Sand		Soft	10'	20'	
Sand	Gray	Hard	20'	147'	3/4" Stream H2O @ 25'
Red Rock and Shale	Rd-Gr	Medium	147'	343'	
Sand and Shale	Gray	Hard	343'	437'	
Red Rock and Shale	Gray	Medium	437'	451'	
Sand	Gray	Hard	451'	490'	
Sand, Shale and Red Rock	Rd-Gr	Medium	490'	580'	
Sand	Gray	Hard	580'	640'	
Sand and Shale	Gray	Medium	640'	995'	
Sand	Gray	Hard	995'	1015'	
Sand and Shale	Gray	Medium	1015'	1065'	
Sand	Gray	Hard	1065'	1103'	
Sand and Shale	Gray	Medium	1103'	1285'	
Sand	Gray	Hard	1285'	1317'	
Sand and Shale	Gray	Hard	1317'	1372'	
Sand and Shale	Gr-Wh	Medium	1372'	1503'	
Sand	Gray	Hard	1372'	1503'	
Sand and Shale	Gray	Medium	1503'	1594'	
Sand	White	Hard	1594'	1653'	
Sand, Shale and Red Rock	Gr-Rd	Medium	1653'	1798'	
L. Lime	Gray	Hard	1798'	1826'	
Sand and Shale	Gray	Medium	1826'	1838'	
B. Lime	Gray	Hard	1838'	1985'	Gas Ck. @ 1935' - N/S
Sand and Shale	Gray	Medium	1985'	2075'	Gas Ck. @ 1998' - N/S
Weir	Dk Gr	Medium	2075'	2105'	Gas Ck. @ 2092' - N/S
Sand and Shale	Gray	Medium	2105'	2271'	
Berea	Gray	Medium	2271'	2275'	
Sand and Shale	Gray	Medium	2275'	2798'	Gas Ck. @ 2307' - N/S Gas Ck. @ 2523' - N/S
Fifth Sand	Gray	Hard	2798'	2832'	Gas Ck. @ 2830' - N/S
Sand and Shale	Gray	Medium	2832'	2985'	
Total Depth			2985'		Gas Ck. @ TD - N/S Gas Ck. @ DC - N/S