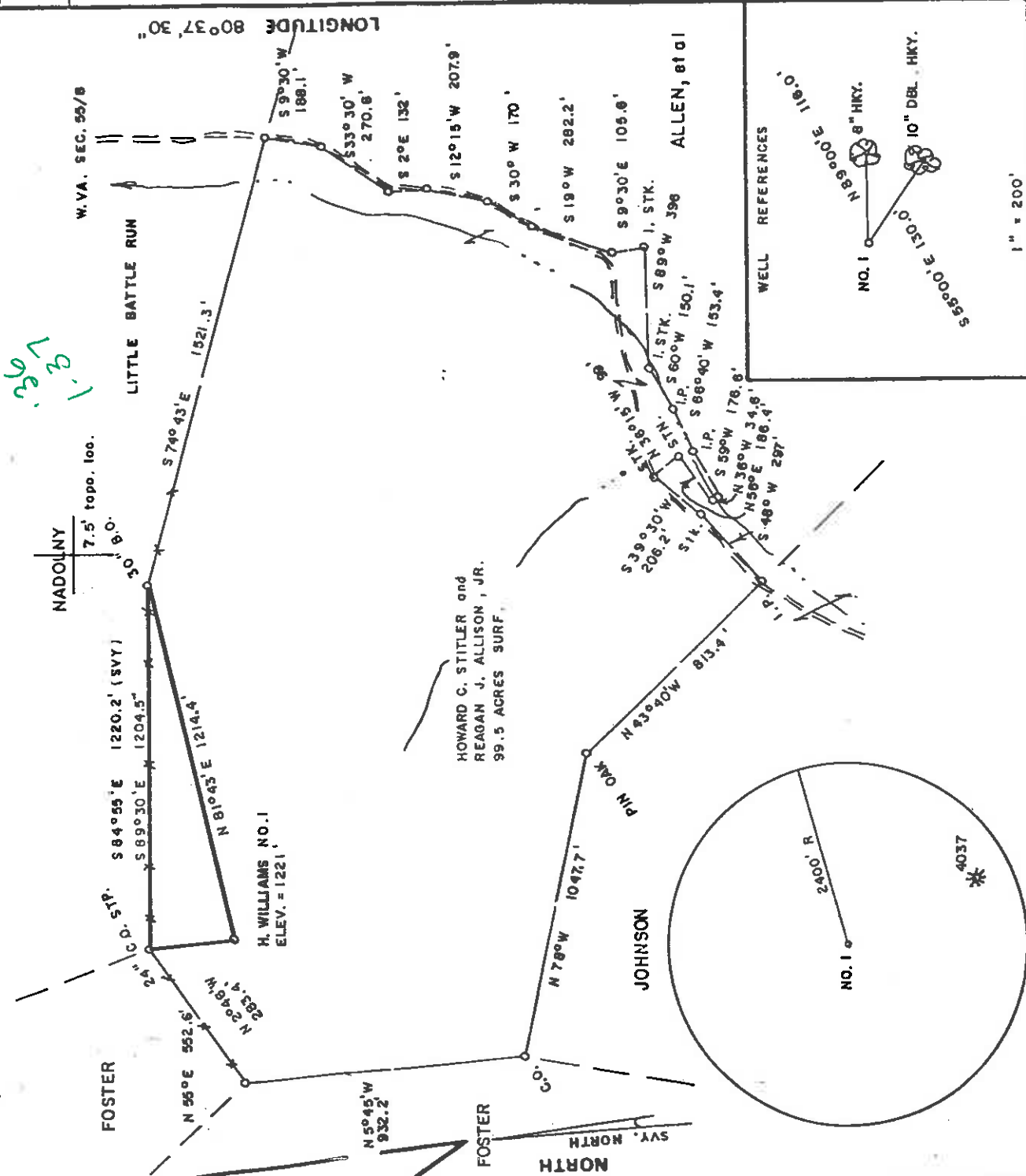


HAROLD WILLIAMS LEASE 99.5 AC.



7.5' topo. loc.
NADOLNY
9.0'

7.5' topo. loc.
9.0'

7.5' topo. loc.
9.0'

7.5' topo. loc.
9.0'

7.5' topo. loc.
9.0'



I, THE UNDERSIGNED, HEREBY CERTIFY THAT THIS PLAT IS CORRECT TO THE BEST OF MY KNOWLEDGE AND BELIEF AND SHOWS ALL THE INFORMATION REQUIRED BY LAW AND THE REGULATIONS ISSUED AND PRESCRIBED BY THE DEPARTMENT OF MINES.

Mark C. Echard
MARK C. ECHARD
(SIGNED)

R.P.E. _____ L.L.S. 490

FILE NO. _____
DRAWING NO. _____
SCALE 1" = 500'
MINIMUM DEGREE OF ACCURACY 1/200
PROVEN SOURCE OF ELEVATION JCT OF ROADS
SOUTH OF LEASE ELEV. = 1184'

DATE JULY 27, 19 98
OPERATOR'S WELL NO. H. WILLIAMS NO. 1
API WELL NO. 47-017-04455
STATE COUNTY PERMIT

WEST VIRGINIA
DIVISION OF ENVIRONMENTAL PROTECTION
OFFICE OF OIL AND GAS
#10 McJUNKIN ROAD
NITRO, WEST VIRGINIA 25143-2506

WELL TYPE: OIL GAS LIQUID INJECTION WASTE DISPOSAL
(IF "GAS,") PRODUCTION STORAGE DEEP SHALLOW
LOCATION: ELEVATION 1221' WATER SHED LITTLE BATTLE RUN
DISTRICT McCLULLAN COUNTY DUDDY
QUADRANGLE SMITHBURG 7.5'
SURFACE OWNER HOWARD C. STITLER and REAGAN J. ALLISON, JR. ACREAGE 99.5
OIL & GAS ROYALTY OWNER HAROLD P. WILLIAMS, et al LEASE ACREAGE 99.5

PROPOSED WORK: DRILL CONVERT DRILL DEEPER REDRILL FRACTURE OR STIMULATE PLUG OFF OLD FORMATION PERFORATE NEW FORMATION OTHER PHYSICAL CHANGE IN WELL (SPECIFY) _____

LEASE NO. _____

PLUG AND ABANDON CLEAN OUT AND REPLUG
TARGET FORMATION BENSON ESTIMATED DEPTH 5200'
WELL OPERATOR D.A.C. DESIGNATED AGENT KENNETH R. MASON
ADDRESS P.O. BOX 99 ALMA, WV 26320

8-21-98

579536 BLS BLUEPRINT Huntington, W V

State of West Virginia
Division of Environmental Protection
Section of Oil and Gas

Well Operator's Report of Well Work

Farm Name: Williams H. P.
Location: Elevation: 1221'
District: West Union
Latitude: 1900 Feet South of
Longitude: 7200 Feet West of

Operators Well No. Williams #1
Quadrangle: Smithburg 7.5'
County: Doddridge
39 Deg. 22 min. 30sec.
80 Deg. 37 min. 30sec.

Company: Drilling Appalachian Corp
P. O. Box 99
Alma, WV 26320

Agent: Kenneth Mason

Inspector: Mike Underwood
Permit Issued: 05/26/98
Well Work Commenced: 08/07/98
Well Work Completed: 06/12/98

Rotary Cable Rig

Total Depth (feet) 5561'
Fresh Water Depths (ft) 175'
Salt Water Depths (ft) 1656'
Is coal being mined in area (Y/N)
Coal Depths (ft): N/A

casing used in cement
tubing drilling in well fill up sks

11 3/4	160	135	70
8 5/8	1400	1356	325
4 1/2	5321	5308	210

RECEIVED
COUNTY CLERK
DODD RIDGE
OCT 15 1998
WV

OPEN FLOW DATA

Producing formation Benson
Gas: Initial open flow 42 MCF/D
Final open flow 353 MCF/D
Static Rock Pressure 1700

Pay zone depth (ft) 5334-5340
Oil: Initial open flow 0 BBL/D
Final open flow show BBL/D
psig (surface pressure) after 48 Hours

Second producing formation
Gas: Initial open flow * MCF/D
Final open flow * MCF/D
static rock pressure *

Pay zone depth (ft)
Oil: Initial open flow 0 BBL/D
Final open flow 0 BBL/D
psig (surface pressure) after * Hours

For: Drilling Appalachian Corp.

By:



Date: 09-28-98

D000 4455

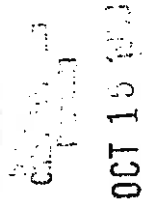
Stage	Formation	Perfs	Sand	N2
09-19-98	Williams #1			
1	Benson	5339-5345 14	200 sks	289,000 scf

ISIP = Screened out
5 min = Screened out

Drillers Log

Electric Log Tops

Formation	Top	Bottom	Formation	Depth top
fill	0	10	Big Lime	2185
Sh	10	70	Big Injun	2248
Sd	70	130	Berea	2768
Sd/Sh	130	215	Gordon	2953
Sd	215	230	Benson	5332
Sh	230	260		
RR	260	294		
Sd/Sh	294	527	1/2" strm @ 175'	
Sd	527	710		
Sd/Sh	710	2155		
Lime	2155	2175		
Sd	2175	2189		
Lime	2189	2265		
Sd	2265	2345	gas ck @ 2193 = no show	
Sh	2345	2970	gas ck @ 2026 = odor	
Sd	2970	3000	gas ck @ 3014 = 14/10 in 1" w/w	
Sd/Sh	3000	5303		
Sd	5303	5305		
Sd/Sh	5305	55561		
TD	5561		gas ck @ TD = 2.5/10 in 1" w/w	



 GUYANA ASSOCIATION OF GEOPHYSICISTS
 OCT 18 1998