

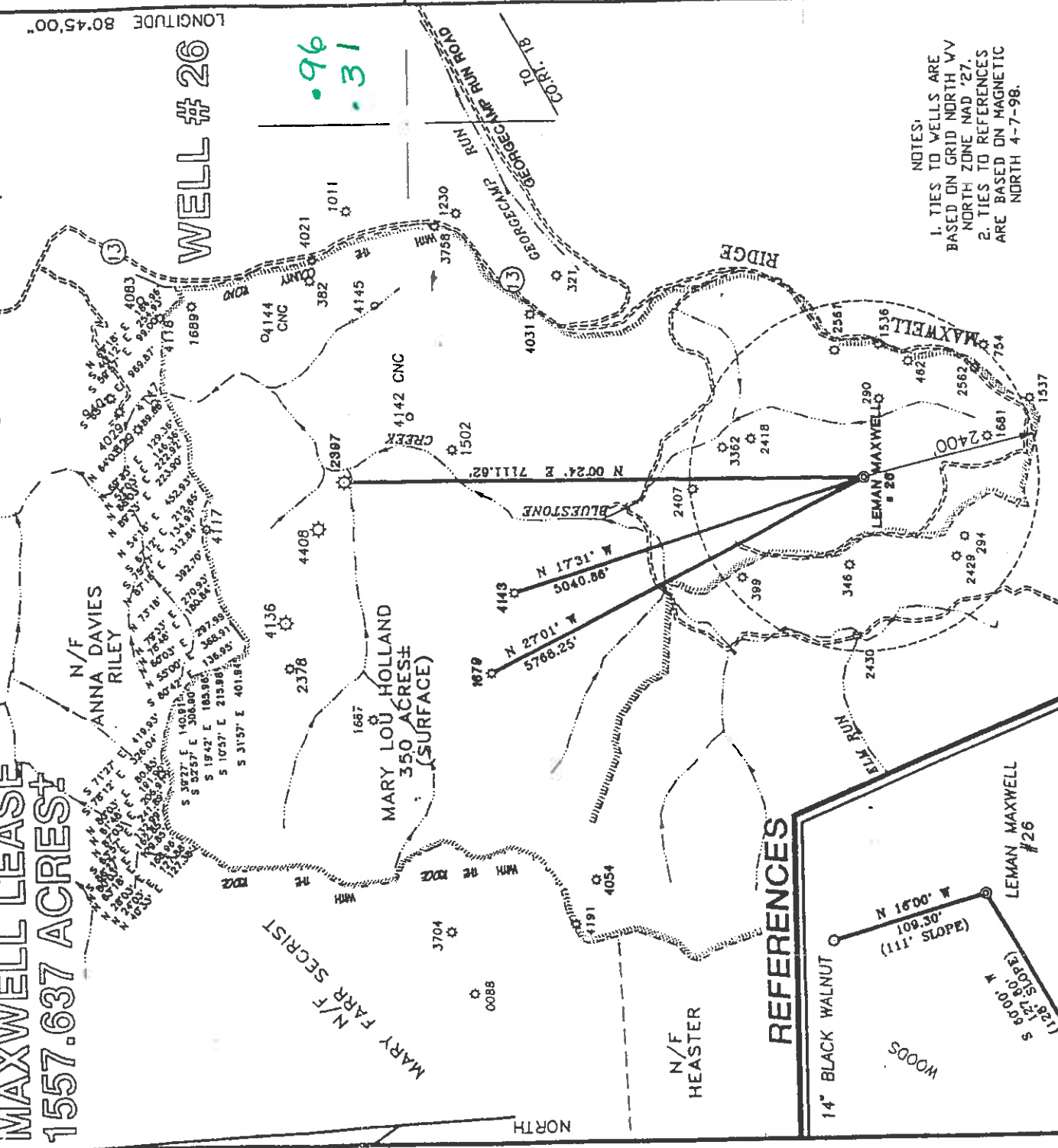
# MAXWELL LEASE 1557.637 ACRES

LATITUDE 39°15'00"

LONGITUDE 80°45'00"

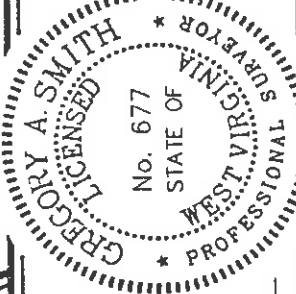
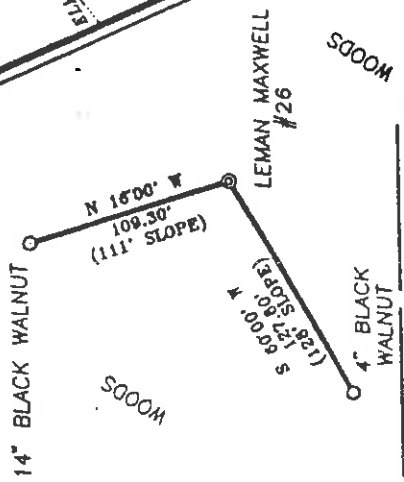
## WELL #26

96  
31



NOTES:  
 1. TIES TO WELLS ARE BASED ON GRID NORTH 'VV NORTH ZONE NAD '27'.  
 2. TIES TO REFERENCES ARE BASED ON MAGNETIC NORTH 4-7-98.

### REFERENCES



I THE UNDERSIGNED, HEREBY CERTIFY THAT THIS PLAN IS CORRECT TO THE BEST OF MY KNOWLEDGE AND BELIEF AND SHOWS ALL THE INFORMATION REQUIRED BY LAW AND THE REGULATIONS ISSUED AND PRESCRIBED BY THE DEPARTMENT OF ENERGY.

P.S. *Gregory A. Smith*  
 677

(+) DENOTES LOCATION OF WELL ON UNITED STATES TOPOGRAPHIC MAPS.  
 DATE APRIL 15, 19 98  
 OPERATORS WELL NO. LEMAN MAXWELL #26  
 API WELL NO. 47-017 STATE WV COUNTY JEFFERSON PERMIT 04447.7

MINIMUM DEGREE OF ACCURACY 1 / 200 FILE NO. 3149P26 (35-19)  
 PROVEN SOURCE OF ELEVATION TOP OF KNOB ELEVATION 1333' SCALE 1" = 2000'

STATE OF WEST VIRGINIA  
 DIVISION OF ENVIRONMENTAL PROTECTION  
 OFFICE OF OIL AND GAS



WELL TYPE : OIL  GAS  INJECTION  WASTE LIQUID  DISPOSAL  "GAS" PRODUCTION  STORAGE  DEEP  SHALLOW

LOCATION : ELEVATION 1033' WATERSHED TRIBUTARY OF BLUESTONE CREEK  
 DISTRICT WEST UNION COUNTY DODDRIDGE QUADRANGLE OXFORD-7.5'  
 SURFACE OWNER MARY LOU HOLLAND ACREAGE 1557.637  
 ROYALTY OWNER MARY LOU HOLLAND ET AL. LEASE ACREAGE 1557.637 LEASE NO. \_\_\_\_\_

PROPOSED WORK :  
 DRILL  CONVERT  DRILL DEEPER  REDRILL  FRACTURE OR STIMULATE  PLUG OFF OLD FORMATION  PERFORATE NEW FORMATION  PLUG AND ABANDON  CLEAN OUT AND REPLUG  OTHER ALEXANDER  
 PHYSICAL CHANGE IN WELL (SPECIFY) \_\_\_\_\_ TARGET FORMATION \_\_\_\_\_ ESTIMATED DEPTH 5500'

WELL OPERATOR ANVIL OIL COMPANY DESIGNATED AGENT JUSTIN M. HENDERSON  
 ADDRESS P.O. BOX 1230 FAIRMONT, WV 26554-1230 ADDRESS P.O. BOX 427 WEST UNION, WV 26456

DODD 4447-F

*(Straight Ft. - 133) 6-6*

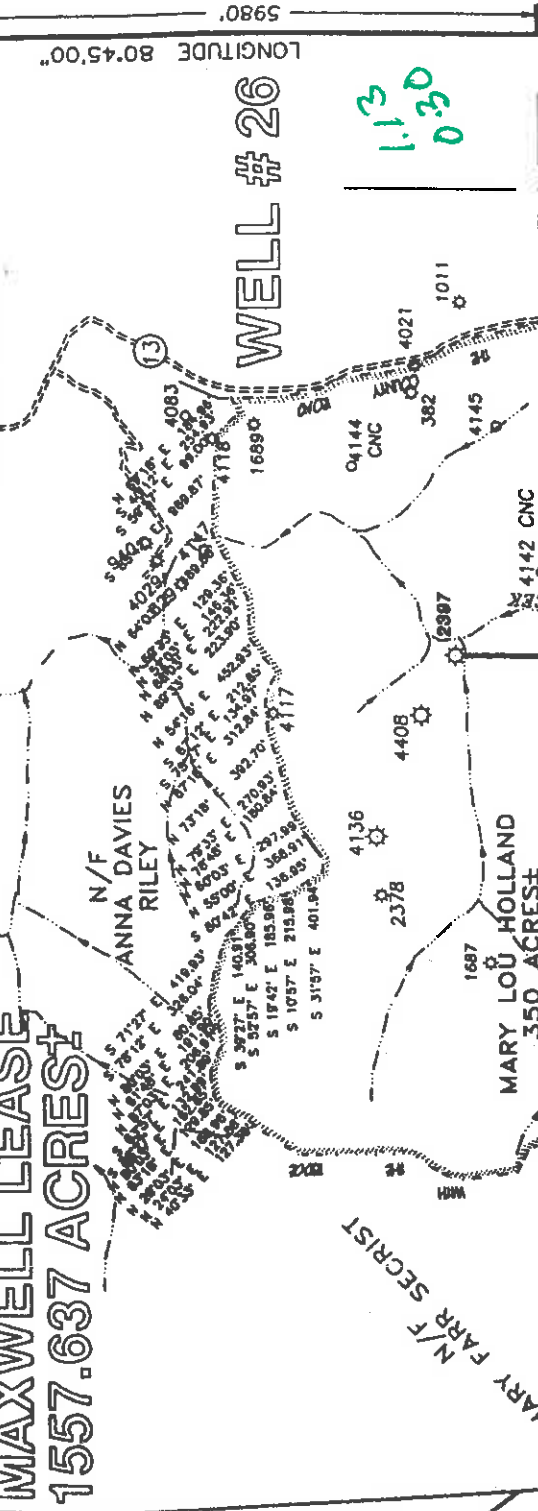
# MAXWELL LEASE 1557.637 ACRES

LATITUDE 39°15'00"

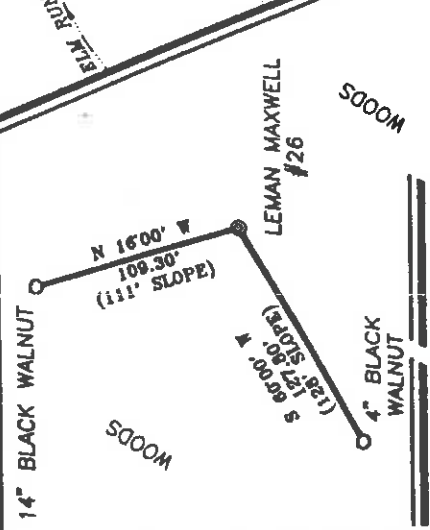
LONGITUDE 80°45'00"

## WELL # 26

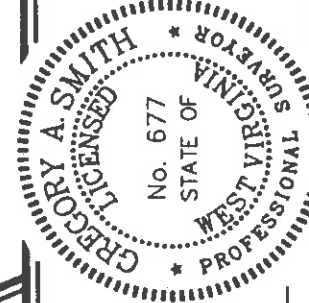
1130  
030



### REFERENCES



NOTES:  
1. TIES TO WELLS ARE  
BASED ON GRID NORTH WV  
NORTH ZONE NAD '27.  
2. TIES TO REFERENCES  
ARE BASED ON MAGNETIC  
NORTH 4-7-98.



I THE UNDERSIGNED, HEREBY CERTIFY THAT THIS PLAT IS CORRECT TO THE BEST OF MY KNOWLEDGE AND BELIEF AND SHOWS ALL THE INFORMATION REQUIRED BY LAW AND THE REGULATIONS ISSUED AND PRESCRIBED BY THE DEPARTMENT OF ENERGY.

P.S. *Gregory A. Smith*  
677

(+) DENOTES LOCATION OF WELL ON UNITED STATES TOPOGRAPHIC MAPS.

DATE APRIL 15, 19 98  
OPERATORS WELL NO. LEMAN MAXWELL #26  
API WELL NO. 47-017-04447  
STATE COUNTY PERMIT

MINIMUM DEGREE OF ACCURACY 1 / 200 FILE NO. 3149P26 (35-19)  
SCALE 1" = 2000'  
PROVEN SOURCE OF ELEVATION TOP OF KNOB ELEVATION 1333'

STATE OF WEST VIRGINIA  
DIVISION OF ENVIRONMENTAL PROTECTION  
OFFICE OF OIL AND GAS

WELL TYPE : OIL  LIQUID WASTE  GAS  INJECTION  DISPOSAL  "GAS" PRODUCTION  STORAGE  DEEP  SHALLOW

LOCATION :  
ELEVATION 1033'  
DISTRICT WEST UNION COUNTY DODDRIDGE QUADRANGLE OXFORD-7.5'  
SURFACE OWNER MARY LOU HOLLAND ACREAGE 1557.637  
ROYALTY OWNER MARY LOU HOLLAND ET AL. LEASE ACREAGE 1557.637  
PROPOSED WORK :  
DRILL  CONVERT  DRILL DEEPER  REDRILL  FRACTURE OR STIMULATE  PLUG OFF OLD FORMATION  PERFORATE NEW FORMATION  PLUG AND ABANDON  CLEAN OUT AND REPLUG  OTHER ALEXANDER  
PHYSICAL CHANGE IN WELL (SPECIFY) TARGET FORMATION ESTIMATED DEPTH 5500'

WELL OPERATOR ANVIL OIL COMPANY DESIGNATED AGENT JUSTIN M. HENDERSON  
ADDRESS P.O. BOX 1230 FAIRMONT, WV 26554-1230 ADDRESS P.O. BOX 427 WEST UNION, WV 26456

0000 4447

6-6-133



WR-35  
Rev (5-01)

DATE: API #: 47-017-04447 F2

State of West Virginia  
Department of Environmental Protection  
Office of Oil and Gas

Well Operator's Report of Well Work

Farm name: Holland Mary Co Operator Well No.: L Maxwell 26

LOCATION: Elevation: 1,139 Quadrangle: Oxford

District: West Union County: Doddridge  
Latitude: 31.70 Feet South of 39 Deg. 15 Min. 0 Sec.  
Longitude 122.0 Feet West of 80 Deg. 45 Min. 0 Sec.

Company: Amal Oil & Gas Co  
PO Box 1230

Address:	Casing & Tubing	Used in drilling	Left in well	Cement fill up Cu. Ft.
<u>Fairmont W 2655</u>				
Agent: <u>Justin Henderson</u>				
Inspector: <u>Mike Underwood</u>				
Date Permit Issued: <u>8/18</u>				
Date Well Work Commenced:				
Date Well Work Completed:				
Verbal Plugging:				
Date Permission granted on: <u>4/12</u>				
Rotary Cable Rig				
Total Depth (feet):				
Fresh Water Depth (ft.):				
Salt Water Depth (ft.):				
Is coal being mined in area (N/Y)?				
Coal Depths (ft.):				

OPEN FLOW DATA

Producing formation \_\_\_\_\_ Pay zone depth (ft) \_\_\_\_\_  
Gas: Initial open flow \_\_\_\_\_ MCF/d Oil: Initial open flow \_\_\_\_\_ Bbl/d  
Final open flow \_\_\_\_\_ MCF/d Final open flow \_\_\_\_\_ Bbl/d  
Time of open flow between initial and final tests \_\_\_\_\_ Hours  
Static rock Pressure \_\_\_\_\_ psig (surface pressure) after \_\_\_\_\_ Hours

Second producing formation \_\_\_\_\_ Pay zone depth (ft) \_\_\_\_\_  
Gas: Initial open flow \_\_\_\_\_ MCF/d Oil: Initial open flow \_\_\_\_\_ Bbl/d  
Final open flow \_\_\_\_\_ MCF/d Final open flow \_\_\_\_\_ Bbl/d  
Time of open flow between initial and final tests \_\_\_\_\_ Hours  
Static rock Pressure \_\_\_\_\_ psig (surface pressure) after \_\_\_\_\_ Hours

NOTE: ON BACK OF THIS FORM PUT THE FOLLOWING: 1). DETAILS OF PERFORMED INTERVALS, FRACTURING OR STIMULATING, PHYSICAL CHANGE, ETC. 2). THE WELL LOG WHICH IS A SYSTEMATIC DETAILED GEOLOGICAL RECORD OF ALL FORMATIONS, INCLUDING COAL ENCOUNTERED BY THE WELLBORE.

Signed: Amal Oil & Gas  
By: Justin Henderson  
Date: \_\_\_\_\_

RECEIVED  
Office of Oil & Gas

MAY 13 2009

AUG 07 2009 WV Department of Environmental Protection

Gordon - Perf 2126-2310  
8holes

Frac 190 bbls H<sub>2</sub>O

27,000 # Sand

500 acid

288,000 SFN<sub>2</sub>

Injun - Perf

1765-1840

Frac 801 bbls H<sub>2</sub>O

71,000 # Sand

1000 gals acid

198,000 SFN<sub>2</sub>

EXCEL ENERGY, INC.

842 6936

P.01

RECEIVED  
Office of Oil & Gas  
Permitting

JUN 06 2000

WV Division of  
Environmental Protection

State of West Virginia  
Division of Environmental Protection  
Section of Oil and Gas

No. 47-017-4447-4  
Reviewed 18

Well Operator's Report of Well Work

Well Name: HOLLAND, HARRY 100

Operator Well No.: L. MAXWELL #26

LOCATION: Elevation: 1,139.00 Quadrangle: OXFORD

District: WEST UNION  
Latitude: 2170 Feet South of 39 Deg. 15Min. 0 Sec.  
Longitude: 1220 Feet West of 80 Deg. 45 Min. 0 Sec.

County: DODDRIDGE  
Deg. 15Min. 0 Sec.  
Deg. 45 Min. 0 Sec.

Company: ANVIL OIL CO., INC.

P. O. BOX 1730  
FAIRMONT, WV 26554-1730

Agent: JUSTIN L. BENDERSON

Inspector: MIKE UNDERWOOD  
Permit Issued: 08/04/98  
Well work Commenced: 07/11/98  
Well work Completed: 07/18/98  
Verbal Plugging  
Permission granted out: fly  
Rotary Cable: fly  
Total Depth (feet): 5138'  
Fresh water depths (ft): 130  
Salt water depths (ft): None

Is coal being mined in area (Y/N)? N  
Coal Depth (ft): None

OPEN FLOW DATA

Producing formation: Alex, Benson, Baltown  
Gas: Initial open flow: 100 MCF/d Oil: Initial open flow: 3016' - 5005'  
Final open flow: 847 MCF/d Final open flow: 80  
Time of open flow between initial and final tests: 1600 psig (surface pressure) after 72 ho  
Static rock Pressure: 1600 psig (surface pressure) after 72 ho  
Second producing formation: HCF/d Oil: Pay zone depth (ft) 5060'  
Gas: Initial open flow: HCF/d Oil: Initial open flow: 80  
Final open flow: HCF/d Final open flow: 80  
Time of open flow between initial and final tests: 1600 psig (surface pressure) after 72 ho  
Static rock Pressure: 1600 psig (surface pressure) after 72 ho

NOTE: ON BACK OF THIS FORM PUT THE FOLLOWING: 1). DETAILS OF PERFORM INTERVALS, FRACTURING OR STIMULATING, PHYSICAL CHANGE, ETC. 2). THE W LOG WHICH IS A SYSTEMATIC DETAILED GEOLOGICAL RECORD OF ALL FORMATION INCLUDING COAL ENCOUNTERED BY THE WELLBORE.

ANVIL OIL CO., INC.

By: H.L. Barnett, H.L. Barnett, Consultant  
Date: July 28, 1999

0000 4447 F

JUN 9 2000



FORM 14-75  
(REVISE)

DETAILS OF PERFORMED SERVICES, FIVE-DIGITS ON STRIPPER, PHYSICAL, CIVIL, ETC.

Alex (4946'-5000') 20 holes, fraced using 173 bbls water, 500 gal acid, 35,000# sand and 363,000 SCF N2.  
 Benson (4656'-4664') 15 holes, fraced using 155 gals water, 1000 gal acid, 35,000# sand and 350,000 SCF N2.  
 Balltown (3743'-4220') 13 holes, fraced using 150 bbls water, 750 gal acid, 27,000# sand and 310,000 SCF N2.  
 Speecheley (3016'-3137') 20 holes, fraced using, 156 bbls water, 500 gal acid, 38,000# sand and 312,000 SCF N2.  
 (NET 100)

Drillers Log

Electric Log Tops

Formation	Top	Bottom	Formation	Depthtop
Dirt	0	10		
Clay	10	20	Big Lime	1593
Sd/Sh	20	295	Berea	2092
Sd	295	315	Gordon	2281
Sd/Sh	315	870	Benson	4608
Sh	870	1567		
Sand	1567	1590		
Lime	1590	1645		
Sand	1645	1792		
Sd/Sh	1792	2310		
Sd	2310	2320		
Sd/Sh	2320	4595		
Sd	4595	4605		
Sd/Sh	4605	5138		
Td	5138	5138		