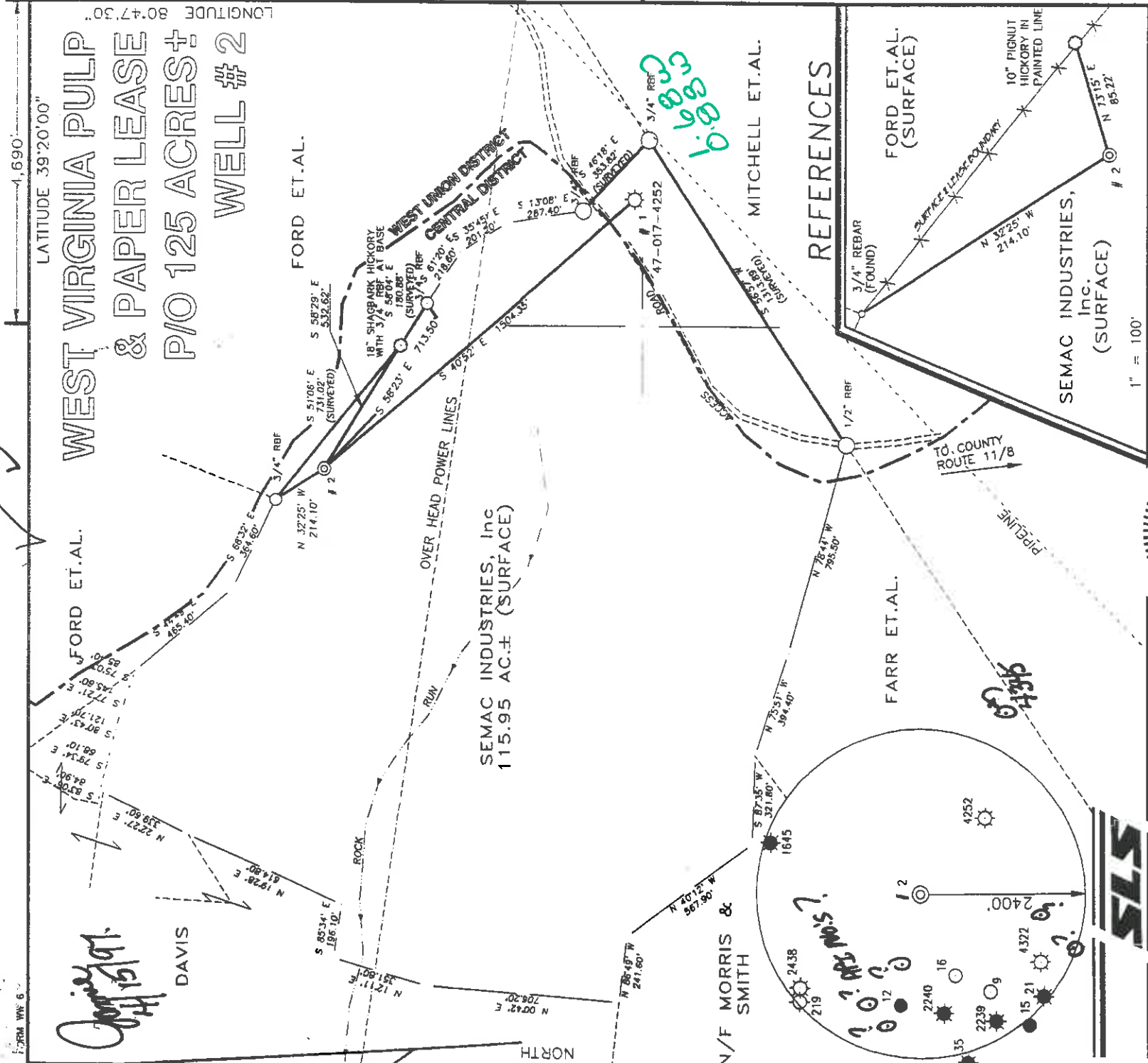
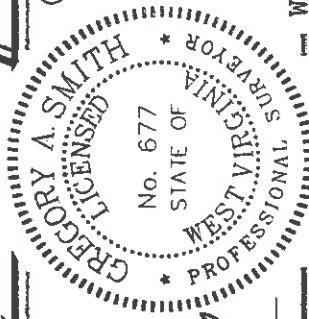


FORM WV 6 1,690' LATITUDE 39°20'00" LONGITUDE 80°47'30"

WEST VIRGINIA PULP & PAPER LEASE P/O 125 ACRES± WELL #2



I THE UNDERSIGNED, HEREBY CERTIFY THAT THIS PLAT IS CORRECT TO THE BEST OF MY KNOWLEDGE AND BELIEF AND SHOWS ALL THE INFORMATION REQUIRED BY LAW AND THE REGULATIONS ISSUED AND PRESCRIBED BY THE DEPARTMENT OF ENERGY.



P.S. *Gregory A. Smith*
677

MINIMUM DEGREE OF ACCURACY 1 / 200 FILE NO. 3465P2 (60-16)
PROVEN SOURCE OF ELEVATION TOP OF KNOB ELEVATION 1268' SCALE 1" = 500'

WELL TYPE : OIL GAS INJECTION WASTE DISPOSAL "GAS" PRODUCTION STORAGE DEEP SHALLOW

LOCATION : ELEVATION 1196' WATERSHED ROCK RUN OF ARNOLD CREEK
DISTRICT CENTRAL COUNTY DODDRIDGE QUADRANGLE WEST UNION 7.5'
SURFACE OWNER SEMAC INDUSTRIES, Inc. ACREAGE 115.95 OF 125
ROYALTY OWNER GLENVA MURRAY ET.AL. LEASE ACREAGE 125
PROPOSED WORK : LEASE NO. _____
DRILL CONVERT DRILL DEEPER REDRILL FRACTURE OR STIMULATE PLUG OFF OLD
FORMATION PERFORATE NEW FORMATION PLUG AND ABANDON CLEAN OUT AND REPLUG OTHER
PHYSICAL CHANGE IN WELL (SPECIFY) _____ TARGET FORMATION ALEXANDER
ESTIMATED DEPTH 5400'

WELL OPERATOR MURVIN & MEIER OIL Co. **5868** DESIGNATED AGENT P. NATHAN BOWLES, JR.
ADDRESS P.O. BOX 396 OLNEY, IL 62450

PERMIT **APD 2-1-1007**
ADDRESS P.O. BOX 1386 CHARLESTON, WV 25325

(+) DENOTES LOCATION OF WELL ON UNITED STATES TOPOGRAPHIC MAPS.
DATE FEBRUARY 7, 19 97
OPERATORS WELL NO. W.V. PULP & PAPER # 2

API WELL NO. 47 STATE 47 COUNTY 017-04349 PERMIT

WEST VIRGINIA DIVISION OF ENVIRONMENTAL PROTECTION OFFICE OF OIL AND GAS #10 McJUNKIN ROAD NITRO, WEST VIRGINIA 25143-2506

REFERENCES

FORD ET.AL. (SURFACE)
MITCHELL ET.AL.
FARR ET.AL.
SEMAC INDUSTRIES, Inc. (SURFACE)
10" PIGNUT HICKORY IN PAINTED LINE
SURFACE ELLIPSE BOUNDARY
3/4" REBAR (FOUND)
3/4" REF. 47-017-4252
1/2" REF.
TO COUNTY ROUTE 11/8
PIPELINE.



Gregory A. Smith
1/15/97

DAVIS

N/F MORRIS & SMITH

SEMAC INDUSTRIES, Inc
115.95 AC.± (SURFACE)

FORD ET.AL.

FARR ET.AL.

SEMAC INDUSTRIES, Inc. (SURFACE)

FARR ET.AL.

N/F MORRIS & SMITH

N/F MORRIS & SMITH

SEMAC INDUSTRIES, Inc
115.95 AC.± (SURFACE)

FORD ET.AL.

FARR ET.AL.

SEMAC INDUSTRIES, Inc. (SURFACE)

FARR ET.AL.

N/F MORRIS & SMITH

N/F MORRIS & SMITH

SEMAC INDUSTRIES, Inc
115.95 AC.± (SURFACE)

FORD ET.AL.

FARR ET.AL.

SEMAC INDUSTRIES, Inc. (SURFACE)

FARR ET.AL.

N/F MORRIS & SMITH

N/F MORRIS & SMITH

SEMAC INDUSTRIES, Inc
115.95 AC.± (SURFACE)

FORD ET.AL.

FARR ET.AL.

SEMAC INDUSTRIES, Inc. (SURFACE)

FARR ET.AL.

N/F MORRIS & SMITH

N/F MORRIS & SMITH

SEMAC INDUSTRIES, Inc
115.95 AC.± (SURFACE)

FORD ET.AL.

FARR ET.AL.

SEMAC INDUSTRIES, Inc. (SURFACE)

FARR ET.AL.

N/F MORRIS & SMITH

N/F MORRIS & SMITH

SEMAC INDUSTRIES, Inc
115.95 AC.± (SURFACE)

FORD ET.AL.

FARR ET.AL.

SEMAC INDUSTRIES, Inc. (SURFACE)

FARR ET.AL.

N/F MORRIS & SMITH

N/F MORRIS & SMITH

SEMAC INDUSTRIES, Inc
115.95 AC.± (SURFACE)

FORD ET.AL.

FARR ET.AL.

SEMAC INDUSTRIES, Inc. (SURFACE)

FARR ET.AL.

N/F MORRIS & SMITH

N/F MORRIS & SMITH

SEMAC INDUSTRIES, Inc
115.95 AC.± (SURFACE)

FORD ET.AL.

FARR ET.AL.

SEMAC INDUSTRIES, Inc. (SURFACE)

FARR ET.AL.

N/F MORRIS & SMITH

N/F MORRIS & SMITH

SEMAC INDUSTRIES, Inc
115.95 AC.± (SURFACE)

FORD ET.AL.

FARR ET.AL.

SEMAC INDUSTRIES, Inc. (SURFACE)

FARR ET.AL.

N/F MORRIS & SMITH

N/F MORRIS & SMITH

SEMAC INDUSTRIES, Inc
115.95 AC.± (SURFACE)

FORD ET.AL.

FARR ET.AL.

SEMAC INDUSTRIES, Inc. (SURFACE)

FARR ET.AL.

N/F MORRIS & SMITH

N/F MORRIS & SMITH

SEMAC INDUSTRIES, Inc
115.95 AC.± (SURFACE)

FORD ET.AL.

FARR ET.AL.

SEMAC INDUSTRIES, Inc. (SURFACE)

FARR ET.AL.

N/F MORRIS & SMITH

N/F MORRIS & SMITH

SEMAC INDUSTRIES, Inc
115.95 AC.± (SURFACE)

FORD ET.AL.

FARR ET.AL.

SEMAC INDUSTRIES, Inc. (SURFACE)

FARR ET.AL.

N/F MORRIS & SMITH

N/F MORRIS & SMITH

SEMAC INDUSTRIES, Inc
115.95 AC.± (SURFACE)

FORD ET.AL.

FARR ET.AL.

SEMAC INDUSTRIES, Inc. (SURFACE)

FARR ET.AL.

N/F MORRIS & SMITH

N/F MORRIS & SMITH

SEMAC INDUSTRIES, Inc
115.95 AC.± (SURFACE)

FORD ET.AL.

FARR ET.AL.

SEMAC INDUSTRIES, Inc. (SURFACE)

FARR ET.AL.

N/F MORRIS & SMITH

N/F MORRIS & SMITH

SEMAC INDUSTRIES, Inc
115.95 AC.± (SURFACE)

FORD ET.AL.

FARR ET.AL.

SEMAC INDUSTRIES, Inc. (SURFACE)

FARR ET.AL.

N/F MORRIS & SMITH

N/F MORRIS & SMITH

SEMAC INDUSTRIES, Inc
115.95 AC.± (SURFACE)

FORD ET.AL.

FARR ET.AL.

SEMAC INDUSTRIES, Inc. (SURFACE)

FARR ET.AL.

N/F MORRIS & SMITH

N/F MORRIS & SMITH

SEMAC INDUSTRIES, Inc
115.95 AC.± (SURFACE)

FORD ET.AL.

FARR ET.AL.

SEMAC INDUSTRIES, Inc. (SURFACE)

FARR ET.AL.

N/F MORRIS & SMITH

N/F MORRIS & SMITH

SEMAC INDUSTRIES, Inc
115.95 AC.± (SURFACE)

FORD ET.AL.

FARR ET.AL.

SEMAC INDUSTRIES, Inc. (SURFACE)

FARR ET.AL.

N/F MORRIS & SMITH

N/F MORRIS & SMITH

SEMAC INDUSTRIES, Inc
115.95 AC.± (SURFACE)

FORD ET.AL.

FARR ET.AL.

SEMAC INDUSTRIES, Inc. (SURFACE)

FARR ET.AL.

N/F MORRIS & SMITH

N/F MORRIS & SMITH

SEMAC INDUSTRIES, Inc
115.95 AC.± (SURFACE)

FORD ET.AL.

FARR ET.AL.

SEMAC INDUSTRIES, Inc. (SURFACE)

FARR ET.AL.

N/F MORRIS & SMITH

N/F MORRIS & SMITH

SEMAC INDUSTRIES, Inc
115.95 AC.± (SURFACE)

FORD ET.AL.

FARR ET.AL.

SEMAC INDUSTRIES, Inc. (SURFACE)

FARR ET.AL.

N/F MORRIS & SMITH

N/F MORRIS & SMITH

SEMAC INDUSTRIES, Inc
115.95 AC.± (SURFACE)

FORD ET.AL.

FARR ET.AL.

SEMAC INDUSTRIES, Inc. (SURFACE)

FARR ET.AL.

N/F MORRIS & SMITH

N/F MORRIS & SMITH

SEMAC INDUSTRIES, Inc
115.95 AC.± (SURFACE)

FORD ET.AL.

FARR ET.AL.

SEMAC INDUSTRIES, Inc. (SURFACE)

FARR ET.AL.

N/F MORRIS & SMITH

N/F MORRIS & SMITH

SEMAC INDUSTRIES, Inc
115.95 AC.± (SURFACE)

FORD ET.AL.

FARR ET.AL.

SEMAC INDUSTRIES, Inc. (SURFACE)

FARR ET.AL.

N/F MORRIS & SMITH

N/F MORRIS & SMITH

SEMAC INDUSTRIES, Inc
115.95 AC.± (SURFACE)

FORD ET.AL.

FARR ET.AL.

SEMAC INDUSTRIES, Inc. (SURFACE)

FARR ET.AL.

N/F MORRIS & SMITH

N/F MORRIS & SMITH

SEMAC INDUSTRIES, Inc
115.95 AC.± (SURFACE)

FORD ET.AL.

FARR ET.AL.

SEMAC INDUSTRIES, Inc. (SURFACE)

FARR ET.AL.

N/F MORRIS & SMITH

N/F MORRIS & SMITH

SEMAC INDUSTRIES, Inc
115.95 AC.± (SURFACE)

FORD ET.AL.

FARR ET.AL.

SEMAC INDUSTRIES, Inc. (SURFACE)

FARR ET.AL.

N/F MORRIS & SMITH

N/F MORRIS & SMITH

SEMAC INDUSTRIES, Inc
115.95 AC.± (SURFACE)

FORD ET.AL.

FARR ET.AL.

SEMAC INDUSTRIES, Inc. (SURFACE)

FARR ET.AL.

N/F MORRIS & SMITH

N/F MORRIS & SMITH

SEMAC INDUSTRIES, Inc
115.95 AC.± (SURFACE)

FORD ET.AL.

FARR ET.AL.

SEMAC INDUSTRIES, Inc. (SURFACE)

FARR ET.AL.

N/F MORRIS & SMITH

N/F MORRIS & SMITH

SEMAC INDUSTRIES, Inc
115.95 AC.± (SURFACE)

FORD ET.AL.

FARR ET.AL.

SEMAC INDUSTRIES, Inc. (SURFACE)

FARR ET.AL.

N/F MORRIS & SMITH

N/F MORRIS & SMITH

SEMAC INDUSTRIES, Inc
115.95 AC.± (SURFACE)

FORD ET.AL.

FARR ET.AL.

SEMAC INDUSTRIES, Inc. (SURFACE)

FARR ET.AL.

N/F MORRIS & SMITH

N/F MORRIS & SMITH

SEMAC INDUSTRIES, Inc
115.95 AC.± (SURFACE)

FORD ET.AL.

FARR ET.AL.

SEMAC INDUSTRIES, Inc. (SURFACE)

FARR ET.AL.

N/F MORRIS & SMITH

N/F MORRIS & SMITH

SEMAC INDUSTRIES, Inc
115.95 AC.± (SURFACE)

FORD ET.AL.

FARR ET.AL.

SEMAC INDUSTRIES, Inc. (SURFACE)

FARR ET.AL.

N/F MORRIS & SMITH

N/F MORRIS & SMITH

SEMAC INDUSTRIES, Inc
115.95 AC.± (SURFACE)

FORD ET.AL.

FARR ET.AL.

SEMAC INDUSTRIES, Inc. (SURFACE)

State of West Virginia
Division of Environmental Protection
Section of Oil and Gas

Well Operator's Report of Well Work

Farm name: SEMAC INDUSTRIES

Operator Well No.: PULP/PAPER #2

LOCATION: Elevation: 1,196.00

Quadrangle: WEST UNION

District: CENTRAL

County: DODDRIDGE

Latitude: 8960

Feet South of 39 Deg. 20 Min. 0 Sec.

Longitude: 4690

Feet West of 80 Deg. 47 Min. 30 Sec.

Company: MURVIN & MEIER OIL COMPANY
130 E. Market, P. O. Box 396
OLNEY, IL 62450-0000

Agent: P. NATHAN BOWLES, JR.

Inspector:

Permit Issued: MIKE UNDERWOODWell Work Commenced: 04/07/97Well Work Completed: 08/12/97Verbal Plugging: 08/27/97

Permission granted on:

Rotary X Cable RigTotal Depth (feet) 5590'Fresh water depths (ft) 106'Salt water depths (ft) Is coal being mined in area (Y / N)? NCoal Depths (ft): None Reported

OPEN FLOW DATA

Producing formation 3rd Riley, Benson, Alexander Pay zone depth (ft) 5008' - 5429'
Gas: Initial open flow show MCF / d Oil: Initial open flow Bbl / d
Final open flow 1,501 MCF / d Oil: Final open flow show Bbl / d
Time of open flow between initial and final tests 4 Hours
Static rock pressure 1075 psig (surface pressure) after 24 HoursSecond producing formation Speechley, Balltown, Riley Pay zone depth (ft) 3472' - 4696'
Gas: Initial open flow show MCF / d Oil: Initial open flow Bbl / d
Final open flow 1501 MCF / d Oil: Final open flow show Bbl / d
Time of open flow between initial and final tests 4 Hours
Static rock pressure 1075 psig (surface pressure) after 24 Hours

NOTE: ON BACK OF THIS FORM PUT THE FOLLOWING: 1). DETAILS OF PERFORATED INTERVALS, FRACTURING OR STIMULATING, PHYSICAL CHANGE, ETC. 2). THE WELL LOG WHICH IS A SYSTEMATIC DETAILED GEOLOGICAL RECORD OF ALL FORMATIONS, INCLUDING COAL ENCOUNTERED BY THE WELLBORE.

For: MURVIN & MEIER OIL CO.

By: Cary Hill Vice President AgentDate: August 29, 1997

SEP 5 1997

Casing & Tubing Size	Used in Drilling	Left in Well	Cement Fill Up Cu. Ft.
8 5/8"	1160	1160	377.6
4 1/2"	5597	5597	654.0

08/26/97: Ran Bond Log and perforated Alexander formations from 5363' to 5419' (21 holes).

Foam frac'd perfs with 430 bbls. fluid, 750 gals. 15% HCL, 60,000 lbs 20/40, and 541 MSCF Nitrogen.

Perforated Third Riley and Benson formations from 5008' to 5097' (10 holes).

Foam frac'd perfs with 230 bbls. fluid, 750 gals. 15% HCL, 30,000 lbs 20/40, and 388 MSCF Nitrogen.

Perforated Riley formation from 4656' to 4696' (14 holes).

Foam frac'd perfs with 322 bbls. fluid, 750 gals. 15% HCL, 10,000 lbs 80/100, 40,000 lbs. 20/40, and 506 MSCF Nitrogen.

Perforated Speechly and Balltown formations from 3472' to 3916' (21 holes).

Foam frac'd perfs with 389 bbls. fluid, 750 gals. 15% HCL, 10,000 lbs 80/100, 40,000 lbs. 20/40, and 442 MSCF Nitrogen.

WELL LOG

FORMATION	TOP	BOTTOM
KB-GL SAND	0	10
SANDY SHALE	10	180
SHALE/R.R.	180	253
SAND	253	399
SHALE/R.R.	399	437
SAND	437	552
SAND/SHALE	552	560
SHALE/R.R.	560	760
SAND	760	826
SANDY SHALE	826	843
RED ROCK	843	962
R.R./SHALE	962	1004
SAND/SHALE	1004	1267
SAND	1267	1422
SHALE	1422	1452
SAND	1452	1468
SAND/SHALE	1468	1503
L. LIME	1503	2050
SHALE	2050	2079
BIG LIME	2079	2085
BIG INJUN	2085	2200
SHALY SAND	2200	2240
WEIR	2240	2406
SHALE	2406	2500
BEREA	2500	2606
SHALY SAND	2606	2620
GORDON	2620	2810
SAND/SHALE	2810	2825
WARREN	2825	3444
SHALE	3444	3534
SPEECHLY	3534	3545
SHALE	3545	3654
BALLTOWN	3654	3858
	2858	4570

SHALE
RILEY
SHALE
BENSON
SHALE
ALEXANDER
SHALE

4570
4632
4700
5088
2102
5334
5428

TOTAL DEPTH

5590

017 4349

4632
4700
5088
5102
5334
5428
5590

SEP 5 1997

STATE OF WEST VIRGINIA
 DIVISION OF ENVIRONMENTAL PROTECTION, OFFICE OF OIL AND GAS
 WELL WORK PERMIT APPLICATION

1) Well Operator: Murvin & Meier Oil Company 5868 34049 (D) 671
 2) Operator's Well Number: West Virginia Pulp & Paper #2 3) Elevation: 1196

Well type: (a) Oil / or Gas X / Drilled 04/07/97
 (b) If Gas: Production X / Expires 04/07/99
 Deep / / Underground Storage
Shallow X /

Proposed Target Formation(s): Warren, Speechly, Balltown, Riley, Benson, Alexander

Proposed Total Depth: 5590 feet

Approximate fresh water strata depths: 55

8) Approximate salt water depths: -
 9) Approximate coal seam depths: -

10) Does land contain coal seams tributary to active mine? Yes / No X /

11) Proposed Well Work: Drill and Complete New Well

12)

CASING AND TUBING PROGRAM

TYPE	SIZE	GRADE	WEIGHT PER FT.	FOOTAGE	FOOTAGE INTERVALS	CEMENT
				FOR DRILLING	LEFT IN WELL	FILL-UP (Cu. ft.)
Conductor	-					
Fresh Water	8 5/8	L.S.	20/23	1145	1145	CTS <u>5868/113</u>
Coal						
Intermediate						<u>0.1K MUD</u>
Production	4 1/2	J/K	10.5	5590	5590	<u>5868/113.2</u>
Tubing						
Liners						

PACKERS : Kind _____
 Sizes _____
 Depths set _____

For Office of Oil and Gas Use Only
 Fee(s) paid: 12 Well Work Permit 12 Reclamation Fund 12 WPCP
 Plat 12 WW-9 12 WW-2B 12 Bond 12 Agent
 (Type)

1) Date: March 11, 1997
2) Operator's well number WV Pulp & Paper #2
3) API Well No: 47 - 017 - 4349
State _____ County _____ Permit _____

STATE OF WEST VIRGINIA - BUREAU OF ENVIRONMENT
DIVISION OF ENVIRONMENTAL PROTECTION
OFFICE OF OIL AND GAS

NOTICE AND APPLICATION FOR A WELL WORK PERMIT

- 4) Surface Owner(s) to be served:
- (a) Name SEMAC Industries 5) (a) Coal Operator:
Address 7100 CR 407 Name N/A
Millersburg, Ohio 44654 Address _____
- (b) Name _____ (b) Coal Owner(s) with Declaration
Address _____ Name Same as surface owner
Address _____
- (c) Name _____ Name _____
Address _____ Address _____
- 6) Inspector Mr. Mike Underwood (c) Coal Lessee with Declaration
Address Rt. 2, Box 135 Name N/A
Salem, West Virginia 26426 Address _____
Telephone (304) - 782-1043

TO THE PERSON(S) NAMED ABOVE TAKE NOTICE THAT:

Included is the lease or leases or other continuing contract or contracts by which I hold the right to extract oil and gas OR

Included is the information required by Chapter 22, Article 6, Section 8(d) of the Code of West Virginia (see page 2)

I certify that as required under chapter 22 of the West Virginia Code I have served copies of this notice and application, a location plat, and accompanying documents pages 1 through 9 on the above named parties, by:

- Personal Service (Affidavit attached)
 Certified Mail (Postmarked postal receipt attached)
 Publication (Notice of Publication attached)

I have read and understand Chapter 22-6 and 38 CSR 11-18, and I agree to the terms and conditions of any permit issued under this application.

I certify under penalty of law that I have personally examined and am familiar with the information submitted on this application form and all attachments, and that based on my inquiry of those individuals immediately responsible for obtaining the information, I believe that the information is true, accurate, and complete.

I am aware that there are significant penalties for submitting false information, including the possibility of fine and imprisonment.

Well Operator Murvin & Meier Oil Company
By: Cathy Hill
Its: Vice President
Address P.O. Box 396
Olney, Illinois 62450

Telephone 618-395-4405

Subscribed and sworn before me this 11th day of March, 1997

My commission expires July 12, 2005

