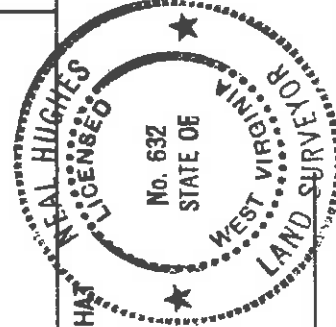
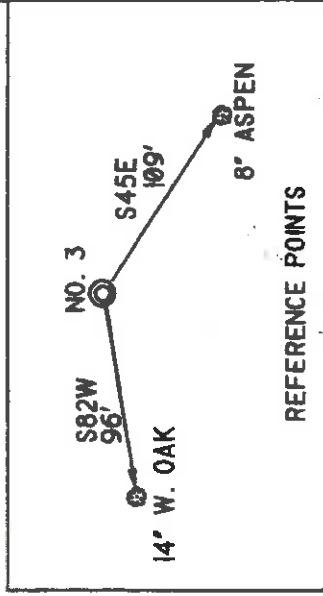
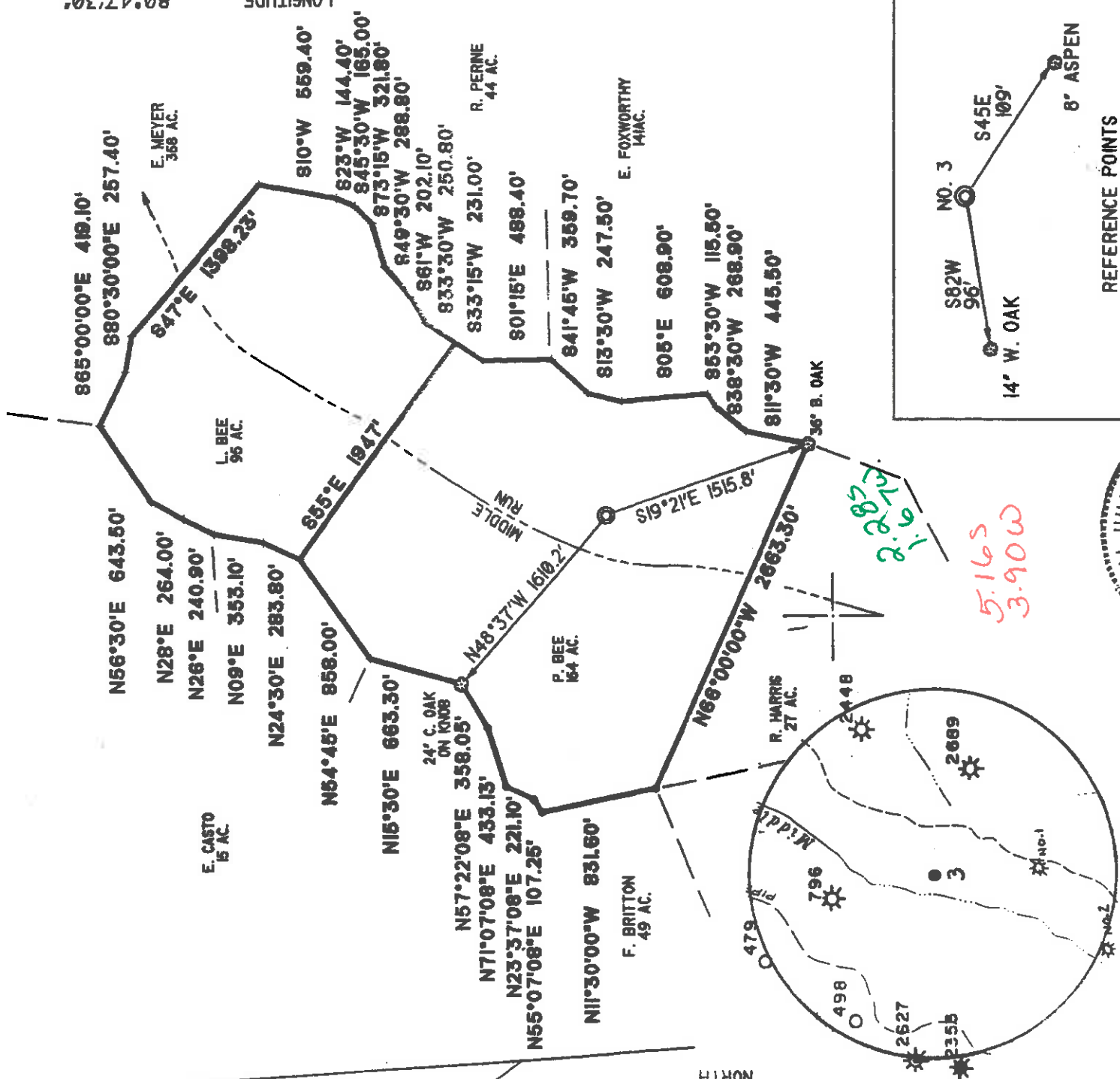


LATITUDE 39°17'30"

9,000'

LONGITUDE 80°47'30"



I, THE UNDERSIGNED, DO HEREBY CERTIFY THAT THIS PLAN IS CORRECT TO THE BEST OF MY KNOWLEDGE AND BELIEF AND SHOWS ALL THE INFORMATION REQUIRED BY LAW AND THE REGULATIONS ISSUED AND PRESCRIBED BY THE DEPARTMENT OF ENERGY.

L.L.S. *Neal Hughes*  
632

(\*) DENOTES LOCATION OF WELL ON UNITED STATES TOPOGRAPHIC MAPS

DATE DEC. 23 19 94  
OPERATORS WELL NO. BEE 3  
API WELL NO. 47 - 017 - 4178  
STATE COUNTY PERMIT

MINIMUM DEGREE OF ACCURACY 1/200  
PROVEN SOURCE OF ELEVATION KNOB 1145'  
FILE NO. 94-74  
SCALE 1"=1000'

STATE OF WEST VIRGINIA  
DEPARTMENT OF ENERGY  
OIL AND GAS DIVISION

WELL TYPE: OIL  GAS  LIQUID INJECTION  WASTE DISPOSAL  'GAS' PRODUCTION  STORAGE  DEEP  SHALLOW   
LOCATION: ELEVATION 930' WATERSHED MIDDLE RUN  
DISTRICT WEST UNION COUNTY DODDRIDGE QUADRANGLE WEST UNION <sup>415</sup> ACREAGE 94  
SURFACE OWNER LEWIS PAUL BEE  
ROYALTY OWNER LIVINGSTON BEE, ET AL LEASE ACREAGE 356.5  
PROPOSED WORK:  
DRILL  CONVERT  DRILL DEEPER  REDRILL  FRACTURE OR STIMULATE  PLUG OFF OLD FORMATION  PERFORATE NEW FORMATION  PLUG AND ABANDON  CLEAN OUT AND REPLUG  OTHER  
PHYSICAL CHANGE IN WELL (SPECIFY) TARGET FORMATION ALEXANDER ESTIMATED DEPTH 5400'

COUNTY NAME WEST UNION  
PERMIT 4178  
WELL OPERATOR KEY OIL CO. 475 DESIGNATED AGENT JAN CHAPMAN  
ADDRESS 22 GARTON PLAZA WESTON, WV 26452

6-6-133

**RECEIVED**  
WV Division of  
Environmental ProtectionState of West Virginia  
Division of Environmental Protection  
Section of Oil and Gas

FEB 15 1995

## Well Operator's Report of Well Work

Farm name: Lewis Paul Bee      Operator Well No.: Bee #3  
Office of Oil & GasLOCATION: Elevation: 930.00      Quadrangle: WEST UNION  
District: WEST UNION      County: DODDRIDGE  
Latitude: 12375 Feet South of 39 Deg. 17Min. 30 Sec.  
Longitude 9000 Feet West of 80 Deg. 47 Min. 30 Sec.Company: KEY OIL COMPANY  
22 GARTON PLAZA  
WESTON, WV 26452-0000

Agent: JAN E. CHAPMAN

Inspector: MIKE UNDERWOOD  
Permit Issued: 12/30/94  
Well work Commenced: 1-26-95  
Well work Completed: 1-31-95  
Verbal Plugging  
Permission granted on: \_\_\_\_\_ Rig  
Rotary X Cable \_\_\_\_\_  
Total Depth (feet) 5277'  
Fresh water depths (ft) \_\_\_\_\_

Salt water depths (ft) 117', 450'

Is coal being mined in area (Y/N)? N  
Coal Depths (ft): -0-

## OPEN FLOW DATA

BALLTOWN  
RILEY  
BENSONProducing formation ALEXANDER  
Gas: Initial open flow -0- MCF/d Oil: MCF/d      Pay zone depth (ft) 5102-5177  
Final open flow 1.517 MCF/d      Initial open flow 0 Bbl/d  
Time of open flow between initial and final tests SHOW Bbl/d  
Static rock Pressure 1700 psig (surface pressure) after 96 HoursSecond producing formation \_\_\_\_\_  
Gas: Initial open flow \_\_\_\_\_ MCF/d Oil: \_\_\_\_\_ MCF/d      Pay zone depth (ft) \_\_\_\_\_  
Final open flow \_\_\_\_\_ MCF/d      Initial open flow \_\_\_\_\_ Bbl/d  
Time of open flow between initial and final tests \_\_\_\_\_ Bbl/d  
Static rock Pressure \_\_\_\_\_ psig (surface pressure) after \_\_\_\_\_ Hours

NOTE: ON BACK OF THIS FORM PUT THE FOLLOWING: 1). DETAILS OF PERFORATED INTERVALS, FRACTURING OR STIMULATING, PHYSICAL CHANGE, ETC. 2). THE WELL LOG WHICH IS A SYSTEMATIC DETAILED, GEOLOGICAL RECORD OF ALL FORMATIONS, INCLUDING COAL ENCOUNTERED BY THE WELLBORE.

For: KEY OIL COMPANY

BY:  PRESIDENT

Date: FEBRUARY 13, 1995

