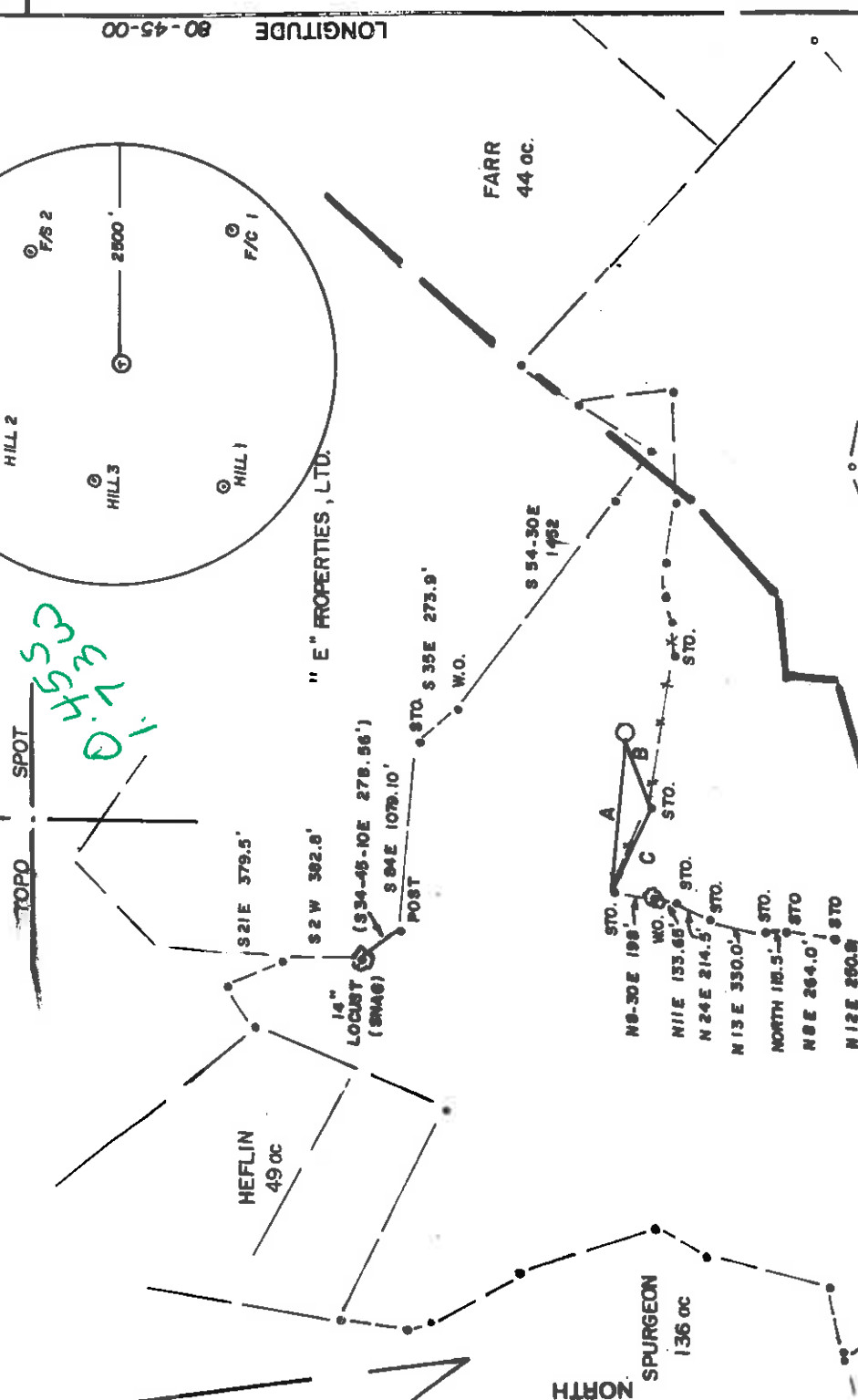
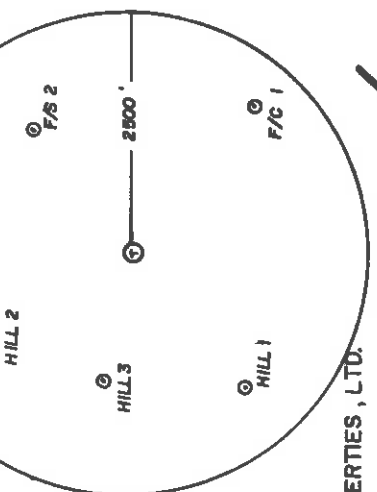


# CHEUVRONT - FARR-3

9150' LATITUDE 39° 17' - 30"  
 2350' LONGITUDE 80-45-00

SPOT  
 TOPO  
 0.7533  
 0.7533  
 0.7533



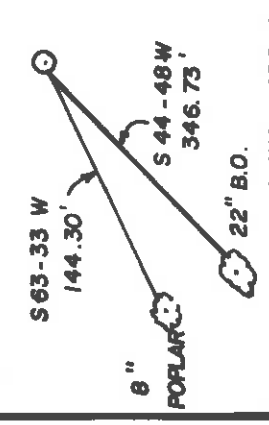
FARR  
44 OC.

- A) S 87-57-00 E 890.40'
- B) S 71-06-50 W 437.59'
- C) N 69-58-00 W 508.45'

8.335  
 1.730

PIERCE  
1498 OC.

### REFERENCES



(+) DENOTES LOCATION OF WELL ON UNITED STATES TOPOGRAPHIC MAPS

FILE NO. \_\_\_\_\_  
 DRAWING NO. \_\_\_\_\_  
 SCALE 1" = 1000'  
 MINIMUM DEGREE OF ACCURACY 1 IN 200  
 PROVEN SOURCE OF ELEVATION B.M. = 866 AT INTER.  
 OF ROADS \_\_\_\_\_

I, THE UNDERSIGNED, HEREBY CERTIFY THAT THIS PLAN IS CORRECT TO THE BEST OF MY KNOWLEDGE AND BELIEF AND SHOWS ALL THE INFORMATION REQUIRED BY LAW AND THE REGULATIONS ISSUED AND PRESCRIBED BY THE DEPARTMENT OF ENERGY.  
 (SIGNED) Robert H. David  
 R.P.E. \_\_\_\_\_ I.L.S. 800

PLACE SEAL HERE

## STATE OF WEST VIRGINIA DEPARTMENT OF ENERGY OIL AND GAS DIVISION



DATE OCTOBER 14, 19 94  
 OPERATOR'S WELL NO. 3 (THREE)  
 API WELL NO. \_\_\_\_\_

WELL TYPE: OIL  GAS  LIQUID INJECTION \_\_\_\_\_ WASTE DISPOSAL \_\_\_\_\_  
 (IF "GAS") PRODUCTION  STORAGE  DEEP  SHALLOW   
 LOCATION: ELEVATION 1032 WATER SHED MIDDLE ISLAND CREEK  
 DISTRICT WEST UNION COUNTY DODDRIDGE  
 QUADRANGLE "E" PROPERTIES LTD. ACREAGE 188  
 SURFACE OWNER \_\_\_\_\_  
 OIL & GAS ROYALTY OWNER CHEUVRONT HEIRS LEASE ACREAGE 194

47-017-04175  
 STATE COUNTY PERMIT

PROPOSED WORK: DRILL  CONVERT  LIQUID INJECTION \_\_\_\_\_ WASTE DISPOSAL \_\_\_\_\_  
 STIMULATE  PLUG OFF OLD FORMATION \_\_\_\_\_ PERFORATE NEW FORMATION  OTHER PHYSICAL CHANGE IN WELL (SPECIFY) \_\_\_\_\_

PLUG AND ABANDON  CLEAN OUT AND REPLUG \_\_\_\_\_  
 TARGET FORMATION ALEXANDER ESTIMATED DEPTH 5500 /  
 WELL OPERATOR RARE EARTH MINERALS, INC DESIGNATED AGENT SAM SPATAFORE  
 ADDRESS PO. BOX 390, CLARKSBURG WV 26101 ADDRESS PO. BOX 390 CLARKSBURG WV

**Doddridge**  
 COUNTY NAME

PERMIT

OCT 17 1996

State of West Virginia  
Division of Environmental Protection  
Section of Oil and Gas

API # 47- 017-04175

06-Jun-96

**Permitting  
Office of Oil & Gas**

Well Operator's Report of Well Work

Farm name: "E" PROPERTIES LTD.

Operator Well No.: CHEVRONT/FARR #3

LOCATION: Elevation: 972.00

Quadrangle: WEST UNION

District: WEST UNION County: DODDRIDGE  
Latitude: 14750 Feet South of 39 Deg. 20Min. 0 Sec.  
Longitude 8500 Feet West of 80 Deg. 45 Min. 0 Sec.

Company: RARE EARTH MINERALS, INC.  
507 BALTIMORE AVE., P.O. BX 390  
CLARKSBURG, WV 26302-0390

Agent: SAMUEL S. SPATAFORE, II

Inspector: MIKE UNDERWOOD  
Permit Issued: 10/14/94  
Well work Commenced: 6/3/96  
Well work Completed: 6/7/96  
Verbal plugging  
Permission granted on: N/A  
Rotary X Cable Rig  
Total Depth (feet) 5304  
Fresh water depths (ft) 70

Salt water depths (ft) 1280

Is coal being mined in area (Y/N)? N  
Coal Depths (ft): 134-137

**OPEN FLOW DATA**

Producing formation Alexander MCF/d Oil: Initial open flow 70 MCF/d Final open flow 70 MCF/d  
Gas: Initial open flow 70 MCF/d Oil: Initial open flow N/A Bbl/d  
Final open flow MCF/d Final open flow N/A Bbl/d  
Time of open flow between initial and final tests 72 Hours  
Static rock pressure 1700 psig (surface pressure) after 4 Hours  
Pay zone depth (ft) 5166-76

Second producing formation Benson/Riley MCF/d Oil: Initial open flow 10 MCF/d Final open flow 10 MCF/d  
Gas: Initial open flow 10 MCF/d Oil: Initial open flow N/A Bbl/d  
Final open flow MCF/d Final open flow N/A Bbl/d  
Time of open flow between initial and final tests 72 Hours  
Static rock pressure 1580 psig (surface pressure) after 4 Hours  
Pay zone depth (ft) 4870-80

NOTE: ON BACK OF THIS FORM PUT THE FOLLOWING: 1). DETAILS OF PERFORATED INTERVALS, FRACTURING OR STIMULATING, PHYSICAL CHANGE, ETC. 2). THE WELL LOG WHICH IS A SYSTEMATIC DETAILED GEOLOGICAL RECORD OF ALL FORMATIONS, INCLUDING COAL ENCOUNTERED BY THE WELLBORE.

For: RARE EARTH MINERALS, INC.

By: [Signature]  
Date: 10/16/96

Alexander - Perforated from 5164-74 with 30 holes

Water Frac - X-Link with 23,000# 20/40 Sand at 20 BPM

Using 230 BBL of water and 500 Gal. 15% Acid

Benson, Riley, Bradford - Perforated from 4440 to 4880 with 30 holes

Water Frac X-Link with 30,000# 20/40 Sand at 20 BPM.

Using 230 BBL of water and 500 G1a. 15% Acid

---

DRILLING LOG

|              |             |                                  |
|--------------|-------------|----------------------------------|
| Sand & Shale | 0 - 120     | 1/2" Stream H <sub>2</sub> O 70' |
| Shale        | 120 - 1020  |                                  |
| Salt Sand    | 1020 - 1105 | Damp at 250'                     |
| Shale        | 1105 - 1200 |                                  |
| Salt Sand    | 1200 - 1250 |                                  |
| Shale        | 1250 - 1850 |                                  |
| Big Lime     | 1850 - 1930 |                                  |
| Shale        | 1930 - 2160 |                                  |
| Weir         | 2160 - 2260 |                                  |
| Shale        | 2260 - 2560 |                                  |
| Gordon Stray | 2560 - 2600 |                                  |
| Sand & Shale | 2600 - 3250 |                                  |
| Warren       | 3250 - 3280 |                                  |
| Shale        | 3280 - 3900 |                                  |
| Balltown     | 3900 - 4040 |                                  |
| Shale        | 4040 - 4380 |                                  |
| Bradford     | 4380 - 4470 |                                  |
| Shale        | 4470 - 4660 |                                  |
| Riley        | 4660 - 4810 |                                  |
| Shale        | 4810 - 4870 |                                  |
| Benson       | 4870 - 4900 |                                  |
| Shale        | 4900 - 5150 |                                  |
| Alexander    | 5150 - 5020 |                                  |

TD 5304