

WW-7
8-30-06



West Virginia Department of Environmental Protection
Office of Oil and Gas
WELL LOCATION FORM: GPS

API: 47-017-02469 WELL NO.: WV 657146 (B. O. Davis #1829)

FARM NAME: B. O. Davis Garnett C. Davis

RESPONSIBLE PARTY NAME: EQT Production Company

COUNTY: Doddridge DISTRICT: New Milton

QUADRANGLE: New Milton 7.5'

SURFACE OWNER: John C. & Holly L. Widener

ROYALTY OWNER: Ed Broome Inc., et al.

UTM GPS NORTHING: 4343053

UTM GPS EASTING: 525126 GPS ELEVATION: 361 m (1185 ft)

The Responsible Party named above has chosen to submit GPS coordinates in lieu of preparing a new well location plat for a plugging permit or assigned API number on the above well. The Office of Oil and Gas will not accept GPS coordinates that do not meet the following requirements:

1. Datum: NAD 1983, Zone: 17 North, Coordinate Units: meters, Altitude: height above mean sea level (MSL) – meters.
2. Accuracy to Datum – 3.05 meters
3. Data Collection Method:

Survey grade GPS _____ : Post Processed Differential _____
 Real-Time Differential _____
 Mapping Grade GPS X : Post Processed Differential X
 Real-Time Differential _____

4. Letter size copy of the topography map showing the well location.

I the undersigned, hereby certify this data is correct to the best of my knowledge and belief and shows all the information required by law and the regulations issued and prescribed by the Office of Oil and Gas.

RECEIVED
Office of Oil and Gas

AUG 14 2019

[Signature]
Signature

PS#2180
Title

8/1/19
Date
West Virginia Department of Environmental Protection

Topo Quad: New Milton 7.5'

Scale: 1" = 2000'

County: Doddridge

Date: July 25, 2019

District: New Milton

Project No: 67-30-00-08

47-017-02469 WV 657146 (B. O. Davis #1829)

Topo



NAD 27, North Zone
N:270490.77
E:1657542.38

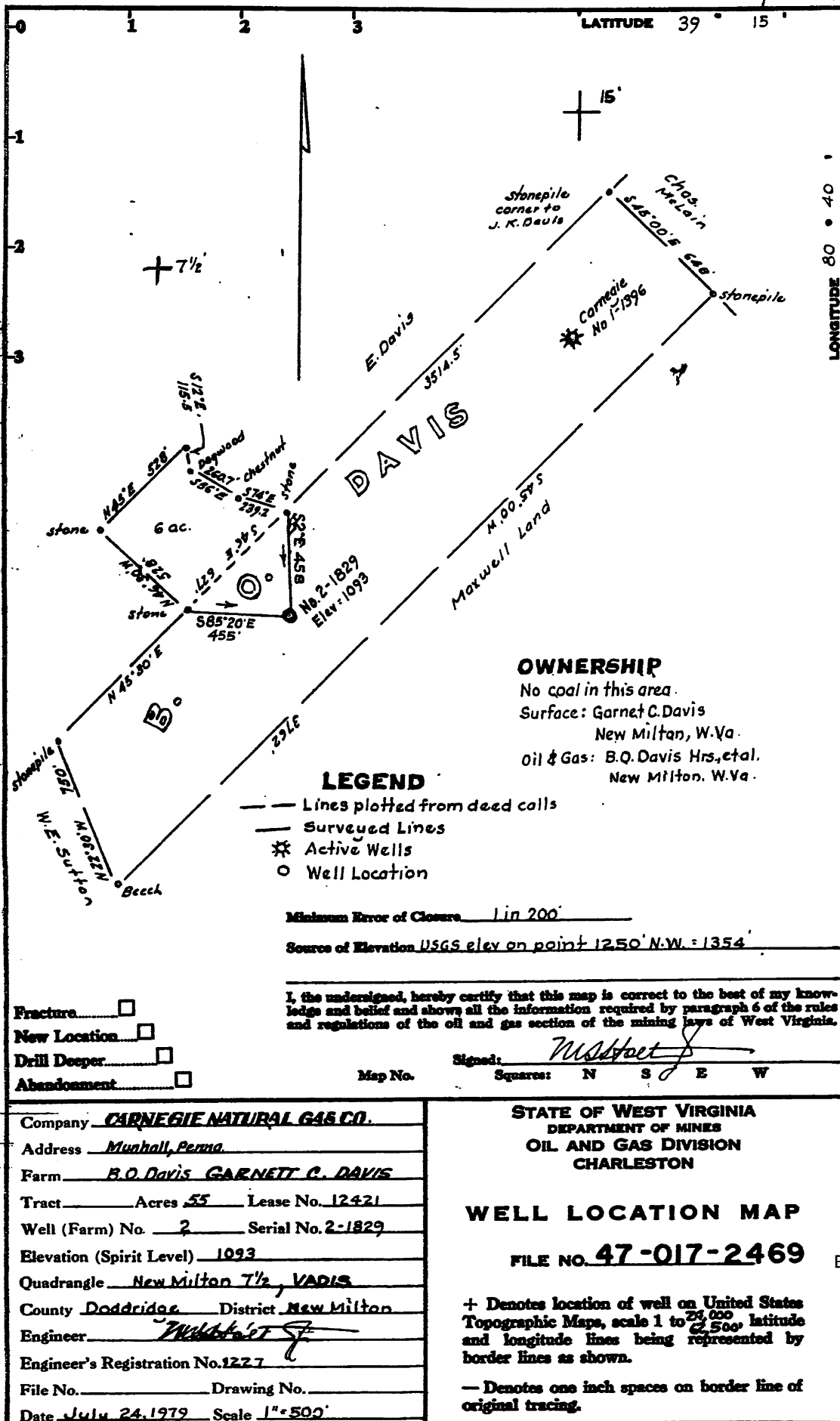
WGS 84
LAT:39.236416
LONG:-80.708865
ELEV:1184.93



SURVEYING AND MAPPING SERVICES PERFORMED BY:
ALLEGHENY SURVEYS, INC.
 1-800-482-8606
 237 Birch River Road
 Birch River, WV 26610
 PH: (304) 649-8606
 FAX: (304) 649-8608

PREPARED FOR:
EQT Production Company
 2400 Ansys Drive, Suite 200
 Canonsburg, PA 15317

8/13/79 *RF*



Company CARNEGIE NATURAL GAS CO.
 Address Munhall, Penna
 Farm B.O. Davis GARNETT C. DAVIS
 Tract _____ Acres 55 Lease No. 12421
 Well (Farm) No. 2 Serial No. 2-1829
 Elevation (Spirit Level) 1093
 Quadrangle New Milton 7 1/2, DAVIS
 County Doddridge District New Milton
 Engineer W. H. ...
 Engineer's Registration No. 1227
 File No. _____ Drawing No. _____
 Date July 24, 1979 Scale 1" = 500'

STATE OF WEST VIRGINIA
 DEPARTMENT OF MINES
 OIL AND GAS DIVISION
 CHARLESTON

WELL LOCATION MAP
 FILE NO. 47-017-2469

+ Denotes location of well on United States Topographic Maps, scale 1 to 25,000, latitude and longitude lines being represented by border lines as shown.
 — Denotes one inch spaces on border line of original tracing.

RECEIVED
 Office of Oil and Gas
 AUG 14 2019
 WV Department of Environmental Protection

ALEXander 5400'

Topo Quad: New Milton 7.5'

Scale: 1" = 200'

47-017-02469 P

County: Doddridge

Date: July 25, 2019

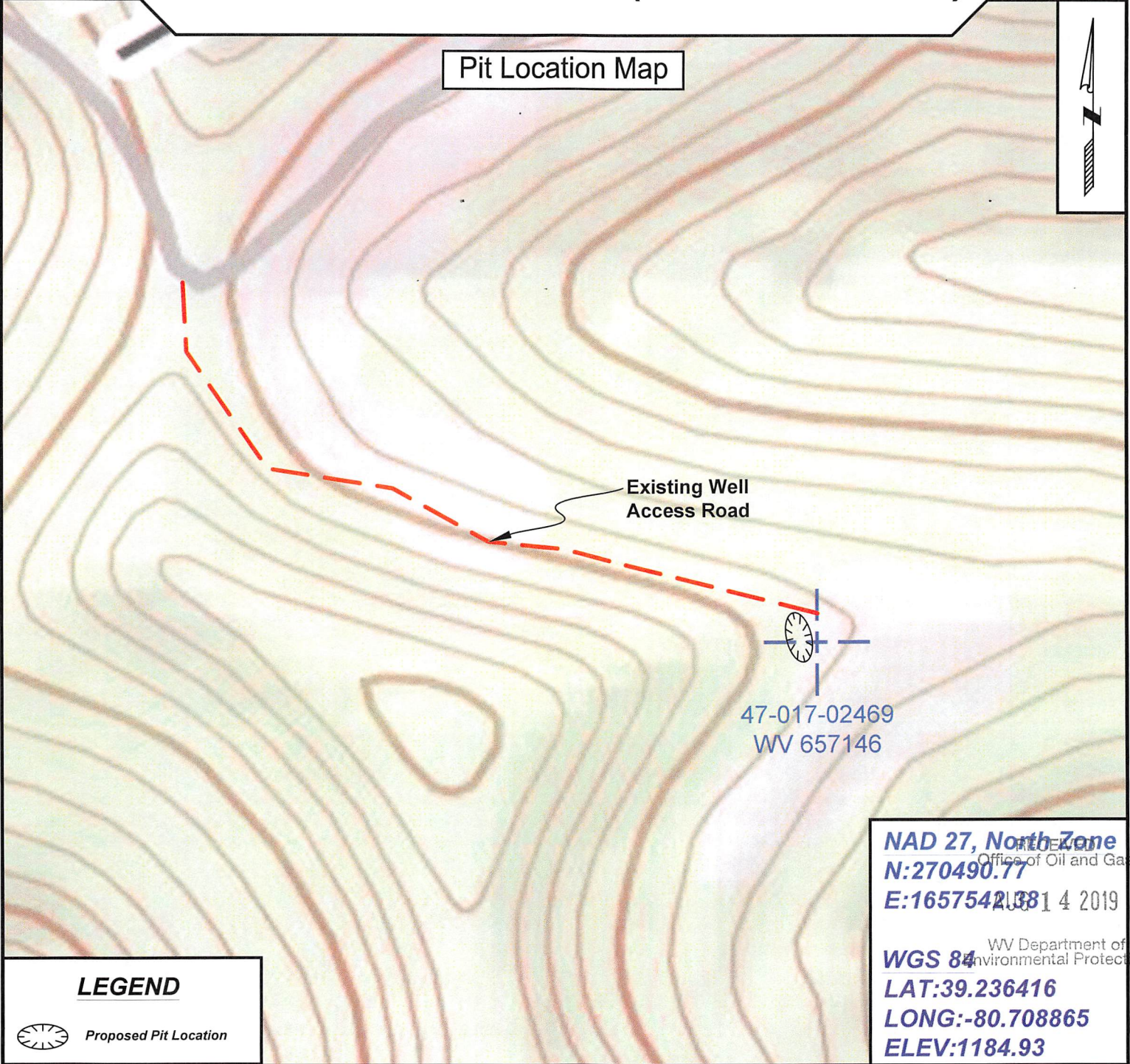
District: New Milton

Project No: 67-30-00-08

47-017-02469 WV 657146 (B. O. Davis #1829)

Topo

Pit Location Map



Existing Well Access Road

47-017-02469
WV 657146

NAD 27, North Zone
N:270490.77
E:1657542.38

WGS 84
LAT:39.236416
LONG:-80.708865
ELEV:1184.93

LEGEND

 Proposed Pit Location



SURVEYING AND MAPPING SERVICES PERFORMED BY:

ALLEGHENY SURVEYS, INC.

1-800-482-8606
237 Birch River Road
Birch River, WV 26610
PH: (304) 649-8606
FAX: (304) 649-8608

PREPARED FOR:

EQT Production Company

2400 Ansys Drive, Suite 200
Canonsburg, PA 15317

Topo Quad: New Milton 7.5'

Scale: 1" = 500'

47-017-02469P

County: Doddridge

Date: July 25, 2019

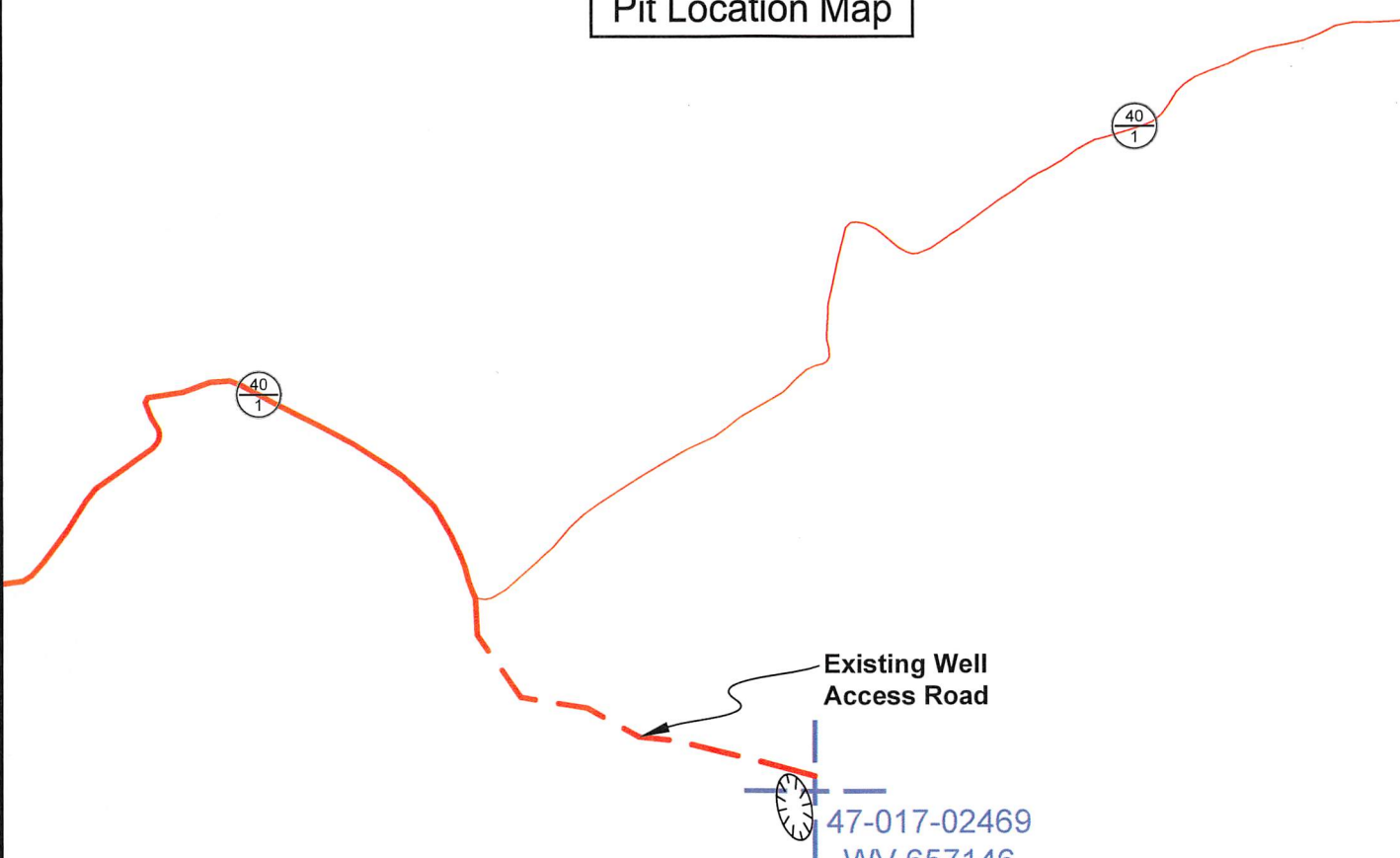
District: New Milton

Project No: 67-30-00-08

Highway

47-017-02469 WV 657146 (B. O. Davis #1829)

Pit Location Map



Existing Well Access Road

47-017-02469
WV 657146


RECEIVED
Office of Oil and Gas

AUG 14 2019

WV Department of Environmental Protection
NAD 27, North Zone
N:270490.77
E:1657542.38

WGS 84
LAT:39.236416
LONG:-80.708865
ELEV:1184.93

LEGEND

 Proposed Pit Location



SURVEYING AND MAPPING SERVICES PERFORMED BY:
ALLEGHENY SURVEYS, INC.

1-800-482-8606
237 Birch River Road
Birch River, WV 26610
PH: (304) 649-8606
FAX: (304) 649-8608

PREPARED FOR:

EQT Production Company

2400 Ansys Drive, Suite 200
Canonsburg, PA 15317