

Minimum Error of Closure 1' IN 200'
 Source of Elevation ROAD FORKE ELEVATION - 857'

"I, the undersigned, hereby certify that this map is correct to the best of my knowledge and belief and shows all the information required by paragraph 6 of the rules and regulations of the oil and gas section of the mining laws of West Virginia."

FRACTURE... Conc. 6/24/70
 New Location...
 Drill Deeper...
 Abandonment... -2/15/89

MAP SHT. 54, 5.9-W4, F.B. 551 PG. 11 & 13

Company CNG Transmission
 Address 445 West Main Street Clarksburg, W. Va.
 Farm ADAMS HEIRS
 Tract 5574-22617-150 Acres 150 Lease No. 29530
 Well (Farm) No. 1494 Serial No. 1494
 Elevation (Spirit Level) 1121'
 Quadrangle CENTERPOINT 15 Smithburg 7.5 Conc. 6-24-70
 County DODDRIDGE District GRANT
 Engineer Jackson M. Jarvis
 Engineer's Registration No. 2397
 File No. _____ Drawing No. _____
 Date MARCH 26, 1970 Scale 1" = 40 POLES

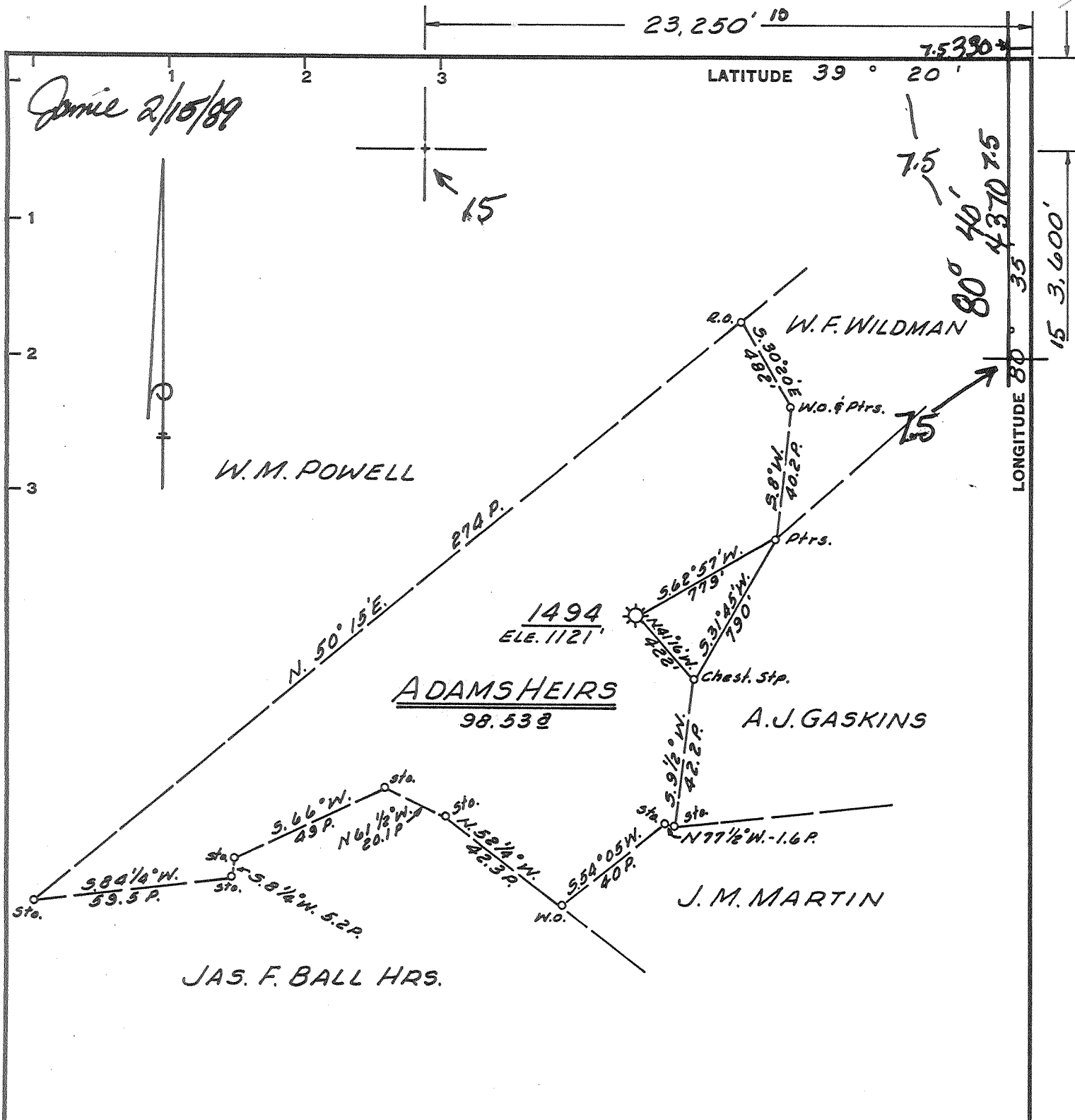
STATE OF WEST VIRGINIA
 DEPARTMENT OF MINES
 OIL AND GAS DIVISION
 CHARLESTON

47-017-2410
 WELL LOCATION MAP
 FILE NO. DOD-38-FRAC.

Plugging
 Cancelled

MAR 18 1991

4 Denotes location of well on United States Topographic Maps, scale 1 to 62,500, latitude and longitude lines being represented by border lines as shown.
 - Denotes one inch spaces on border line of original tracing.



Minimum Error of Closure 1' IN 200'
 Source of Elevation ROAD FORK ELEVATION - 857'

"I, the undersigned, hereby certify that this map is correct to the best of my knowledge and belief and shows all the information required by paragraph 6 of the rules and regulations of the oil and gas section of the mining laws of West Virginia."

FRACTURE... Conc. 6/24/70
 New Location...
 Drill Deeper...
 Abandonment... -2/15/89

MAP SHT. 54, 5.9-W4, F.B. 551 PG. 11 & 13

Company CNG Transmission
 Address 445 West Main Street Clarksburg, W.V.
 Farm ADAMS HEIRS
 Tract 5574-22617- Acres 150 Lease No. 23530
 Well (Farm) No. _____ Serial No. 1494
 Elevation (Spirit Level) 1121'
 Quadrangle CENTERPOINT 15 Smithburg 7.5 Conc. 6-24-70
 County DODDRIDGE District GRANT
 Engineer Jackson M. Jarvis
 Engineer's Registration No. 2397
 File No. _____ Drawing No. _____
 Date MARCH 26, 1970 Scale 1" = 40 POLES

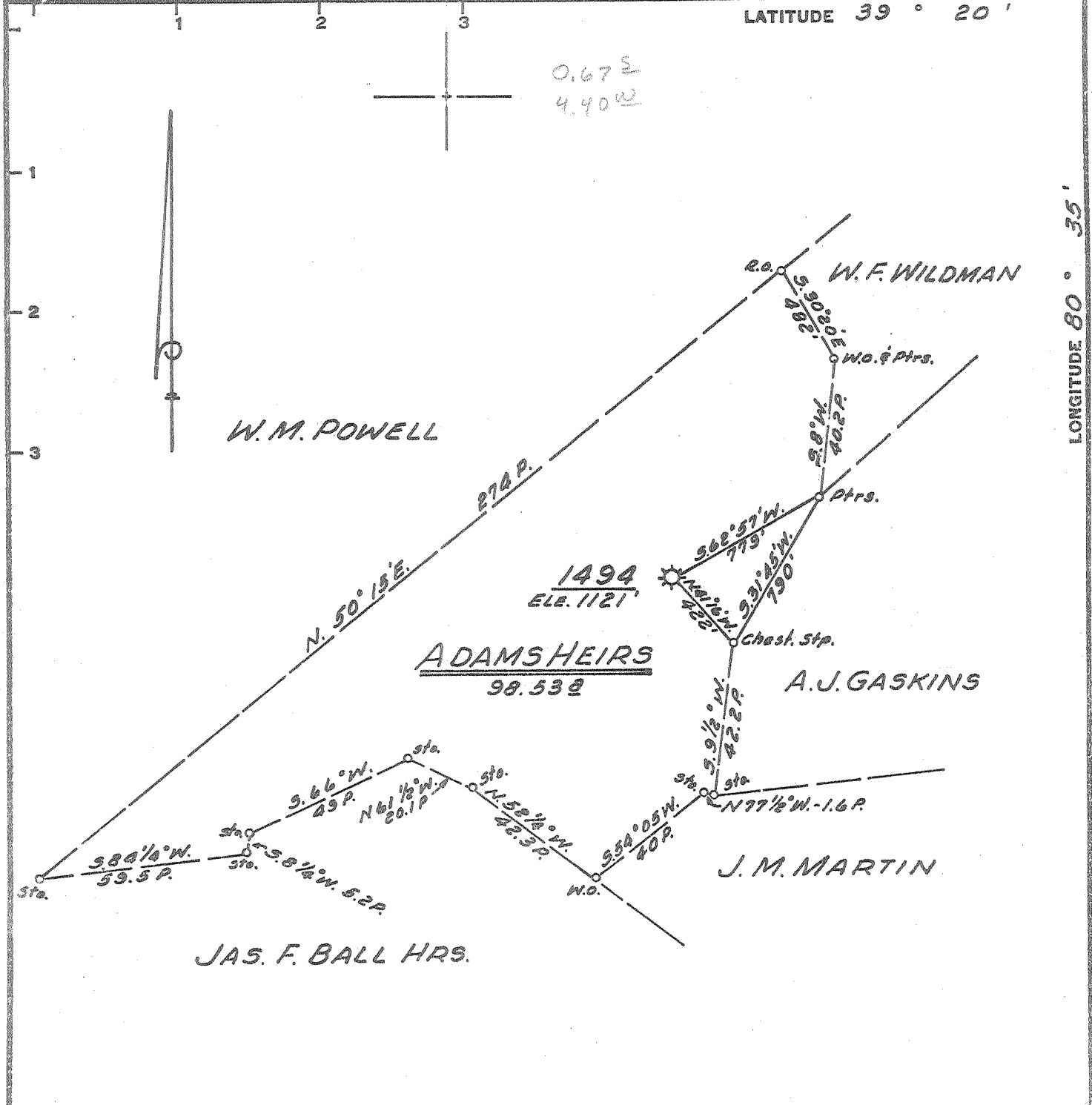
STATE OF WEST VIRGINIA
 DEPARTMENT OF MINES
 OIL AND GAS DIVISION
 CHARLESTON

47-017-2410-P
 WELL LOCATION MAP
 FILE NO. DOD-38-FRAC.

* Denotes location of well on United States Topographic Maps, scale 1 to 62,500, latitude and longitude lines being represented by border lines as shown.

— Denotes one inch spaces on border line of original tracing.

MAR 17 1989



Minimum Error of Closure 1' IN 200'
 Source of Elevation ROAD FORK ELEVATION - 857'
 "I, the undersigned, hereby certify that this map is correct to the best of my knowledge and belief and shows all the information required by paragraph 6 of the rules and regulations of the oil and gas section of the mining laws of West Virginia."

FRACTURE... Conc. 6/24/70
 New Location...
 Drill Deeper...
 Abandonment...

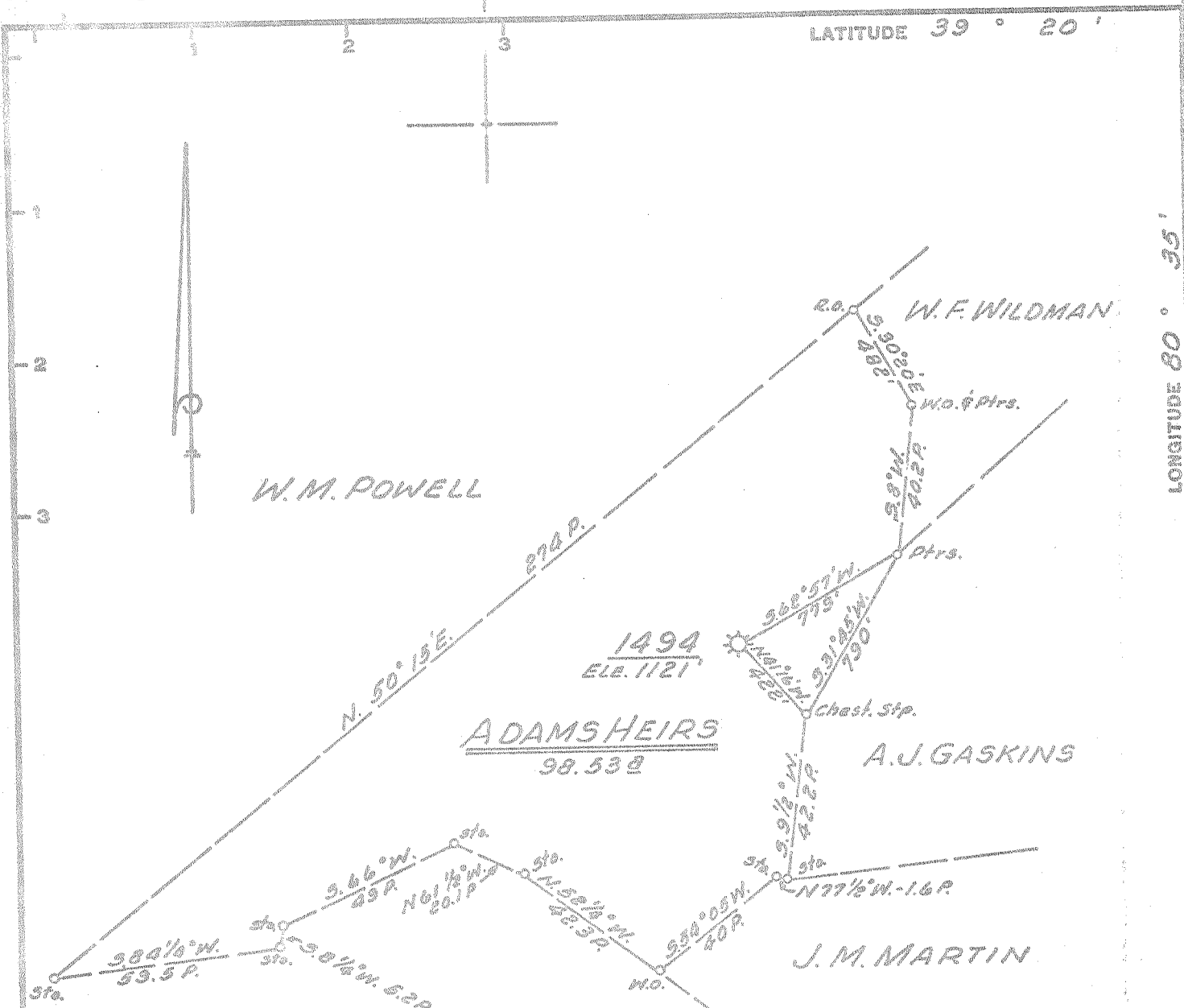
MAP SHT. 54, 5.9-W4, F.B. 551 Pg. 11 & 13

Company CONSOLIDATED GAS SUPPLY CORP.
 Address CLARKSBURG, WEST VA.
 Farm ADAMS HEIRS
 Tract Acres 150 Lease No. 5574-22617-23530
 Well (Farm) No. 1494 Serial No. 1494
 Elevation (Spirit Level) 1121'
 Quadrangle CENTERPOINT SC
 County DODDRIDGE District GRANT
 Engineer Jackson M. Jarvis
 Engineer's Registration No. 2397
 File No. Drawing No.
 Date MARCH 26, 1970 Scale 1" = 40 POLES

STATE OF WEST VIRGINIA
 DEPARTMENT OF MINES
 OIL AND GAS DIVISION
 CHARLESTON

WELL LOCATION MAP
 FILE NO. DOD-38-FRAC. 2410
Conc. 6-24-70

+ Denotes location of well on United States Topographic Maps, scale 1 to 62,500, latitude and longitude lines being represented by border lines as shown.
 - Denotes one inch spaces on border line of original tracing.



Minimum Error of Closure 1' IN 200'
 Source of Elevation ROAD FORK ELEVATION - 857'

"I, the undersigned, hereby certify that this map is correct to the best of my knowledge and belief and shows all the information required by paragraph 6 of the rules and regulations of the oil and gas section of the mining laws of West Virginia."

- FRACTURE...
 New Location...
 Drill Deeper...
 Abandonment...

MAP SHT. 54, 59-W4, FB, 551 PG. 11 & 13

Company CONSOLIDATED GAS SUPPLY CORP.
 Address CLARKSBURG, WEST VA.
 Farm ADAMS HEIRS
 Tract 5574-22617- Acres 150 Lease No. 29530
 Well (Farm) No. 1494 Serial No. 1494
 Elevation (Spirit Level) 1121'
 Quadrangle CENTERPOINT SC
 County DODDRIDGE District GRANT
 Engineer Jackson M. Jarvis
 Engineer's Registration No. 2397
 File No. _____ Drawing No. _____
 Date MARCH 26, 1970 Scale 1" = 40 POLES

STATE OF WEST VIRGINIA
 DEPARTMENT OF MINES
 OIL AND GAS DIVISION
 CHARLESTON

WELL LOCATION MAP
 FILE NO. DOD-38-FRAC.

+ Denotes location of well on United States Topographic Maps, scale 1 to 62,500, latitude and longitude lines being represented by border lines as shown.

- Denotes one inch spaces on border line of original tracing.