

4701702409P

WW-7
8-30-06



West Virginia Department of Environmental Protection
Office of Oil and Gas
WELL LOCATION FORM: GPS

API: 47-017-02409 WELL NO.: 1599

FARM NAME: Williams, J.T.

RESPONSIBLE PARTY NAME: Diversified Production LLC

COUNTY: Doddridge DISTRICT: Grant

QUADRANGLE: Smithburg

SURFACE OWNER: Edward L. Snyder

ROYALTY OWNER: Diversified Production LLC

UTM GPS NORTHING: 4,353,293.1

UTM GPS EASTING: 526,114.0 GPS ELEVATION: 921

The Responsible Party named above has chosen to submit GPS coordinates in lieu of preparing a new well location plat for a plugging permit or assigned API number on the above well. The Office of Oil and Gas will not accept GPS coordinates that do not meet the following requirements:

1. Datum: NAD 1983, Zone: 17 North, Coordinate Units: meters, Altitude: height above mean sea level (MSL) – meters.
2. Accuracy to Datum – 3.05 meters
3. Data Collection Method:

Survey grade GPS : Post Processed Differential

Real-Time Differential

Mapping Grade GPS : Post Processed Differential

Real-Time Differential

4. Letter size copy of the topography map showing the well location.

I the undersigned, hereby certify this data is correct to the best of my knowledge and belief and shows all the information required by law and the regulations issued and prescribed by the Office of Oil and Gas.


Signature

Director Production
Title

9/16/2021
Date

RECEIVED
Office of Oil and Gas

SEP 28 2021

WV Department of
Environmental Protection

10/15/2021

4701702409P



Diversified Gas & Oil Corporation
100 Diversified Way
Pikeville KY, 41051

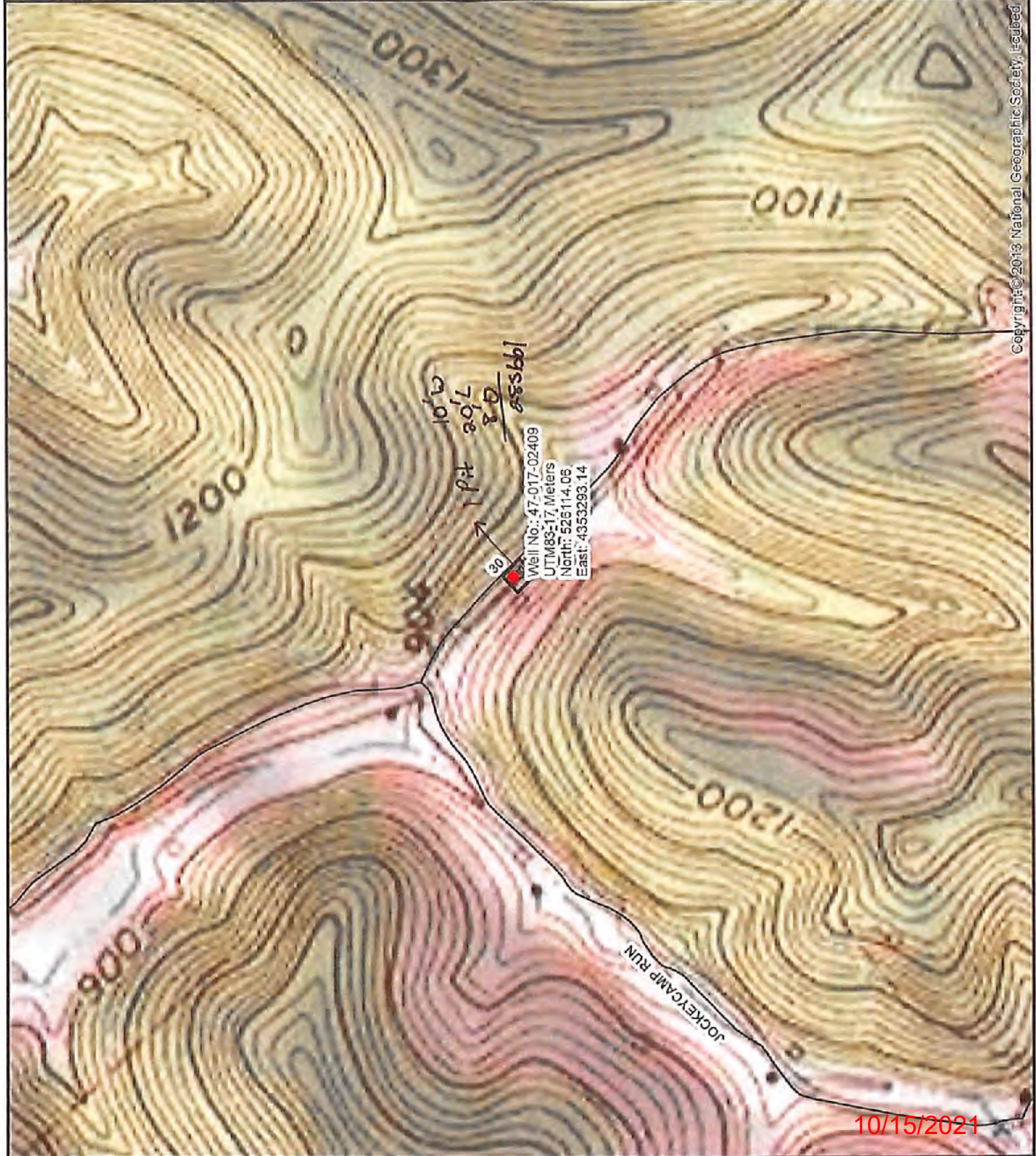
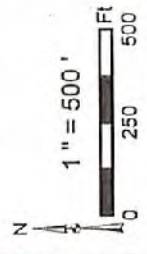
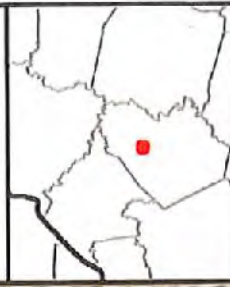
47-017-02409

Plugging Map

Legend

- Well
- Access Road
- Pits
- Pad
- Public Roads

RECEIVED
Office of Oil and Gas
SEP 28 2021
WV Department of
Environmental Protection



Well No.: 47-017-02409
UTM83-17 Meters
North: 526114.06
East: 4353293.14

Copyright © 2013 National Geographic Society, Inc.

10/15/2021