

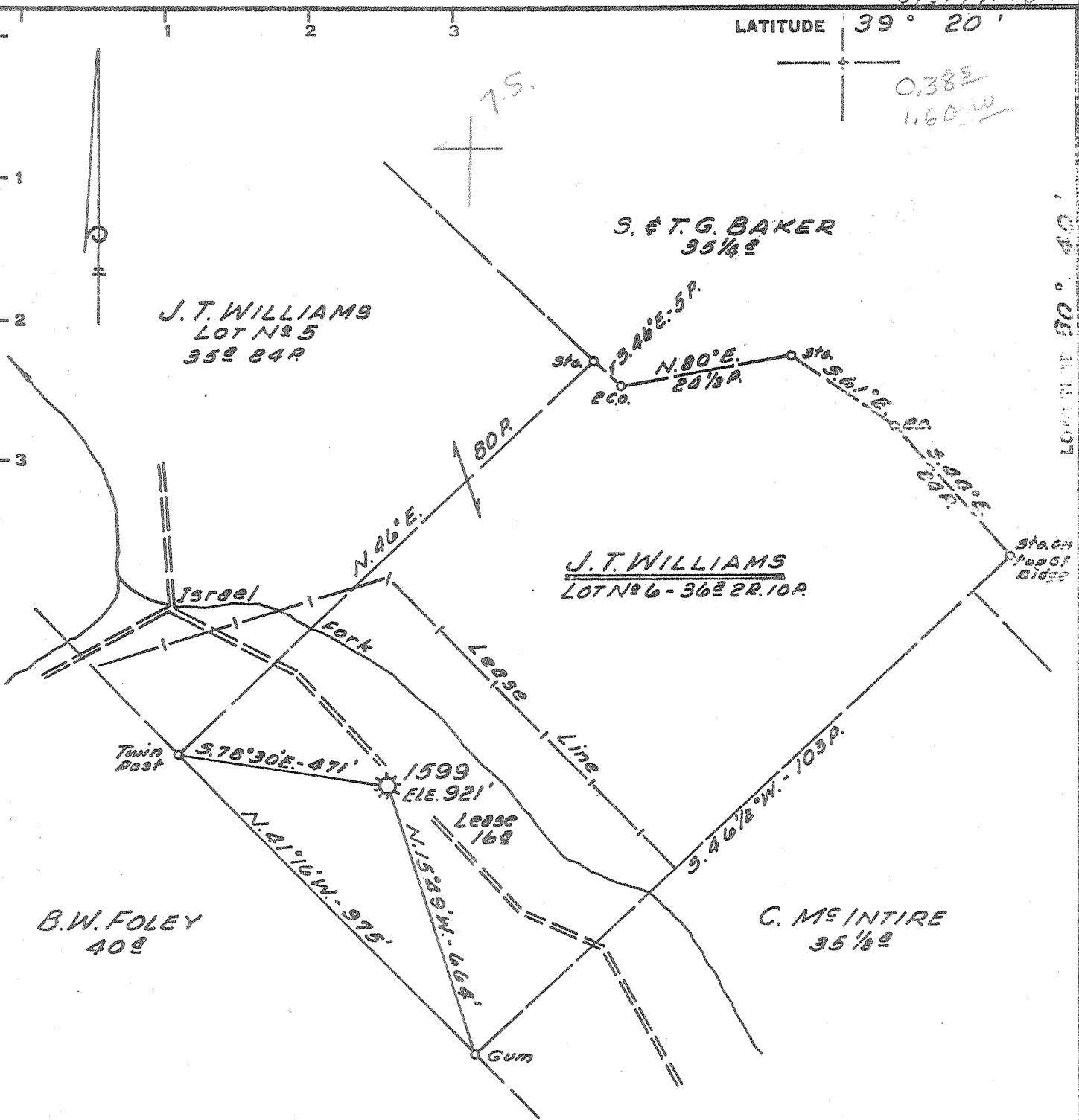
8,400'
3/31/70 CEN

LATITUDE 39° 20'

0.382
1.60 W

2,000'

LONGITUDE 80° 40'



Minimum Error of Closure 1' IN 800'
 Source of Elevation CONSOLIDATED GAS SUPPLY CORP. WELL NO 7025 ELE. 897'
 "I, the undersigned, hereby certify that this map is correct to the best of my knowledge and belief and shows all the information required by paragraph 6 of the rules and regulations of the oil and gas section of the mining laws of West Virginia."

FRACTURE Conc. 6/24/70
 New Location
 Drill Deeper
 Abandonment

MAP SHT. 54, 58-W5; F.B. 1117 Pg. 13

Company CONSOLIDATED GAS SUPPLY CORP.
 Address CLARKSBURG, WEST VA.
 Farm J. T. WILLIAMS
 Tract _____ Acres 16 Lease No. 10098
 Well (Farm) No. _____ Serial No. 1599
 Elevation (Spirit Level) 921'
 Quadrangle CENTERPOINT SW Smithburg
 County DODDRIDGE District GRANT
 Engineer Jackson M. Jarvis
 Engineer's Registration No. 2397
 File No. _____ Drawing No. _____
 Date MARCH 26, 1970 Scale 1" = 200 FEET

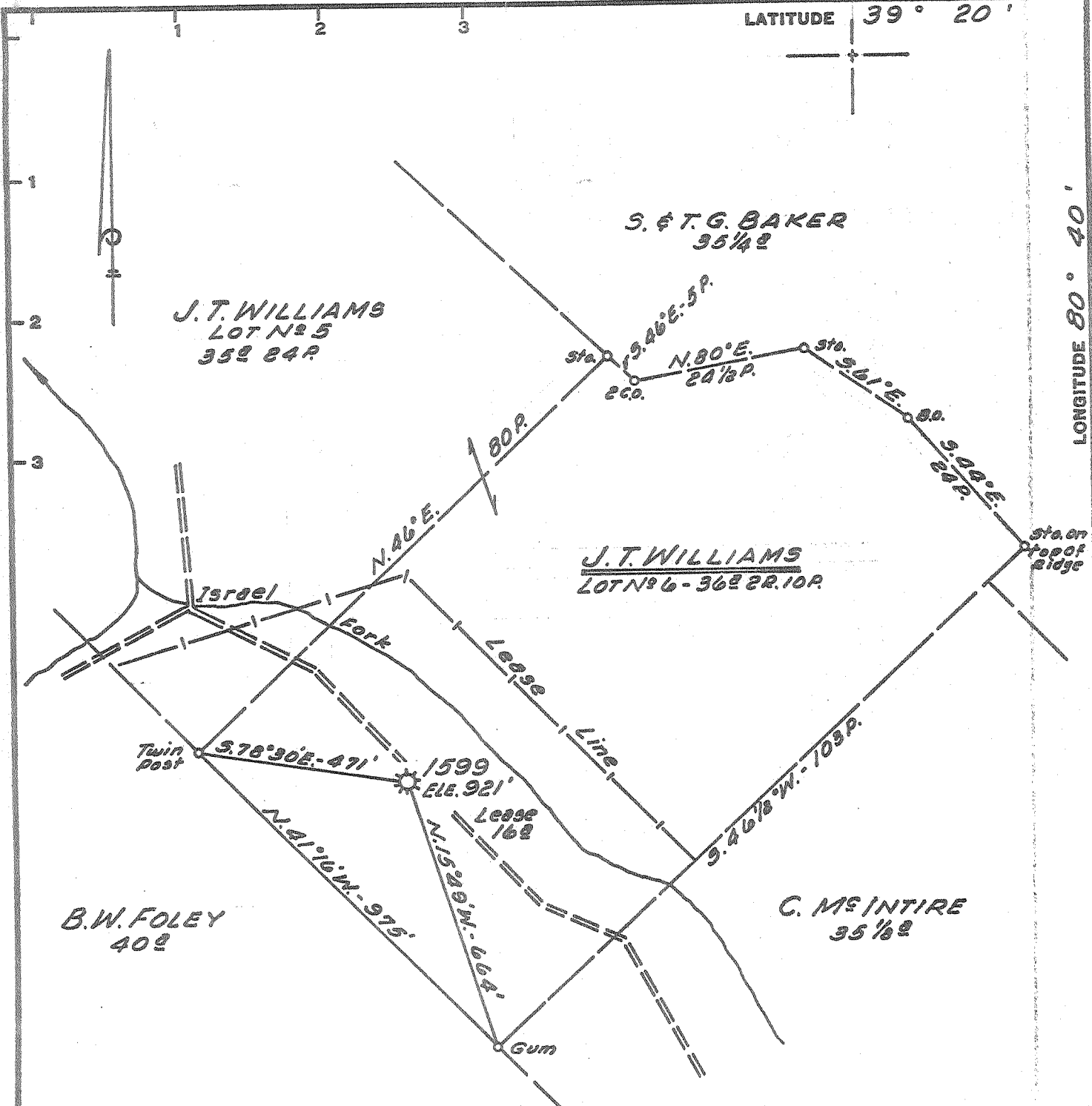
STATE OF WEST VIRGINIA
 DEPARTMENT OF MINES
 OIL AND GAS DIVISION
 CHARLESTON

WELL LOCATION MAP
 FILE NO. Dod-37-Inv.
Case. 6-24-70 2409
 + Denotes location of well on United States Topographic Maps, scale 1 to 62,500, latitude and longitude lines being represented by border lines as shown.
 - Denotes one inch spaces on border line of original tracing.

8,400'
3/21/70 GEN

LATITUDE 39° 20'

LONGITUDE 80° 40' 2,000'



- FRACTURE.....
- New Location.....
- Drill Deeper.....
- Abandonment.....

MAP SHT. 54, 58-W5; F.B. 1117 Pg. 13

Company CONSOLIDATED GAS SUPPLY CORP.
 Address CLARKSBURG, WEST VA.
 Farm J. T. WILLIAMS
 Tract _____ Acres 16 Lease No. 10098
 Well (Farm) No. _____ Serial No. 1599
 Elevation (Spirit Level) 921'
 Quadrangle CENTERPOINT SW
 County DODDRIDGE District GRANT
 Engineer Jackson M. Jarvis
 Engineer's Registration No. 2397
 File No. _____ Drawing No. _____
 Date MARCH 26, 1970 Scale 1" = 200 FEET

STATE OF WEST VIRGINIA
 DEPARTMENT OF MINES
 OIL AND GAS DIVISION
 CHARLESTON

WELL LOCATION MAP
 FILE NO. Dod-37-Frac.

+ Denotes location of well on United States Topographic Maps, scale 1 to 62,500, latitude and longitude lines being represented by border lines as shown.
 - Denotes one inch spaces on border line of original tracing.



RECEIVED

MAR 31 1970

DD-2409

STATE OF WEST VIRGINIA
DEPARTMENT OF MINES
OIL AND GAS WELLS DIVISION

Rotary
Spudder
Cable Tools XXX
Storage

Quadrangle... CENTERPOINT

Permit No. - - DD-2409

WELL RECORD

Oil or Gas Well... Gas (KIND)

Company Consolidated Gas Supply Corporation
Address Clarksburg, W. Va.
Farm J. T. Williams Acres 16
Location (waters)
Well No. 1599 Elev. 921'
District Grant, County Doddridge
The surface of tract is owned in fee by
Mineral rights are owned by
Drilling commenced 2-23-10
Drilling completed 3-30-10
Date Shot 2-6-11 From INJUN To
With 12 Qts.
Open Flow /10ths Water in InCh
/10ths Merc. in InCh
Volume Old well exhausted - Will Frac Cu. Ft.
Rock Pressure Not taken lbs. hrs.
Oil None bbls., 1st 24 hrs.
WELL ACIDIZED (DETAILS) No
WELL FRACTURED (DETAILS) Preparing to frac

Casing and Tubing	Used in Drilling	Left in Well	Packers
Size			Kind of Packer
16			
13			
10	98	None	Size of
8 1/4	1199	1199	
6 3/4	1786	1786	Depth set
5 3/16	1810	1810	
4 1/2			
3			Perf. top
2	1931	None	Perf. bottom
Liners Used			Perf. top
			Perf. bottom

Attach copy of cementing record. No cementing
CASING CEMENTED SIZE No. Ft. Date
Amount of cement used (bags)
Name of Service Co.
COAL WAS ENCOUNTERED AT 414 FEET 24 INCHES
FEET INCHES FEET INCHES
FEET INCHES FEET INCHES

RESULT AFTER TREATMENT (Initial open Flow or bbls.)
ROCK PRESSURE AFTER TREATMENT HOURS
Fresh Water None Feet Salt Water 1180' Feet
Producing Sand Injun Will frac to increase production Depth 1816-1946'

Formation	Color	Hard or Soft	Top	Bottom	Oil, Gas or Water	Depth	Remarks
Pittsburgh Coal			414	416			
Dunkard Sand			830	1015			
Salt Sand			1175	1421	Water	1180'	Salt
Maxton Sand			1560	1602			
Injun Sand			1816	1946	Gas	1936'- 1944'	
Total Depth				1966'			

Consolidated Gas Supply Corporation
445 West Main Street
Clarksburg, W. Va.