

WW-7
8-30-06



West Virginia Department of Environmental Protection
Office of Oil and Gas

WELL LOCATION FORM: GPS

API: 47-017-2213 WELL NO.: 2

FARM NAME: J. M. GRIBBLE

RESPONSIBLE PARTY NAME: S. L. Meadows, Jr. Production, Inc.

COUNTY: Doddridge DISTRICT: New Milton

QUADRANGLE: New Milton 7.5

SURFACE OWNER: Charles Schneider

ROYALTY OWNER: S. L. Meadows, Jr. Production, Inc.

UTM GPS NORTHING: 4,336,123 (NAD 83)

UTM GPS EASTING: 522,039 (NAD 83) GPS ELEVATION: 360 m or 1180 feet

The Responsible Party named above has chosen to submit GPS coordinates in lieu of preparing a new well location plat for a plugging permit or assigned API number on the above well. The Office of Oil and Gas will not accept GPS coordinates that do not meet the following requirements:

1. Datum: NAD 1983, Zone: 17 North, Coordinate Units: meters, Altitude: height above mean sea level (MSL) – meters.
2. Accuracy to Datum – 3.05 meters
3. Data Collection Method:

Survey grade GPS : Post Processed Differential

Real-Time Differential

Mapping Grade GPS : Post Processed Differential

Real-Time Differential

4. **Letter size copy of the topography map showing the well location.**

I the undersigned, hereby certify this data is correct to the best of my knowledge and belief and shows all the information required by law and the regulations issued and prescribed by the Office of Oil and Gas.

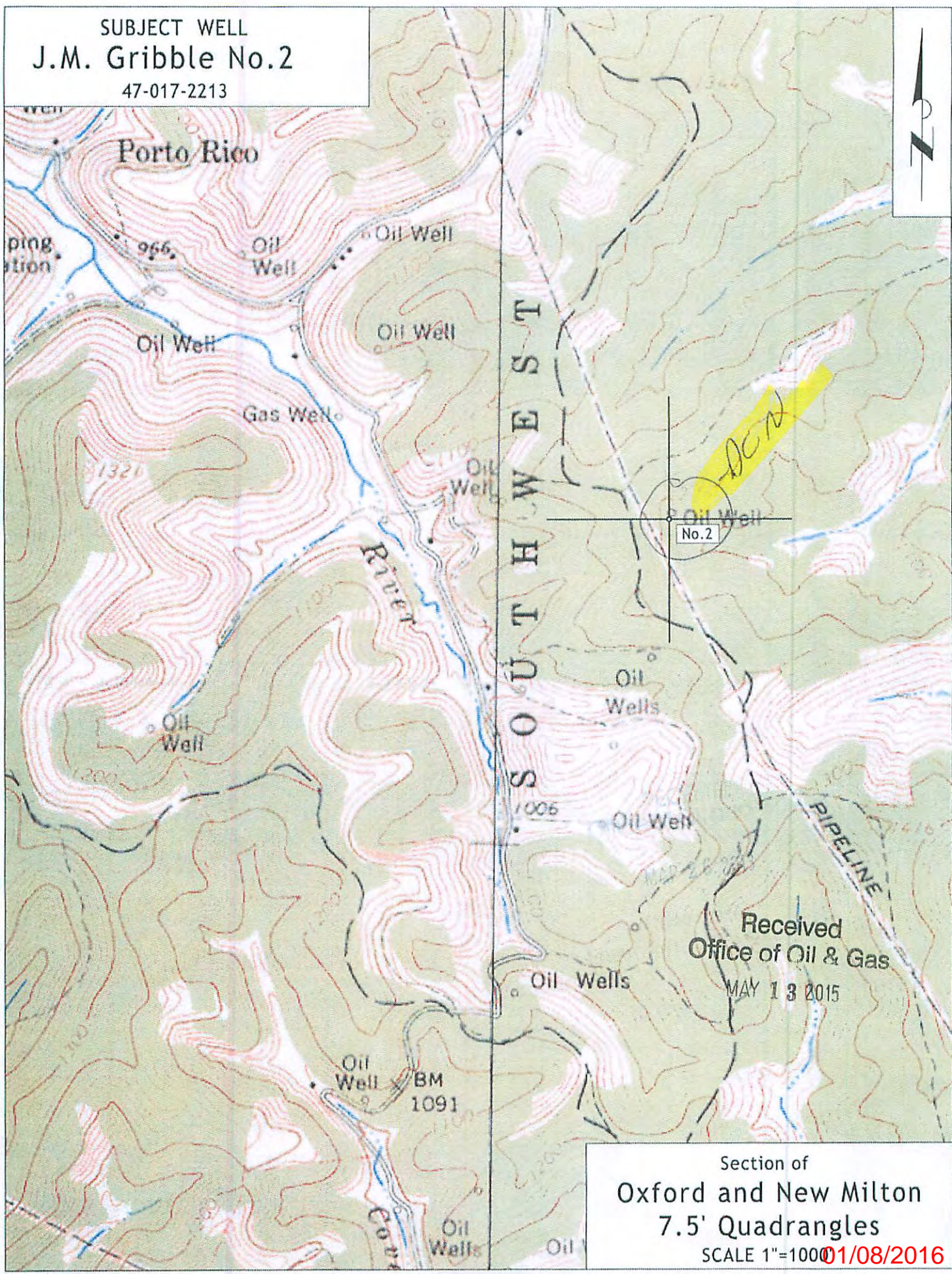
Signature

Professional Surveyor
Title

March 11, 2015
Date

Received
Office of Oil & Gas
MAY 13 2015

SUBJECT WELL
J.M. Gribble No.2
47-017-2213



Section of
Oxford and New Milton
7.5' Quadrangles
SCALE 1"=1000 01/08/2016