



1702213 P

WW-7  
5-02

West Virginia Department of Environmental Protection  
Office of Oil & Gas

**WELL LOCATION FORM: GPS**

API: 47- 017 - 2213 WELL NO: No.2

FARM NAME: J.M. Gribble

RESPONSIBLE PARTY NAME: S.L.Meadows Jr. Production Co.

COUNTY: Doddridge DISTRICT: New Milton

QUADRANGLE: New Milton 7..5'

SURFACE OWNER: Charles Schneider

ROYALTY OWNER: S.L. Meadows Production Co. et al.

UTM GPS NORTHING: 4,336,123 (NAD 83)

UTM GPS EASTING: 522,039 (NAD 83) GPS ELEVATION: 360 m. 1180FT

The Responsible Party named above has chosen to submit GPS coordinates in lieu of preparing a new well location plat for a plugging permit on the above well. The Office of Oil & Gas will not accept GPS coordinates that do not meet the following requirements:

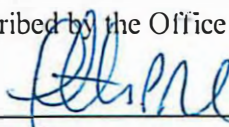
1. Datum: NAD 1983. Zone:17 North, Coordinate Units: meters, Altitude: height above mean sea level (MSL) - meters.
2. Accuracy to Datum - 3.05 meters
3. Data Collection Method:

Survey Grade GPS  Post Processed Differential   
 Real-Time Differential

Mapping Grade GPS  Post Processed Differential   
 Real-Time Differential

MAR 26 2013  
 RECEIVED  
 OFFICE OF OIL AND GAS

I the undersigned, hereby certify this data is correct to the best of my knowledge and belief and shows all the information required by law and the regulations issued and prescribed by the Office of Oil and Gas.

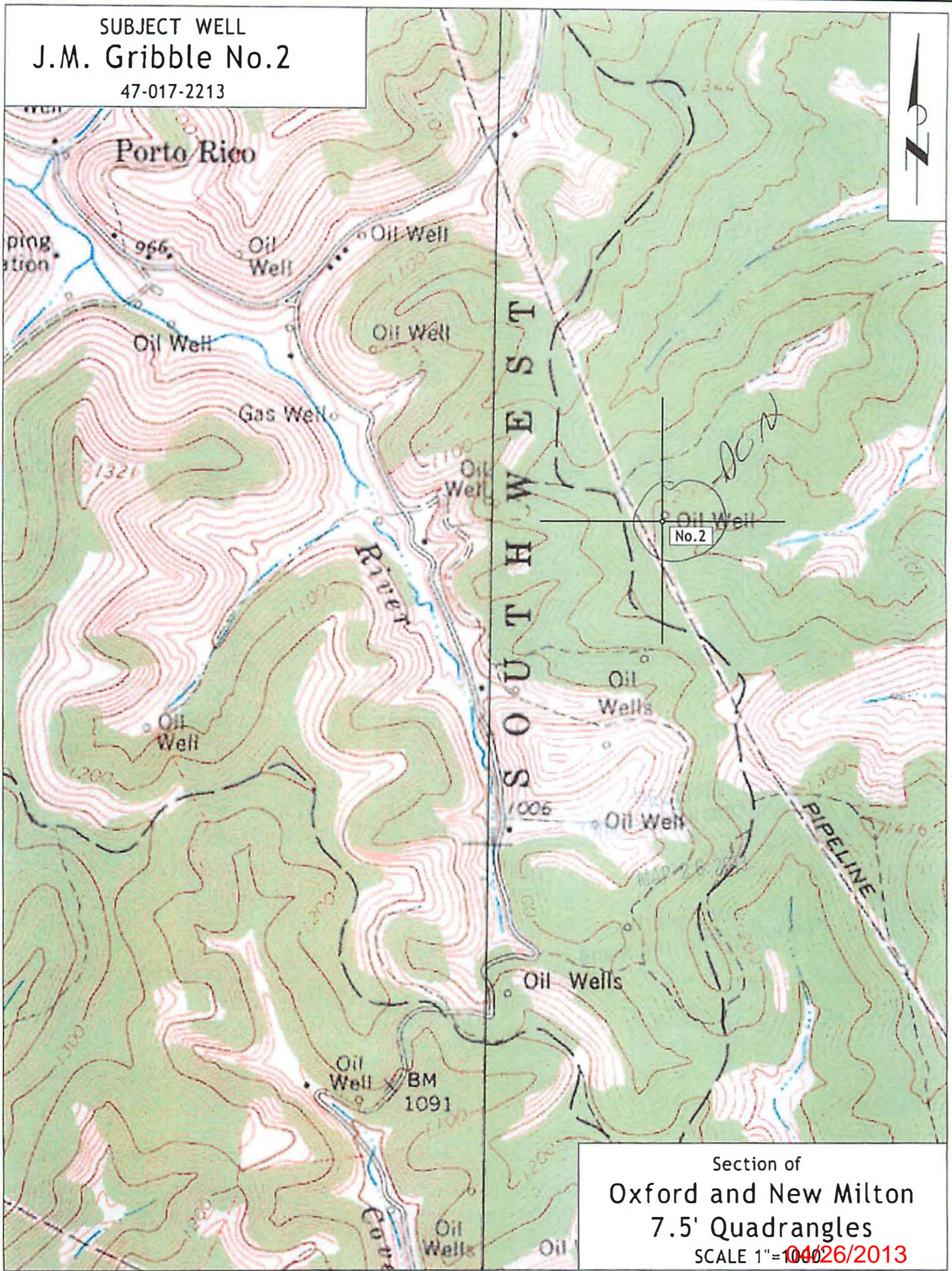
  
 Signature Timothy P. Roush

Professional Surveyor  
 Title

February 22, 2013  
 Date

04/26/2013

SUBJECT WELL  
J.M. Gribble No.2  
47-017-2213



Section of  
Oxford and New Milton  
7.5' Quadrangles  
SCALE 1"=1000'

04/26/2013