

LATITUDE 39° 10' 00"

88° 34' 00" LONGITUDE

7'5 OGIS topo location

7.5' loc	<u>0.815</u>	15' loc	<u>0.815</u>
	<u>0.03w</u>	(calc.)	<u>0.03w</u>

Company \_\_\_\_\_

Farm \_\_\_\_\_

Elevation topogrd. 1090'

WELL LOCATION MAP

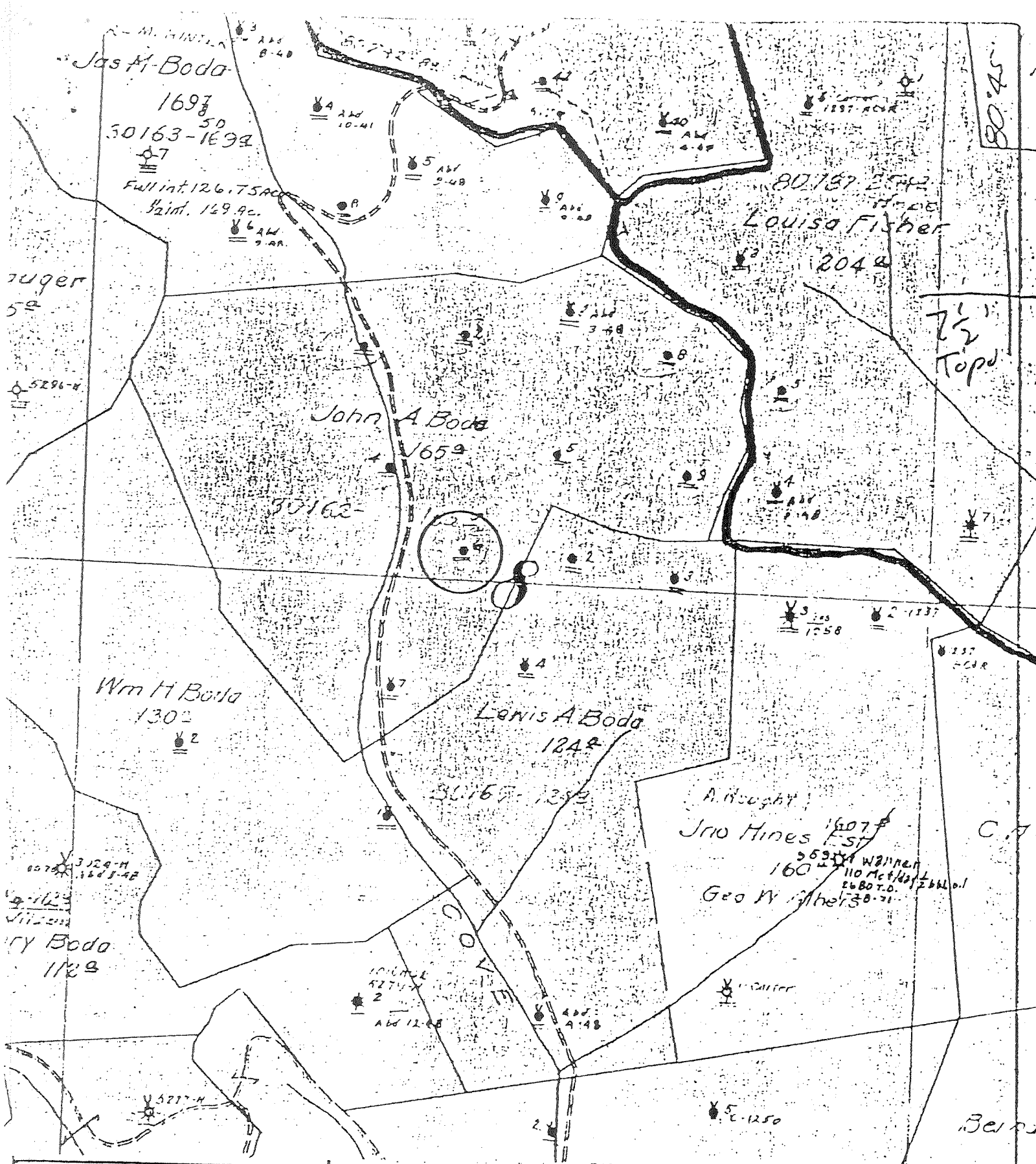
File No. 017-2195

Quad OXFORD 7 1/2' Holbrook

County DODD RIDGE <sup>EC</sup>

District CAVE

Dodd-2195



(+) DENOTES LOCATION OF WELL ON UNITED STATES TOPOGRAPHIC MAPS

FORM IV-B (8-78)

7521WB



STATE OF WEST VIRGINIA DEPARTMENT OF MINES OIL AND GAS DIVISION

DATE 1-25, 1979  
 OPERATOR'S WELL NO 6  
 API WELL NO. 47-017-2195  
 STATE COUNTY PERMIT

WELL TYPE: OIL  GAS  LIQUID INJECTION  WASTE DISPOSAL   
 (IF "GAS", PRODUCTION  STORAGE  DEEP  SHALLOW   
 LOCATION: ELEVATION \_\_\_\_\_ WATER SHED Cove Creek

DISTRICT Cove COUNTY Doddridge  
 QUADRANGLE Oxford 7 1/2'

SURFACE OWNER \_\_\_\_\_ ACREAGE \_\_\_\_\_  
 OIL & GAS ROYALTY OWNER \_\_\_\_\_ LEASE NO. \_\_\_\_\_ LEASE ACREAGE \_\_\_\_\_

PROPOSED WORK: DRILL  CONVERT  DRILL DEEPER  REDRILL  FRACTURE OR STIMULATE  PLUS OFF OLD FORMATION  PERFORATE NEW FORMATION  OTHER PHYSICAL CHANGE IN WELL (SPECIFY) \_\_\_\_\_

PLUS AND ABANDON  CLEAN OUT AND REPLUG   
 TARGET FORMATION \_\_\_\_\_ ESTIMATED DEPTH \_\_\_\_\_  
 WELL OPERATOR Pennzoil Company DESIGNATED AGENT James A. Crews  
 ADDRESS P. O. Box 1588 ADDRESS P. O. Box 1588  
Parkersburg, WV 26101 Parkersburg, WV 26101

J. A. Boda - L

11 A. 2036

WELL

ACRES 165

LEASE NO. 00102

SHIP OR DISTRICT

Cove

COUNTY Doddridge

STATE W. Va.

N.

S. 30 E. 11 W. 4

RIG COMMENCED Jan. 28th. 19 02

COMPLETED February 11th 19 02

CONTRACTOR

RIG COMMENCED February 11 19 02

COMPLETED April 12th 19 02

CONTRACTOR

Groutt Bros.

RIG COMMENCED 19

COMPLETED 19

CONTRACTOR

FORMATION

CASING RECORD

KIND	TOP	BOTTOM	STEEL LINE MEASUREMENT
Conductor		12	
Coal	189	182	
Soft Sand	1546	1580	
Medium Sand	1670	1695	
Big Lime	2010	2090	
Big Iron	2090	2200	
Strap	2738	2734	
Coarse Sand	2740	2745	
Oil	2741	2745	
TOTAL DEPTH		2765	

REMARKS	SIZE	BOTTOM CASING (STEEL LINE)	PUT IN WELL (TALLY MEAS.)	PULLED (TALLY MEAS.)	FEET IN WHICH SET
	10		373' - 7"	378' - 7"	
			1290	1290	
	6-0/15"		1574 - 6"		
			2214 - 6"		

PACKERS

KIND	SIZE	DEPTH SET	DATE SET

TORPEDO RECORD

DATE SHOT	NO. QTS.	SIZE SHELL	TOP SHOT	BOTTOM	RESULT
1-28-02	40	3	2740		
2-10-02	100		2010	2090	

ABANDONMENT RECORD

FILLED WITH	FROM	TO	SIZE	PLUS KIND	DEPTH

REMARKS

PRODUCTION RECORD

24 HOURS BEFORE SHOT	SAND	BBL'S.
24 HOURS AFTER SHOT	SAND	BBL'S.
GAS TEST		

APPROVED BY

DEC 1901  
FEB 1902

017-2195

(Bad Copy)

017-2192

FARM 12 A. 2000  
 TOWNSHIP OR DISTRICT Cove COUNTY Doddridge STATE W. Va. ACRES 165 LEASE NO. 00102  
 N. S. 20 E. W. 3  
 RIG COMMENCED Jan. 23th. 19 02 COMPLETED February 11th 19 02 CONTRACTOR  
 DRIG COMMENCED February 11 19 02 COMPLETED April 15th 19 02 CONTRACTOR Orentt Bros.  
 O. D. COMMENCED 19 COMPLETED 19 CONTRACTOR

FORMATION

KIND	TOP	BOTTOM	STEEL LINE MEASUREMENT	REMARKS
Continuator		12		
Coal	187	182		
Solid Sand	1816	1880		
Medium Sand	1870	1895		
Big Sand	2010	2090		
Big Sand	2090	2200		
Strat	2708	2734		
Coarse Sand	2740	2745		
Oil	2745	2765		
TOTAL DEPTH		2765		

CASING RECORD

SIZE	DEPTH CASING (STEEL LINE)	PUT IN WELL (TALLY MEAS.)	PULLED (TALLY MEAS.)	LEFT IN WELL (TALLY MEAS.)
10		373' - 7"	373' - 7"	
		1290	1290	
		1874 - 5"		
		2214 - 5"		

PACKERS

KIND	SIZE	DEPTH SET	DATE SET

TORPEDO RECORD

DATE SHOT	NO. QTS.	SIZE SHELL	TOP SHOT	BOTTOM	RESULT
1-23-02	40	5	2740		
2-11-02	100		2740	2765	

ABANDONMENT RECORD

FILLED WITH	FROM	TO	SIZE	PLUG KIND	DEPTH

REMARKS

PRODUCTION RECORD

24 HOURS BEFORE SHOT SAND BDLs.  
 72 HOURS AFTER SHOT SAND BDLs.  
 GAS TEST

APPROVED BY

017-2195

RECORDED  
FEB 21 1902

Bad Copy