

West Virginia Department of Environmental Protection
Office of Oil & Gas
WELL LOCATION FORM: GPS

API: 47- 017 - 2193 P WELL NO: No.4

FARM NAME: J.A. Bode

RESPONSIBLE PARTY NAME: S.L. Meadows Jr. Production Co. Inc

COUNTY: Doddridge DISTRICT: Cove

QUADRANGLE: Oxford 7.5'

SURFACE OWNER: Diane E. Trautman

ROYALTY OWNER: S.L. Meadows Jr. Production Co. et al.

UTM GPS NORTHING: 4,334,156 (NAD 83)

UTM GPS EASTING: 521,429 (NAD 83) GPS ELEVATION: 299 m.

The Responsible Party named above has chosen to submit GPS coordinates in lieu of preparing a new well location plat for a plugging permit on the above well. The Office of Oil & Gas will not accept GPS coordinates that do not meet the following requirements:

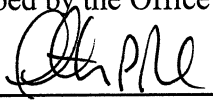
1. Datum: NAD 1983, Zone:17 North, Coordinate Units: meters, Altitude: height above mean sea level (MSL) - meters.
2. Accuracy to Datum - 3.05 meters
3. Data Collection Method:

Survey Grade GPS Post Processed Differential
 Real-Time Differential

Mapping Grade GPS Post Processed Differential
 Real-Time Differential

RECEIVED
 Office of Oil & Gas
 SEP 06 2011
 WV Department of
 Environmental Protection

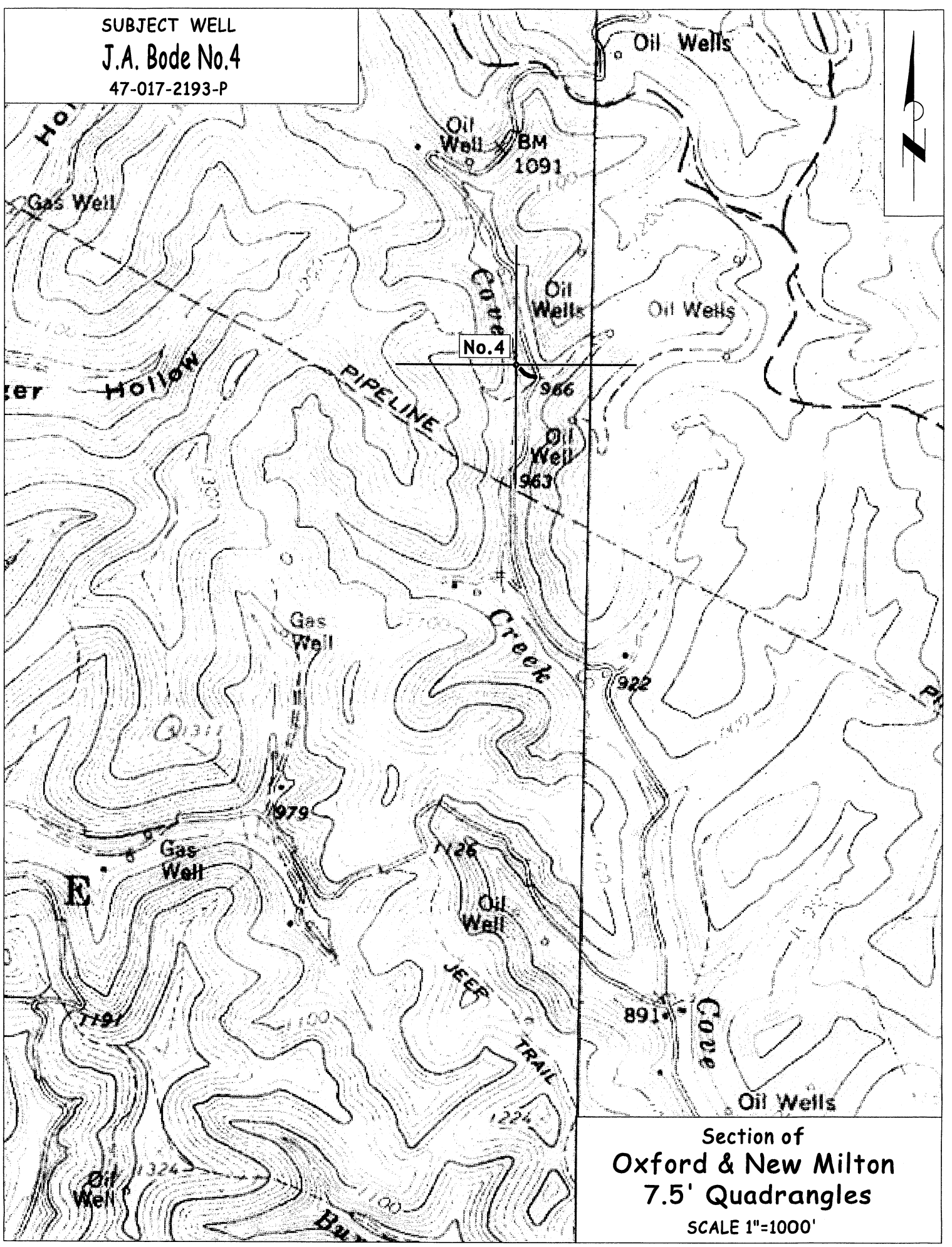
I the undersigned, hereby certify this data is correct to the best of my knowledge and belief and shows all the information required by law and the regulations issued and prescribed by the Office of Oil and Gas.

 Timothy P. Roush
Signature

Professional Surveyor
Title

June 20, 2011
Date

SUBJECT WELL
J.A. Bode No.4
47-017-2193-P



Section of
Oxford & New Milton
7.5' Quadrangles
SCALE 1"=1000'