

LATITUDE 39°22'30"

LONGITUDE 80°35'00"



7.5 OGIS topo location

7.5' 10c	<u>2.695</u>	15' 10c	<u>2.695</u>
	<u>1.19W</u>	(calc.)	<u>1.19W</u>

Company _____

Farm _____

Elevation top est 1365'
Centerpoint c

Quad SALEM 7 1/2'

County DOORLOGE

District MCCLELLAN

WELL LOCATION MAP

File No. 017-2175

Lewis

THE MANHATTAN LIGHT & HEAT CO

LOCATION FOR WELL No. 1932

Lease No. 017 for 10 Acres, of Seebaldia Borough 1st District.

DESCRIPTION

Well No. on farm of VAS R BOYCE et al
McDelland Dis't. Twp. Doddridge County W Va
250 feet from West line of W DAVIS Farm
378 feet from South line of A HARRY Farm
389 feet from North line of A H SADDLER Farm
feet of well on Farm.

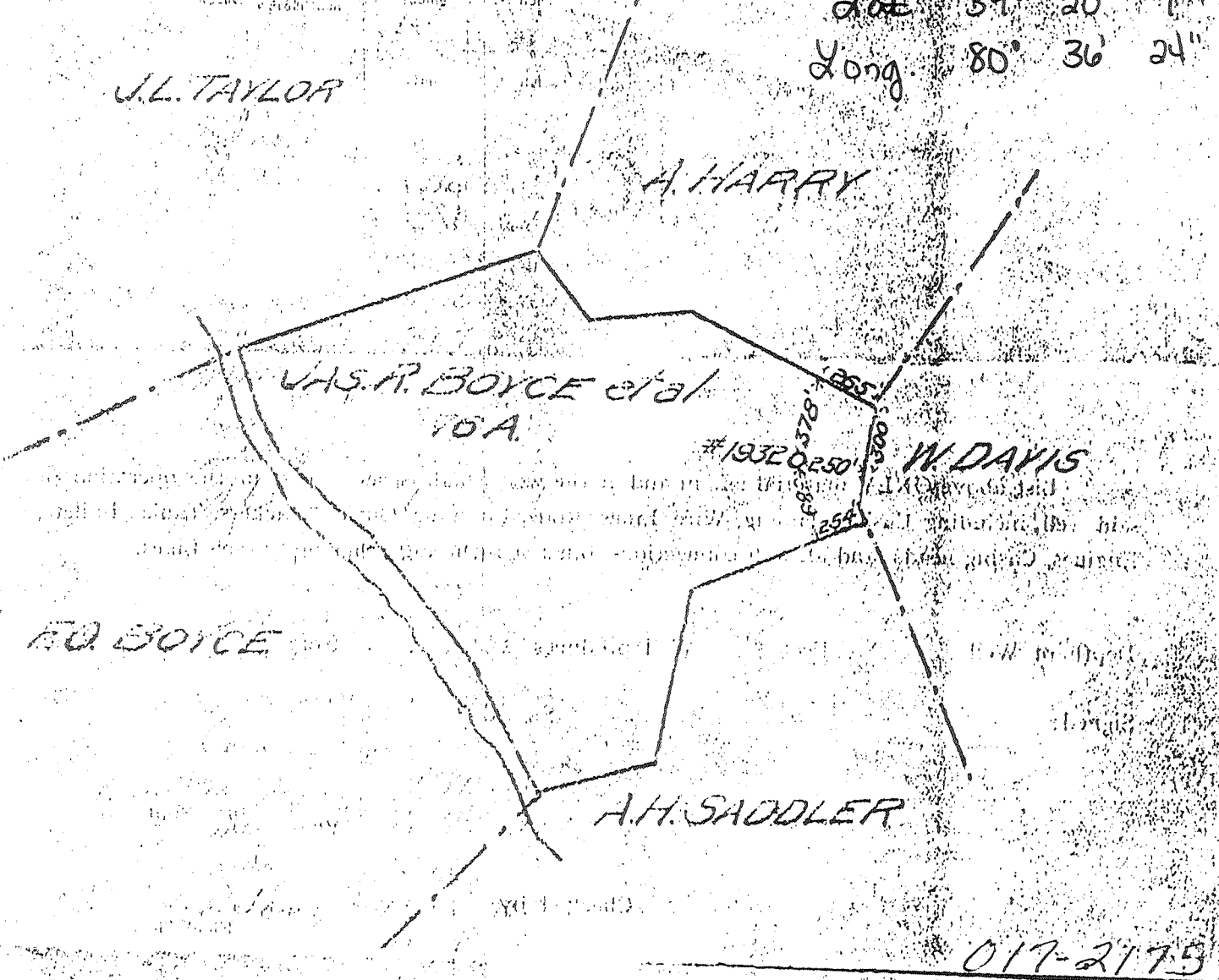
As shown on sketch below. Scale of sketch: 1" equals 500 feet

Location made March 30, 1915 Signed F. F. Murdock Engineer
Reservation around Buildings, 100 Feet. C. E. Baker Foreman

SPECIAL CONDITIONS:—

Lot 39° 20' 7"
Long. 80° 36' 24"

J. L. TAYLOR



017-2175

Chas E Baker Dis't. Super Pittsburgh, Pa., March 21, 1915

You are hereby authorized to commence work on above well at once, as well must be commenced by March 21, 1915, and must be completed by August 1, 1915.

All charges for labor and material incident to above well must be charged to this Well No. 1932, and when work is completed report must be filled out on reverse side of this sheet and forwarded to Pittsburgh Office. Retain one copy of this order for your files.

Approved: J. L. Taylor

C. E. Baker

The Manufacturers Light and Heat Co.

Farmers Bank Building, Pittsburgh, Penna.

017-2175

Division

Record of Well No. 1932 on - *Yard R Boyce*

Farm *46* Ac

Field *McGleason*

District *Doddridge*

County *Wpa* St

Rig commenced 190 Completed 190

Drilling commenced *June 5* 1906 Completed *July 22* 1906

Cost per foot Contractor *F. Flint & Strother Co.* Address *Clarksburg*

Drillers' names *Harry Smith, Guy Campbell, Herman Morrison, Geo. Hunt*

BOILER

ENGINE

RIG

H. P.	No.	Name of Maker	H. P.	No.	Name of Maker	New	Old	Height	Name of Builder
							<i>old</i>	<i>84</i>	<i>Hines #12</i>

CONDUCTOR AND CASING USED IN DRILLING

Conductor	13 inch	10 inch	8 1/2 inch	6 3/4 inch	6 inch	5 1/2 inch	5 3-16 inch	5 inch	4 inch
<i>11'</i>		<i>27.6'</i>	<i>13.36'</i>	<i>22.77'</i>					

CONDUCTOR AND CASING LEFT IN WELL

Conductor	13 inch	10 inch	8 1/2 inch	6 3/4 inch	6 inch	5 1/2 inch	5 3-16 inch	5 inch	4 inch
<i>11'</i>		<i>27.6'</i>	<i>13.36'</i>	<i>22.77'</i>					<i>23.54'</i>

OIL WELL

GAS WELL

When Shot	Size of Torpedo	1st Day's Production	Tubing	Rods	Tanks	Size of Packer	Depth Set	Packed With	1st Minute's Pressure	Roct
						<i>6 3/8 x 3</i>	<i>2294</i>	<i>3</i>	<i>130</i>	<i>2</i>

FORMATION

Top Bottom Thickness

REMARKS

<i>Red Rock</i>	<i>Red soft</i>	0	50	50						
<i>Lime</i>	<i>White hard</i>	50	75	25						
<i>Slate</i>	<i>Black soft</i>	75	150	75						
<i>Grey Lime</i>	<i>Blue hard</i>	150	200	50					<i>Red Rock Red soft 200-220</i>	
<i>Grey Lime</i>	<i>White hard</i>	250	315	65					<i>Black soft 220-250</i>	
<i>Red Rock & "Slate"</i>	<i>soft</i>	315	450	135						
<i>Slate & Lime</i>	<i>White hard</i>	450	480	30						
<i>Lime</i>	<i>White hard</i>	500	545	45					<i>Slate Black soft 545-570</i>	
<i>Sand</i>	<i>White soft</i>	570	605	35						
<i>Sand</i>	<i>White soft</i>	605	623	18						
<i>Grey Lime</i>	<i>White hard</i>	625	696	71						
<i>Coal</i>	<i>Black soft</i>	696	699	3					<i>Maple town Coal</i>	
<i>Lime</i>	<i>White hard</i>	699	760	61						
<i>Lime</i>	<i>Blue hard</i>	760	800	40						
<i>Lime</i>	<i>White hard</i>	810	920	110						
<i>Sand</i>	<i>White hard</i>	930	975	45						
<i>Pittsburgh Coal</i>	<i>Black</i>	975	981	6						
<i>Sand</i>	<i>White hard</i>	981	1050	69						
<i>Lime</i>	<i>White hard</i>	1060	1100	40						
<i>Little Run hard Sand</i>		1310	1327	17					<i>Water - Hooper at 1318</i>	
<i>Big Winkard Sand</i>		1488	1550	62						
<i>Sand</i>		1575	1600	25						
<i>1st Salt Sand</i>		1620	1670	50						
<i>2nd " "</i>		1730	1750	20						
<i>Sand</i>		1832	1895	63					<i>Water 5 Barrels per hour</i>	
<i>Marion Sand</i>		2057	2112	55						
<i>sandy Lime</i>		2150	2180	30					<i>little water at 2175</i>	
<i>Little Lime</i>		2190	2215	25						
<i>Renick Case</i>		2215	2240	25						
<i>Big Lime</i>		2240	2290	50						
<i>Big Injun Sand</i>		2290							<i>Gas 2302' to 2314'</i>	
<i>Total Depth</i>			<i>2339</i>							

APPROVED

J. Fralby
General

017-2175

Water 5 Barrels per hour

little water at 2175

Gas 2302' to 2314'

Examined above information and measurements and found to be correct by

Examined and approved by

F. Flint & Strother Co. Contractor

Ch. Urbaker Superintendent of C

NOTE - The above blank must be filled out carefully by the Contractor with a complete and accurate record of the Well, and accompany, when presented for payment the bill for drilling.

All locations of casing and sand must be given by the contractor with the measurements for the depth of "Remarks" must be recorded in what sand at

Make no mention of the name of the contractor in the remarks.

Manufacturers Light & Heat Company

248 Fourth Ave., Pittsburgh, Pa.

Division **Sedalia W. Va.**

Record of Well No. **1932** on **J.R.&E. Boyce**

Farm **76**

Sedalia W. Va. Field **McClellan**

District **Doddridge** County **West Va.**

Rig Commenced **191** Completed **191**

Drilling Commenced **Feb 26, 1923** Completed **Mar 28, 1923**

Cost per foot **2.00** Contractor **Harry Moore** Address **Wellace West Va.**

Drillers' Names **Cecil Gaines and Earl Carpenter.**

BOILER

ENGINE

RIG

BOILER			ENGINE			RIG			
H. P.	No.	Name of Maker	H. P.	No.	Name of Maker	New	Old	Height	Name of Builder

CONDUCTOR AND CASING USED IN DRILLING

Conductor	13 inch	10 inch	8 1/2 inch	6 3/4 inch	6 1/2 inch	5 3/4 inch	5 1/2 inch	5 inch	4 inch	3 inch
		276		2277						

CONDUCTOR AND CASING LEFT IN WELL

Conductor	13 inch	10 inch	8 1/2 inch	6 3/4 inch	6 1/2 inch	5 3/4 inch	5 1/2 inch	5 inch	4 inch	3 inch

OIL WELL

GAS WELL

When Shot	Size of Torpedo	1st Day's Production	Tubing	Rods	Tanks	Size of Packer	Depth Set	Packed with	1st Minutes Pressure	Rock Pro
									12	65

FORMATION

Top

Bottom

Thickness

REMARKS

Big Injun	2290	2414	124	<i>White hard</i>
Berea Grit	2550	2635	85	<i>Gray hard</i>
Fifty Foot Sand	2785	2803	18	<i>Very hard</i>
Thirty foot sand	2906	2927	21	<i>White hard</i>
Gorden Strey sand	2995	3015	20	<i>White hard</i>
Gorden sand <i>White hard</i>	3070	3090	20	Gas @ 3076 to 3078, made 40/10 water thru 2" open
Fourth Sand " "	3110	3125	15	

017-2175

Examined above information and measurements and found to be correct by

Examined and approved by

Contractor

NOTE: The above blank must be filled out carefully by the Contractor, with a complete and accurate record of the Well, and accompany, when presenting the bill for drilling.
All formations and known sands must be given by their proper names, with steel line measurements, and under the head of "Remarks" must be recorded in what order at what depth Oil, Gas or Water was found, the quantity of same, the quality of the sand, and thickness of pay.
Make no memoranda of boiler and engine if owned by contractor.