

LATITUDE 39° 20' 00"



LONGITUDE 80° 55' 00"

7'5 OGIS topo location

| | | | |
|----------|--------------|---------|--------------|
| 7.5' loc | <u>0.625</u> | 15' loc | <u>0.625</u> |
| | <u>1.14W</u> | (calc.) | <u>1.14W</u> |

Company _____

Farm _____

Elevation topo est. 1225'
Centerpoint

Quad SALEM 7 1/2' SC

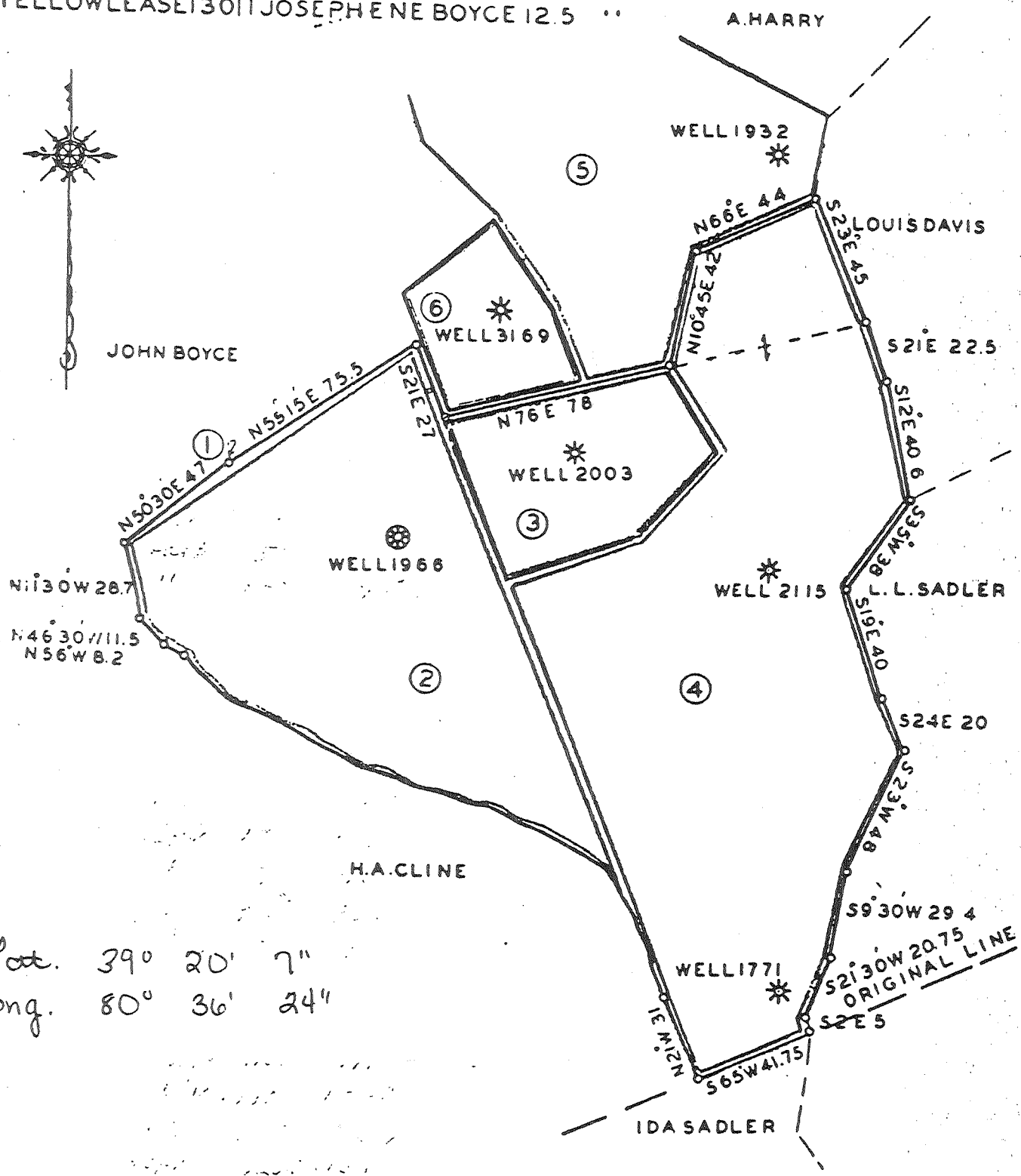
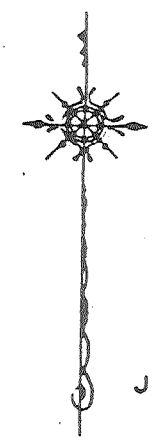
County DODDRIDGE

District MCCLELLAN

WELL LOCATION MAP

File No. 017-2174

- ① BLACK ORIGINAL MORTGAGE 256.5 ACRES
- ② BLUE LEASE 4626 J.R. BOYCE 46 "
- ③ BROWN LEASE 4627 " " 40 " SAME DESCRIPTION AS ②
- ④ RED LEASE 4642 " " 140 "
- ⑤ GREEN LEASE 4641 " " 76 "
- ⑥ YELLOW LEASE 13011 JOSEPHENE BOYCE 12.5 "



Lat. $39^{\circ} 20' 7''$
 Long. $80^{\circ} 36' 24''$

THE MANUFACTURERS LIGHT & HEAT CO.
 LEASES SITUATED IN
 M'CLELLAN DISTRICT DODDRIDGE CO. WVA.
 SCALE 1" = 50 RODS

3-11-33

017-2174

Y-6
631

Division

Record of Well No. 1771 on Gas R Boyce

017-2174

Field McClelland District Township

Farm 160

Acres

Doddridge County W Va

State

Rig Commenced July 25 1914

Completed Aug 2 1914

Drilling Commenced Aug 10 1914

Completed Dec 2 1914

Cost per foot \$1.20

Contractor Kellan & Moriarty

Address Salem W Va

Drillers' Names

John Heist Charley Cuswald

BOILER

ENGINE

RIG

| H. P. | No. | Name of Maker | H. P. | No. | Name of Maker | New | Old | Height | Name of Builder |
|-------|-----|---------------|-------|-----|---------------|-----|-----|--------|-----------------|
| | | | | | | yes | | 82 | J.W. Jenney |

CONDUCTOR AND CASING USED IN DRILLING

| Conductor | 13 inch | 10 inch | 8 1/2 inch | 8 inch | 6 1/2 inch | 6 inch | 6 3/8-16 inch | 5 inch | 4 inch |
|-----------|---------|---------|------------|--------|------------|--------|---------------|--------|--------|
| 16 | | 280 | 1308 | 2178 | | | 2929 | | |

CONDUCTOR AND CASING LEFT IN WELL

| Conductor | 13 inch | 10 inch | 8 1/2 inch | 8 inch | 6 1/2 inch | 6 inch | 6 3/8-16 inch | 5 inch | 4 inch | 3 inch |
|-----------|---------|---------|------------|--------|------------|--------|---------------|--------|--------|--------|
| 16 | | | | | 2178 | | 2929 | | | |

OIL WELL

GAS WELL

| When Shot | Size of Torpedo | 1st Day's Production | Tubing | Rods | Tanks | Size of Packer | Depth Set | Packed with | 1st Minute's Pressure | Rock Press |
|-----------|-----------------|----------------------|--------|------|-------|----------------|-----------|-------------|-----------------------|------------|
|-----------|-----------------|----------------------|--------|------|-------|----------------|-----------|-------------|-----------------------|------------|

FORMATION

Top Bottom Thickness

REMARKS

| | | | | | |
|----------------------|----------|------|-----|------------|--|
| Pittsburg coal. | 885 | 890 | 5 | Water 1235 | 14 barrels in one hour |
| Gas sand. | 1530 | 1600 | 70 | White hard | |
| 1st salt sand. | 1730 | 1805 | 75 | White hard | |
| Mason | 1980 | 2075 | 95 | White hard | |
| Little lime | 2117 | 2132 | 15 | Dark hard | |
| Pencil cave. | 2132 | 2145 | 13 | Black soft | |
| Big lime | 2145 | 2195 | 50 | White hard | |
| Big iron | 2195 | 2340 | 145 | White hard | |
| Gas. | | | | 2279 | twelve tenths water through two inch. |
| Berea grit dark hard | 2475 | 2500 | 25 | Dark hard | |
| Light sand. | 2680 | 2700 | 20 | White hard | |
| Whitely-foot | 2800 | 2825 | 25 | White hard | |
| Gordon stray | 2900 | 2920 | 20 | White hard | |
| Gordon | 2973 | 2993 | 20 | Gas 2980 | twelve tenths water through 2 in. |
| Fourth sand. | 3013 | 3024 | 11 | Gas 3019 | seventy six tenths water through - 2 in. |
| Total depth | 3038 ft. | | | | |

Gas in 4th sand 7/10 Water 2' per flow 10" 1st minute 6 5/8
= 425,000
Rock 105 lb. in 15 minutes

24 1/2 gal.

017-2174

Examined above information and measurements and found to be correct by Kellan & Moriarty Contractor.

Examined and approved by

NOTE-The above blank must be filled out carefully by the Contractor, with a complete and accurate record of the Well, and accompany, when presented for payment Superintendent of Co. All formations and known sands must be given by their proper name, with steel line measurements, and under the head of "Remarks" must be recorded in what sand and at what depth Oil, Gas or Water was found, the quantity of same, the quality of the sand, and the hours of pay. Make no memoranda of boiler and engine if owned by contractor.

Division _____ Company _____
 Record of Well No. 1771 on Geo. R. Boyce Farm 160 Acres
 Field _____ District Township _____ County _____ State _____
 Rig Commenced 19 _____ Completed 19 _____
 Drilling Commenced 19 _____ Completed 19 _____
 Contractor _____ Address _____
 Driller's Name _____

CASING AND TUBING RECORD

| | | | | | | | | |
|---------------|-----|-----|--------|----|--------|--------|----|----|
| Conductor | 13" | 10" | 8 1/4" | 7" | 6 1/2" | 5 1/8" | 4" | 3" |
| Used in Drig. | | | | | | | | |
| Left in Well | | | | | | | | |

PACKER RECORD

SHOOTING RECORD

| Size | Depth Set | Type Packer | Date | Type Explosive | Amount | DEPTH | | Volume Before Cu. Ft. | Vol. After |
|------|-----------|-------------|------|----------------|--------|-------|--------|-----------------------|------------|
| | | | | | | Top | Bottom | | |

VOLUME AND PRESSURE

| Date | Reading In Inches | Liquid | Size Orifice | Volume | Sand | PRESSURE IN MIN. | | | | | 24 Hr. R. P. | Max. R. P. |
|------|-------------------|--------|--------------|--------|------|------------------|---|----|----|----|--------------|------------|
| | | | | | | 1 | 5 | 10 | 30 | 60 | | |

TOTAL INITIAL OPEN FLOW

CUBIC FEET PER 24 HOURS

| FORMATION | TOP | BOTTOM | THICKNESS | REMARKS |
|----------------------------|------|--------|-----------|----------------------------|
| Clay Yellow soft | 0 | 50 | 50 | Slater & shells white soft |
| Sand White hard | 50 | 100 | 50 | Slater white soft |
| Lime White " | 100 | 175 | 75 | Slater & shells black hard |
| Red Rock Red soft | 175 | 275 | 100 | Slater & shells black hard |
| Lime White hard | 275 | 375 | 100 | Slater black soft |
| Slate White soft | 375 | 450 | 75 | Slater & shells black hard |
| Lime White hard | 450 | 500 | 50 | Slater black soft |
| Sand " soft | 500 | 600 | 100 | Slater black soft |
| Lime " hard | 600 | 785 | 185 | Slater black soft |
| Slate " soft | 785 | 885 | 100 | |
| Slate White " | 890 | 915 | 25 | |
| Sand " hard | 915 | 950 | 35 | |
| Slate black soft | 950 | 1025 | 75 | |
| Lime white hard | 1025 | 1100 | 75 | |
| Red Rock Red soft | 1100 | 1130 | 30 | |
| Blue slate blue soft | 1100 | 1190 | 60 | |
| Red Rock Red soft | 1190 | 1230 | 40 | |
| Sand white soft | 1230 | 1257 | 27 | |
| Slate white soft | 1257 | 1370 | 113 | |
| Slate black soft | 1370 | 1400 | 30 | |
| Lime white hard | 1400 | 1450 | 50 | |
| Slater & shells white soft | 1450 | 1530 | 80 | |
| Lime black hard | 1600 | 1620 | 20 | |
| Slate black soft | 1620 | 1650 | 30 | |
| Lime black hard | 1655 | 1680 | 25 | |
| Slater shells black hard | 1680 | 1730 | 50 | |
| Slate black hard | 1805 | 1905 | 130 | |
| Mayon white hard | 1905 | 1955 | 20 | |

Examined above information and measurements and found to be correct by

Examined and Approved by

Contractor

Field Superintendent

NOTE—The above blank must be filled out carefully by the contractor, with a complete and accurate record of the well, and accompany, when presented for payment of the bill for drilling. All formations and known sands must be given by their proper name, with steel line measurements, and under the head of up...