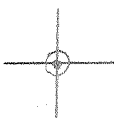


LATITUDE 39° 25' 00"

LONGITUDE 80° 35' 00"



T'5 OGIS topo location

7.5' loc, 2.80S
1.67W

15' loc 2.80S
(calc.) 1.67W

Company _____

Farm _____

Elevation top ext. 880'
Centerpoint c

Quad FOLSOM 7 1/2'

County DODDRIIDGE

District MCCLELLAN

WELL LOCATION MAP

File No. 017-2172

well no.

Manufacturers Light & Heat Co.

LOCATION FOR WELL No. 2004

Lease No. 6172 for 120 Acres, 22dalia District.

DESCRIPTION

Well No. 1 on farm of Elizabeth A Seckman et al

McKelland Dis't. Doddridge County W. Va

390 feet from South line of Robinson et al Farm

700 feet from East line of Dye Farm

feet from line of Farm

1100 feet West of well on (Examination) Farm

As shown on Sketch below.

Scale of sketch: 1" equals 320 feet

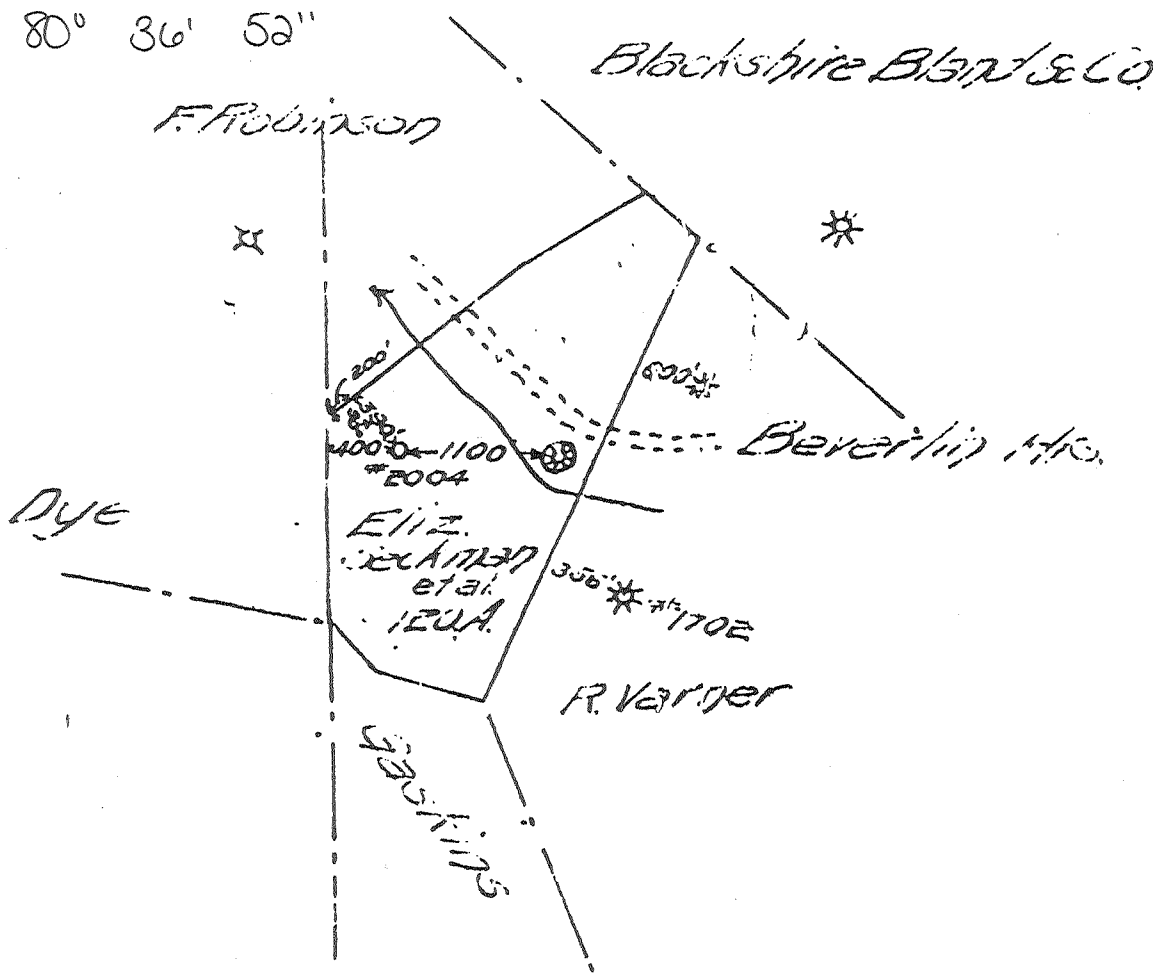
Location made Aug. 21, 1910

Signed F.F. MURDOCK, Engr. J.J. Foley, Genl. Supt. C.E. Baker, Foreman

Reservation around Buildings, 300 feet.

SPECIAL CONDITIONS:-

Lat. 39° 22' 38" Long. 80° 36' 52"



Roll - 2172

C.E. Baker - Dis't. Supt. Pittsburgh, Pa., Sept 11, 1910

Wallace, W. Va

You are hereby authorized to commence work on above well at once, as well must be commenced by at once 1910 and must be completed by as soon as possible 1910.

All charges for labor and material incident to above well must be charged to this Well No. 2004, and when work is completed report must be filled out on reverse side of this sheet and forwarded to Pittsburgh Office. Retain one copy of this order for your files.

617

Company

Division _____ 248 Fourth Ave., Pittsburgh, Penna.
 Record of Well No. 2004 on Eliza E. Jackson Farm 2.9 Acres
Sedalia No. 1 Field W. B. McClary District Derby County 17 State
 Rig Commenced Nov 25 1916, Completed Nov 3 1916
 Drilling Commenced Dec 21 1916, Completed Jan 25 1917
 Cost per foot _____ Contractor Flint & Strother Co. Address Clas...
 Drillers' Names J. J. Davisson, Clem Gattrell, W. H. Hurst

BOILER			ENGINE			RIG			
P.	No.	Name of Maker	H. P.	No.	Name of Maker	New	Old	Height	Name of Builder
								52'	Dietsch & Beard

CONDUCTOR AND CASING USED IN DRILLING									
Depth	13 inch	10 inch	8 1/4 inch	8 inch	6 1/2 inch	6 inch	5 3/16 inch	6 inch	4 inch
6'		225	1060	1821					

CONDUCTOR AND CASING LEFT IN WELL										
Depth	13 inch	10 inch	8 1/4 inch	8 inch	6 1/2 inch	6 inch	5 3/16 inch	6 inch	4 inch	3 inch
6'		42	1000	1821						2"

OIL WELL					GAS WELL					
When Shot	Size of Torpedo	1st Day's Production	Tubing	Rods	Tanks	Size of Packer	Depth Set	Packed with	1st Minute's Pressure	1st Rock Pressure
						6 3/8 x 2"	1631	2"	81	182
FORMATION			Top	Bottom	Thickness	REMARKS				
fine, Red Rock			to	238		10' casing parted leaving				
fine, Slate & Lime			238	244	6	42' in hole.				
Pittsburgh Coal			244	507	263					
fine, Slate & Red Rock			507	516	9					
fatty Dunkard			516	980	464	Poor copy				
fatty			980	1047	67					
fatty Dunkard			1047	1067	20	black soft				
fatty			1067	1130	63					
fine Sand			1130	1242	112	white hard				
fatty Sand & Lime			1242	1395	153					
fatty Salt Sand			1395	1460	65	3 Bails of water for hour at 1408				
fatty			1460	1472	12	black soft				
fatty Salt Sand			1472	1565	93	white hard				
fatty & Shells			1565	1590	25	white hard				
fatty Lime			1590	1630	40	black soft				
fatty			1630	1652	22	white hard				
fatty Sand			1652	1712	60	Gas at 165.5				
fatty Red Rock, Slate & Shells			1712	1748	36	30/10 Water				
fatty Lime			1748	1773	25	white hard				
fatty Coal			1773	1792	19	black soft				
fatty Lime			1792	1837	45	white hard				
fatty Injun Sand			1837	1955	118	Gas 1858'				
fatty			1955	1962	7'	Total 210. 37/10 pressure thru 2' tubing				
to gas depth				1962 1/2						

OK C. S. Baker
 017-2172

Examined above information and measurements and found to be correct by _____
 Examined and approved by _____
 Contractor _____ Superintendent of Co. _____
 NOTE—The above blank must be filled out carefully by the Contractor, with a complete and accurate record of the Well, and accompany, when presented for payment the bill for drilling.
 All formations and known sands must be given by their proper name, with steel line measurements, and under the head of "Remarks" must be recorded in what sand and at what depth Oil, Gas or Water was found, the quantity of same, the quality of the sand, and thickness of pay.
 Make no memoranda of boiler and engine if owned by contractor.