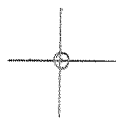


LATITUDE 39° 20' 00"

00° 53' 08" LONGITUDE



T'5 OGIS topo location

7.5' loc, 1.68 S
1.12 W

15' loc 1.68 S
(calc.) 1.12 W

Company _____

Farm _____

Elevation topo est. 1230'
Centerpoint SC

Quad SALEM 7 1/2'

County OODRIDGE

District GRANT

WELL LOCATION MAP

File No. 017-2162

Lans

The Manufacturers Light & Heat Co

LOCATION FOR WELL No. 1933

Lease No. 0007 for 48 Acres, Sevalia District

DESCRIPTION

Well No. 1 on farm of Edward Davis

Grant Dist. Top Doddridge County W Va

350 feet from West line of Flannigan Bros. Farm

644 feet from South line of H.B. Davis et al. Farm

feet from _____ line of _____ Farm

feet _____ of well on _____ Farm

As shown on sketch below. Scale of sketch: 1" equals 8250 feet.

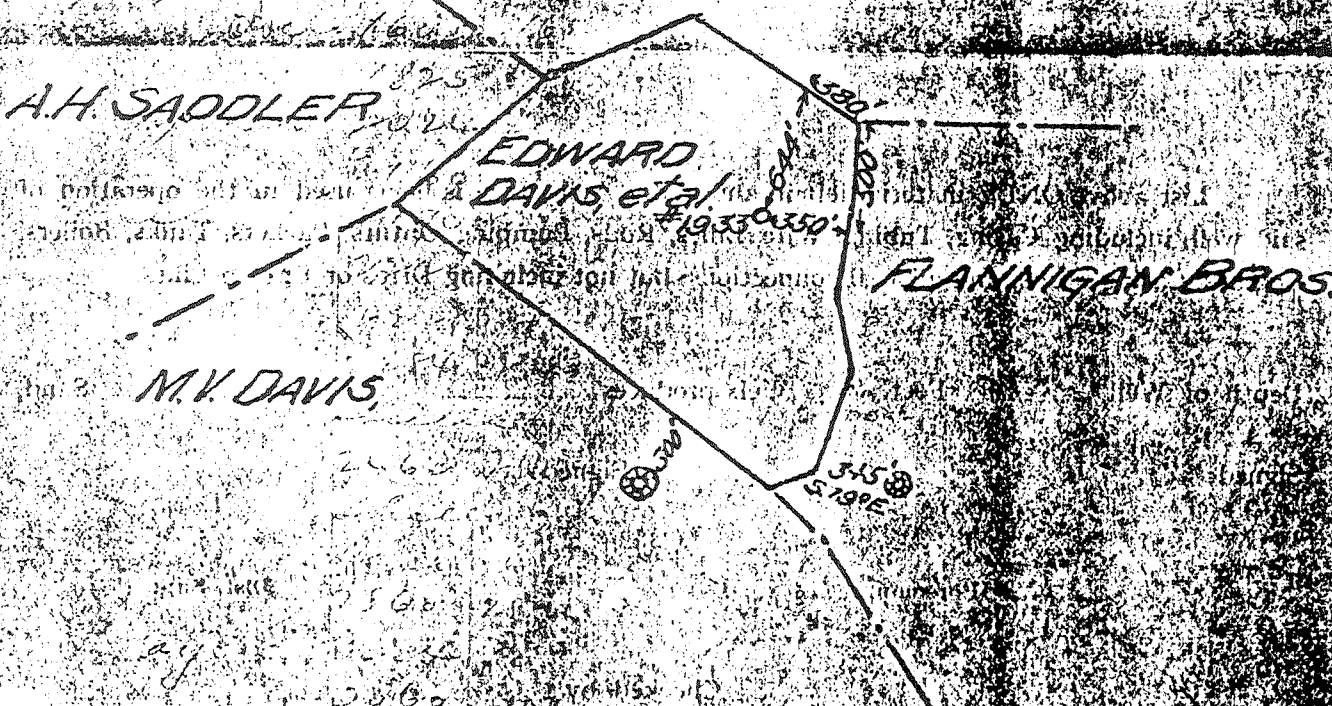
Location made March 30, 1916. Signed FF Murdock Esqr

Reservation around Buildings, 300 Feet, CE Baker Foreman

SPECIAL CONDITIONS:—

Lat 39° 18' 29"
Long 80° 36' 19"

Handwritten notes:
13.85 (L. L. Sadler) H.B. DAVIS owns royalty



Handwritten: 017-2162

Chas E Baker Dis't. Supt. Pittsburgh, Pa. March 30, 1916

Wallace, W Va

You are hereby authorized to commence work on above well at once as well must be commenced by May 31, 1916, and must be completed by as soon as possible, 1916.

All charges for labor and material incident to above well must be charged to this Well No. 1933, and when work is completed report must be filled out on reverse side of this sheet and forwarded to Pittsburgh Office. Retain one copy of this order for your files.

APPROVED

APPROVED

#6004

The Manufacturers Light and Heat Co.

Farmers Bank Building, Pittsburgh, Penna.

Division

Record of Well No. 1933

Field

on Edward Davis
Grant

District Township

Dodd

017-2162

Farm

48

County

Wra

Sta

Rig commenced

190

Completed

190

Drilling commenced

May 24

1906

Completed

July 30

1906

Cost per foot

Contractor

Smith & Strother Co

Address

Clarksburg

Drillers' names

Od Snyder, M Gerstner

BOILER

ENGINE

RIG

H. P.	No.	Name of Maker	H. P.	No.	Name of Maker	New	Old	Height	Name of Builder
						new		84	Revere & Berr...

CONDUCTOR AND CASING USED IN DRILLING

Conductor	13 inch	10 inch	8 1/2 inch	6 3/4 inch	6 1/2 inch	6 3/8 inch	6 3-16 inch	5 inch	4 inch	2"
16'		212'	1469	2249			2888'			

CONDUCTOR AND CASING LEFT IN WELL

Conductor	13 inch	10 inch	8 1/2 inch	6 3/4 inch	6 1/2 inch	6 3/8 inch	6 3-16 inch	5 inch	nch	3 inch	2"
16'				2249			2888'				

OIL WELL

GAS WELL

When Shot	Size of Torpedo	1st Day's Production	Tubing	Rods	Tanks	Size of Packer	Depth Set	Packed With	1st Minute's Pressure	Rock Press
						6 5/8 x 2	2852	2	60	14

FORMATION

Top Bottom Thickness

REMARKS

Natural coal	420	426	6							
Pittsburgh Coal soft	950	956	6							
Hurry Up Sand hard	979	1019	40							
Little Sandstone close	1385	1440	55							
Big Sandstone hard	1467	1520	53							
Gas Sand close	1603	1665	62							
Salt Sand	1825	1939	114							
Marion Sand hard	2024	2150	126							Water 186' 4 barrels per hour
Coal	2160	2165	5							
Little Lime	2190	2220	30							
Penick Cove	2220	2228	8							
Big Lime	2228	2284	56							
Big Injun	2284	2389	105							Gas at 2286' & 2389'
Squaw										
Berea	2463	2584	121							
Gantz										
Fifty Foot										
Thirty Foot	2860	2874	14							Gas at 2865'
Gordon Stray	3024	3038	14							Gas 14 1/10 Min. in 2" Gas at 302'
Gordon Sand	3060	3073	13							Gas at 3067' Oil at 3070'
Fourth Sand	3095	3101	6							
Total Depth		3113								

017-2162

31/10
E. A. ...

Examined above information and measurements and found to be correct by

Examined and approved by

Smith & Strother Co. Contractor

J. H. ... Superintendent of Co.

NOTE.- The above blank must be filled out carefully by the Contractor with a complete and accurate record of the Well and accompany when presented for payment. All formations and known sands must be given by their proper name, with steel line measurements, and under the head of "Remarks" must be recorded at what depth Oil, Gas or Water was found, the quantity of same, the...