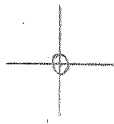


LATITUDE 39° 20' 00"



00° 08' 00" LONGITUDE

7'5 OGIS topo location

7.5' 10c, 1.06S  
1.71W

15' 10c 1.06S  
(calc.) 1.71W

Company \_\_\_\_\_

Farm \_\_\_\_\_

Elevation topo est. 1100'  
Centerpoint se

Quad SALEM 7 1/2'

County DODDRIIDGE

District GRANT

WELL LOCATION MAP

File No. 017-2161

The McGraw-Hill Electric Light & Heat Co.

LOCATION FOR WELL No. 1872

Lease No. 2785 for 5.7 Acres, 50000 District.

DESCRIPTION

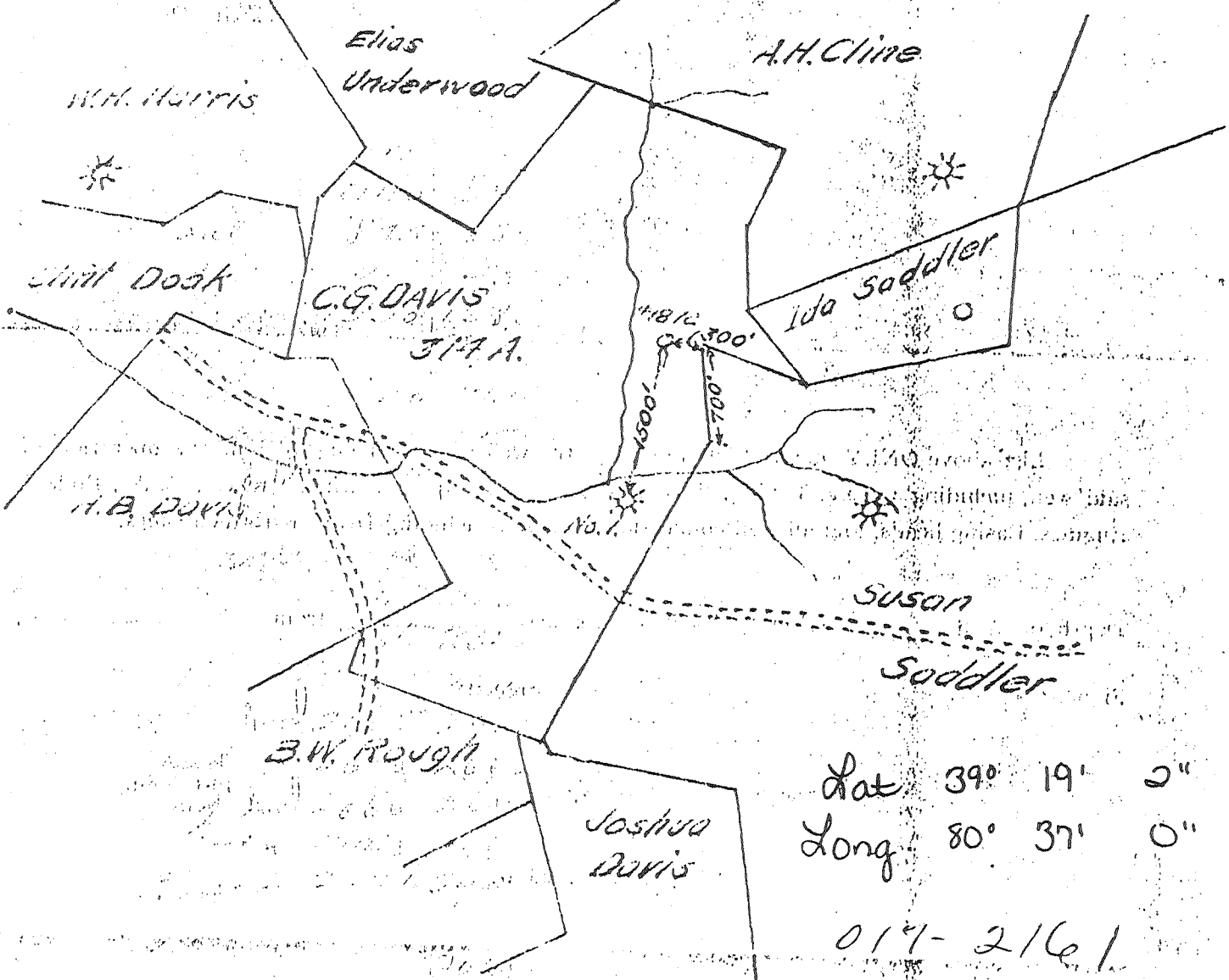
Well No. 2 on farm of C.G. Davis Grant Dis't. Twp. Washington County W. Va. 1500 feet from north line of main well #1 Farm. 500 feet from west line of Susan Suddler Farm. feet from line of Farm. feet of well on Farm.

As shown on sketch below. Scale of sketch: 1" equals 1320 feet.

Location made Oct. 22, 1915 Signed C.E. Baker Foreman

Reservation around Buildings, Acres Feet

SPECIAL CONDITIONS: - Working Agreement No. 332 S.P. Davis oil



C.E. Baker Dist Supt Pittsburgh, Pa., Nov. 2, 1915

You are hereby authorized to commence work on above well at once, as well must be commenced by [blank] 191 [blank], and must be completed by [blank] 191 [blank].

All charges for labor and material incident to above well must be charged to this Well No. 1872, and when work is completed report must be filled out on reverse side of this sheet and forwarded to Pittsburgh Office. Retain one copy of this order for your files.

Lease 2185

# The Manufacturers Light and Heat Co.

Division *Gas*

Farmers Bank Building, Pittsburgh, Penna.

Record of Well No. 1872

on *to G. David*

017-2161

314

Field *Grant*

District *Woodbridge*

*Woodbridge*

County *Wa*

Act

Rig commenced

190

Completed

190

Drilling commenced

*Dec 23*

1905

Completed

*March 25*

1906

Cost per foot \$ *1.05*

Contractor

*Flinn & Stothew Co*

Address

*Clarksburg*

Drillers' names

*R. D. Kestler, Chas. Nicholls*

**BOILER**

**ENGINE**

**RIG**

H. P.	No.	Name of Maker	H. P.	No.	Name of Maker	New	Old	Height	Name of Builder
							<i>S.H.</i>	<i>82</i>	<i>Dumas &amp; Bee</i>

**CONDUCTOR AND CASING USED IN DRILLING**

Conductor	13 Inch	10 Inch	8 1/2 Inch	8 Inch	6 1/2 Inch	6 3/4 Inch	6 3/16 Inch	6 Inch	4 Inch
		<i>500'</i>	<i>1393'</i>	<i>2192'</i>			<i>29.75'</i>		

**CONDUCTOR AND CASING LEFT IN WELL**

Conductor	13 Inch	10 Inch	8 1/2 Inch	8 Inch	6 1/2 Inch	6 3/4 Inch	6 3/16 Inch	6 Inch	3 Inch
				<i>2193'</i>			<i>29.75'</i>		

**OIL WELL**

**GAS WELL**

When Shot	Size of Torpedo	1st Day's Production	Tubing	Rods	Tanks	Size of Packer	Depth Set	Packed With	1st Minute's Pressure	Rock Pr / Hr
										<i>110</i>

**FORMATION**

Top Bottom Thickness

**REMARKS**

<i>Sand</i>	<i>375</i>									
<i>Native Coal</i>	<i>340</i>	<i>342</i>	<i>2</i>							<i>20 Barrels Water</i>
<i>Pittsburgh Coal</i>	<i>875</i>	<i>881</i>	<i>6</i>							
<i>Hurry up Sand</i>	<i>900</i>	<i>930</i>	<i>30</i>							
<i>Gas Sand</i>	<i>1550</i>	<i>1580</i>	<i>30</i>							
<i>Water 1st Oil Sand</i>		<i>1647</i>								<i>Half full.</i>
<i>2nd Salt Sand</i>	<i>1720</i>	<i>1798</i>	<i>78</i>							
<i>Sand hard</i>	<i>1810</i>	<i>1975</i>	<i>165</i>							
<i>Red Rock soft</i>	<i>1975</i>	<i>1990</i>	<i>15</i>							
<i>Little Lime hard</i>	<i>2110</i>	<i>2125</i>	<i>15</i>							
<i>Pencil Cove soft</i>	<i>2138</i>	<i>2148</i>	<i>10</i>							
<i>Big Lime</i>	<i>2148</i>	<i>2206</i>	<i>58</i>							
<i>Big Injion</i>	<i>2206</i>	<i>2342</i>	<i>136</i>							<i>Gas at 222.5' and 226.5'</i>
<i>Berea Brit</i>	<i>2430</i>	<i>2490</i>	<i>60</i>							
<i>Gantz Sand hard</i>	<i>2498</i>	<i>2520</i>	<i>22</i>							
<i>Fifty Foot Sand</i>	<i>2670</i>	<i>2688</i>	<i>18</i>							
<i>Thirty Foot Sand hard</i>	<i>2866</i>	<i>2881</i>	<i>15</i>							
<i>Gray Sand Gordon</i>	<i>2948</i>	<i>2962</i>	<i>14</i>							
<i>Gordon Sand hard</i>	<i>2971</i>	<i>2987</i>	<i>16</i>							<i>Gas 2982' 10' 10" water in 2"</i>
<b>Total Depth</b>		<i>3056</i>								

*corrected*

017-2161

Examined and approved by

*Flinn & Stothew Co.*

Examined and approved by

NOTE.—The above blank must be filled out carefully by the Contractor with a complete and accurate record of the Well and accompany, when presented for the bill for drilling.