

WW-7  
8-30-06



West Virginia Department of Environmental Protection  
Office of Oil and Gas  
**WELL LOCATION FORM: GPS**

API: 47-017-02154 WELL NO.: WV 121521 (Maxwell D-3)

FARM NAME: L. Maxwell

RESPONSIBLE PARTY NAME: EQT Production Company

COUNTY: Doddridge DISTRICT: West Union 8

QUADRANGLE: West Union 7.5' 671

SURFACE OWNER: Chad W. Johnson

ROYALTY OWNER: Phyllis J. Davis, et al.

UTM GPS NORTHING: 4349089

UTM GPS EASTING: 521052 GPS ELEVATION: 330 m (1084 ft)

The Responsible Party named above has chosen to submit GPS coordinates in lieu of preparing a new well location plat for a plugging permit or assigned API number on the above well. The Office of Oil and Gas will not accept GPS coordinates that do not meet the following requirements:

- Datum: NAD 1983, Zone: 17 North, Coordinate Units: meters, Altitude: height above mean sea level (MSL) – meters.
- Accuracy to Datum – 3.05 meters
- Data Collection Method:  
Survey grade GPS  : Post Processed Differential   
Real-Time Differential   
Mapping Grade GPS  : Post Processed Differential   
Real-Time Differential

4. Letter size copy of the topography map showing the well location.

I the undersigned, hereby certify this data is correct to the best of my knowledge and belief and shows all the information required by law and the regulations issued and prescribed by the Office of Oil and Gas.

Stephenson  
Signature

PS # 2180  
Title

12/11/14  
Date

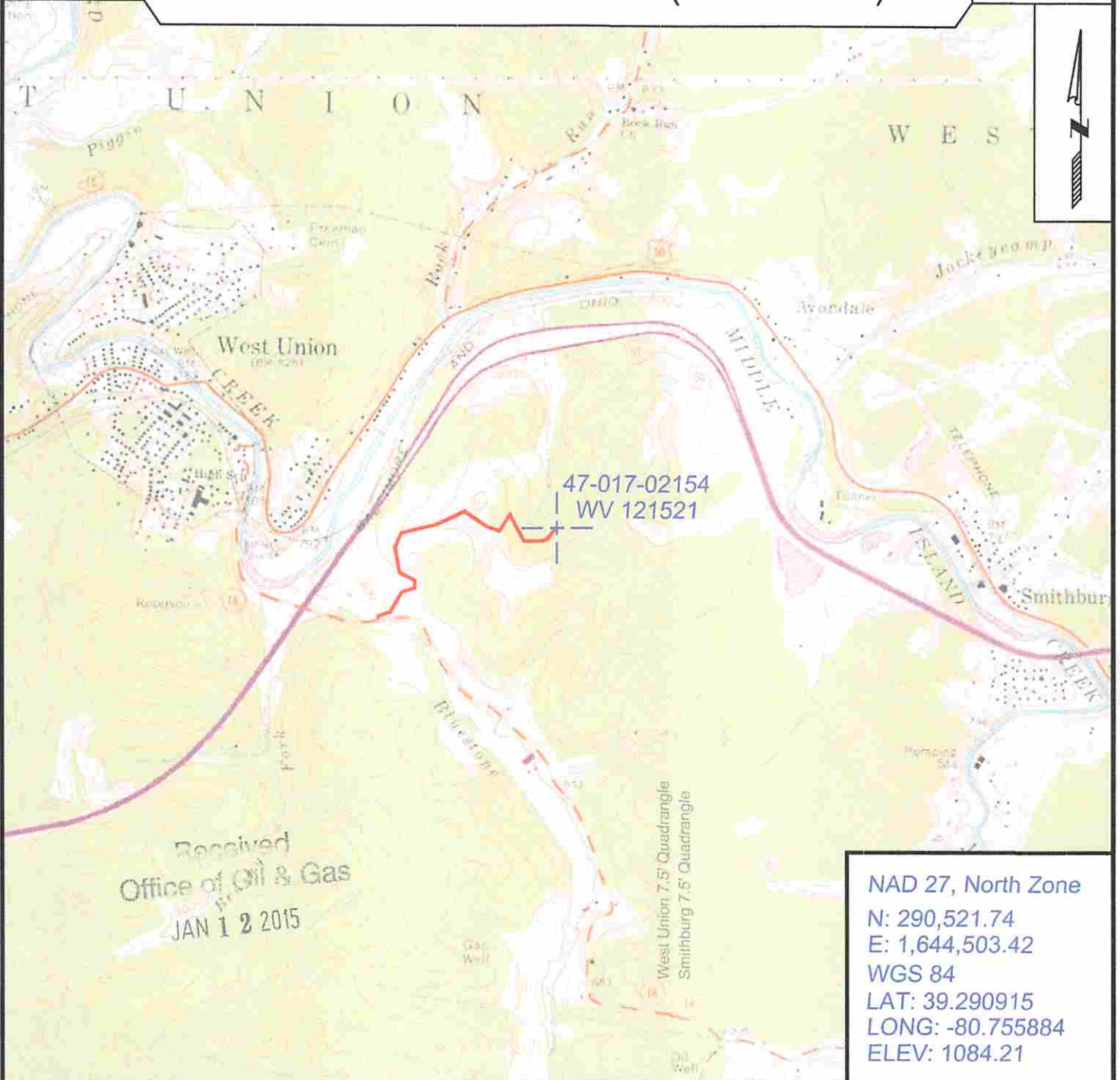
Received  
Office of Oil & Gas

1702154P

Topo Quad: West Union 7.5' Scale: 1" = 2000'  
 County: Doddridge Date: October 31, 2014  
 District: West Union Project No: 67-30-00-08

47-017-02154 WV 121521 (Maxwell D-3)

Topo



SURVEYING AND MAPPING SERVICES PERFORMED BY:

**ALLEGHENY SURVEYS, INC.**

1-800-482-8606  
 237 Birch River Road  
 Birch River, WV 26610  
 PH: (304) 649-8606  
 FAX: (304) 649-8608

PREPARED FOR:

**EQT Production Company**

P.O. Box 280  
 Bridgeport, WV 26330