

1702093P

WW-7
8-30-06



West Virginia Department of Environmental Protection
Office of Oil and Gas
WELL LOCATION FORM: GPS

API: 47-017-02093 WELL NO.: WV 604949 (John Coulehan #4949)

FARM NAME: John Coulehan

RESPONSIBLE PARTY NAME: EQT Production Company

COUNTY: Doddridge DISTRICT: West Union 8

QUADRANGLE: Smithburg 7.5' well

SURFACE OWNER: Key Oil Company, et al.

ROYALTY OWNER: Franklin L. Butler, et al.

UTM GPS NORTHING: 4350911

UTM GPS EASTING: 524218 GPS ELEVATION: 373 m (1226 ft)

The Responsible Party named above has chosen to submit GPS coordinates in lieu of preparing a new well location plat for a plugging permit or assigned API number on the above well. The Office of Oil and Gas will not accept GPS coordinates that do not meet the following requirements:

1. Datum: NAD 1983, Zone: 17 North, Coordinate Units: meters, Altitude: height above mean sea level (MSL) – meters.
2. Accuracy to Datum – 3.05 meters
3. Data Collection Method:
Survey grade GPS : Post Processed Differential
Real-Time Differential
Mapping Grade GPS X: Post Processed Differential X
Real-Time Differential
4. **Letter size copy of the topography map showing the well location.**

Received
Office of Oil & Gas
JAN 12 2015

I the undersigned, hereby certify this data is correct to the best of my knowledge and belief and shows all the information required by law and the regulations issued and prescribed by the Office of Oil and Gas.

Steph Brown
Signature

PS # 2180
Title

12/9/14
Date

Topo Quad: Smithburg 7.5'

Scale: 1" = 2000'

County: Doddridge

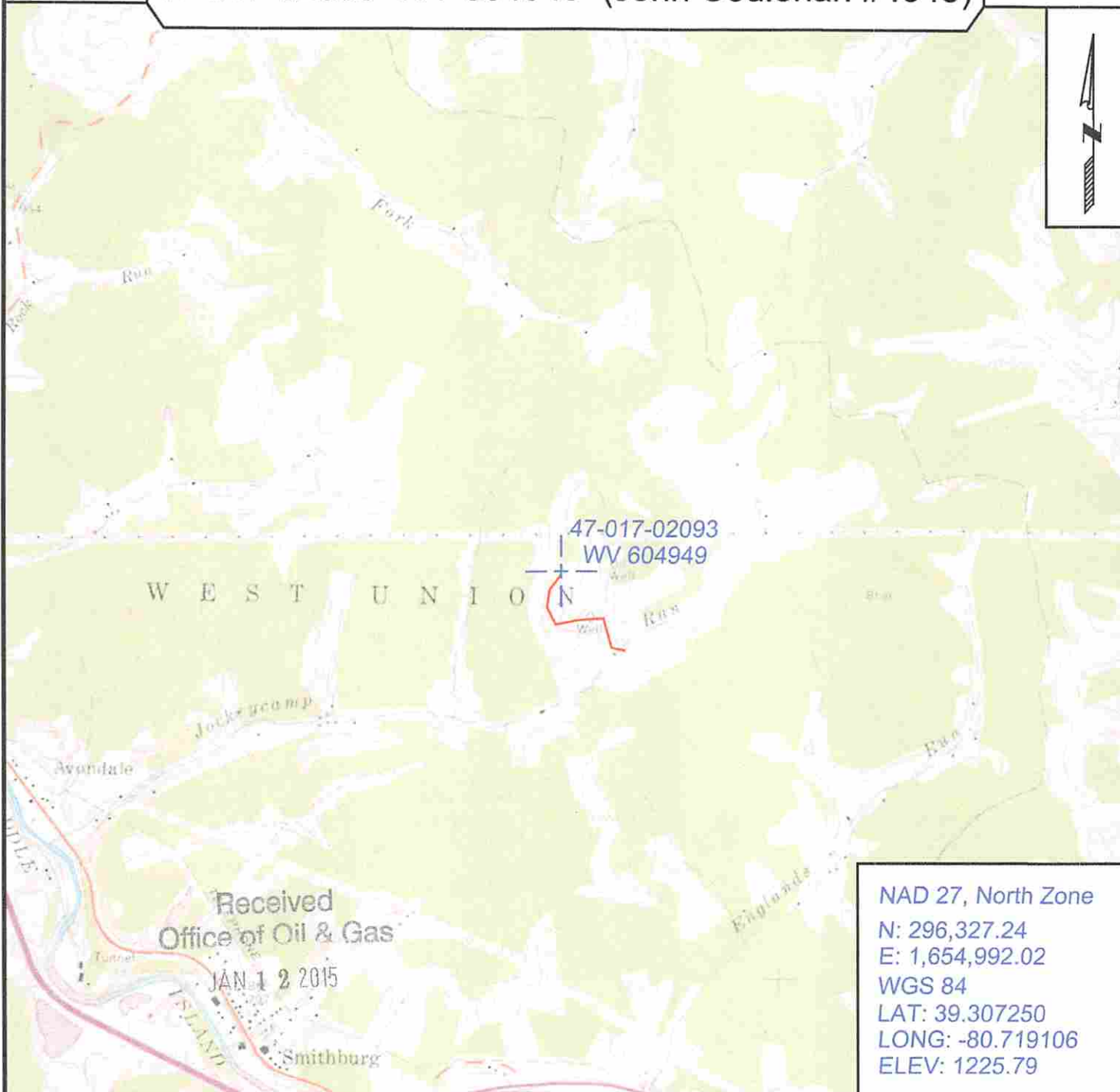
Date: October 27, 2014

District: West Union

Project No: 67-30-00-08

47-017-02093 WV 604949 (John Coulehan #4949)

Topo



Received
Office of Oil & Gas
JAN 12 2015

NAD 27, North Zone
N: 296,327.24
E: 1,654,992.02
WGS 84
LAT: 39.307250
LONG: -80.719106
ELEV: 1225.79



SURVEYING AND MAPPING SERVICES PERFORMED BY:
ALLEGHENY SURVEYS, INC.
1-800-482-8606
237 Birch River Road
Birch River, WV 26610
PH: (304) 649-8606
FAX: (304) 649-8608

PREPARED FOR:
EQT Production Company
P.O. Box 280
Bridgeport, WV 26330