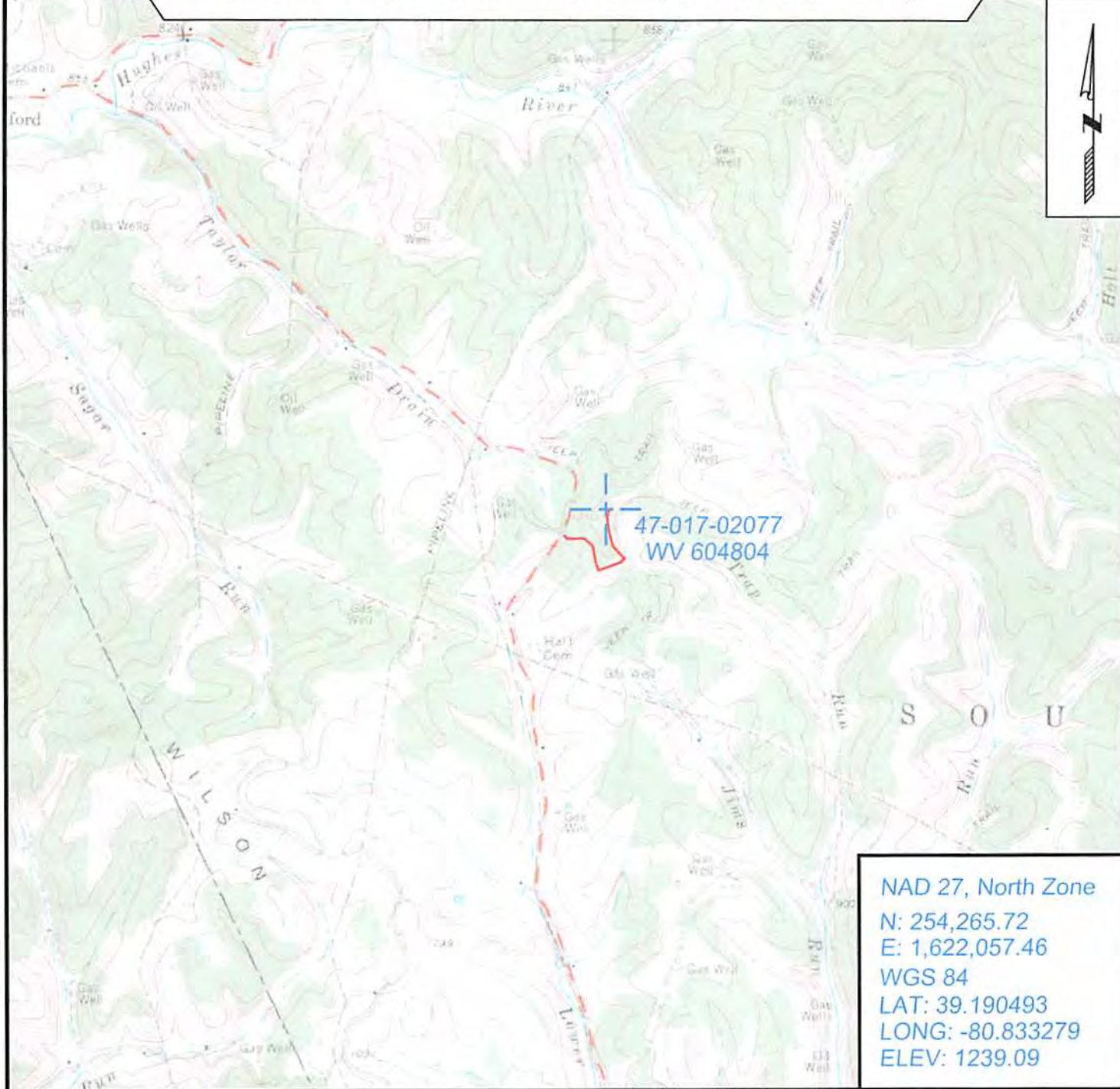


Topo Quad: Oxford 7.5' Scale: 1" = 2000'
 County: Doddridge Date: August 28, 2014
 District: South West Project No: 67-30-00-08

47-017-02077 WV 604804 (Maxwell #4804)

Topo



NAD 27, North Zone
 N: 254,265.72
 E: 1,622,057.46
 WGS 84
 LAT: 39.190493
 LONG: -80.833279
 ELEV: 1239.09



SURVEYING AND MAPPING SERVICES PERFORMED BY:
ALLEGHENY SURVEYS, INC.
 1-800-482-8606
 237 Birch River Road
 Birch River, WV 26610
 PH: (304) 649-8606
 FAX: (304) 649-8608

PREPARED FOR:
 Received
 Office of Oil & Gas
 NOV 20 2014
EQT Production Company
 P.O. Box 280
 Bridgeport, WV 26330