



Topo Quad: Center Point 7.5'

Scale: 1" = 2000'

47-017-02004P

County: Doddridge

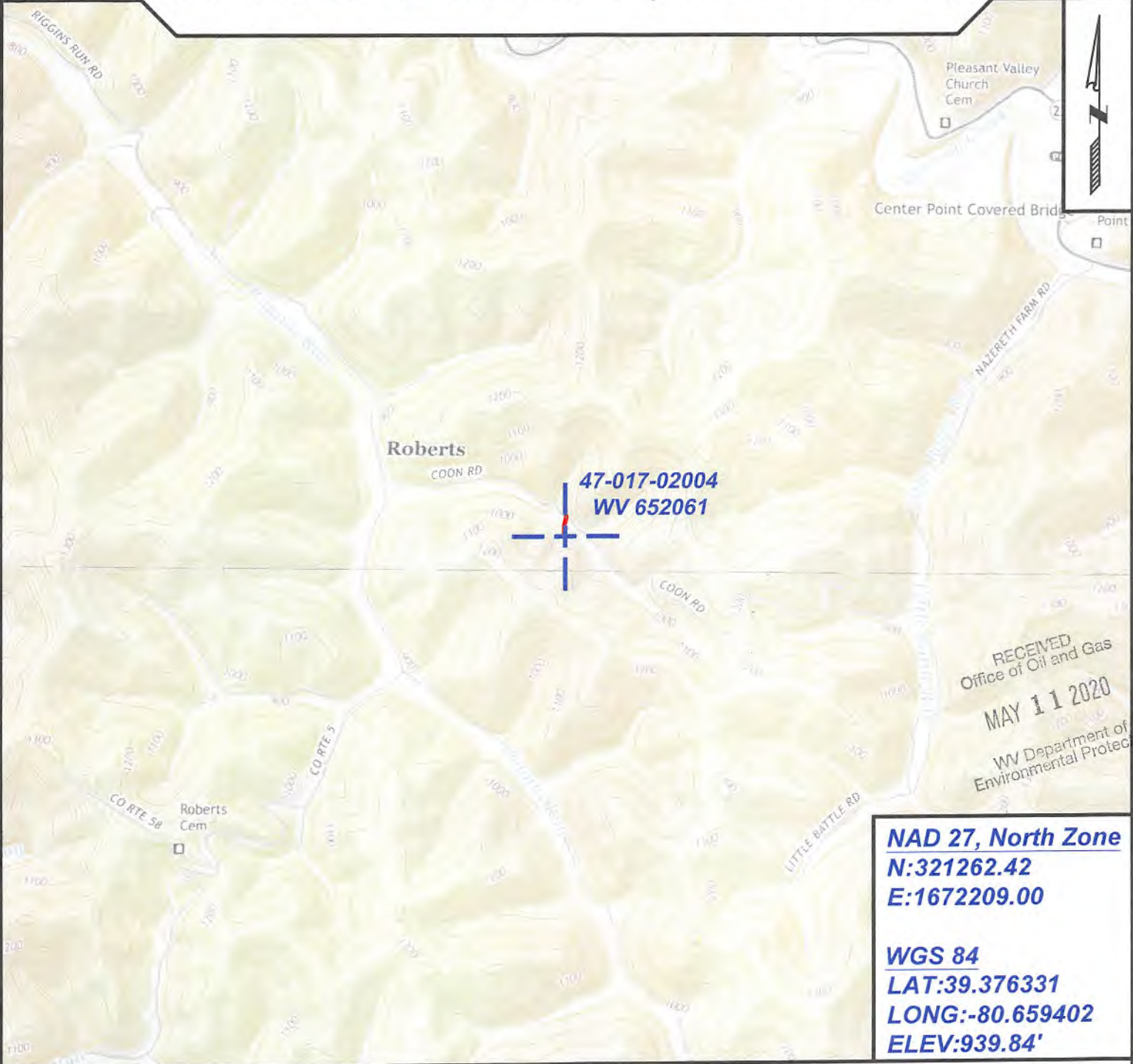
Date: April 29, 2020

District: McClellen

Project No: 67-30-00-08

# WV 652061 47-017-02004 (Jane Davis #690)

Topo



47-017-02004  
WV 652061

RECEIVED  
Office of Oil and Gas  
MAY 11 2020  
WV Department of  
Environmental Protection

**NAD 27, North Zone**  
**N:321262.42**  
**E:1672209.00**

**WGS 84**  
**LAT:39.376331**  
**LONG:-80.659402**  
**ELEV:939.84'**



SURVEYING AND MAPPING SERVICES PERFORMED BY:  
**ALLEGHENY SURVEYS, INC.**  
1-800-482-8606  
237 Birch River Road  
Birch River, WV 26610  
PH: (304) 649-8606  
FAX: (304) 649-8608

PREPARED FOR:  
**EQT Production Company**  
400 Woodcliff Drive  
Canonsburg, PA 15317