

Topo Quad: Folsom 7.5'

Scale: 1" = 2000'

County: Doddridge

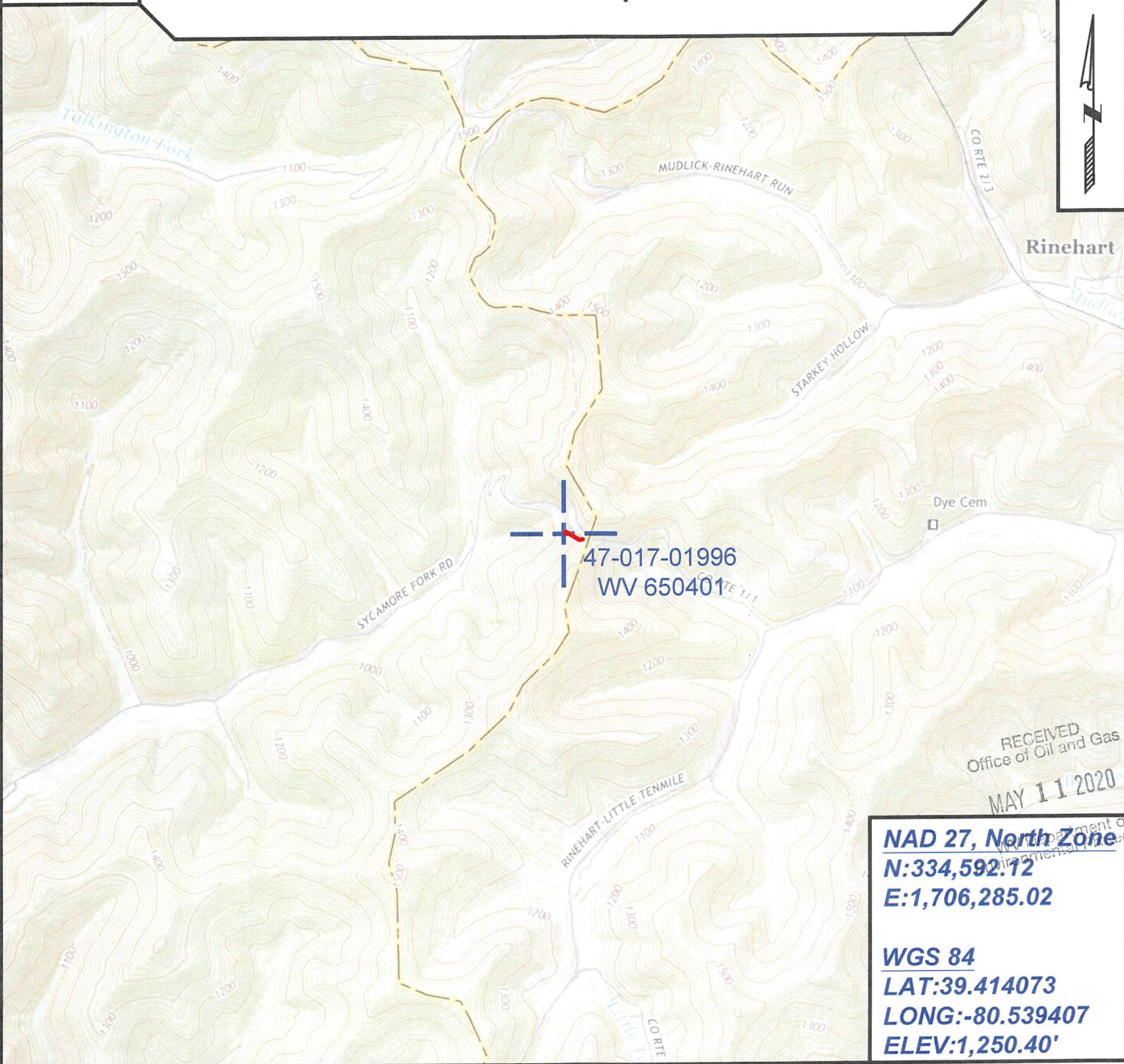
Date: February 10, 2020

District: McClellan

Project No: 67-30-00-08

# 47-017-01996 WV 650401 (A. J. Ashcraft #162)

Topo



RECEIVED  
Office of Oil and Gas  
MAY 11 2020

**NAD 27, North Zone**  
**N:334,592.12**  
**E:1,706,285.02**  
  
**WGS 84**  
**LAT:39.414073**  
**LONG:-80.539407**  
**ELEV:1,250.40'**



SURVEYING AND MAPPING SERVICES PERFORMED BY:  
**ALLEGHENY SURVEYS, INC.**  
1-800-482-8606  
237 Birch River Road  
Birch River, WV 26610  
PH: (304) 649-8606  
FAX: (304) 649-8608

PREPARED FOR:  
**EQT Production Company**  
400 Woodcliff Drive  
Canonsburg, PA 15317



