

LATITUDE 39° 22' 30"



80° 37' 36"

LONGITUDE

7'5 OGIS topo location

7.5' loc	<u>0.565</u>	15' loc	<u>3.445</u>
	0.99 W	(calc.)	<u>3.22 W</u>

Company _____

Farm _____

Elev. 1000' - 75' topo - k/a. 3/5/93
Centerpoint C

Quad SMITHBURG 7 1/2'

County DODDRIEGE

District McCLELLAN

WELL LOCATION MAP

File No. 017-1994

HOPE NATURAL GAS COMPANY

LOCATION FOR WELL No. 7462

27

Shelby DISTRICT

I. B. Allison

Farm on waters of

MCClellan

District

Doddridge

County, West Virginia

Lease No. 45012 Acres 99.5

N. S. 6 E. W. 2

Scale one inch equals 800' Location made in Pittsburgh

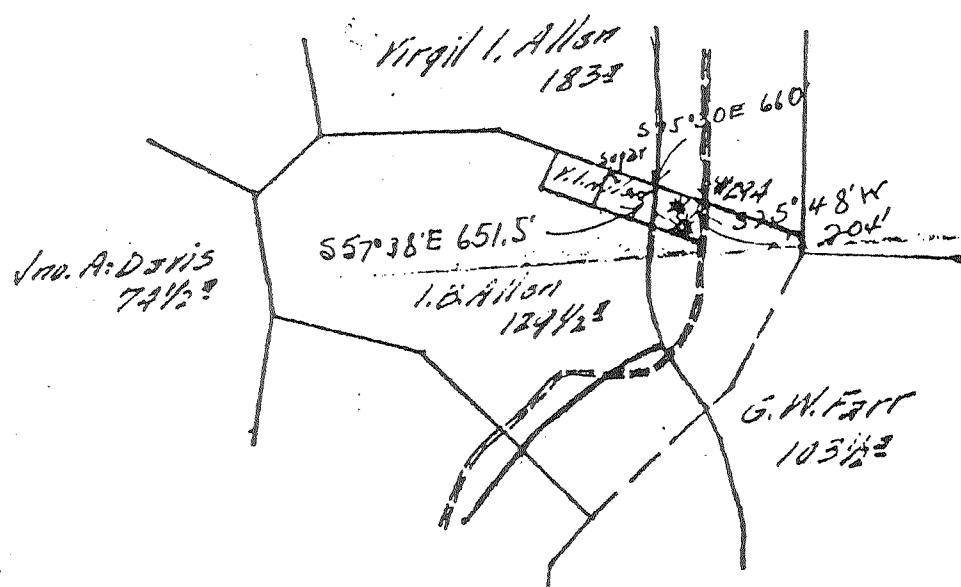
Sent to Clarksburg

Location to be Pittsburgh

Pittsburgh Copy

017-1994

vol 25



Field Book 494 Page 2

Elevation 897.6'

Well Book	<u>511</u>
Lease Book	
Wall Map	APR 29 30 J.C.H.
Libo Map	MAY 19 A. J. B.
Sheets	MAY 14 1930 H.H.A.

TITLE RESERVE

SPECIAL INSTRUCTIONS: COMPLETE WELL ON OR BEFORE

Same Lease on which Located Well No.

Location made April 23, 1930 by N. D. Linger As per plat, except as noted. On field m

April 26, 1930 Returned to Pittsburgh April 26, 1939

Location changed on account of

Authorized by _____ Date _____ Signed G. H. Bradley
OCF

Well No. 7463 ✓
 Farm Name I. B. Allen ✓
 Date First Work Done 7-13-53 ✓
 Commenced:
 Cleaning Out 7-21-53 ✓
 Drilling Deeper 8-6-53 ✓
 Abandoning

REPAIR RECORD

Salem District
 N. S. 6 E. - W. 2
 017-1994

Nature of Work Moving in tools ✓
 Completed:
 Cleaning Out 8-5-53 ✓
 Drilling Deeper 8-22-53 ✓
 Abandoning

CASING AND TUBING RECORD									
Size	Before Repairs		Pulled		Put in Well		After Repairs		Weight
	Tally	Steel Line	Tally	Steel Line	Tally	Steel Line	Tally	Steel Line	
7"	1637 ✓		None ✓		None ✓		1637 ✓		
1 1/2"	2014 ✓		2014 ✓		None ✓		None ✓	Old string	
1 1/2"	1870 ✓		1870 ✓		None ✓		None ✓		
1 1/2"	None ✓		None ✓		1905 ✓		1905 ✓	1880	13#

SHOOTING RECORD (Show if Open Shot or Tamped Shot)													
Date	Quarts	Top of Shell	Bottom of Shell	Diameter	Sand	TEST BEFORE SHOT			TEST AFTER SHOT			Test Taken After Shot No. Hours	By Whom Shot
						Reading	Liquid	Opening	Reading	Liquid	Opening		
8/53	20	2008	2016	4 1/2	Injun	30/10	W	1 1/8 FM	32/10	W	1" FM	48	Marietta Torpedo Co.
						(41.2 Mpf) ✓			(42.6 Mpf) ✓				

RECORD OF ANY DEEPER DRILLING					PACKER RECORD		
Formation	Top	Bottom	Oil at	Gas at	Size	Kind	Set At (Steel Line)
Commenced drilling at depth of		2000 ✓			5-3/16 x 6-5/8"	Hook Wall	1880
Additional gas 3.9 MCF	2025 ✓	2030 ✓	New Gas lay while drilling pocket.		3" x 5-3/16"	PACKER PULLED	
					Size 5-3/16 x 6-5/8"	Kind Hook Wall Anch.	
					OIL PRODUCTION		
					Estimated None	bbl. per day	Sand
					CLARKSBURG OFFICE ENTRIES		
					Repair Card	✓ U.S.N. 10/28/53	
					Well Card	✓ " "	" "
					Memo Book	✓ " "	" "
					Well Map	C.D.R. 11/3/53	
Total Depth		2100			Map Sheets	NOV 6-1953 R.L.T.	

VOLUME AND PRESSURE REPORT							
BEFORE CLEANING OUT (Take Test When Ready to Clean Out)							
VOLUME TEST							
Date of Test	Flow Meter or Open Flow	PITOT TUBE			CUBIC FEET	Sands Gas From	Time Blown
		Reading	Liquid Used	Opening			
8/20/53	✓ FM	Zero	Gas drowned out		None ✓	Injun	7 hrs

AFTER CLEANING OUT							
VOLUME TEST							
Date of Test	Flow Meter or Open Flow	PITOT TUBE			CUBIC FEET	Sands Gas From	Time Blown
		Reading	Liquid Used	Opening			
8/5/53	✓ FM	32/10	Water	3/4"	23.46 MCF	Injun ✓	7 hrs

AFTER DRILLING DEEPER							
VOLUME TEST							
Date of Test	Flow Meter or Open Flow	PITOT TUBE			CUBIC FEET	Sands Gas From	Time Blown
		Reading	Liquid Used	Opening			
8/18/53	✓ FM	32/10	Water	1"	42.6 MCF	Injun ✓	7 hrs

PRESSURE TEST															
Date of Test	Opening	Time												Hrs. Rock	
		1 Min.	2 Min.	3 Min.	4 Min.	5 Min.	6 Min.	7 Min.	8 Min.	9 Min.	10 Min.	30 Min.	60 Min.		
8/18/53	5 1/2" Casing	2#	3	4	5	6	7	8	9	10	11	22	27	-	-
	" Tubing														

Remarks: Pulled 3" tubing and 5 1/2" casing, ran another string 5 1/2", then drilled pocket, shot, cleaned out and shut in on 5 1/2" casing.

GODFREY L. CABOT, RECORD

Well No. District
 Located on Farm. No. of Well on this Farm
 District *Windsor* County *Windsor* State 19
 Location made First work done Oct. 4 - 1911

Rig Commenced Rig Completed
 Drilling Commenced *Oct 11 1911* Drilling Completed
 Rig Contractor Drilling Contractor
 Drillers Torpedo, L. D. DATE 19
 Tool Dressers Number of Quarts

FORMATION	TOP	BOTTOM	Water Found Depth	Gas or Oil Depth Found	OPEN FLOW	HOLE	REMARKS
Native Coal							<i>5 3/16 casing with anchor of Packer in Big line</i> <i>This is all record of this well that I could find</i> <i>5 3/16 casing set on</i> <i>first gas</i> <i>second gas</i>
Pittsburgh Coal							
Little Dunkard							
Big Dunkard							
Gas Sand							
First Salt							
Second Salt							
Maxon							
Little Lime							
Pencil Cave							
Big Lime							
Keener							
Big Injun							
Wain				1932 1998 1/2			
Berea							
Gantz							
Fifty Foot							
Thirty Foot							
Gordon Stray							
Gordon							
Fourth							
Fifth							
Bayard							
TOTAL DEPTH							

TUBING AND CASING RECORD

PACKER RECORD

Size	Charged to Well		Put in Well		Pulled Out		Left in Well		Left at Well Not in Use		Size	KIND	Depth Set	
	Feet	In.	Feet	In.	Feet	In.	Feet	In.	Feet	In.			Feet	In.
5 3/16	1638						1638							
							2014							

NOTE—If 10" casing cemented, so state, and at what depth
 If more than two strings of casing are left in hole give reasons for leaving additional strings

- Write S. L. after each measurement made with a steel line.
- If open flow tested with water write "W" before the figures if mercury write Hg.
- Steel line measurements should be made of Top and Bottom of Pittsburgh Coal and all the principal sands.
- Under Remarks note if any of principal sands are not found and if any peculiarities in sands, as looser or harder than ordinary, etc.
- If any coal other than native or Pittsburgh be found, give steel line measurements of Top and Bottom and nature of coal.
- Note if water found is fresh or salt.

Approved by

Foreman

017-1994