

LATITUDE 39° 12' 30"



LONGITUDE 80° 32' 30"

7.5 OGIS topo location

7.5' loc 0.44 S
1.05 W

15' loc 3,325
(calc.) 3,28 W

Company _____

Farm _____

Elev. 1280' - 7.5 topo loc 315193
Vadiv. NE

Quad BIG ISAAC 7 1/2

County POODRIDGE

District GREENBRIER

WELL LOCATION MAP

File No. 017-1992

HOPE NATURAL GAS COMPANY

LOCATION FOR WELL No. 7389

c7
Instructions C

Salem DISTRICT

Farm, on waters of

County, West Virginia

Greenbrier District

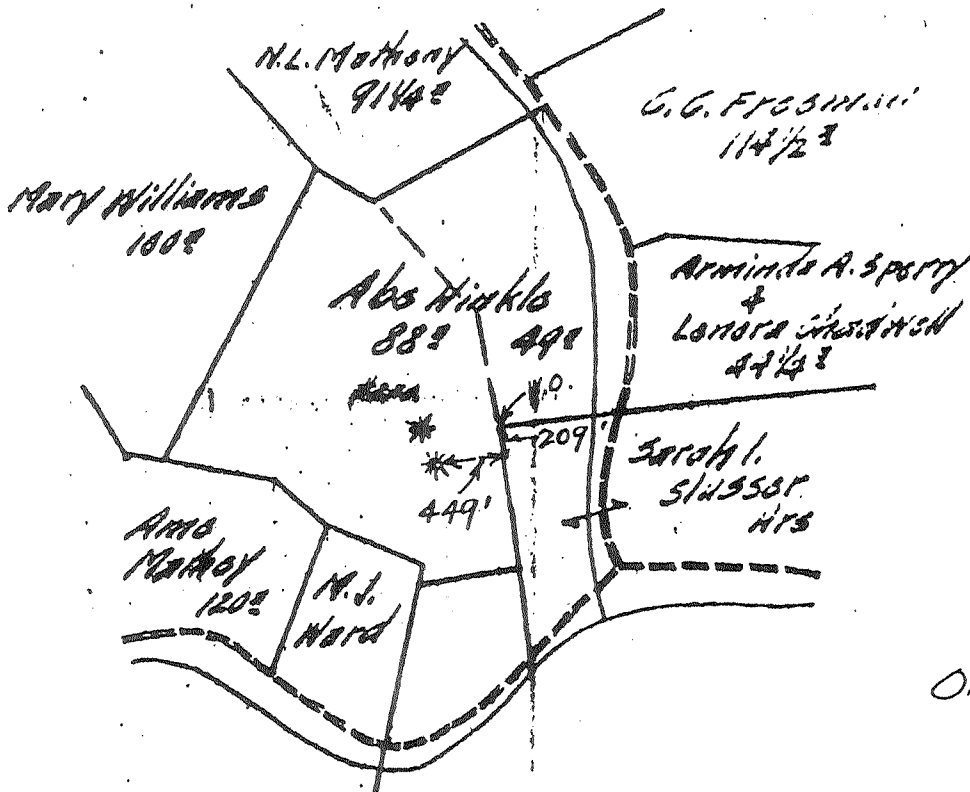
Duckridge

Lease No. 44519 Acres 138 N. S. 17 E. 3 W.

Scale one inch equals 80 p Location made in Pittsburgh Sent to Clarksburg

Location to be

58



API#
017-1992

Field Book 472 Page 15

| | |
|------------|-------------------|
| Well Book | |
| Lease Book | |
| Well Map | AUG 2 29 J.C.L. |
| Lease Map | AUG 21 A.J.B. |
| Notes | AUG 5 1929 H.H.B. |

TITLE RESERVE

SPECIAL INSTRUCTIONS: COMPLETE WELL ON OR BEFORE

Save Lease on which well Located Well No. 7168-7369

Purchased from CLY Co 6-1-29, then #250

Location Made Mess. July 22, 1929 by G. H. Cunningham As per plat, except as noted. On field map

July 24, 1929 Returned to Pittsburgh July 24, 1929

Location changed on account of

Authorized by _____ Date _____ Signed S. H. Bradley By Talley

Well No. 7535

REPAIR RECORD

Salem Dist.

Farm Name A. Hinkle

N. S. 17 E. 3 W.

Date First Work Done 3-1-43

Nature of Work Moving in S. J. Machine

Commenced:

Completed:

Cleaning Out 3-4-48

Cleaning Out 4-13-48

Drilling Deeper

Drilling Deeper

Abandoning

Abandoning

CASING AND TUBING RECORD

| Size | Before Repairs | | Pulled | | Put in Well | | After Repairs | | Size |
|--------|----------------|------------|--------|------------|-------------|------------|---------------|------------|--------|
| | Tally | Steel Line | Tally | Steel Line | Tally | Steel Line | Tally | Steel Line | |
| 10" | 246' | | | | NONE | | 246' | | 10" |
| 8-5/8" | 938' | | | | " | | 933' | | 8-5/8" |
| 6-5/8" | 1900' | | | | " | | 1900' | | 7" |

SHOOTING RECORD (Show if Open Shot or Tamped Shot)

| Date | Quarts | Top of Shell | Bottom of Shell | Diameter | Sand | TEST BEFORE SHOT | | | TEST AFTER SHOT | | | Test Taken After Shot No. Hours | By Whom Shot | |
|--------------------------------|--------|--------------|-----------------|----------|------|------------------|--------|---------|-----------------|--------|---------|---------------------------------|--------------|--|
| | | | | | | Reading | Liquid | Opening | Reading | Liquid | Opening | | | |
| | | | | | | | | | | | | | | |
| Not shot during these repairs. | | | | | | | | | | | | | | |

RECORD OF ANY DEEPER DRILLING

| Formation | Top | Bottom | Oil at | Gas at | Size | Kind | Set At (Steel Line) |
|--|-------|--------|--------|--------|-------|--------------|---------------------|
| (P.O. No. 537) Commenced drilling at depth of | 2646' | 2630' | none | NONE | 11010 | "No Oil Gas" | |
| (Cleaned out and drilled deeper for pocket) | | | | | | | |
| Total Depth | 2680' | | | | | | |

| PACKER RECORD | | |
|---------------------------|--------------|---------------------|
| Size | Kind | Set At (Steel Line) |
| 11010 | "No Oil Gas" | |
| PACKER PULLED | | |
| Size | Kind | Set At (Steel Line) |
| 11010 | "No Oil Gas" | |
| OIL PRODUCTION | | |
| Estimated | bbl. per day | Set At (Steel Line) |
| | | |
| CLARKSBURG OFFICE ENTRIES | | |
| Repair Card | | 4/30/48 |
| Well Card | " | " |
| Memo Book | | |
| Well Map | | |
| Map Sheets | | |

VOLUME AND PRESSURE REPORT

BEFORE CLEANING OUT (Take Test When Ready to Clean Out)

VOLUME TEST

| Date of Test | Flow Meter or Open Flow | PITOT TUBE | | | CUBIC FEET | Sands Gas From | Time Blown |
|--------------|-------------------------|------------|-------------|---------|------------|----------------------|------------|
| | | Reading | Liquid Used | Opening | | | |
| 3-4-48 | Fbl. | 14/10 | Water | 3/4" | 15 849 | 30 ft - Stray-Gordon | 8 hr |

AFTER CLEANING OUT

VOLUME TEST

| Date of Test | Flow Meter or Open Flow | PITOT TUBE | | | CUBIC FEET | Sands Gas From | Time Blown |
|--------------|-------------------------|------------|-------------|---------|------------|----------------------|------------|
| | | Reading | Liquid Used | Opening | | | |
| 4-12-48 | Fbl. | 100/10 | Water | 3/4" | 42 361 | 30 ft - Stray-Gordon | 6 hr |

AFTER DRILLING DEEPER

VOLUME TEST

| Date of Test | Flow Meter or Open Flow | PITOT TUBE | | | CUBIC FEET | Sands Gas From | Time Blown |
|--------------|-------------------------|---|-------------|---------|------------|----------------|------------|
| | | Reading | Liquid Used | Opening | | | |
| | | (Same as after cleaning out - No new gas found) | | | | | |

PRESSURE TEST

| Date of Test | Opening | 1 Min. | 2 Min. | 3 Min. | 4 Min. | 5 Min. | 6 Min. | 7 Min. | 8 Min. | 9 Min. | 10 Min. | 30 Min. | 60 Min. | 1 Hr. |
|--------------|-----------|--------|--------|--------|--------|--------|--------|--------|--------|--------|---------|---------|---------|-------|
| 4-13-48 | 7" casing | 0 | 0 | 1 | 1 | 2 | 3 | 4 | 4 | 5 | 5 | 10 | 14 | |
| | " Tubing | | | | | | | | | | | | | |

Remarks: Takes about 3 gals water in 24 hrs. - Cleaned out and drilled pocket only during these repairs.

ORIGINAL - For Land Dept. Only

017-1992

District Superintendent

