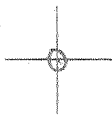


LATITUDE 39° 20' 00"

90° 35' 00"

LONGITUDE



7'5 OGIS topo location

7.5' loc 2735
1.94 W

15' loc 2735
(calc.) 1.94W

Company _____

Farm _____

Elev. 1140' 7.5' top - bla 315/93
Centerpoint SC

Quad SALEM 7 1/2

County DOODRIDGE

District GRANT

WELL LOCATION MAP

File No. 017-1949

HOPE NATURAL GAS CO.

LOCATION FOR WELL No. 3747

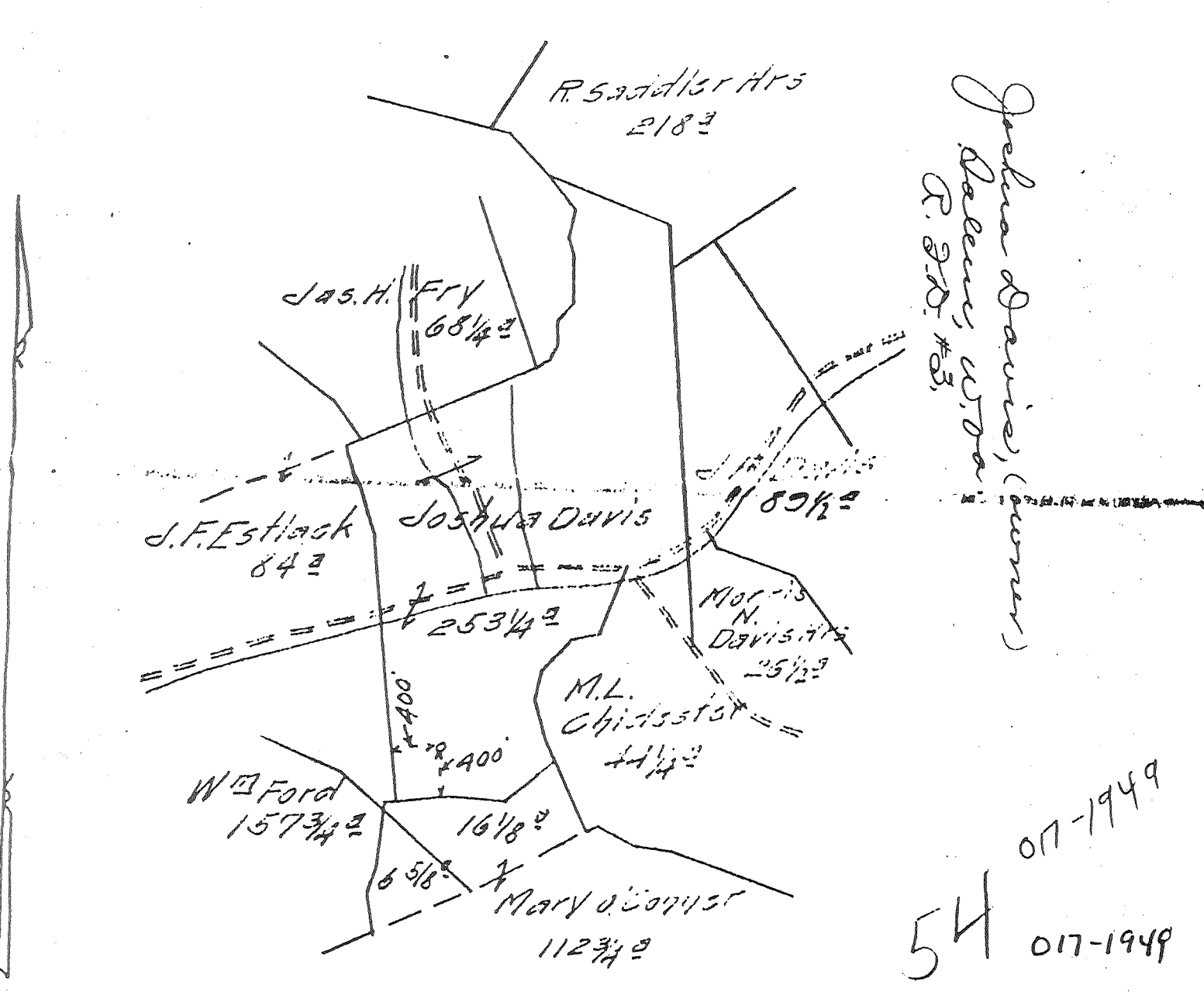
DISTRICT

Calvin Farm, on waters of *Calvin* District, *Calvin* County, West Virginia.

Case No. *2938* Acres *263* N. *11* E. *1* W.

Scale, one inch equals *80 Paces* Sent to Clarksburg Office *Feb 2 1915*

Location to be *400 feet from J. F. Estlack farm and 400 feet from J. F. Estlack corner farm.*



54 07-1949
017-1949

TITLE *Fire Insurance*

SPECIAL INSTRUCTIONS: COMPLETE WELL ON OR BEFORE *Jan 1 1915*

Location made *2-5-15* by *P. P. Shurkey* As per plat, except as noted. On field map. *2-6-15* Returned to Pittsburgh *2-6-15*

Location changed on account of _____
Authorized by _____ Date _____ Signed _____

