

LATITUDE 39°22'30"

80°39'30"

LONGITUDE



7.5 OGIS topo location

7.5' loc 2.00 S  
2.20 W

15' loc 4.88 S  
(calc.) 4.23 W

Company \_\_\_\_\_

Farm \_\_\_\_\_

Elev. 1020' - 7.5' topo K6-315/83  
Centerpoint C

Quad SMITHBURG 7 1/2'

County DODDRIDGE

District GRANT

WELL LOCATION MAP

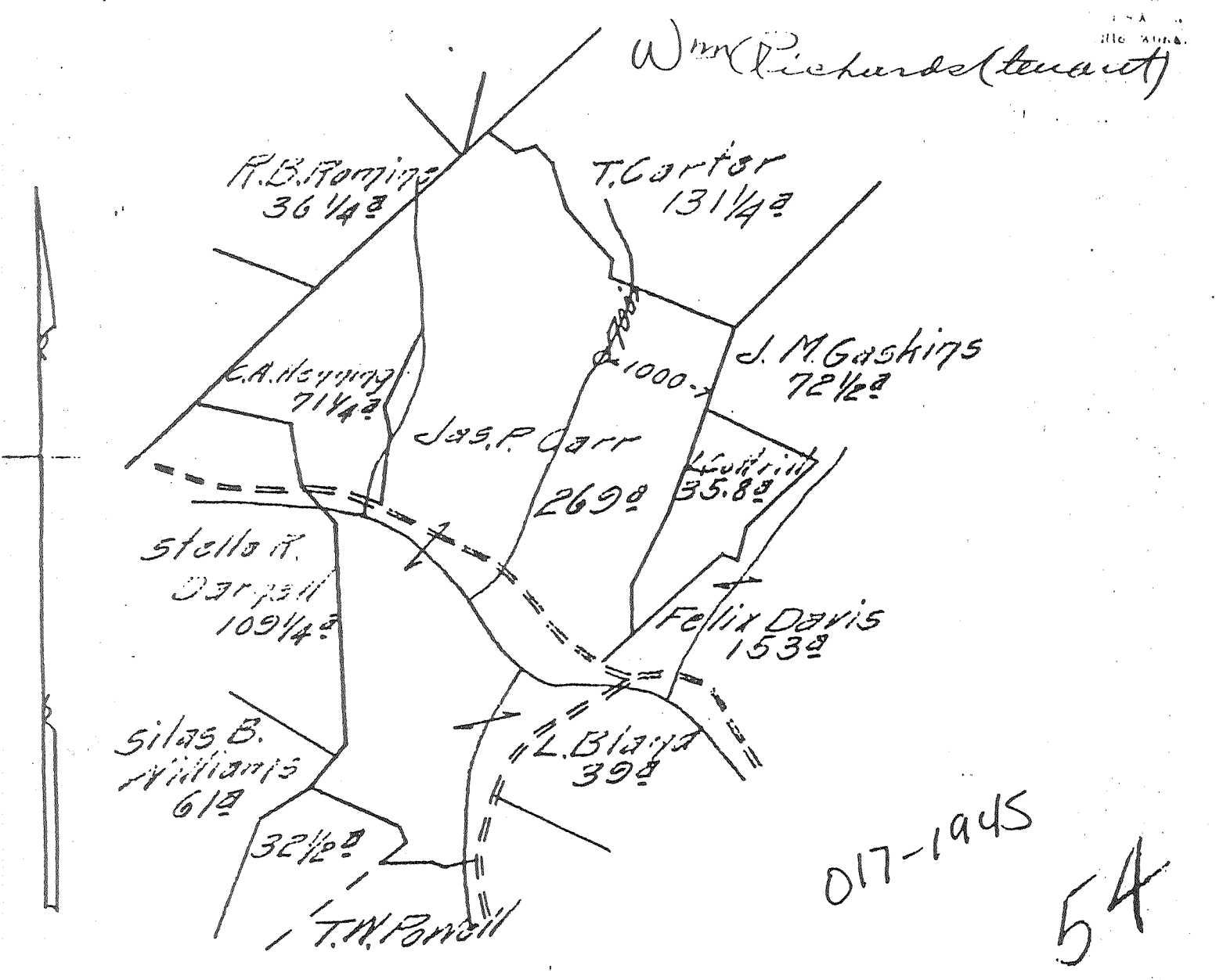
File No. 017-1945

72820 on CNG maps

HOPE NATURAL GAS CO.

LOCATION FOR WELL No. 3636

On *J.P. Carr* Farm, on waters of *Big Flint*  
*Grant* District, *Doddridge* County, West Virginia.  
 Lease No. *17780* Acres *273* N. *7* S. *7* E. W. *4*  
 Scale, one inch equals *800* feet Sent to Clarksburg Office *August 7* 1914  
 Location *1000 feet from J.M. Gaskins farm and 700 feet from J. Carter farms.*  
*8-7-14*



TITLE  
 RESERVE *Three hundred feet around the drilling tower*  
 SPECIAL INSTRUCTIONS: COMPLETE WELL ON OR BEFORE *Jan 22 1915*  
 Location made *8-11-14* by *D.W. Shubert* As per plat, except as noted. On field map.  
*8-12-14* Returned to Pittsburgh. *8-12-14*  
 Location changed on account of \_\_\_\_\_  
 Authorized by \_\_\_\_\_ Date \_\_\_\_\_ Signed \_\_\_\_\_

Well No. 36364  
 Located on J. H. Carr

District 104  
 Farm 104

District \_\_\_\_\_ County \_\_\_\_\_ State KY

Location Made \_\_\_\_\_ First Work Done 8-11-1914  
 Rig Commenced \_\_\_\_\_ Rig Completed 9-15-1914  
 Drilling Commenced 9-26-14 Drilling Completed 12-8-1914  
 Rig Contractor H. N. G. Co. Drilling Contractor \_\_\_\_\_  
 Drillers \_\_\_\_\_ H. N. G. Co. Tools. String No. \_\_\_\_\_  
 Tool Dressers \_\_\_\_\_

75  
 4  
 5

FORMATION	TOP	BOTTOM	Steel Line Measurements	Water Found Depth	Oil Found Depth	Gas Found Depth	REMARKS
Active Coal							
Pittsburg Coal							
Little Lankard							
Gas Sand	1115	1155					
First Salt	1215	1260					
Second Salt	1453	1504					
Carbon	1580	1630					
Little Lime	1710	1760					
Small Cave	1725	1775					
Big Line	1750	1800					
Big Injun	1800						
Quartz							
Granite							
Shaly Foot							
Muddy Foot							
Carbon Stray							
Carbon							
South							
Sh							
yard							
Total Depth	1828						

07-1915

1801-112 Test 40.10 water 6 5/8" open

SIZE	Charged to Well		Put in Well		Pulled Out		Left in Well		Transferred Before Completing		Left at Well Not in Use		If more than two strings of casing are left in hole, give reasons for leaving additional strings
	Feet	In.	Feet	In.	Feet	In.	Feet	In.	Feet	In.	Feet	In.	
15" Csg.	2274	11	189	10	170	4	19	6	207	10			
10" "	1775	4	49	7	270	7			175	4	2	5	Steel line 487
8 1/2" "	1650	7	1096	1			1096	1	546	6	8	7	Steel line 1074
5.5-8" "	1744	3	1744	3			1744	3			165	1	Steel line 1784
3-16" "													
Tbg.													

PACKER RECORD

SIZE	KIND	Amount Anchor	Amount Above Anchor	REMARKS
8 1/2"	151K			
1"	5 1/4"			

SHOOTING RECORD (If shot before or upon completion of well)

DATE	Quartz	Top of Shell	Bottom of Shell	Diameter	Sand	Test Before Shot			Test After Shot			Test Taken After Shot No. Hours	By Whom Shot
						Reading	Liquid	Opening	Reading	Liquid	Opening		

CEMENTING RECORD

Date Cemented \_\_\_\_\_ Size Hole Cemented \_\_\_\_\_ Size Casing Cemented \_\_\_\_\_  
 Top Pittsburg Coal \_\_\_\_\_ Top Cementing \_\_\_\_\_ Amount Cement Used \_\_\_\_\_  
 Bottom Pittsburg Coal \_\_\_\_\_ Bottom Cementing \_\_\_\_\_ Amount Sand Used \_\_\_\_\_  
 Mr. \_\_\_\_\_ of \_\_\_\_\_ Coal Company on ground when coal was cemented  
 Remarks: \_\_\_\_\_  
 Signature of persons who cemented well \_\_\_\_\_

DEC 31 1914 H.U.S.

Approved by \_\_\_\_\_ Foreman