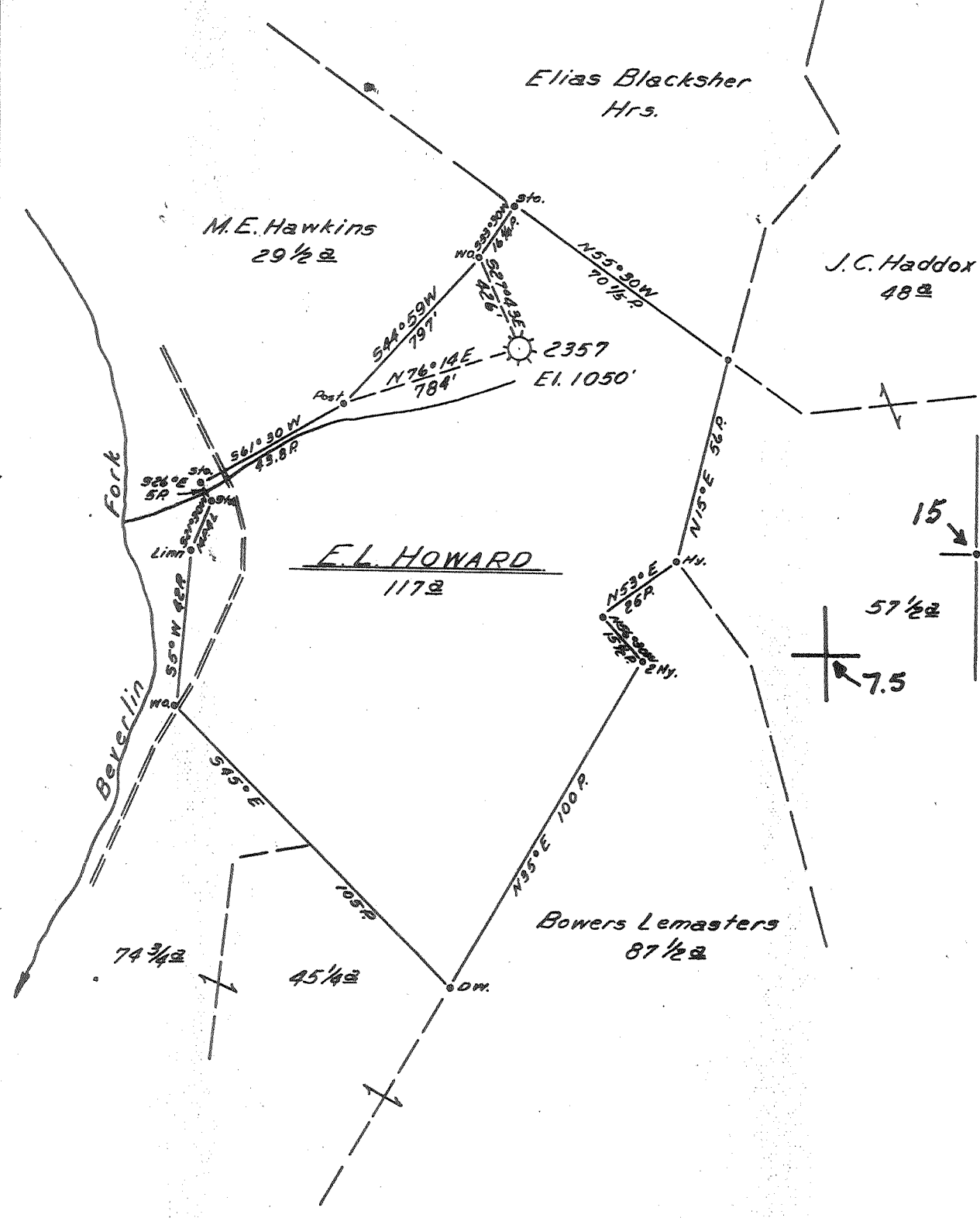


June 2/9/90

Latitude 39° 30' 39° 27' 30"

2780'

Longitude 80° 35' 11210'



- New Location ...
- Drill Deeper
- Abandonment

Map Sheet 45, S-2 E-2; F.B. 1196, P. 30

Company CNG Transmission
 Address PO Box 2450, Clarkburg, W. Va. 26301
 Farm E.L. HOWARD
 Tract _____ Acres 117 Lease No. 20096
 Well (Farm) No. _____ Serial No. 2357
 Elevation (Spirit Level) 1050'
 Quadrangle CENTERPOINT 15 / FOLSOM 7.5
 County DODDRIDGE District MCCLELLAN
 Engineer Guy H. Bradley
 Engineer's Registration No. 2425
 File No. _____ Drawing No. _____
 Date _____ Scale 1" = 40 Poles

STATE OF WEST VIRGINIA *Plugging*
 DEPARTMENT OF MINES
 OIL AND GAS DIVISION
 CHARLESTON

WELL LOCATION MAP
 FILE NO. 47-017-1933P
CANCELLED

+ Denotes location of well on United States Topographic Maps, scale 1 to 62,500, latitude and longitude lines being represented by border lines as shown.

- Denotes one inch spaces on border line of original tracing.

Dodd 1933 P

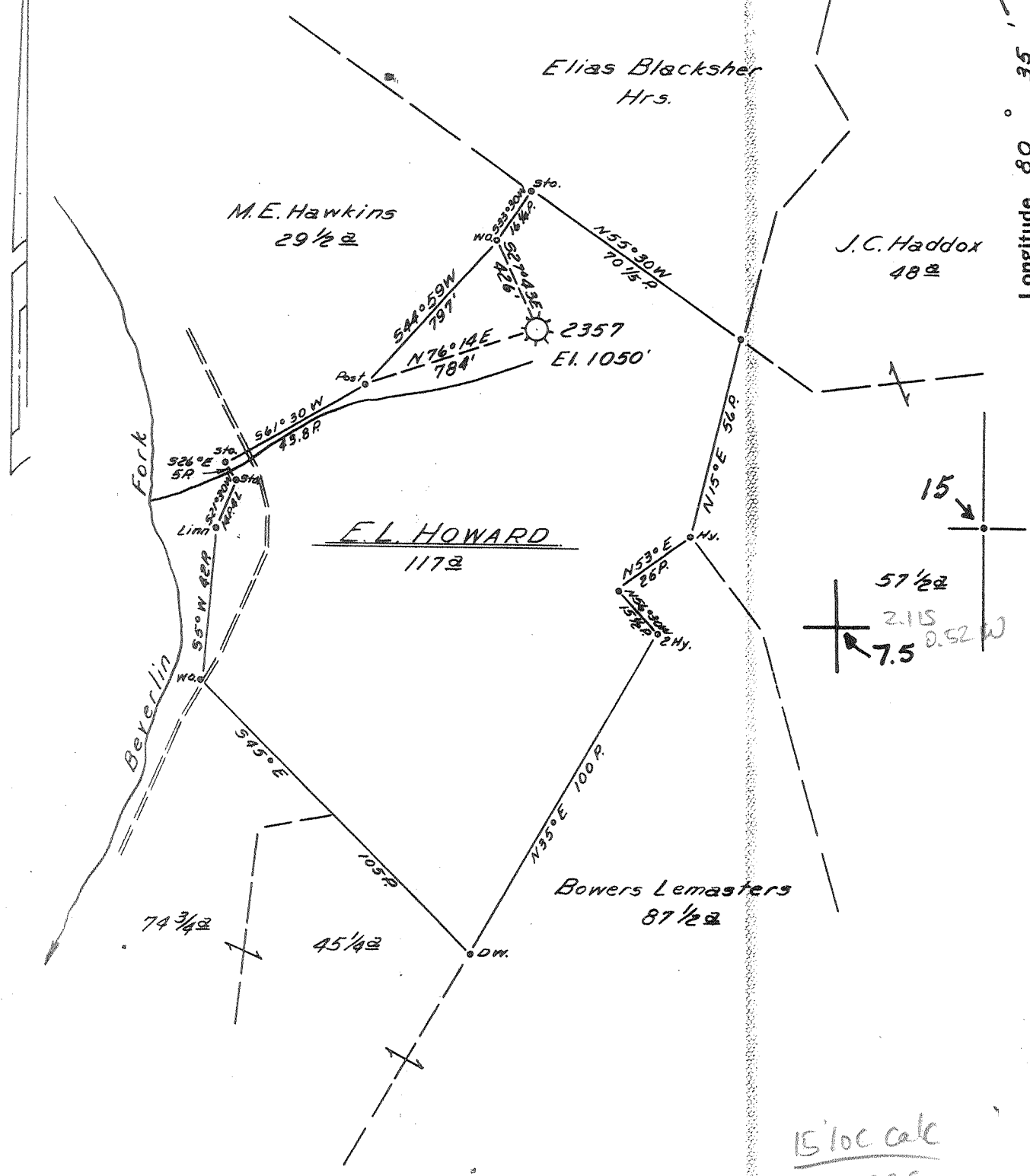
Janie 2/9/90

Latitude $39^{\circ} 30'$
 $39^{\circ} 27' 30''$

2780'

Longitude $80^{\circ} 35'$

11210'



- New Location
- Drill Deeper
- Abandonment

MAP Sheet 45, S-2 E-2, F.B. 1196, P. 30

Company	<i>CNG Transmission</i>
Address	<i>PO BOX 2450, Clarksburg, W. Va. 26301</i>
Farm	<i>E.L. HOWARD</i>
Tract	Acres <i>117</i> Lease No. <i>20096</i>
Well (Farm) No.	Serial No. <i>2357</i>
Elevation (Spirit Level)	<i>1050' DC</i>
Quadrangle	<i>CENTERPOINT 15 / FOLSOM 7.5</i>
County	<i>DODDRIDGE</i> District <i>MCCLELLAN</i>
Engineer	<i>Guy H Bradley</i>
Engineer's Registration No.	<i>2425</i>
File No.	Drawing No.
Date	Scale <i>1" = 40 Poles</i>

STATE OF WEST VIRGINIA *Plugging*
 DEPARTMENT OF MINES
 OIL AND GAS DIVISION
 CHARLESTON

WELL LOCATION MAP
 FILE NO. *47-017-1933P*

+ Denotes location of well on United States Topographic Maps, scale 1 to 62,500, latitude and longitude lines being represented by border lines as shown.

- Denotes one inch spaces on border line of original tracing.

FEB 16 1990